

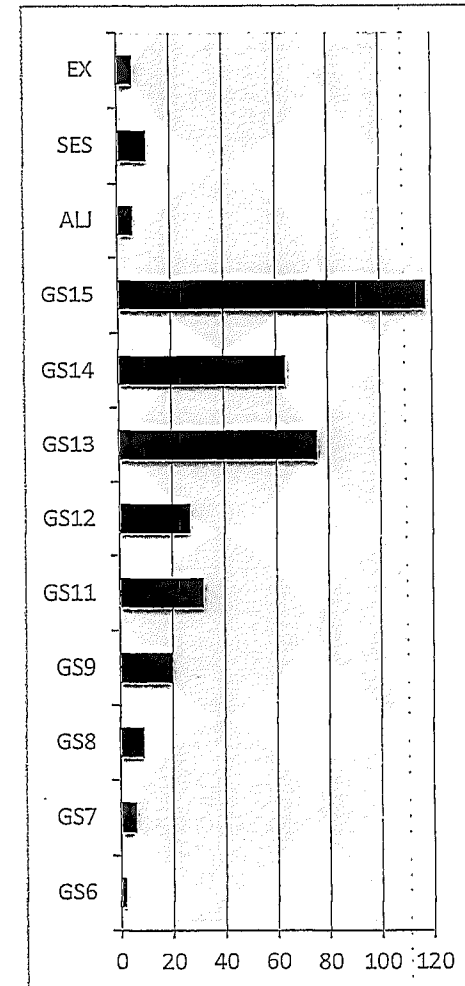
Analysis of Change by Object Classification, Fiscal Years 2015-2017

(Dollar Amounts in Thousands)

	FY 2015 Actual	FY 2016 Estimate	FY 2017 Request	FY 2016-2017 Change	Percentage Change
Personnel Compensation	\$59,405	\$62,266	\$63,995	\$1,729	2.8%
Non-personnel Obligations					
Rent	\$10,470	\$10,591	\$11,045	\$454	4.3%
Services	9,582	8,693	11,392	2,698	31.0%
Supplies	1,775	1,787	1,894	107	6.0%
Equipment	1,710	1,297	2,334	1,037	79.9%
Travel	423	579	525	-54	-9.3%
Training	659	540	520	-20	-3.8%
Communications and Equipment Rental	1,007	2,682	822	-1,860	-69.4%
Transportation	10	15	15	0	0.0%
Postage	71	44	44	0	0.0%
Land and Structures	0	0	0	0	0.0%
Printing and Reproduction	269	321	251	-70	-21.7%
Official Reception and Representation	1	27	29	2	8.5%
Subtotal Non-personnel Obligations	\$25,976	\$26,576	\$28,871	\$2,295	8.6%
Total Obligations	\$85,381	\$88,842	\$92,866	\$4,024	4.5%

Current Permanent and Term Staffing Plan with Onboard and Gaps

Office	FY 2016		
	Permanent and Term Positions in Staffing Plan	Permanent and Term On Board (as of Jan. 6, 2016)	Gap
Commissioners' Offices	32	31	1
External Relations	5	3	2
Inspector General	4	3	1
General Counsel	44	42	2
Administrative Law Judges	24	23	1
Equal Employment Opportunity	2	2	0
Chief Information Officer	31	34	-3*
Subtotal Independent Offices	142	138	4
Operations	7	6	1
Analysis and Research Services	20	18	2
Import Injury Investigations	27	20	7
Unfair Import Investigations	21	20	1
Economics	42	32	10
Tariff Affairs and Trade Agreements	14	14	0
Industries	84	65	19
Subtotal Operations	215	175	40
Chief Financial Officer	4	4	0
Budget	2	2	0
Finance	9	8	1
Procurement	6	6	0
Subtotal Chief Financial Officer	21	20	1
Administrative Services	5	7	-2*
Human Resources	9	10	-1*
Security and Support Services	11	11	0
Secretary and Dockets	16	16	0
Subtotal Administrative Services	41	44	-3*
Commission Total	419	377	42



*We constantly evaluate our workload and align resources to meet emergent needs. In the short term, the Commission may approve requests for staffing that exceed office allocations to meet workload challenges. If those workload challenges persist, the Commission may make the adjustment permanent by shifting positions, subject to the total staffing constraint of 419 permanent and term positions. See linked data set.



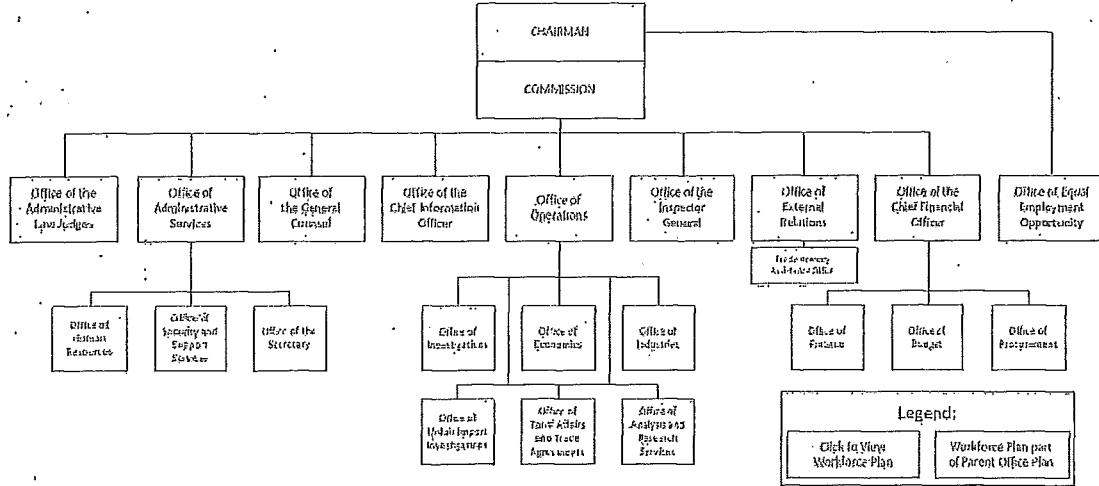
USITC web
Keeping you connected to your agency

Workforce Plan > Home

> [back to Office of Administrative Services](#)

USITC Workforce Plan

Welcome to the USITC Workforce Plan page. Simply click on the boxes in the organizational chart below to access Office-level Workforce Plans. Click [here](#) open the USITC Workforce Plan using Microsoft Visio.



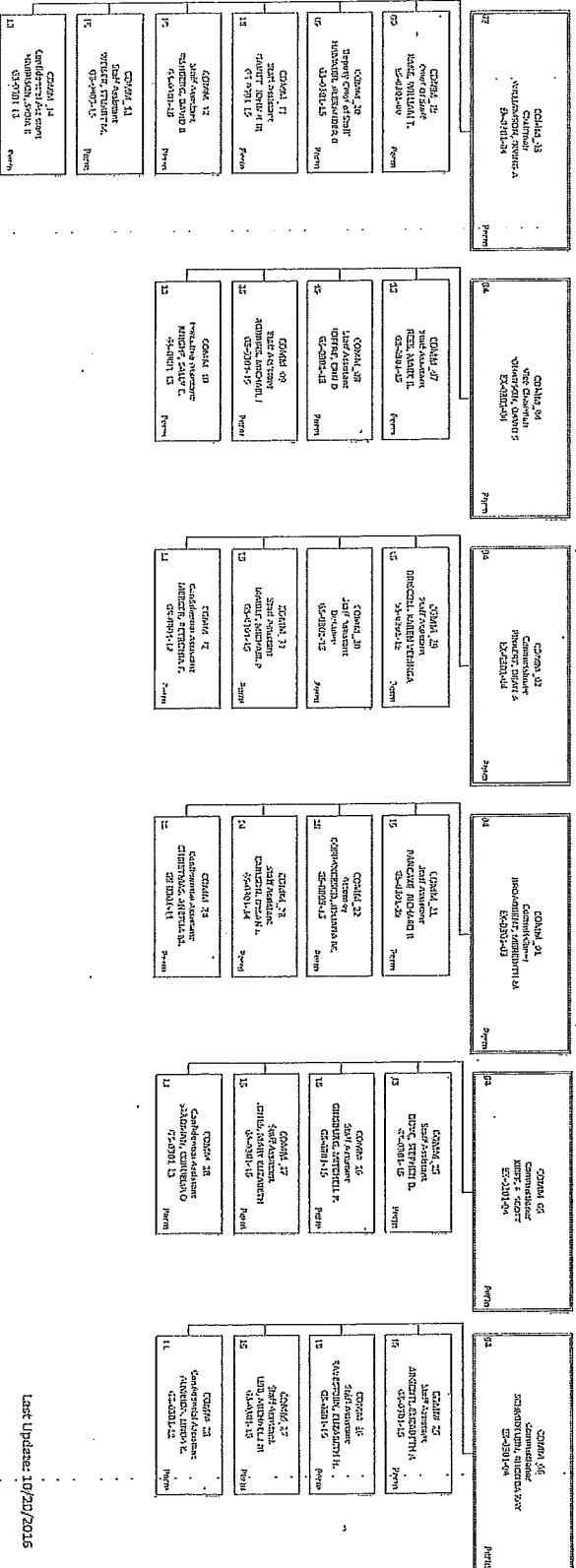


USITC 102b
Keeping you connected to your agency

Workforce Plan > Commission



Workforce Plan: The Commissioner's Offices



Last Update: 10/29/2015

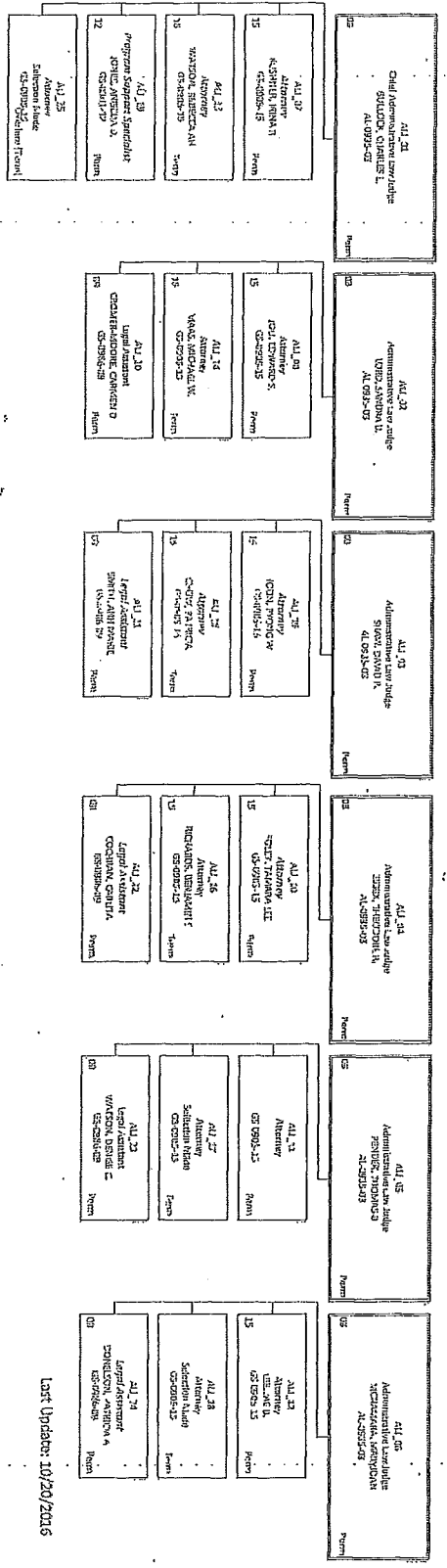


USITC *usitc*
Keeping You Connected to your agency

Workforce Plan - ALJ

Page 3
Title: None

Workforce Plan: Office of the Administrative Law Judges

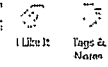


Last Update: 10/20/2016



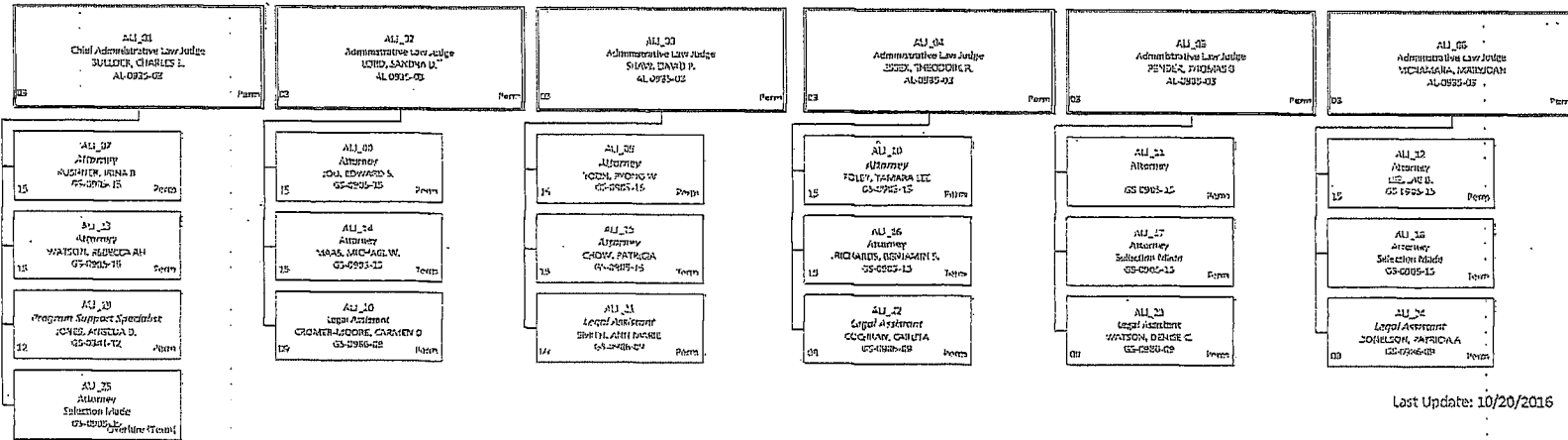
USITC web
Keeping you connected to your agency

Workforce Plan > ALJ



Tags & Notes

Workforce Plan: Office of the Administrative Law Judges

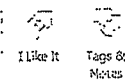


Last Update: 10/20/2016

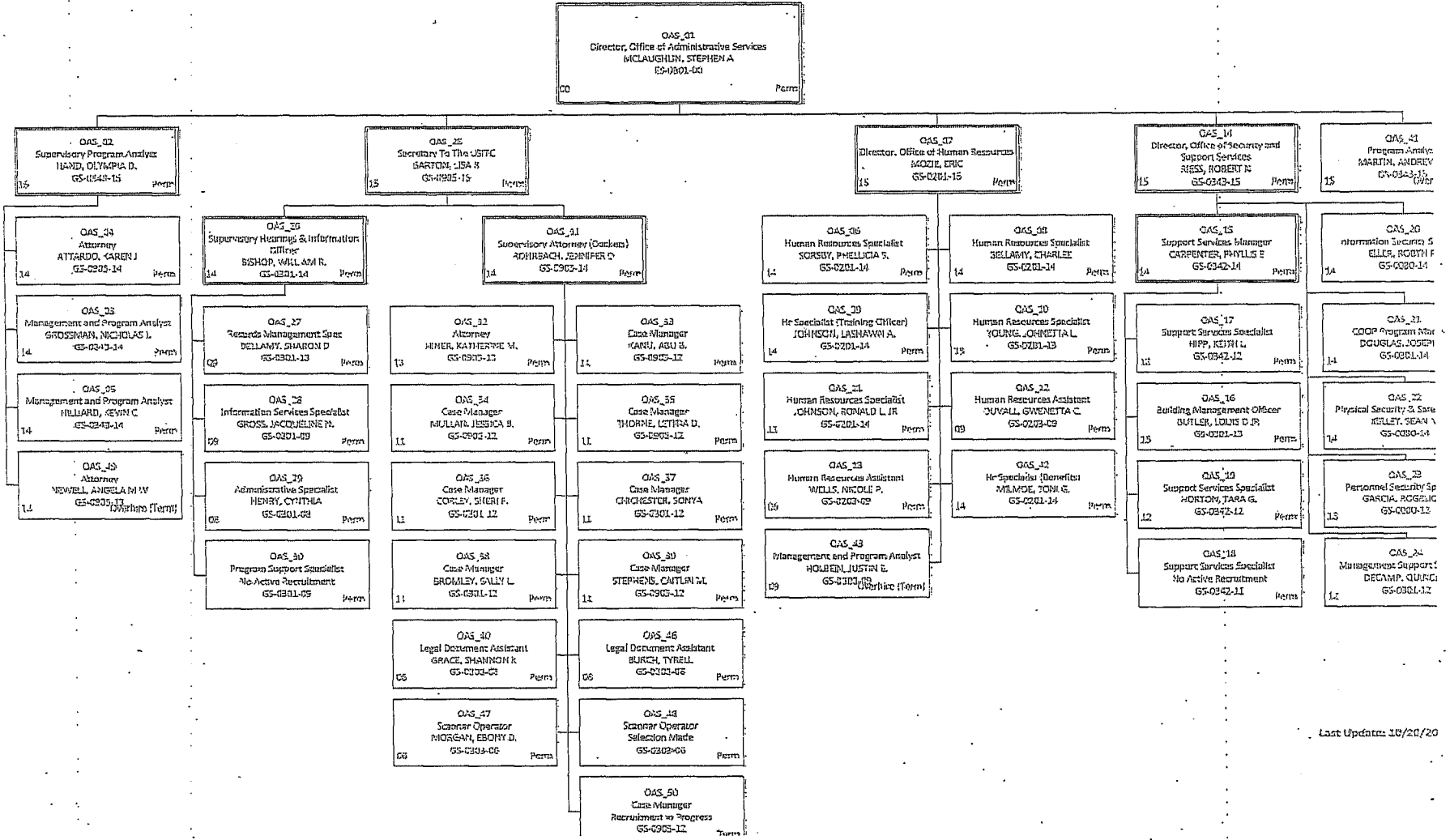


USITC web
Keeping you connected to your agency

Workforce Plan - OAS



Workforce Plan: Office of Administrative Services



Last Updated: 10/20/20

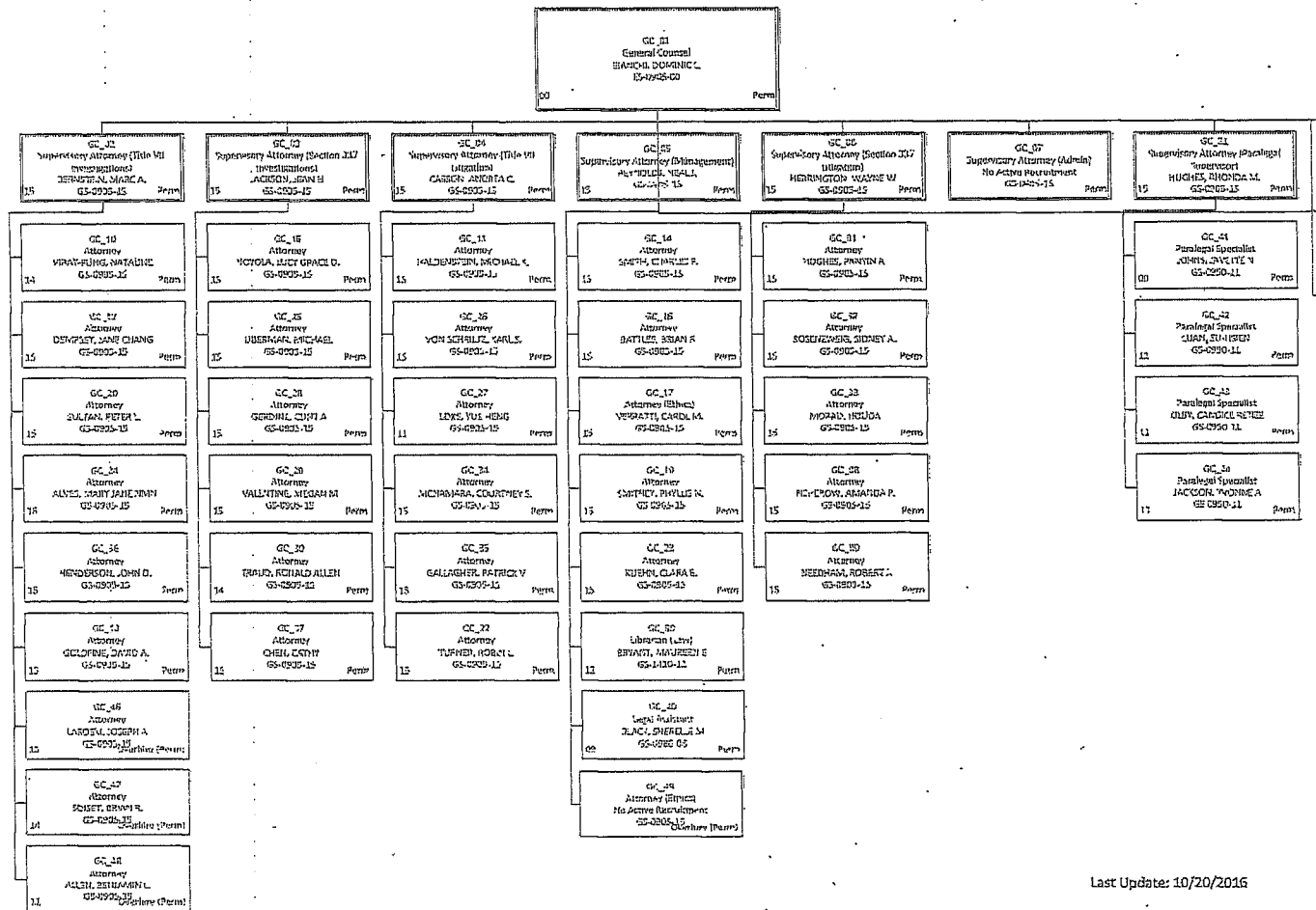


USITC web
Keeping you connected to your agency

Workforce Plan > GC



Workforce Plan: Office of the General Counsel



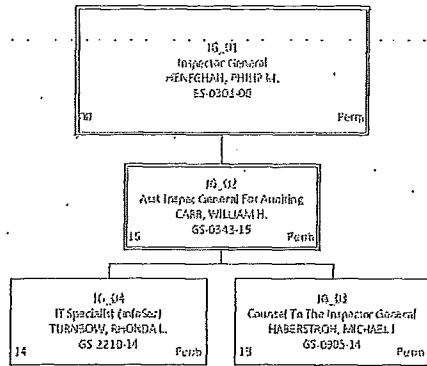
Last Update: 10/20/2016



USITC web
keeping you connected to your agency

Workforce Plan - IG

Workforce Plan: Office of the Inspector General



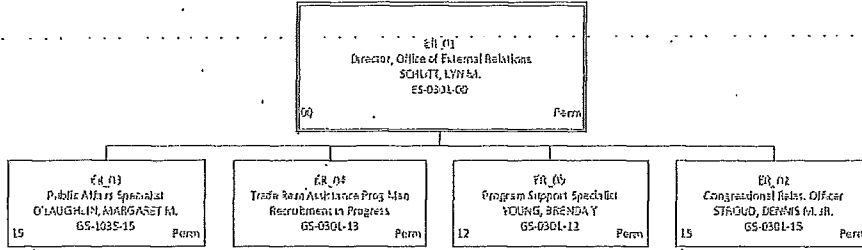
Last Update: 10/20/2016



USITC *web*
keeping you connected to your agency

Workforce Plan → ER

Workforce Plan: Office of External Relations



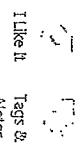
Last Update: 10/20/2016



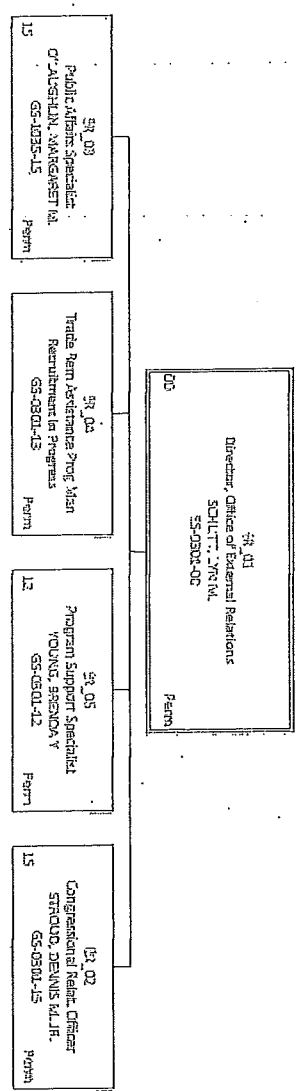
USITC *web*

keeping you connected to your agency

Workforce Plan | ER



Workforce Plan: Office of External Relations



Last Updated: 10/20/2016

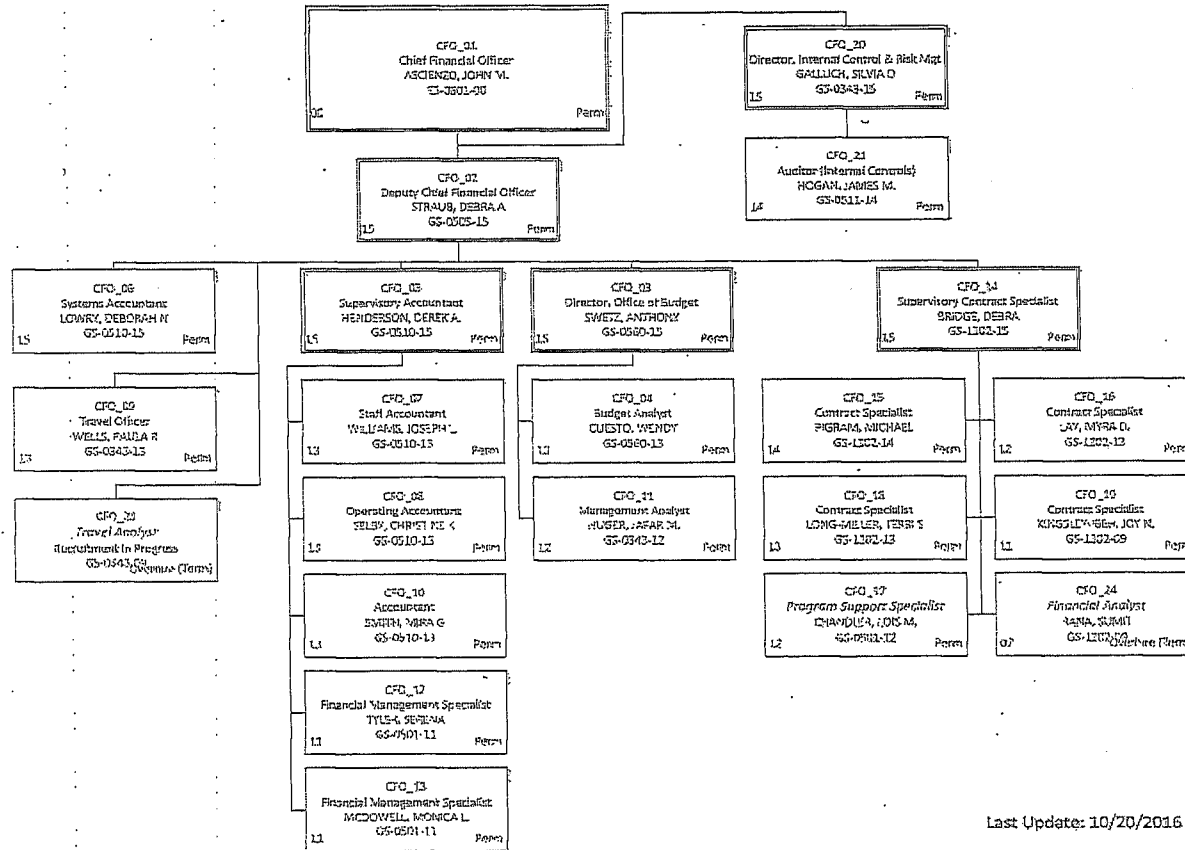


USITC web
keeping you connected to your agency

Workforce Plan > OCFO

Like It
Tags & Notes

Workforce Plan: Office of the Chief Financial Officer



Last Update: 10/20/2016



USITC web
keeping you connected to your agency

Workforce Plan → EEO



I Like It



Tags & Notes

Workforce Plan: Office of Equal Employment Opportunity

EEO_01		
Equal Employment Manager		
JACKSON, ALTVIA R		
15	GS-0280-15	Penna

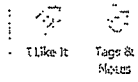
EEO_02		
Equal Employment Opportunity		
Spec		
BANKS, DENISE M.		
14	GS-0280-14	Penna

Last Update: 10/20/2016

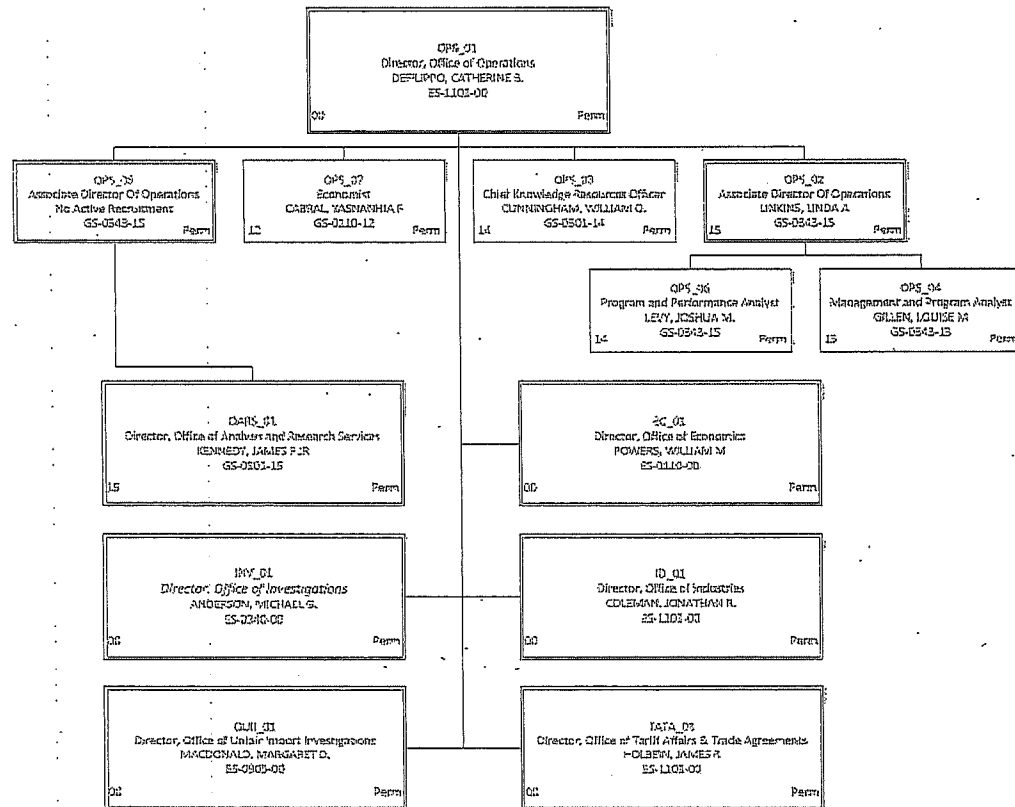


USITC web
keeping you connected to your agency

Workforce Plan > Operations



Workforce Plan: Office of Operations



Last Update: 10/20/2016



USTIC web Keeping you connected to your agency

Workforce Plan - ID

Workforce Plan: Office of Industries

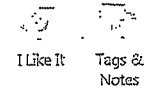
1 Like It
Top & Footer

01.01 2014-2015 2014-2015		01.02 2014-2015 2014-2015		01.03 2014-2015 2014-2015		01.04 2014-2015 2014-2015		01.05 2014-2015 2014-2015		01.06 2014-2015 2014-2015		01.07 2014-2015 2014-2015		01.08 2014-2015 2014-2015	
01.01.01	...	01.02.01	...	01.03.01	...	01.04.01	...	01.05.01	...	01.06.01	...	01.07.01	...	01.08.01	...
01.01.02	...	01.02.02	...	01.03.02	...	01.04.02	...	01.05.02	...	01.06.02	...	01.07.02	...	01.08.02	...
01.01.03	...	01.02.03	...	01.03.03	...	01.04.03	...	01.05.03	...	01.06.03	...	01.07.03	...	01.08.03	...
01.01.04	...	01.02.04	...	01.03.04	...	01.04.04	...	01.05.04	...	01.06.04	...	01.07.04	...	01.08.04	...
01.01.05	...	01.02.05	...	01.03.05	...	01.04.05	...	01.05.05	...	01.06.05	...	01.07.05	...	01.08.05	...
01.01.06	...	01.02.06	...	01.03.06	...	01.04.06	...	01.05.06	...	01.06.06	...	01.07.06	...	01.08.06	...
01.01.07	...	01.02.07	...	01.03.07	...	01.04.07	...	01.05.07	...	01.06.07	...	01.07.07	...	01.08.07	...
01.01.08	...	01.02.08	...	01.03.08	...	01.04.08	...	01.05.08	...	01.06.08	...	01.07.08	...	01.08.08	...
01.01.09	...	01.02.09	...	01.03.09	...	01.04.09	...	01.05.09	...	01.06.09	...	01.07.09	...	01.08.09	...
01.01.10	...	01.02.10	...	01.03.10	...	01.04.10	...	01.05.10	...	01.06.10	...	01.07.10	...	01.08.10	...
01.01.11	...	01.02.11	...	01.03.11	...	01.04.11	...	01.05.11	...	01.06.11	...	01.07.11	...	01.08.11	...
01.01.12	...	01.02.12	...	01.03.12	...	01.04.12	...	01.05.12	...	01.06.12	...	01.07.12	...	01.08.12	...
01.01.13	...	01.02.13	...	01.03.13	...	01.04.13	...	01.05.13	...	01.06.13	...	01.07.13	...	01.08.13	...
01.01.14	...	01.02.14	...	01.03.14	...	01.04.14	...	01.05.14	...	01.06.14	...	01.07.14	...	01.08.14	...
01.01.15	...	01.02.15	...	01.03.15	...	01.04.15	...	01.05.15	...	01.06.15	...	01.07.15	...	01.08.15	...
01.01.16	...	01.02.16	...	01.03.16	...	01.04.16	...	01.05.16	...	01.06.16	...	01.07.16	...	01.08.16	...
01.01.17	...	01.02.17	...	01.03.17	...	01.04.17	...	01.05.17	...	01.06.17	...	01.07.17	...	01.08.17	...
01.01.18	...	01.02.18	...	01.03.18	...	01.04.18	...	01.05.18	...	01.06.18	...	01.07.18	...	01.08.18	...
01.01.19	...	01.02.19	...	01.03.19	...	01.04.19	...	01.05.19	...	01.06.19	...	01.07.19	...	01.08.19	...
01.01.20	...	01.02.20	...	01.03.20	...	01.04.20	...	01.05.20	...	01.06.20	...	01.07.20	...	01.08.20	...
01.01.21	...	01.02.21	...	01.03.21	...	01.04.21	...	01.05.21	...	01.06.21	...	01.07.21	...	01.08.21	...
01.01.22	...	01.02.22	...	01.03.22	...	01.04.22	...	01.05.22	...	01.06.22	...	01.07.22	...	01.08.22	...
01.01.23	...	01.02.23	...	01.03.23	...	01.04.23	...	01.05.23	...	01.06.23	...	01.07.23	...	01.08.23	...
01.01.24	...	01.02.24	...	01.03.24	...	01.04.24	...	01.05.24	...	01.06.24	...	01.07.24	...	01.08.24	...
01.01.25	...	01.02.25	...	01.03.25	...	01.04.25	...	01.05.25	...	01.06.25	...	01.07.25	...	01.08.25	...
01.01.26	...	01.02.26	...	01.03.26	...	01.04.26	...	01.05.26	...	01.06.26	...	01.07.26	...	01.08.26	...
01.01.27	...	01.02.27	...	01.03.27	...	01.04.27	...	01.05.27	...	01.06.27	...	01.07.27	...	01.08.27	...
01.01.28	...	01.02.28	...	01.03.28	...	01.04.28	...	01.05.28	...	01.06.28	...	01.07.28	...	01.08.28	...
01.01.29	...	01.02.29	...	01.03.29	...	01.04.29	...	01.05.29	...	01.06.29	...	01.07.29	...	01.08.29	...
01.01.30	...	01.02.30	...	01.03.30	...	01.04.30	...	01.05.30	...	01.06.30	...	01.07.30	...	01.08.30	...
01.01.31	...	01.02.31	...	01.03.31	...	01.04.31	...	01.05.31	...	01.06.31	...	01.07.31	...	01.08.31	...

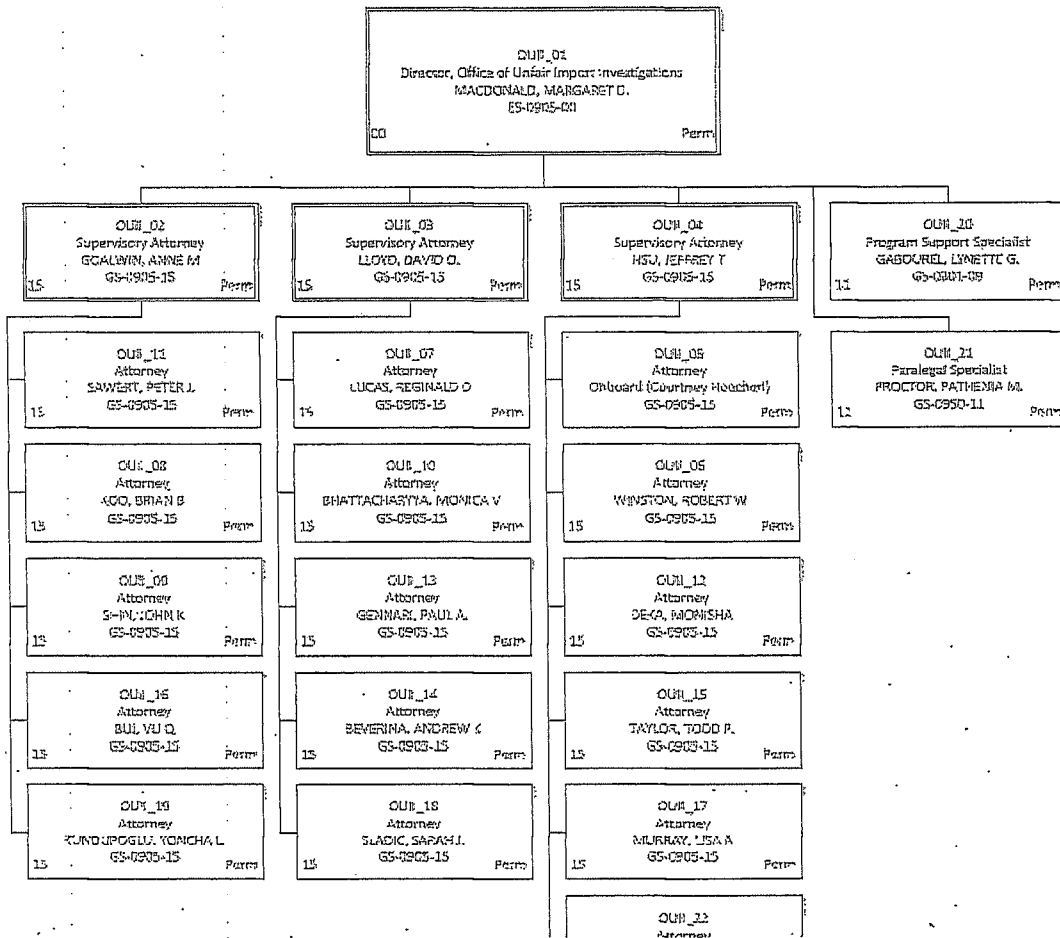


USITC web
keeping you connected to your agency

Workforce Plan > OUII



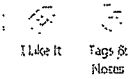
Workforce Plan: Office of Unfair Import Investigations



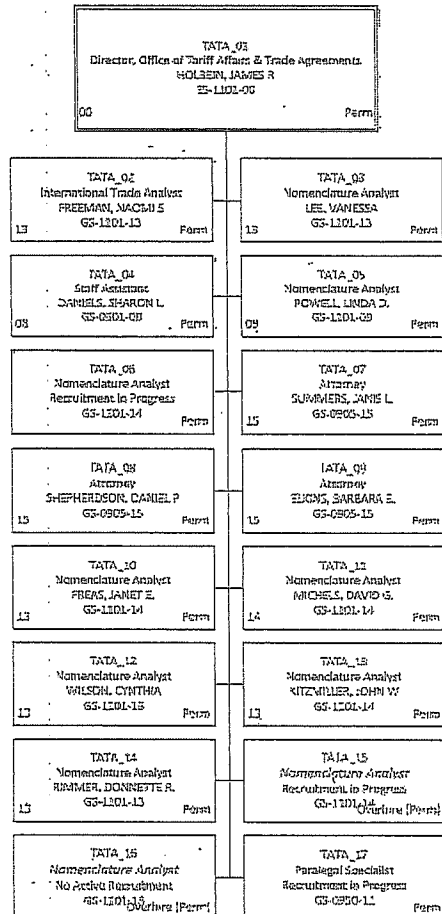


USITC web
Keeping you connected to your agency

Workforce Plan > TATA



Workforce Plan: Office of Tariff Affairs and Trade Agreements

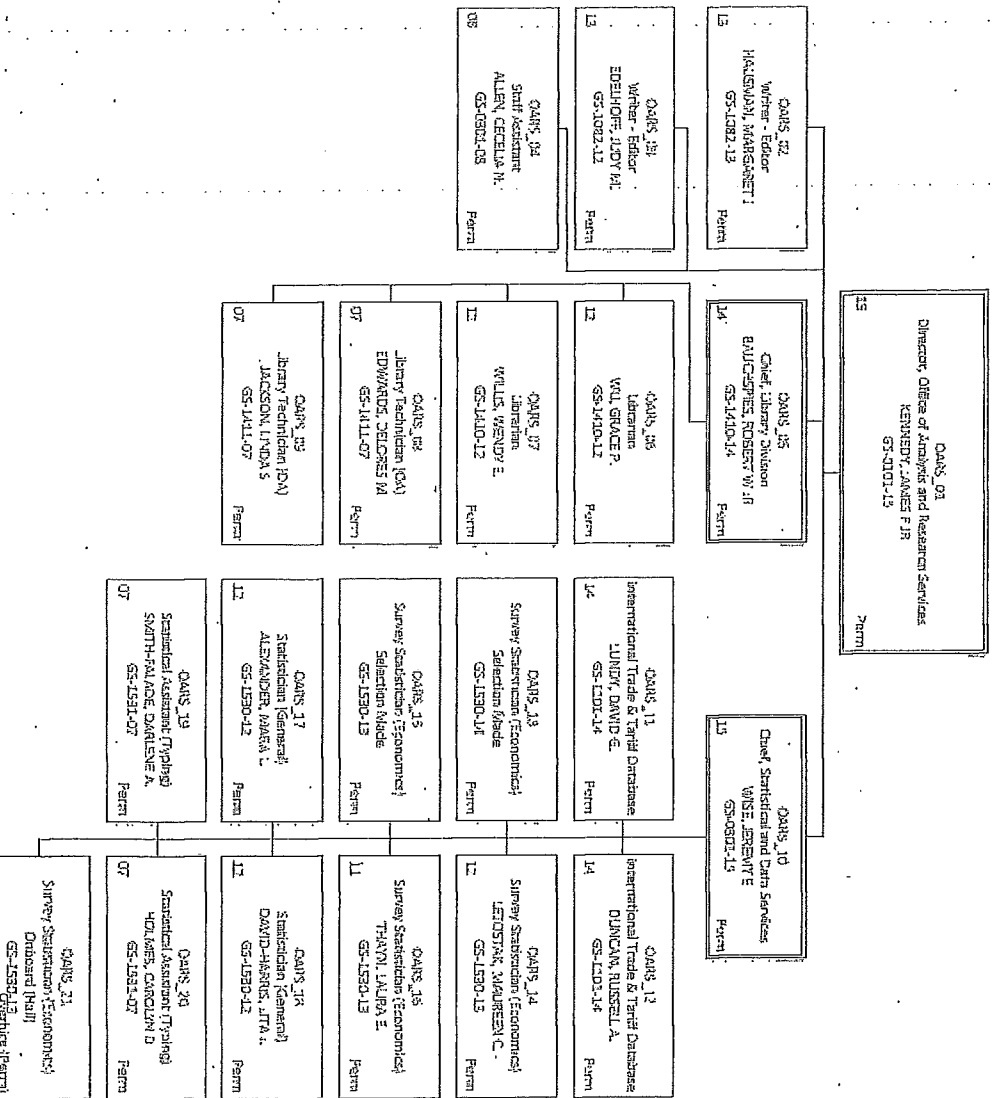




USITC *toWeb*
 Keeping you connected to your agency

Workforce Plan - OARS

Workforce Plan: Office of Analysis and Research Services



I Like It
 Tags &
 Notes