

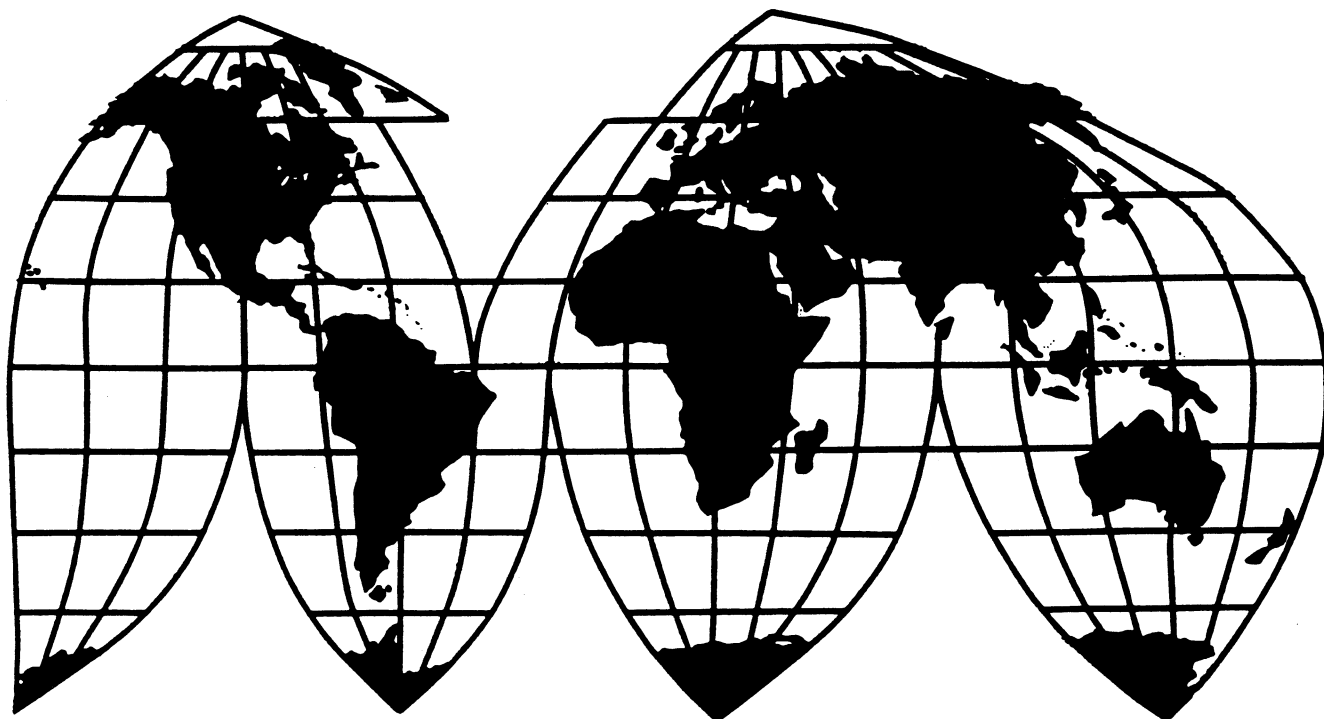
Monitoring of U.S. Imports of Peppers

Investigation No. 332-351

Publication 2913

July 1995

U.S. International Trade Commission



Washington, DC 20436

U.S. International Trade Commission

COMMISSIONERS

Peter S. Watson, Chairman

Janet A. Nuzum

David B. Rohr

Don E. Newquist

Carol T. Crawford

Lynn M. Bragg

Robert A. Rogowsky
Director of Operations

Vern Simpson
Director of Industries

This report was principally prepared by

Timothy P. McCarty and Lee Frankel
Office of Industries

With assistance from
Brenda Young, Elisa Jackson, and Janice Wayne
Office of Industries

Under the direction of
Lowell Grant, Chief
Fruit, Vegetable, and Specialty Products Branch

Cathy L. Jabara, Chief
Agriculture and Forest Products Division

**Address all communications to
Secretary to the Commission
United States International Trade Commission
Washington, DC 20436**

U.S. International Trade Commission

Washington, DC 20436

Monitoring of U.S. Imports of Peppers

Publication 2913



July 1995

PREFACE

Section 316 of the North American Free-Trade Agreement Implementation Act (NAFTA Implementation Act), Public Law 103-182, requires the U.S. International Trade Commission (Commission) to monitor U.S. imports of "fresh or chilled tomatoes" and "fresh or chilled peppers, other than chili peppers," until January 1, 2009. The purpose of this monitoring is to permit the Commission to conduct an expedited investigation and, if appropriate, recommend to the President provisional relief should a petition requesting such relief be filed under section 302 of the NAFTA Implementation Act with respect to imports from Canada and Mexico or with respect to a petition for relief from all countries be filed under section 202 of the Trade Act of 1974. Generally, such provisional relief would remain in effect pending completion of the investigation under section 302 or 202. As a result, the Commission instituted investigation No. 332-350, Monitoring of U.S. Imports of Tomatoes, and investigation No. 332-351, Monitoring of U.S. Imports of Peppers, under section 332(g) of the Tariff Act of 1930 (19 U.S.C. 1332(g)). This report on the Commission's monitoring investigation on peppers covers peppers for fresh-market use and for processing.

This report contains statistical information gathered by the Commission on the U.S. pepper industry in the course of its monitoring. This information includes (1) U.S. imports, (2) U.S. exports, and (3) industry published data (including U.S. production, planted and harvested area, U.S. weekly arrivals and shipping point quantities, average U.S. retail and shipper prices, and U.S. cost-of-production estimates). This report covers 1990-94 data and partial-year data for 1995.

The information presented in this report on the U.S. pepper industry was obtained from a number of sources, including the U.S. Department of

Agriculture, the U.S. Department of Commerce, and the University of Florida
Cooperative Extension Service.

CONTENTS

	Page
Preface	i
Highlights	1
 Figures	
1. Fresh-market peppers: Seasonal index of U.S. imports from Mexico, 1990-94	7
2. Fresh-market peppers: Weekly shipments from all sources, by weeks, Dec. 3-June 3, 1989/90 to 1994/95	22
3. Fresh-market peppers: Weekly shipments from Florida, by weeks, Dec. 3-June 3, 1989/90 to 1994/95 seasons	25
4. Fresh-market peppers: Weekly shipments from Mexico, by weeks, Dec. 3-June 3, 1989/90 to 1994/95	28
5. Fresh-market peppers: Tuesday F.O.B. shipping prices, Florida, Nov. 29-May 30, 1989/90-1993/94 5-year average and 1994/95, large green bell peppers, 1-1/9 bushel cartons	41
6. Fresh-market peppers: Tuesday F.O.B. shipping prices, Nogales, AZ, Dec. 13-Apr. 18, 1989/90-1993/94 5-year average and 1994/95, large green bell peppers, 1-1/9 bushel cartons	43
7. Fresh peppers: Seasonal index of U.S. average retail prices, 1990-1994	46
 Tables	
<i>Production and trade</i>	3
1. Fresh-market peppers: U.S. production, exports of domestic merchandise, and imports for consumption, 1990-94	4
2. Fresh-market peppers: U.S. imports for consumption, by principal sources, 1990-94	5
3. Fresh-market peppers: U.S. imports for consumption from Mexico, by major ports of entry, Jan. 1990-May 1995	6
4. Fresh-market peppers: U.S. exports of domestic merchandise, by principal markets, 1990-94	8
5. Processed peppers: U.S. production and imports for consumption, 1990-94	9
6. Processed peppers: U.S. imports for consumption, by principal sources, 1990-94	10
 <i>Production area and costs of production</i>	 11
7. Peppers: U.S. planted and harvested area, production, yield, and production value data, by selected States and total, 1990-94	12
8. Fresh-market peppers: Florida and Sinaloa harvested area, 1985/86 to 1993/94	14
9. Estimated production costs for fresh-market peppers grown in the Palm Beach County, FL, area, 1990/91 to 1993/94 seasons	15
10. Estimated production costs for fresh-market peppers grown in the Southwest Florida area, 1990/91 to 1993/94 seasons	16

CONTENTS--Continued

Page

Tables--Continued

<i>Shipments and arrivals</i>	17
11. Fresh-market peppers: Weekly quantities available at major shipping points, by sources, Jan. 1-Dec. 31, 1994	18
12. Fresh-market peppers: Weekly quantities available at major shipping points, by sources, Jan. 7-June 3, 1995	20
13. Fresh-market peppers: Weekly shipments from all sources, by weeks, Dec. 3-June 3, 1989/90 to 1994/95	21
14. Fresh-market peppers: Percent of 1989/90-1993/94 5-year average total reported U.S. weekly shipments from all sources, by weeks, Dec. 3-June 3, 1989/90 to 1994/95	23
15. Fresh-market peppers: Weekly shipments from Florida, by weeks, Dec. 3-June 3, 1989/90 to 1994/95	24
16. Fresh-market peppers: Percent of total reported U.S. weekly shipments from Florida, by weeks, Dec. 3-June 3, 1989/90 to 1994/95	26
17. Fresh-market peppers: Weekly shipments from Mexico, by weeks, Dec. 3-June 3, 1989/90 to 1994/95	27
18. Fresh-market peppers: Percent of total reported U.S. weekly shipments from Mexico, by weeks, Dec. 3-June 3, 1989/90 to 1994/95	29
19. Fresh-market peppers: Weekly arrivals at Boston and New York City wholesale terminal markets, by markets and by sources, Jan. 7-Dec. 30, 1994	30
20. Fresh-market peppers: Weekly arrivals at Boston and New York City wholesale terminal markets, by markets and by sources, Jan. 6-June 2, 1995	31
21. Fresh-market peppers: Weekly arrivals at Philadelphia and Chicago wholesale terminal markets, by markets and by sources, Jan. 7-Dec. 30, 1994	32
22. Fresh-market peppers: Weekly arrivals at Philadelphia and Chicago wholesale terminal markets, by markets and by sources, Jan. 6-June 2, 1995	33
23. Fresh-market peppers: Weekly arrivals at Dallas and Los Angeles wholesale terminal markets, by markets and by sources, Jan. 7-Dec. 30, 1994	34
24. Fresh-market peppers: Weekly arrivals at Dallas and Los Angeles wholesale terminal markets, by markets and by sources, Jan. 6-June 2, 1995	35
25. Fresh-market peppers: Monthly arrivals of peppers in 22 cities, by sources, 1990-94	36
26. Fresh-market peppers: Percentage of monthly arrivals of peppers in 22 cities, by sources, 1990-94	37
<i>Prices</i>	39
27. Fresh-market peppers: Tuesday F.O.B. shipping prices, Florida, Nov. 29-May 30, 1989/90 to 1994/95, large green bell peppers, 1-1/9 bushel cartons	40

CONTENTS--Continued

Page

Tables--Continued

28. Fresh-market peppers: Tuesday F.O.B. shipping prices, Nogales, AZ, Dec. 13-Apr. 18, 1989/90 to 1994/95, large green bell peppers, 1-1/9 bushel cartons	42
29. Fresh-market peppers: Tuesday F.O.B. shipping prices, Nogales, AZ, Dec. 13-Apr. 18, 1989/90 to 1994/95, medium green bell peppers, 1-1/9 bushel cartons	44
30. Fresh-market peppers: Average retail prices, by overall U.S. average and 3 regions' averages, Jan. 1990-Mar. 1995 . . .	45

HIGHLIGHTS

The following are highlights of the statistical data collected on all peppers, as well as on peppers for fresh-market use and processing.

Fresh-market peppers

- U.S. production of fresh-market peppers rose by 51 percent, by volume, from an estimated 406,068 metric tons in 1990 to 612,425 metric tons in 1994. In 1994, Florida and California accounted for 39.9 and 36.0 percent, respectively, of total U.S. production of peppers.
- U.S. imports of fresh-market peppers increased by 18.8 percent, by volume, from 99,791 metric tons in 1990 to 118,598 metric tons in 1994, and increased by 15.3 percent, by value, from \$126.7 million in 1990 to \$146.0 million in 1994. Mexico accounted for 82 percent by volume of total imports of fresh-market peppers in 1994. Other important foreign suppliers included the Netherlands and Canada.
- During 1990-94, approximately four-fifths of U.S. imports of fresh-market peppers from Mexico entered through the Nogales, AZ, customs district. Most of the remaining U.S. imports of fresh-market peppers entered through the San Diego, CA, customs district. Most of the imports entered during November through the following May.
- The average unit value for total U.S. imports of fresh-market peppers rose steadily from \$1.01 per kilogram in 1991 to \$1.23 per kilogram in 1994. Throughout the 1990-94 period, unit values for fresh-market peppers from Mexico followed the same trend, albeit at a significantly lower value.
- U.S. exports of fresh-market peppers rose steadily from 68,599 metric tons in 1990 to 85,926 metric tons in 1992, before falling to 53,375 metric tons in 1994. The value of U.S. exports amounted to \$46.8 million in 1994. Canada was the leading foreign market for U.S. fresh-market peppers, accounting for 95 percent of exports by volume in 1994.
- Retail prices for fresh-market peppers vary throughout the year, with the highest prices occurring in the first two quarters of the year. Since 1990, the average U.S. retail prices for fresh-market peppers in December have risen by 77 percent, from \$.858 in 1990 to \$1.521 in 1994.

Processed peppers

- U.S. production of processed peppers rose by 58 percent, by quantity, from 16,630 metric tons in 1990 to 26,334 metric tons in 1992, before falling to 19,449 metric tons in 1994.
- U.S. imports of processed peppers declined by 28 percent from 8,356 metric tons in 1990 to 6,023 metric tons in 1994, with the value of total imports falling by 36 percent from \$12.2 million in 1990 to \$7.8 million in 1994. Spain was the leading source of processed peppers in 1994, accounting for 88 percent of imports by volume in that year.

PRODUCTION AND TRADE

Table 1

Fresh-market peppers: U.S. production, exports of domestic merchandise, and imports for consumption, 1990-94

Year	Production ¹	Exports ²	Imports ³
	<u>Quantity (1,000 kilograms)</u>		
1990	406,068	68,599	99,791
1991	477,545	76,037	98,301
1992	557,445	85,926	88,585
1993	560,150	55,591	121,948
1994	612,425	53,375	118,598
	<u>Value (1,000 dollars)</u>		
1990	174,722	37,611	126,691
1991	272,314	44,224	99,516
1992	328,230	47,726	96,591
1993	371,858	48,639	133,924
1994	397,530	46,777	146,020
	<u>Unit value (dollars per kilogram)</u>		
1990	0.43	0.55	1.27
199157	.58	1.01
199259	.56	1.09
199366	.87	1.10
199465	.88	1.23

¹ Estimated by the Commission staff based on raw product intended for fresh-market use and raw product intended for processing. Data are not reported separately for each end use.

² Includes fresh or chilled peppers (*Schedule B* No. 0709.60.0000) on a fresh-weight basis.

³ Includes fresh or chilled peppers, other than chili peppers (*Harmonized Tariff Schedule* statistical reporting number 0709.60.0040) on a fresh-weight basis.

Source: Production data compiled from official statistics of the U.S. Department of Agriculture; exports and imports compiled from official statistics of the U.S. Department of Commerce.

Table 2

Fresh-market peppers: U.S. imports for consumption,¹ by principal sources, 1990-94

Source	1990	1991	1992	1993	1994
<u>Quantity (1,000 kilograms)</u>					
Mexico	91,022	87,334	76,277	101,234	96,713
Netherlands	6,808	8,143	9,836	16,191	16,906
Canada	1,397	2,345	1,841	3,511	3,839
Belgium	150	220	233	496	462
Israel	0	9	0	12	143
Dominican Republic	236	170	184	384	428
Jamaica	28	33	60	49	36
Pakistan	0	0	0	0	20
All other	150	47	154	72	51
Total	<u>99,791</u>	<u>98,301</u>	<u>88,585</u>	<u>121,948</u>	<u>118,598</u>
<u>Value (1,000 dollars)</u>					
Mexico	104,652	71,995	64,055	89,869	97,097
Netherlands	18,267	21,806	26,782	35,794	40,225
Canada	2,826	4,723	4,429	6,560	6,859
Belgium	427	701	809	1,278	1,315
Israel	0	13	0	29	151
Dominican Republic	133	108	80	159	123
Jamaica	56	85	155	105	89
Pakistan	0	0	0	0	19
All other	331	86	281	131	141
Total	<u>126,691</u>	<u>99,516</u>	<u>96,591</u>	<u>133,924</u>	<u>146,020</u>
<u>Unit value (dollars per kilogram)</u>					
Mexico	1.15	0.82	0.84	0.89	1.00
Netherlands	2.68	2.68	2.72	2.21	2.38
Canada	2.02	2.01	2.41	1.87	1.79
Belgium	2.85	3.19	3.46	2.57	2.85
Israel	(²)	1.40	(²)	2.50	1.06
Dominican Republic56	.63	.44	.41	.29
Jamaica	1.99	2.55	2.58	2.17	2.44
Pakistan	(²)	(²)	(²)	(²)	1.00
All other	2.21	1.83	1.83	1.83	2.75
Average	1.27	1.01	1.09	1.10	1.23

¹ Includes fresh or chilled peppers (Harmonized Tariff Schedule statistical reporting number 0709.60.0040) on a fresh-weight basis.

² Not applicable.

Note.--Because of rounding, figures may not add to the totals shown.

Source: Compiled from official statistics of the U.S. Department of Commerce.

Table 3
 Fresh-market peppers: U.S. imports for consumption from Mexico,¹ by major ports of entry, Jan. 1990-May 1995

(1,000 kilograms)					
Year/Month	Nogales	San Diego	Laredo	All other	Total
1990:					
Jan.	25,375	647	181	9	26,212
Feb.	21,738	716	207	3	22,665
Mar.	14,764	694	72	0	15,531
Apr.	4,505	1,429	128	0	6,063
May	402	1,712	133	0	2,247
June	3	738	91	0	832
July	62	905	166	3	1,137
Aug.	0	693	69	0	762
Sept.	0	432	83	0	515
Oct.	0	572	123	0	694
Nov.	1,632	1,945	82	0	3,659
Dec.	9,286	1,347	72	0	10,705
Total	77,769	11,831	1,408	15	91,022
1991:					
Jan.	20,013	873	91	0	20,976
Feb.	19,426	769	160	1	20,357
Mar.	13,729	759	223	0	14,711
Apr.	3,858	1,379	211	0	5,448
May	125	1,729	148	0	2,002
June	50	2,118	143	0	2,311
July	0	1,269	140	0	1,409
Aug.	1	1,412	124	159	1,695
Sept.	1	1,159	108	96	1,364
Oct.	0	1,838	66	31	1,934
Nov.	1,038	3,322	103	0	4,464
Dec.	9,047	1,507	109	0	10,663
Total	67,289	18,132	1,626	288	87,334
1992:					
Jan.	16,740	864	67	0	17,671
Feb.	14,431	806	75	(2)	15,312
Mar.	8,640	1,226	90	(2)	9,957
Apr.	4,317	1,814	94	0	6,225
May	105	1,787	40	0	1,932
June	15	1,277	22	0	1,314
July	0	855	54	0	909
Aug.	2	856	131	0	989
Sept.	1	1,144	164	17	1,326
Oct.	1	1,547	121	0	1,670
Nov.	992	1,019	100	0	2,112
Dec.	15,577	1,179	106	0	16,861
Total	60,821	14,374	1,064	18	76,277
1993:					
Jan.	22,031	1,239	128	0	23,398
Feb.	19,697	1,281	309	0	21,286
Mar.	18,048	1,552	753	9	20,361
Apr.	6,215	2,111	303	3	8,632
May	915	2,171	176	0	3,263
June	21	1,388	236	0	1,645
July	0	1,278	217	0	1,494
Aug.	0	1,059	291	0	1,350
Sept.	0	1,065	112	4	1,181
Oct.	6	2,334	99	0	2,439
Nov.	658	3,503	95	0	4,256
Dec.	9,610	2,201	118	0	11,929
Total	77,200	21,181	2,836	17	101,234
1994:					
Jan.	19,903	1,050	63	0	21,017
Feb.	20,372	937	9	48	21,366
Mar.	22,699	198	9	44	22,950
Apr.	8,499	1,226	25	8	9,758
May	1,501	3,557	94	2	5,154
June	443	911	7	0	1,361
July	0	197	13	0	210
Aug.	0	20	0	0	20
Sept.	0	80	0	0	80
Oct.	0	1,261	0	0	1,261
Nov.	912	1,400	0	0	2,312
Dec.	10,512	712	0	0	11,224
Total	84,841	11,549	221	161	96,713
1995:					
Jan.	22,390	725	22	3	23,140
Feb.	27,004	402	13	366	27,784
Mar.	18,408	207	8	209	18,832
Apr.	7,867	823	0	1	8,691
May	1,334	3,539	3	1	4,877

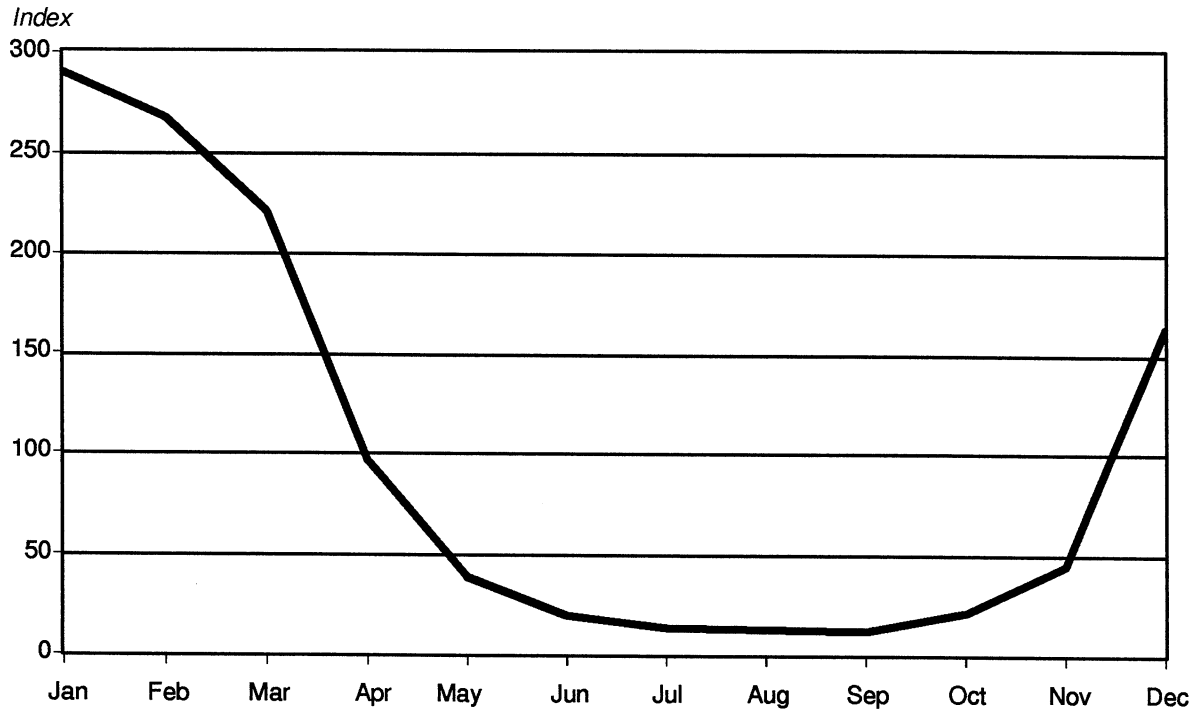
¹ Includes fresh or chilled peppers (Harmonized Tariff Schedule statistical reporting numbers 0709.60.0040 for 1990-94 period and 0709.60.4000 for 1995) on a fresh-weight basis.

² Less than 500 kilograms.

Note.--Because of rounding, figures may not add to the totals shown.

Source: Compiled from official statistics of the U.S. Department of Commerce.

Figure 1
Fresh-market peppers: Seasonal index¹ of U.S. imports from Mexico, 1990-1994



¹ The seasonal index is calculated as the average import volume for a particular month divided by the average monthly import volume for the 1990 through 1994 period. For instance, the average January import volume is 190 percent higher than the average monthly import volume for the overall period.

Source: Prepared by the staff of the U.S. International Trade Commission based on data reported by the U.S. Department of Commerce.

Table 4

Fresh-market peppers: U.S. exports of domestic merchandise,¹ by principal markets, 1990-94

Market	1990	1991	1992	1993	1994
<u>Quantity (1,000 kilograms)</u>					
Canada	66,581	73,271	80,032	52,392	50,736
Mexico	980	2,020	4,983	1,608	1,738
El Salvador	0	0	0	807	295
United Kingdom	133	148	171	144	149
Japan	7	36	154	18	105
Netherlands	121	43	148	185	94
Australia	23	96	83	175	47
Hong Kong	357	202	133	131	43
All other	398	220	223	131	168
Total	<u>68,599</u>	<u>76,037</u>	<u>85,926</u>	<u>55,591</u>	<u>53,375</u>
<u>Value (1,000 dollars)</u>					
Canada	36,547	43,042	45,330	45,805	43,891
Mexico	438	772	1,872	1,429	1,640
El Salvador	0	0	0	655	366
United Kingdom	105	89	72	192	164
Japan	7	21	76	31	194
Netherlands	68	21	79	144	100
Australia	22	72	84	117	73
Hong Kong	191	103	65	82	24
All other	233	104	148	185	326
Total	<u>37,611</u>	<u>44,224</u>	<u>47,726</u>	<u>48,639</u>	<u>46,777</u>
<u>Unit value (dollars per kilogram)</u>					
Canada	0.55	0.59	0.57	0.87	0.87
Mexico45	.38	.38	.89	.94
El Salvador	(²)	(²)	(²)	.81	1.24
United Kingdom79	.60	.42	1.33	1.10
Japan	1.00	.57	.49	1.71	1.85
Netherlands56	.50	.54	.78	1.06
Australia96	.74	1.01	.67	1.56
Hong Kong53	.51	.49	.62	.57
All other58	.47	.66	1.41	1.94
Average	<u>.55</u>	<u>.58</u>	<u>.56</u>	<u>.87</u>	<u>.88</u>

¹ Includes fresh or chilled peppers (*Schedule B* No. 0709.60.0000) on a fresh-weight basis.

² Not applicable.

Note.--Because of rounding, figures may not add to the totals shown.

Source: Compiled from official statistics of the U.S. Department of Commerce.

Table 5

Processed peppers: U.S. production and imports for consumption, 1990-94

Year	Production ¹	Imports ²
<u>Quantity (1,000 kilograms)</u>		
1990	16,630	8,356
1991	21,506	5,356
1992	26,334	5,714
1993	21,060	5,627
1994	19,449	6,023
<u>Value (1,000 dollars)</u>		
1990	(³)	12,219
1991	(³)	9,194
1992	(³)	10,218
1993	(³)	6,636
1994	(³)	7,803
<u>Unit value (dollars per kilogram)</u>		
1990	(⁴)	1.46
1991	(⁴)	1.72
1992	(⁴)	1.79
1993	(⁴)	1.18
1994	(⁴)	1.30

¹ Production data include frozen peppers and are not directly comparable with processed pepper import data. Values of production are not reported.

² Includes prepared or preserved peppers (*Harmonized Tariff Schedule* statistical reporting numbers 2005.90.5020, 2005.90.5040, and 2005.90.5510) on a processed-weight basis.

³ Not available.

⁴ Not applicable.

Note.--Data on exports of processed peppers are not separately reported.

Source: Production data compiled from official statistics of the American Frozen Food Institute; imports compiled from official statistics of the U.S. Department of Commerce.

Table 6

Processed peppers: U.S. imports for consumption,¹ by principal sources, 1990-94

Source	1990	1991	1992	1993	1994
	<i>Quantity (1,000 kilograms)</i>				
Spain	7,389	4,743	5,134	4,507	5,305
Greece	205	141	50	172	189
Chile	0	37	55	115	170
Italy	6	6	11	2	25
Colombia	0	0	0	0	44
Mexico	610	274	202	132	146
Israel	83	30	170	150	72
Peru	0	0	13	24	18
All other	63	126	79	525	54
Total	8,356	5,356	5,714	5,627	6,023
	<i>Value (1,000 dollars)</i>				
Spain	11,461	8,552	9,661	5,669	7,101
Greece	215	203	31	141	226
Chile	0	78	57	95	118
Italy	23	19	34	9	73
Colombia	0	0	0	0	70
Mexico	401	167	142	98	66
Israel	70	28	158	123	55
Peru	0	0	19	28	24
All other	50	146	115	472	70
Total	12,219	9,194	10,218	6,636	7,803
	<i>Unit value (dollars per kilogram)</i>				
Spain	1.55	1.80	1.88	1.26	1.34
Greece	1.05	1.44	.62	.82	1.19
Chile	(²)	2.12	1.04	.83	.69
Italy	3.75	3.32	3.08	4.38	2.93
Colombia	(²)	(²)	(²)	(²)	1.59
Mexico66	.61	.70	.74	.45
Israel84	.95	.93	.82	.76
Peru	(²)	(²)	1.47	1.19	1.36
All other79	1.16	1.46	.90	1.29
Average	1.46	1.72	1.79	1.18	1.30

¹ Includes prepared or preserved peppers (*Harmonized Tariff Schedule* statistical reporting numbers 2005.90.5020, 2005.90.5040, and 2005.90.5510) on a processed-weight basis.

² Not applicable.

Note.--Because of rounding, figures may not add to the totals shown.

Source: Compiled from official statistics of the U.S. Department of Commerce.

PRODUCTION AREA AND COSTS OF PRODUCTION

Table 7

Peppers:¹ U.S. planted and harvested area, production, yield, and production value data, by selected States and total, 1990-94

	1990 ²	1991 ²	1992	1993	1994
<u>Area (acres)</u>					
Area planted:					
Florida	23,100	20,700	21,100	21,900	22,100
California	18,407	20,388	20,000	18,500	19,000
North Carolina	8,000	8,000	8,200	8,100	7,000
New Jersey	5,400	5,000	5,300	5,300	5,400
All other	9,689	9,545	14,300	13,750	12,850
Total	64,596	63,633	68,900	67,550	66,350
Area harvested:					
Florida	20,200	20,000	20,400	20,900	21,100
California	18,407	20,388	20,000	18,500	19,000
North Carolina	7,000	7,600	7,800	7,400	6,600
New Jersey	5,400	5,000	5,300	5,300	5,200
All other	9,001	9,351	13,100	12,850	12,000
Total	60,008	62,339	66,600	64,950	63,950
<u>Quantity (metric tons)</u>					
Production:					
Florida	168,094	182,357	259,095	265,445	287,127
California	179,715	218,741	258,550	251,741	258,550
North Carolina	14,923	15,513	9,571	9,072	10,478
New Jersey	19,595	20,412	27,669	38,465	73,120
All other	67,469	77,122	99,565	92,897	89,722
Total	449,796	514,145	654,450	657,620	718,997
<u>Yield (metric tons per acre)</u>					
Yield:					
Florida	8.32	9.12	12.70	12.70	13.61
California	9.76	10.73	12.93	13.61	13.61
North Carolina	2.13	2.04	1.23	1.23	1.59
New Jersey	3.63	4.08	5.22	7.26	14.06
All other	7.50	8.25	7.60	7.23	7.48
Total	7.50	8.25	9.83	10.13	11.24

Table 7--Continued

Peppers:¹ U.S. planted and harvested area, production, yield, and production value data, by selected States and total, 1990-94

	1990	1991	1992	1993	1994
<u>Value (1,000 dollars)</u>					
Production:					
Florida	111,246	173,628	209,630	215,939	215,853
California	88,436	101,221	104,470	149,057	145,185
North Carolina	7,403	7,695	4,326	4,000	4,736
New Jersey	10,886	11,160	13,603	21,794	44,975
All other	<u>38,465</u>	<u>51,830</u>	<u>54,124</u>	<u>46,690</u>	<u>56,933</u>
Total	256,436	345,534	386,153	437,480	467,682
<u>Average unit value (dollars per kilogram)</u>					
Production:					
Florida	0.66	0.95	0.81	0.81	0.75
California49	.46	.40	.59	.56
North Carolina50	.50	.45	.44	.45
New Jersey55	.55	.49	.57	.62
All other	<u>.57</u>	<u>.67</u>	<u>.54</u>	<u>.50</u>	<u>.63</u>
Average57	.67	.59	.67	.65

¹ Includes data for fresh-market use and for processing. Data are not separately reported for each use.

² Estimated by the Commission staff.

Note.--Data for 1990 and 1991 may not be comparable with data for 1992-94.

Source: Compiled from official statistics of the Foreign Agricultural Service, U.S. Department of Agriculture, and from Vegetables, National Agricultural Statistics Service, U.S. Department of Agriculture, Washington, DC, 1990 Summary (June 1991), VG 1-2(91), 1992 Summary (Jan. 1993), VG 1-2(93), and 1994 Summary (Jan. 1995), VG 1-2(95).

Table 8
 Fresh-market peppers: Florida and Sinaloa harvested area,
 1985/86 to 1993/94

(Acres)		
Year	Florida	Sinaloa ¹
1985/86	19,200	12,926
1986/87	18,500	16,329
1987/88	20,400	15,281
1988/89	20,900	13,566
1989/90	20,200	11,322
1990/91	20,000	12,620
1991/92	20,600	12,328
1992/93	20,400	12,076
1993/94	21,600	11,597

¹ Includes data for export quality fresh-market peppers.

Source: Compiled from official statistics of the U.S. Department of Agriculture and from Confederacion de Asociaciones Agricolas del Estado de Sinaloa (CAADES).

Table 9

Estimated production costs¹ for fresh-market peppers grown in the Palm Beach County, FL, area, 1990/91 to 1993/94 seasons

<i>(Dollars per hectare)</i>				
Items	1990/91	1991/92	1992/93	1993/94
Preharvest costs:				
Operating costs:				
Transplants	1,729.74	1,729.74	1,729.74	1,729.74
Fertilizer and lime	812.98	862.15	605.41	672.13
Fumigant	434.90	459.62	780.85	830.27
Other pesticides	1,382.28	1,499.70	1,210.52	1,460.51
Surfactant	407.01	365.91	239.74	(2)
Labor	1,490.81	1,186.95	750.93	750.93
Machinery	805.46	647.66	529.67	547.93
Interest	350.86	324.03	309.67	292.33
Miscellaneous	<u>2,439.59</u>	<u>2,454.00</u>	<u>2,454.00</u>	<u>2,454.00</u>
Total operating costs	9,853.66	9,529.76	8,610.52	8,737.84
Fixed costs:				
Land rent	1,482.63	741.32	741.32	2,223.95
Machinery	324.10	297.02	297.02	282.61
Overhead	1,056.97	975.89	933.91	2,738.02
Management	(2)	(2)	653.74	2,190.41
Total fixed costs	<u>2,863.70</u>	<u>2,014.23</u>	<u>2,625.99</u>	<u>7,434.99</u>
Total preharvest costs	12,717.33	11,543.99	11,236.53	16,172.83
Harvest and marketing costs:				
Harvest, haul, and pack	3,953.68	3,953.68	3,558.31	3,558.32
Containers	2,174.53	2,223.95	2,001.55	2,001.55
Selling	<u>1,235.53</u>	<u>1,235.53</u>	<u>1,111.98</u>	<u>1,111.98</u>
Total harvest and marketing costs	<u>7,363.73</u>	<u>7,413.16</u>	<u>6,671.85</u>	<u>6,671.85</u>
Total estimated production costs	20,081.06	18,957.15	17,908.37	22,844.68

¹ These costs are constructed based on input prices obtained from various industry sources and are believed to reflect typical costs of production for growers in a given production area, but do not necessarily reflect the actual industry average cost of production.

² Not reported.

Source: Compiled from Production Cost for Selected Vegetables in Florida, 1990/1991, 1991/92, 1992/93 and 1993/94, Scott A. Smith and Timothy G. Taylor, Food and Resource Economics Department, Institute of Food and Agricultural Sciences, University of Florida, Gainesville, Florida, circular 1064: 1992, p. 15, circular 1121: 1993, p. 15.

Table 10

Estimated production costs¹ for fresh-market peppers grown in the Southwest Florida area, 1990/91 to 1993/94 seasons

(Dollars per hectare)				
Items	1990/91	1991/92	1992/93	1993/94
Preharvest costs:				
Operating costs:				
Transplants	1,729.74	1,729.74	1,729.74	1,729.74
Fertilizer and lime	889.83	862.15	819.65	903.17
Fumigant	469.50	459.62	696.84	785.79
Other pesticides	1,330.29	953.23	1,010.14	1,075.52
Surfactant	42.38	34.55	(2)	(2)
Labor	1,455.97	1,874.91	783.05	783.05
Machinery	1,432.86	1,246.47	911.00	962.94
Interest	307.79	599.85	490.28	414.62
Miscellaneous	<u>1,487.13</u>	<u>1,594.50</u>	<u>1,446.23</u>	<u>1,446.23</u>
Total operating costs	9,145.49	9,355.02	7,886.93	8,101.06
Fixed costs:				
Land rent	822.86	822.96	926.65	1,111.97
Machinery	625.60	612.72	588.85	564.83
Overhead	(2)	(2)	1,069.45	2,340.80
Management	<u>961.31</u>	<u>1,364.84</u>	<u>1,336.82</u>	<u>1,872.64</u>
Total fixed costs	<u>2,409.77</u>	<u>2,800.52</u>	<u>3,921.77</u>	<u>5,890.24</u>
Total preharvest costs	11,555.26	12,155.53	11,808.70	13,991.30
Harvest and marketing costs:				
Harvest, haul, and pack	6,894.23	6,894.24	6,943.66	6,943.65
Containers	1,878.00	1,878.00	1,878.00	1,878.00
Selling	<u>1,062.55</u>	<u>1,062.55</u>	<u>1,062.55</u>	<u>1,062.55</u>
Total harvest and marketing costs	<u>9,834.78</u>	<u>9,834.79</u>	<u>9,884.21</u>	<u>9,884.21</u>
Total estimated production costs	21,390.04	21,990.33	21,692.91	23,875.51

¹ These costs are constructed based on input prices obtained from various industry sources and are believed to reflect typical costs of production for growers in a given production area, but do not necessarily reflect the actual industry average cost of production.

² Not reported.

Source: Compiled from Production Cost for Selected Vegetables in Florida, 1990/1991, 1991/92, 1992/93 and 1993/94, Scott A. Smith and Timothy G. Taylor, Food and Resource Economics Department, Institute of Food and Agricultural Sciences, University of Florida, Gainesville, Florida, circular 1064: 1992, p. 15, circular 1121: 1993, p. 15.

SHIPMENTS AND ARRIVALS

Table 11
 Fresh-market peppers: Weekly quantities available at major shipping points, by sources, Jan. 1- Dec. 31, 1994

Week ending	(1,000 pounds)											
	U.S. product Piggyback						Truck					
	Florida	Calif-ornia	Other	Total	Florida	Calif-ornia	Other	Total	U.S. total	Import Mexico	Other	Total
Jan. 1	40	0	0	40	6,080	0	170	6,250	6,290	9,950	60	10,010
8	80	0	0	80	7,620	0	70	7,690	7,770	13,620	140	13,760
15	0	0	0	0	5,940	0	0	5,940	5,940	11,580	220	11,740
22	120	0	0	120	6,350	0	0	6,350	6,470	12,000	190	12,190
29	40	0	0	40	7,520	0	0	7,520	7,560	14,120	130	14,250
Feb. 5	80	0	0	80	7,130	0	0	7,130	7,210	15,330	80	15,410
12	40	0	0	40	9,190	0	0	9,190	9,230	16,050	90	16,140
19	90	0	0	90	8,090	0	0	8,090	8,180	10,360	50	10,410
26	160	0	0	160	9,900	0	0	9,900	10,060	14,080	30	14,110
Mar. 5	80	0	0	80	10,120	0	0	10,120	10,200	13,920	20	13,940
12	40	0	0	40	10,330	0	0	10,330	10,370	15,830	30	15,860
19	120	0	0	120	9,660	0	0	9,660	9,780	11,400	0	11,400
26	80	0	0	80	9,320	0	0	9,320	9,400	11,910	10	11,920
Apr. 2	250	0	0	250	9,390	0	0	9,390	9,640	6,780	40	6,820
9	80	0	0	80	8,850	0	0	8,850	8,930	7,080	120	7,200
16	120	0	0	120	15,150	0	0	15,150	15,270	7,260	530	7,790
23	80	0	0	80	12,420	60	0	12,480	12,560	5,380	450	5,830
30	40	0	0	40	14,500	220	0	14,720	14,760	4,160	860	5,020
May 7	40	0	0	40	12,360	680	0	13,040	13,080	3,840	240	4,080
14	120	40	0	160	10,920	600	80	11,600	11,760	3,160	40	3,200
21	160	160	0	320	8,750	320	650	9,720	10,040	2,370	60	2,430
28	0	330	0	330	4,410	760	6,800	11,970	12,300	1,480	190	1,670
June 4	80	210	0	290	2,200	470	7,700	10,370	10,660	1,650	890	2,540
11	0	370	0	370	2,110	0	8,450	10,560	10,930	1,430	520	1,950
18	0	370	0	370	610	0	9,820	10,430	10,800	470	520	990
25	0	80	0	80	80	0	10,990	11,070	11,150	180	680	860
July 2	0	40	0	40	100	0	9,810	9,910	9,950	280	530	810
9	0	40	0	40	60	0	7,680	7,740	7,780	220	250	470
16	0	120	0	120	20	0	3,460	3,480	3,600	240	250	490
23	0	0	0	0	0	0	2,480	2,480	2,480	270	490	760
30	0	80	0	80	0	0	2,720	2,720	2,800	260	40	300
Aug. 6	0	0	0	0	0	0	1,170	1,170	1,170	80	80	160
13	0	0	0	0	0	0	1,070	1,070	1,070	80	90	170
20	0	0	0	0	0	0	1,700	1,700	1,700	50	840	890
27	0	0	0	0	0	0	2,210	2,210	2,210	50	320	370
Sept. 3	0	0	0	0	0	0	2,380	2,380	2,380	110	280	390
10	0	0	0	0	0	0	2,250	2,250	2,250	70	160	230
17	0	0	0	0	0	0	1,810	1,810	1,810	30	40	70
24	0	40	0	40	0	0	1,130	1,130	1,170	60	20	80
Oct. 1	0	0	0	0	0	0	1,050	1,050	1,050	120	70	190
8	0	0	0	0	30	0	1,280	1,310	1,310	550	50	600
15	0	40	0	40	430	0	1,620	2,050	2,090	650	90	740
22	0	0	0	0	820	0	3,190	4,010	4,010	520	30	550
29	0	0	0	0	1,120	0	3,760	4,880	4,880	960	50	1,010

Table 11--Continued
 Fresh-market peppers: Weekly quantities available at major shipping points, by sources, Jan. 1- Dec. 31, 1994

Week ending	(1,000 pounds)												Grand total
	U.S. product			Truck			U.S. total			Import			
	Florida	Calif-ornia	Other	Florida	Calif-ornia	Other	Total	U.S. total	Mexico	Other	Total		
Nov. 5	0	0	0	3,140	0	7,990	11,130	11,130	990	60	1,050	12,180	
12	0	0	0	4,620	0	4,830	9,450	9,450	630	30	660	10,110	
19	0	0	0	4,710	0	4,790	9,500	9,500	920	40	960	10,460	
26	0	0	0	5,640	0	1,780	7,420	7,420	2,460	40	2,500	9,920	
Dec. 3	0	0	0	8,780	0	2,290	11,070	11,070	2,360	20	2,380	13,450	
10	0	0	0	9,550	0	2,750	12,300	12,300	3,600	90	3,690	15,990	
17	0	0	0	7,470	0	1,110	8,580	8,580	7,010	60	7,070	15,650	
24	0	0	0	4,610	0	780	5,390	5,390	7,250	10	7,260	12,650	
31	0	0	0	6,790	0	650	7,440	7,440	11,090	0	11,090	18,530	

Note.--Data for domestic shipments are obtained by the U.S. Department of Agriculture from various sources, including Federal marketing order administrative committees, Federal-State inspection service, shippers, and transportation agencies. Mexico data are border crossings secured from records of the Animal and Plant Health Inspection Service of the U.S. Department of Agriculture.

Source: Compiled from data of the Agricultural Marketing Service, U.S. Department of Agriculture.

Table 12
 Fresh-market peppers: Weekly quantities available at major shipping points, by sources, Jan. 7-June 3, 1995
 (1,000 pounds)

Week ending	U.S. product										Grand total			
	Piggyback					Truck								
	Florida	Calif-ornia	Other	Total	Total	Florida	Calif-ornia	Other	Total	U.S. total				
Jan. 7	0	0	0	0	4,020	0	570	0	4,590	4,590	12,780	20	12,800	17,390
14	0	0	0	0	3,670	0	710	0	4,380	4,380	10,960	0	10,960	15,340
21	0	0	0	0	4,380	0	480	0	4,860	4,860	12,680	0	12,680	17,540
28	0	0	0	0	4,120	0	710	0	4,830	4,830	12,150	0	12,150	16,980
Feb. 4	0	0	0	0	5,130	0	530	0	5,660	5,660	12,960	10	12,970	18,630
11	0	0	0	0	4,510	0	290	0	4,800	4,800	13,860	0	13,860	18,660
18	0	0	0	0	3,870	0	90	0	3,960	3,960	22,650	0	22,650	26,610
25	0	0	0	0	5,320	0	0	0	5,320	5,320	19,670	10	19,680	25,000
Mar. 4	0	0	0	0	3,850	0	0	0	3,850	3,850	17,000	0	17,000	20,850
11	0	0	0	0	2,800	0	0	0	2,800	2,800	10,540	0	10,540	13,340
18	0	0	0	0	4,910	0	10	0	4,920	4,920	9,840	0	9,840	14,760
25	0	0	0	0	5,060	0	0	0	5,060	5,060	9,610	0	9,610	14,670
Apr. 1	0	0	0	0	4,340	0	0	0	4,340	4,340	8,270	30	8,300	12,640
8	0	0	0	0	7,450	0	0	0	7,450	7,450	8,590	50	8,640	16,090
15	80	0	0	80	9,730	0	0	0	9,730	9,810	5,420	50	5,470	15,280
22	40	0	0	40	8,500	130	0	0	8,430	8,470	4,120	50	4,170	12,640
29	0	0	0	0	10,630	780	0	0	11,410	11,410	2,370	70	2,430	13,850
May 6	0	0	0	0	11,000	1,630	0	0	12,630	12,630	3,040	100	3,140	15,770
13	0	80	0	80	10,660	1,170	0	0	11,830	11,910	2,390	20	2,410	14,320
20	0	370	0	370	9,950	920	0	0	10,870	11,240	3,290	60	3,350	14,590
27	40	0	0	40	5,740	1,000	830	0	7,570	7,610	2,720	20	2,740	10,350
June 3	0	0	0	0	3,320	1,720	2,910	0	7,950	7,950	1,880	60	1,940	9,890

Note.--Data for domestic shipments are obtained by the U.S. Department of Agriculture from various sources, including Federal marketing order administrative committees, Federal-State inspection service, shippers, and transportation agencies. Mexico data are border crossings secured from records of the Animal and Plant Health Inspection Service of the U.S. Department of Agriculture.

Source: Compiled from data of the Agricultural Marketing Service, U.S. Department of Agriculture.

Table 13

Fresh-market peppers: Weekly shipments from all sources, by weeks, Dec. 3-
June 3, 1989/90 to 1994/95

(1,000 pounds)

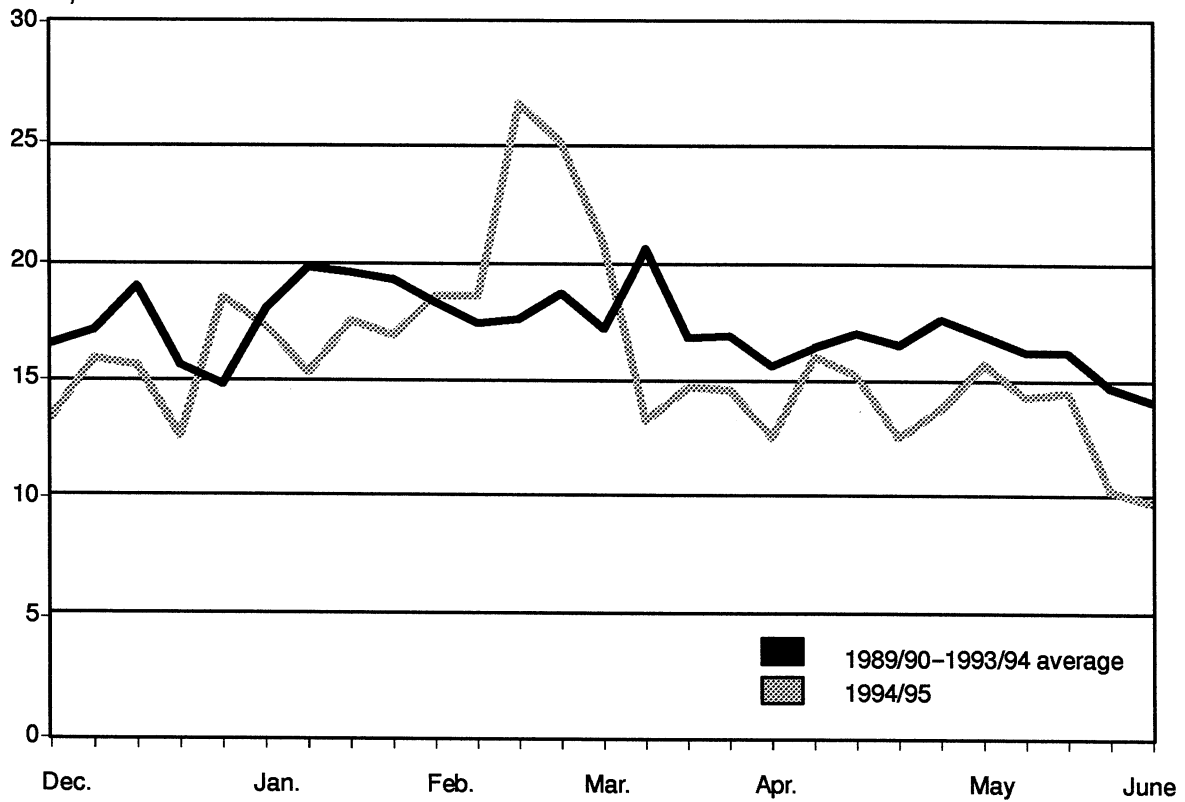
Week ending	1989/90	1990/91	1991/92	1992/93	1993/94	1989/90- 1993/94 average	1994/95
Dec. 3.....	17,164	18,088	16,884	15,876	14,812	16,565	13,450
10.....	16,156	17,752	17,276	18,788	15,960	17,186	15,990
17.....	18,788	18,564	19,152	19,880	18,984	19,074	15,650
24.....	11,200	18,564	16,632	17,612	14,364	15,674	12,650
31.....	14,728	13,664	12,516	16,912	16,270	14,818	18,530
Jan. 7.....	14,420	15,652	19,040	19,880	21,300	18,058	17,390
14.....	16,464	24,584	16,576	24,192	17,260	19,815	15,340
21.....	16,856	18,200	18,956	25,676	18,320	19,602	17,540
28.....	14,560	22,624	17,752	20,776	20,820	19,306	16,980
Feb. 4.....	14,532	17,444	10,752	26,880	22,080	18,338	18,630
11.....	14,028	16,352	12,824	18,676	25,370	17,450	18,660
18.....	8,932	19,768	20,272	20,720	18,590	17,656	26,610
25.....	17,332	20,104	15,708	16,212	24,170	18,705	25,000
Mar. 4.....	15,400	15,288	11,480	22,232	24,140	17,708	20,850
11.....	19,544	20,972	18,312	18,424	26,230	20,696	13,340
18.....	16,044	15,876	14,980	15,988	21,180	16,814	14,760
25.....	15,260	14,308	17,444	16,632	21,320	16,993	14,670
Apr. 1.....	19,880	14,252	12,572	14,868	16,460	15,606	12,640
8.....	19,992	14,644	15,988	15,456	16,130	16,442	16,090
15.....	18,480	14,308	15,960	13,440	23,060	17,050	15,280
22.....	19,964	16,324	16,520	11,648	18,390	16,569	12,640
29.....	19,348	17,836	16,072	11,536	19,780	16,914	13,850
May 6.....	21,924	16,912	18,480	13,272	17,420	17,602	15,770
13.....	22,876	15,932	16,940	13,580	15,510	16,968	14,320
20.....	24,220	15,176	14,672	11,872	15,440	16,276	14,590
27.....	18,564	14,112	14,756	11,872	14,490	14,759	10,350
June 3.....	17,696	15,344	13,748	10,332	13,840	14,192	9,890

Note.--The week ending date is for the current 1994/95 year. The data for the 1989/90 through 1993/94 seasons represent the closest corresponding weeks to that date.

Source: Compiled from data of the Agricultural Marketing Service, U.S. Department of Agriculture.

Figure 2
Fresh-market peppers: Weekly shipments from all sources, by weeks, Dec. 3-June 3,
1989/90-1993/94 5-year average and 1994/95

Million pounds



Source: Compiled from data of the Agriculture Marketing Service, U.S. Department of Agriculture.

Table 14
 Fresh-market peppers: Percent of 1989/90-1993/94 5-year average
 total reported U.S. weekly shipments from all sources, by weeks, Dec. 3-
 June 3, 1989/90 to 1994/95

(Percent)						
Week ending	1989/90	1990/91	1991/92	1992/93	1993/94	1994/95
Dec. 3.....	103.6	109.2	101.9	95.8	89.4	81.2
10.....	94.0	103.3	100.5	109.3	92.9	93.0
17.....	98.5	97.3	100.4	104.2	99.5	82.1
24.....	71.5	118.4	106.1	112.4	91.6	80.7
31.....	99.4	92.2	84.5	114.1	109.8	125.1
Jan. 7.....	79.9	86.7	105.4	110.1	118.0	96.3
14.....	83.1	124.1	83.7	122.1	87.1	77.4
21.....	86.0	92.8	96.7	131.0	93.5	89.5
28.....	75.4	117.2	91.9	107.6	107.8	88.0
Feb. 4.....	79.2	95.1	58.6	146.6	120.4	101.6
11.....	80.4	93.7	73.5	107.0	145.4	106.9
18.....	50.6	112.0	114.8	117.4	105.3	150.7
25.....	92.7	107.5	84.0	86.7	129.2	133.7
Mar. 4.....	87.0	86.3	64.8	125.5	136.3	117.7
11.....	94.4	101.3	88.5	89.0	126.7	64.5
18.....	95.4	94.4	89.1	95.1	126.0	87.8
25.....	89.8	84.2	102.7	97.9	125.5	86.3
Apr. 1.....	127.4	91.3	80.6	95.3	105.5	81.0
8.....	121.6	89.1	97.2	94.0	98.1	97.9
15.....	108.4	83.9	93.6	78.8	135.3	89.6
22.....	120.5	98.5	99.7	70.3	111.0	76.3
29.....	114.4	105.4	95.0	68.2	116.9	81.9
May 6.....	124.6	96.1	105.0	75.4	99.0	89.6
13.....	134.8	93.9	99.8	80.0	91.4	84.4
20.....	148.8	93.2	90.1	72.9	94.9	89.6
27.....	125.8	95.6	100.0	80.4	98.2	70.1
June 3.....	124.7	108.1	96.9	72.8	97.5	69.7

Note.--The week ending date is for the current 1994/95 year. The data for the 1989/90 through 1993/94 seasons represent the closest corresponding weeks to that date.

Source: Compiled from data of the Agricultural Marketing Service, U.S. Department of Agriculture.

Table 15

Fresh-market peppers: Weekly shipments from Florida, by weeks, Dec. 3-June 3, 1989/90 to 1994/95

(1,000 pounds)

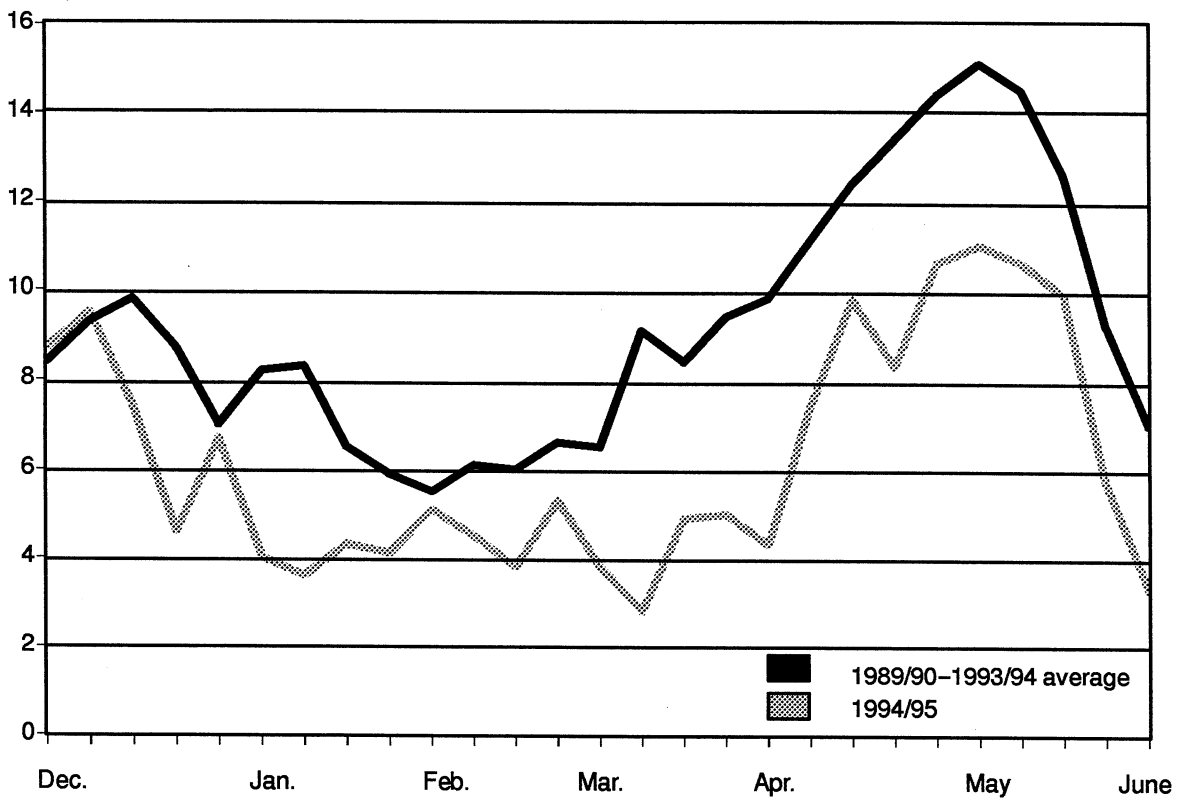
Week ending	1989/90	1990/91	1991/92	1992/93	1993/94	1989/90- 1993/94 average	1994/95
Dec. 3.....	8,876	7,196	7,084	9,184	9,856	8,439	8,780
10.....	8,820	9,408	7,980	9,520	10,976	9,341	9,550
17.....	9,464	9,240	11,480	8,680	10,612	9,895	7,470
24.....	6,804	11,172	12,684	6,328	6,748	8,747	4,610
31.....	5,096	8,008	8,960	6,972	6,140	7,035	6,790
Jan. 7.....	4,368	12,180	7,952	8,932	7,610	8,208	4,020
14.....	3,668	13,216	9,492	9,940	5,680	8,399	3,670
21.....	1,988	7,448	7,196	9,716	6,320	6,534	4,380
28.....	952	7,980	6,916	7,392	6,700	5,988	4,120
Feb. 4.....	1,148	5,936	6,356	7,588	6,750	5,556	5,130
11.....	1,456	6,468	6,300	7,392	9,230	6,169	4,510
18.....	672	7,644	7,336	6,468	8,180	6,060	3,870
25.....	2,184	6,608	7,840	6,552	10,060	6,649	5,320
Mar. 4.....	2,912	6,244	6,916	8,540	10,200	6,962	3,850
11.....	5,628	9,968	13,188	7,756	9,230	9,154	2,800
18.....	7,588	9,072	9,548	6,328	9,780	8,463	4,910
25.....	10,276	9,604	10,668	7,140	9,400	9,418	5,060
Apr. 1.....	12,516	9,548	8,932	8,568	9,640	9,841	4,340
8.....	14,448	9,772	11,900	10,668	8,930	11,144	7,450
15.....	14,336	11,676	12,124	8,624	15,270	12,406	9,810
22.....	18,004	14,868	13,748	7,980	12,500	13,420	8,340
29.....	18,368	16,576	14,252	8,652	14,210	14,412	10,630
May 6.....	20,440	15,344	17,584	9,660	12,600	15,126	11,000
13.....	20,720	14,336	16,212	10,248	11,060	14,515	10,660
20.....	19,068	12,796	14,028	7,392	9,750	12,607	9,950
27.....	11,760	8,848	13,384	7,672	4,490	9,231	5,780
June 3.....	8,736	5,796	11,732	6,468	2,280	7,002	3,320

Note.--The week ending date is for the current 1994/95 year. The data for the 1989/90 through 1993/94 seasons represent the closest corresponding weeks to that date.

Source: Compiled from data of the Agricultural Marketing Service, U.S. Department of Agriculture.

Figure 3
Fresh-market peppers: Weekly shipments from Florida, by weeks, Dec. 3-June 3,
1989/90-1993/94 5-year average and 1994/95

Million pounds



Source: Compiled from data of the Agriculture Marketing Service, U.S. Department of Agriculture.

Table 16

Fresh-market peppers: Percent of total reported U.S. weekly shipments from Florida, by weeks, Dec. 3-June 3, 1989/90 to 1994/95

(Percent)							
Week ending	1989/90	1990/91	1991/92	1992/93	1993/94	1989/90- 1993/94 average	1994/95
Dec. 3.....	51.7	39.8	42.0	57.8	66.5	50.9	65.3
10.....	54.6	53.0	46.2	50.7	68.8	54.3	59.7
17.....	50.4	49.8	59.9	43.7	55.9	51.9	47.7
24.....	60.8	60.2	76.3	35.9	47.0	55.8	36.4
31.....	34.6	58.6	71.6	41.2	37.7	47.5	36.6
Jan. 7.....	30.3	77.8	41.8	44.9	35.7	45.5	23.1
14.....	22.3	53.8	57.3	41.1	32.9	42.4	23.9
21.....	11.8	40.9	38.0	37.8	34.5	33.3	25.0
28.....	6.5	35.3	39.0	35.6	32.2	31.0	24.3
Feb. 4.....	7.9	34.0	59.1	28.2	30.6	30.3	27.5
11.....	10.4	39.6	49.1	39.6	36.4	35.4	24.2
18.....	7.5	38.7	36.2	31.2	44.0	34.3	14.5
25.....	12.6	32.9	49.9	40.4	41.6	35.5	21.3
Mar. 4.....	18.9	40.8	60.2	38.4	42.3	39.3	18.5
11.....	28.8	47.5	72.0	42.1	35.2	44.2	21.0
18.....	47.3	57.1	63.7	39.6	46.2	50.3	33.3
25.....	67.3	67.1	61.2	42.9	44.1	55.4	34.5
Apr. 1.....	63.0	67.0	71.0	57.6	58.6	63.1	34.3
8.....	72.3	66.7	74.4	69.0	55.4	67.8	46.3
15.....	77.6	81.6	76.0	64.2	66.2	72.8	64.2
22.....	90.2	91.1	83.2	68.5	68.0	81.0	66.0
29.....	94.9	92.9	88.7	75.0	71.8	85.2	76.8
May 6.....	93.2	90.7	95.2	72.8	72.3	85.9	69.8
13.....	90.6	90.0	95.7	75.5	71.3	85.5	74.4
20.....	78.7	84.3	95.6	62.3	63.1	77.5	68.2
27.....	63.3	62.7	90.7	64.6	31.0	62.5	55.8
June 3.....	49.4	37.8	85.3	62.6	16.5	49.3	33.6

Note.--The week ending date is for the current 1994/95 year. The data for the 1989/90 through 1993/94 seasons represent the closest corresponding weeks to that date.

Source: Compiled from data of the Agricultural Marketing Service, U.S. Department of Agriculture.

Table 17

Fresh-market peppers: Weekly shipments from Mexico, by weeks, Dec. 3-June 3, 1989/90 to 1994/95

(1,000 pounds)

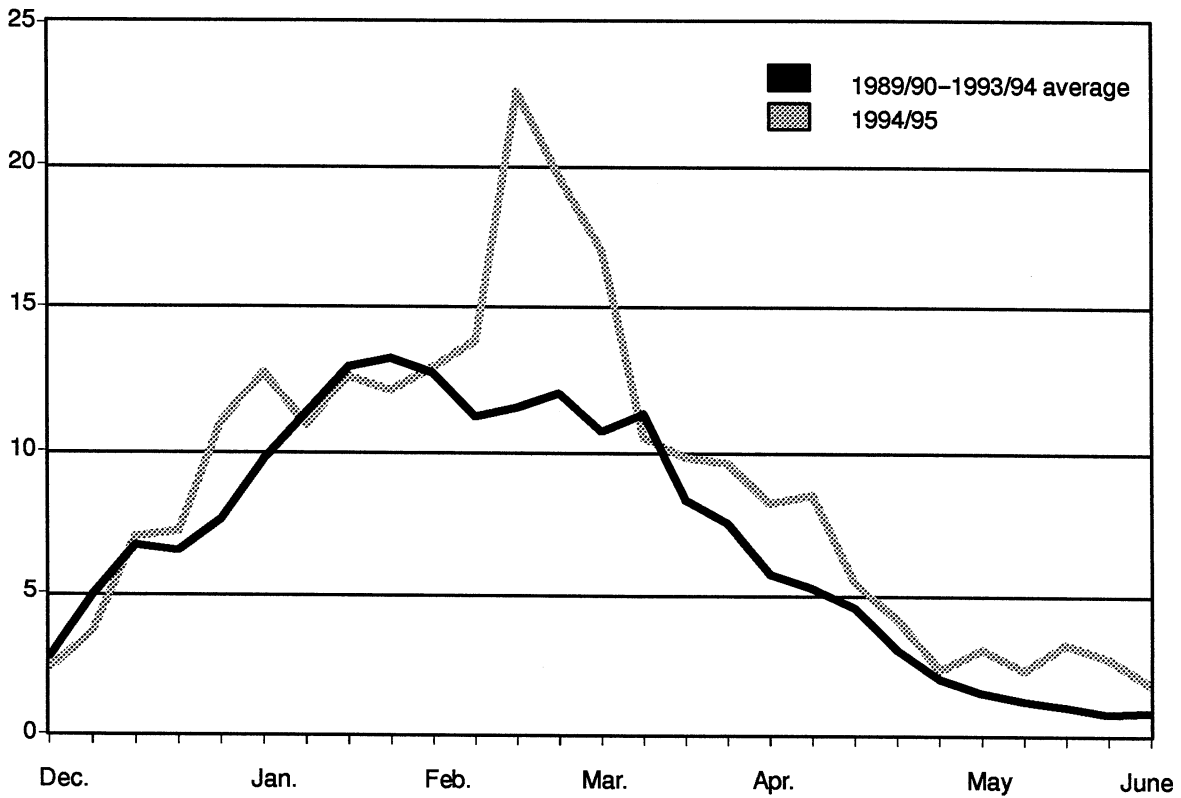
Week ending	1989/90	1990/91	1991/92	1992/93	1993/94	1989/90-	1994/95
						1993/94 average	
Dec. 3.....	1,736	3,472	3,052	2,940	2,520	2,744	2,360
10.....	4,424	4,648	4,368	7,700	3,360	4,900	3,600
17.....	6,160	7,028	2,716	10,500	7,420	6,765	7,010
24.....	3,920	6,748	3,444	11,284	7,336	6,546	7,250
31.....	9,632	5,600	3,248	9,940	9,950	7,674	11,090
Jan. 7.....	10,052	3,472	10,528	10,892	13,620	9,713	12,780
14.....	12,796	11,368	6,692	14,252	11,580	11,338	10,960
21.....	14,868	10,752	11,032	15,960	12,000	12,922	12,680
28.....	13,608	14,644	10,304	13,384	14,120	13,212	12,150
Feb. 4.....	13,384	11,508	4,228	19,292	15,330	12,748	12,960
11.....	12,572	9,884	6,384	11,284	16,050	11,235	13,860
18.....	8,260	12,124	12,768	14,252	10,360	11,553	22,650
25.....	15,148	13,496	7,812	9,660	14,080	12,039	19,670
Mar. 4.....	12,488	9,044	4,564	13,692	13,920	10,742	17,000
11.....	13,916	11,004	5,124	10,668	15,830	11,308	10,540
18.....	8,456	6,804	5,404	9,660	11,400	8,345	9,840
25.....	4,984	4,704	6,776	9,492	11,910	7,573	9,610
Apr. 1.....	7,364	4,704	3,640	6,300	6,780	5,758	8,270
8.....	5,544	4,872	4,088	4,788	7,080	5,274	8,590
15.....	4,144	2,632	3,836	4,816	7,260	4,538	5,420
22.....	1,932	1,456	2,772	3,668	5,380	3,042	4,120
29.....	840	1,148	1,820	2,352	4,160	2,064	2,370
May 6.....	924	336	896	1,652	3,850	1,532	3,040
13.....	924	196	728	1,148	3,150	1,229	2,390
20.....	840	448	644	868	2,370	1,034	3,290
27.....	700	644	308	616	1,480	750	2,720
June 3.....	504	840	644	476	1,650	823	1,880

Note.--The week ending date is for the current 1994/95 year. The data for the 1989/90 through 1993/94 seasons represent the closest corresponding weeks to that date.

Source: Compiled from data of the Agricultural Marketing Service, U.S. Department of Agriculture.

Figure 4
Fresh-market peppers: Weekly shipments from Mexico, by weeks Dec. 3-June 3,
1989/90-1993/94 5-year average and 1994/95

Million pounds



Source: Compiled from data of the Agriculture Marketing Service, U.S. Department of Agriculture.

Table 18

Fresh-market peppers: Percent of total reported U.S. weekly shipments from Mexico, by weeks, Dec. 3-June 3, 1989/90 to 1994/95

(Percent)

Week ending	1989/90	1990/91	1991/92	1992/93	1993/94	1989/90- 1993/94 average	1994/95
Dec. 3.....	10.1	19.2	18.1	18.5	17.0	16.6	17.5
10.....	27.4	26.2	25.3	41.0	21.1	28.5	22.5
17.....	32.8	37.9	14.2	52.8	39.1	35.5	44.8
24.....	35.0	36.3	20.7	64.1	51.1	41.8	57.3
31.....	65.4	41.0	26.0	58.8	61.2	51.8	59.8
Jan. 7.....	69.7	22.2	55.3	54.8	63.9	53.8	73.5
14.....	77.7	46.2	40.4	58.9	67.1	57.2	71.4
21.....	88.2	59.1	58.2	62.2	65.5	65.9	72.3
28.....	93.5	64.7	58.0	64.4	67.8	68.4	71.6
Feb. 4.....	92.1	66.0	39.3	71.8	69.4	69.5	69.6
11.....	89.6	60.4	49.8	60.4	63.3	64.4	74.3
18.....	92.5	61.3	63.0	68.8	55.7	65.4	85.1
25.....	87.4	67.1	49.7	59.6	58.3	64.4	78.7
Mar. 4.....	81.1	59.2	39.8	61.6	57.7	60.7	81.5
11.....	71.2	52.5	28.0	57.9	60.4	54.6	79.0
18.....	52.7	42.9	36.1	60.4	53.8	49.6	66.7
25.....	32.7	32.9	38.8	57.1	55.9	44.6	65.5
Apr. 1.....	37.0	33.0	29.0	42.4	41.2	36.9	65.4
8.....	27.7	33.3	25.6	31.0	43.9	32.1	53.4
15.....	22.4	18.4	24.0	35.8	31.5	26.6	35.5
22.....	9.7	8.9	16.8	31.5	29.3	18.4	32.6
29.....	4.3	6.4	11.3	20.4	21.0	12.2	17.1
May 6.....	4.2	2.0	4.8	12.4	22.1	8.7	19.3
13.....	4.0	1.2	4.3	8.5	20.3	7.2	16.7
20.....	3.5	3.0	4.4	7.3	15.3	6.4	22.5
27.....	3.8	4.6	2.1	5.2	10.2	5.1	26.3
June 3.....	2.8	5.5	4.7	4.6	11.9	5.8	19.0

Note.--The week ending date is for the current 1994/95 year. The data for the 1989/90 through 1993/94 seasons represent the closest corresponding weeks to that date.

Source: Compiled from data of the Agricultural Marketing Service, U.S. Department of Agriculture.

Table 19

Fresh-market peppers: Weekly arrivals at Boston and New York City wholesale terminal markets, by markets and by sources, Jan 7-Dec. 30, 1994

		(1,000 pounds)									
Week ending	Boston					New York City					
	Calif-ornia	Florida	Mexico	Other	Total	Calif-ornia	Florida	Mexico	Other	Total	
Jan.	7	0	1,080	140	0	1,220	0	2,050	460	30	2,540
	14	0	770	320	0	1,090	0	3,160	610	80	3,850
	21	0	800	300	0	1,100	0	1,630	170	10	1,810
	28	0	740	250	0	990	0	1,670	170	0	1,840
Feb.	4	0	930	400	0	1,330	0	2,260	280	10	2,550
	11	0	920	340	0	1,260	0	540	190	10	740
	18	0	870	410	10	1,290	0	3,100	610	20	3,730
	25	0	840	130	0	970	0	1,740	330	0	2,070
Mar.	4	0	2,000	40	60	2,100	0	2,090	420	40	2,550
	11	0	1,380	540	0	1,920	0	1,830	180	0	2,010
	18	0	970	230	0	1,200	0	1,680	40	0	1,720
	25	0	830	190	0	1,020	0	2,450	730	20	3,200
Apr.	1	0	1,380	160	0	1,540	0	820	260	0	1,080
	8	0	1,300	90	70	1,460	0	2,040	200	0	2,240
	15	0	1,280	80	10	1,370	0	1,410	190	110	1,710
	22	0	1,420	40	10	1,470	0	2,730	200	50	2,980
	29	0	1,020	20	50	1,090	0	1,710	430	50	2,190
May	6	0	1,570	20	20	1,610	0	1,270	110	110	1,490
	13	170	1,100	50	20	1,340	50	2,550	160	20	2,780
	20	110	1,140	60	80	1,390	110	2,040	10	20	2,180
	27	190	720	10	290	1,210	110	1,600	220	30	1,960
June	3	240	420	10	630	1,300	140	1,070	0	120	1,330
	10	150	310	20	710	1,190	720	770	110	570	2,170
	17	190	150	40	740	1,120	320	120	0	300	740
	24	70	50	90	1,350	1,560	520	120	70	1,340	2,050
July	1	140	30	0	1,180	1,350	560	30	0	1,530	2,120
	8	40	0	0	630	670	180	0	10	880	1,070
	15	140	0	0	620	760	140	0	0	1,400	1,540
	22	260	0	20	690	970	110	0	60	1,540	1,710
	29	30	0	20	710	760	200	0	120	1,170	1,490
Aug.	5	20	0	10	720	750	150	0	270	1,390	1,810
	12	50	0	0	480	530	20	0	0	1,150	1,170
	19	0	0	0	0	0	0	0	0	0	0
	26	130	0	0	790	920	140	0	0	1,450	1,590
Sept.	2	240	0	0	710	950	180	0	0	600	780
	9	70	0	0	600	670	70	0	0	720	790
	16	60	0	0	560	620	40	0	0	800	840
	23	360	0	0	670	1,030	450	0	0	1,180	1,630
	30	400	0	0	350	750	90	0	0	890	980
Oct.	7	550	80	0	340	970	290	0	0	1,120	1,410
	14	800	70	0	380	1,250	280	40	0	490	810
	21	610	170	70	340	1,190	0	0	0	180	180
	28	340	240	0	250	830	740	70	50	640	1,500
Nov.	4	310	470	0	410	1,190	460	350	0	390	1,200
	11	70	440	20	280	810	90	170	0	290	550
	18	90	980	40	110	1,220	200	350	0	110	660
	25	50	1,040	0	40	1,130	1,040	290	0	170	1,500
Dec.	2	10	1,130	0	80	1,220	20	760	10	180	970
	9	10	1,170	0	100	1,280	0	730	0	130	860
	16	0	1,190	0	80	1,270	0	1,110	0	330	1,440
	23	10	1,060	40	10	1,120	0	1,650	0	170	1,820
	30	0	580	150	40	770	0	1,040	180	0	1,220

Note.--This table shows weekly arrivals at the wholesale terminal markets in selected cities. It should be noted that a significant share of shipments are sold directly from the shipping point and are not traded at the wholesale market. Nonetheless, the relative shares of product from the different sources sold at wholesale market are believed to be indicative of the overall trade for the region.

Source: Compiled from data of the Agricultural Marketing Services, U.S. Department of Agriculture.

Table 20

Fresh-market peppers: Weekly arrivals at Boston and New York City wholesale terminal markets, by markets and by sources, Jan. 6-June 2, 1995

		(1,000 pounds)									
Week ending	Boston					New York City					
	Calif-ornia	Florida	Mexico	Other	Total	Calif-ornia	Florida	Mexico	Other	Total	
Jan. 6	0	1,080	220	0	1,300	0	1,330	320	10	1,660	
13	0	720	420	0	1,140	0	1,940	30	20	1,990	
20	0	580	350	20	950	0	770	40	0	810	
27	0	810	360	0	1,170	0	1,250	0	0	1,250	
Feb. 3	0	670	290	10	970	0	1,190	310	10	1,510	
10	0	750	340	0	1,090	0	1,110	410	0	1,520	
17	0	650	0	250	900	0	880	0	310	1,190	
24	0	690	260	0	950	0	300	200	0	500	
Mar. 3	0	1,280	410	0	1,690	0	1,470	180	0	1,650	
10	0	960	380	0	1,340	0	1,380	660	0	2,040	
17	0	800	150	0	950	0	2,100	400	0	2,500	
24	0	870	60	10	940	0	2,510	860	0	3,370	
31	0	910	70	10	990	0	1,210	590	10	1,810	
Apr. 7	0	1,040	50	20	1,110	0	1,190	490	0	1,680	
14	0	1,110	80	10	1,200	0	790	150	10	950	
21	0	1,350	40	30	1,420	0	800	120	0	920	
28	20	1,820	20	20	1,880	0	990	0	30	1,020	
May 5	90	1,590	10	50	1,740	0	1,260	300	0	1,560	
12	90	1,820	20	70	2,000	0	1,160	220	20	1,400	
19	220	1,600	0	50	1,870	40	1,660	200	10	1,910	
26	260	1,300	10	90	1,660	0	1,300	30	20	1,350	
June 2	200	640	0	370	1,210	0	1,200	10	0	1,210	

Note.--This table shows weekly arrivals at the wholesale terminal markets in selected cities. It should be noted that a significant share of shipments are sold directly from the shipping point and are not traded at the wholesale market. Nonetheless, the relative shares of product from the different sources sold at wholesale market are believed to be indicative of the overall trade for the region.

Source: Compiled from data of the Agricultural Marketing Services, U.S. Department of Agriculture.

Table 21
 Fresh-market peppers: Weekly arrivals at Philadelphia and Chicago wholesale terminal markets, by markets and by sources, Jan 7-Dec. 30, 1994

Week ending	(1,000 pounds)									
	Philadelphia					Chicago				
	Calif-ornia	Florida	Mexico	Other	Total	Calif-ornia	Florida	Mexico	Other	Total
Jan. 7	0	340	50	0	390	0	1,370	540	0	1,910
14	0	310	150	0	460	0	780	50	0	830
21	0	400	40	10	450	0	540	190	0	730
28	0	580	160	10	750	0	1,070	300	20	1,390
Feb. 4	0	420	70	0	490	0	850	140	20	1,010
11	0	580	190	0	770	0	800	210	40	1,050
18	0	560	260	0	820	0	670	280	0	950
25	0	470	120	0	590	0	590	270	10	870
Mar. 4	0	800	120	0	920	0	1,350	340	10	1,700
11	0	680	150	0	830	0	910	390	0	1,300
18	0	640	230	0	870	0	690	320	0	1,010
25	0	730	60	0	790	0	850	370	0	1,220
Apr. 1	0	1,010	90	0	1,100	0	830	380	0	1,210
8	0	550	10	0	560	0	680	370	0	1,050
15	0	710	30	0	740	0	780	300	10	1,090
22	0	850	30	10	890	0	890	420	10	1,320
29	0	610	90	0	700	0	1,050	420	0	1,470
May 6	0	500	50	0	550	20	880	90	0	990
13	0	1,120	80	0	1,200	60	950	200	10	1,220
20	0	630	10	20	660	0	870	270	50	1,190
27	50	490	80	30	650	40	870	280	40	1,230
June 3	40	190	0	70	300	50	430	0	150	630
10	60	310	90	220	680	310	490	10	390	1,200
17	80	230	180	240	730	160	400	70	410	1,040
24	80	320	30	300	730	410	40	70	670	1,190
July 1	190	270	0	460	920	450	0	0	1,130	1,580
8	20	0	0	480	500	330	0	0	720	1,050
15	0	0	0	510	510	390	0	0	860	1,250
22	140	0	0	540	680	390	0	0	560	950
29	40	0	0	550	590	680	0	0	360	1,040
Aug. 5	70	0	0	480	550	510	0	0	900	1,410
12	30	0	0	460	490	310	0	0	920	1,230
19	0	0	0	0	0	0	0	0	0	0
26	0	0	0	470	470	270	0	0	730	1,000
Sept. 2	120	0	0	440	560	160	0	0	550	710
9	200	0	0	360	560	30	0	0	680	710
16	120	0	0	600	720	180	0	0	710	890
23	250	0	0	530	780	120	0	0	590	710
30	200	0	0	540	740	220	0	0	680	900
Oct. 7	120	10	0	490	620	180	0	0	410	590
14	140	30	0	440	610	390	70	0	470	930
21	240	30	20	320	610	280	40	20	200	540
28	150	60	0	160	370	370	260	0	220	8,570
Nov. 4	40	390	0	190	620	180	270	30	420	900
11	220	280	0	70	570	40	460	230	920	1,650
18	60	240	0	20	320	40	900	30	1,180	2,150
25	0	560	0	60	620	0	970	0	450	1,420
Dec. 2	50	530	0	80	660	0	1,150	0	420	1,570
9	50	400	20	30	500	0	1,210	40	650	1,900
16	0	650	0	0	650	0	1,390	0	690	2,080
23	0	450	0	40	490	0	1,280	1,030	110	2,420
30	0	150	70	10	230	0	630	580	90	1,300

Note.--Data for domestic shipments are obtained by the U.S. Department of Agriculture from various sources, including Federal marketing order administrative committees, Federal-State inspection service, shippers, and transportation agencies. Mexico data are border crossings secured from records of the Animal and Plant Health Inspection Service of the U.S. Department of Agriculture.

Source: Compiled from data of the Agricultural Marketing Services, U.S. Department of Agriculture.

Table 22

Fresh-market peppers: Weekly arrivals at Philadelphia and Chicago wholesale terminal markets, by markets and by sources, Jan. 6-June 2, 1995

		(1,000 pounds)									
		Philadelphia					Chicago				
Week ending		Calif-ornia	Florida	Mexico	Other	Total	Calif-ornia	Florida	Mexico	Other	Total
Jan.	6	0	320	60	20	400	0	440	90	0	530
	13	0	330	100	0	430	0	860	370	30	1,260
	20	0	280	190	10	480	0	420	1,500	0	1,920
	27	0	310	140	10	460	0	800	610	60	1,470
Feb.	3	0	380	150	10	540	0	430	430	0	860
	10	0	290	140	10	440	0	980	660	0	1,640
	17	0	380	0	150	530	0	630	0	640	1,270
	24	0	340	320	0	660	0	480	900	0	1,380
Mar.	3	0	310	410	0	720	0	900	1,060	0	1,960
	10	0	320	230	0	550	0	640	910	0	1,550
	17	0	250	100	0	350	0	170	480	0	650
	24	0	500	180	0	680	0	170	320	0	490
	31	0	530	130	0	660	0	220	250	0	470
Apr.	7	0	450	60	0	510	0	560	540	0	1,100
	17	0	470	60	0	530	0	610	550	0	1,160
	21	0	530	50	10	590	0	940	600	0	1,540
	28	0	590	30	10	630	0	800	160	20	980
May	5	0	700	40	10	750	0	890	250	0	1,140
	12	40	690	20	20	770	0	930	340	0	1,270
	19	130	600	0	0	730	190	920	330	10	1,450
	26	90	520	30	10	650	380	670	370	0	1,420
June	2	30	270	100	70	470	270	420	90	0	780

Note.--This table shows weekly arrivals at the wholesale terminal markets in selected cities. It should be noted that a significant share of shipments are sold directly from the shipping point and are not traded at the wholesale market. Nonetheless, the relative shares of product from the different sources sold at wholesale market are believed to be indicative of the overall trade for the region.

Source: Compiled from data of the Agricultural Marketing Services, U.S. Department of Agriculture.

Table 23

Fresh-market peppers: Weekly arrivals at Dallas and Los Angeles wholesale terminal markets, by markets and by sources, Jan 7-Dec. 30, 1994

		(1,000 pounds)									
Week ending	Dallas					Los Angeles					
	Calif-ornia	Florida	Mexico	Other	Total	Calif-ornia	Florida	Mexico	Other	Total	
Jan.	7	0	130	270	0	400	10	30	800	10	850
	14	0	170	120	0	290	0	60	650	10	720
	21	0	40	140	0	180	0	0	260	10	270
	28	0	70	170	0	240	0	30	800	10	840
Feb.	4	0	10	240	0	250	0	0	720	0	720
	11	0	50	220	0	270	0	50	800	10	860
	18	0	30	220	0	250	0	130	650	0	780
	25	0	0	180	0	180	0	0	720	10	730
Mar.	4	0	260	150	30	440	0	230	860	320	1,410
	11	0	100	180	0	280	0	0	1,180	0	1,180
	18	0	20	190	10	220	0	70	870	0	940
	25	0	20	150	0	170	0	0	1,570	0	1,570
Apr.	1	0	30	250	0	280	0	0	2,050	0	2,050
	8	0	30	150	0	180	0	790	4,400	10	5,200
	15	0	120	150	0	270	0	100	1,250	20	1,370
	22	0	230	50	10	290	0	240	820	20	1,080
	29	0	180	130	0	310	0	110	490	50	650
May	6	10	170	100	30	310	430	170	560	30	1,190
	13	100	150	110	10	370	650	100	800	30	1,580
	20	40	90	50	10	190	660	0	600	30	1,290
	27	90	80	80	40	290	510	0	620	50	1,180
June	3	60	40	40	90	230	590	0	420	10	1,020
	10	10	70	50	130	260	1,000	0	390	20	1,410
	17	40	40	20	170	270	990	0	270	20	1,280
	24	30	40	10	220	300	1,020	0	230	20	1,270
July	1	280	0	0	210	490	1,320	0	40	40	1,400
	8	210	90	0	170	470	1,360	0	0	50	1,410
	15	180	0	0	40	220	1,020	0	80	70	1,170
	22	320	0	0	60	380	1,130	0	30	20	1,180
	29	290	0	0	60	350	1,110	0	0	20	1,130
Aug.	5	270	0	0	70	340	870	0	0	40	910
	12	180	0	0	50	230	880	0	0	30	910
	19	0	0	0	0	0	0	0	0	0	0
	26	660	0	0	70	730	1,410	0	0	30	1,440
Sept.	2	210	0	0	60	270	960	0	0	10	970
	9	170	0	0	80	250	1,250	0	0	80	1,330
	16	250	0	0	90	340	1,470	0	0	50	1,520
	23	120	0	0	50	170	1,220	0	0	10	1,230
	30	290	0	0	60	350	1,100	0	0	20	1,120
Oct.	7	180	0	0	20	200	1,040	0	80	10	1,130
	14	200	0	0	90	290	1,030	0	40	10	1,080
	21	260	0	0	50	310	1,380	0	80	20	1,480
	28	170	20	0	110	300	950	0	20	10	980
Nov.	4	130	0	0	90	220	650	40	170	70	930
	11	320	10	0	90	420	390	40	160	80	670
	18	70	90	0	100	260	580	20	180	50	830
	25	0	80	0	150	230	310	100	490	10	910
Dec.	2	30	130	10	100	270	170	20	690	10	890
	9	0	60	10	140	210	20	150	860	10	1,040
	16	0	130	0	150	280	0	100	0	690	790
	23	0	120	70	20	210	0	30	700	10	740
	30	0	90	110	40	240	0	0	460	10	470

Note.--This table shows weekly arrivals at the wholesale terminal markets in selected cities. It should be noted that a significant share of shipments are sold directly from the shipping point and are not traded at the wholesale market. Nonetheless, the relative shares of product from the different sources sold at wholesale market are believed to be indicative of the overall trade for the region.

Source: Compiled from data of the Agricultural Marketing Services, U.S. Department of Agriculture.

Table 24

Fresh-market peppers: Weekly arrivals at Dallas and Los Angeles wholesale terminal markets, by markets and by sources, Jan. 6-June 2, 1995

		(1,000 pounds)									
Week ending	Dallas					Los Angeles					
	Calif-ornia	Florida	Mexico	Other	Total	Calif-ornia	Florida	Mexico	Other	Total	
Jan. 6	0	100	70	60	230	0	0	490	0	490	
13	0	30	270	0	300	0	0	760	0	760	
20	0	80	160	0	240	0	0	350	0	350	
27	0	110	320	0	430	0	0	630	0	630	
Feb. 3	0	30	200	0	230	0	0	660	0	660	
10	0	0	330	0	330	0	50	960	0	1,010	
17	0	50	0	370	420	0	140	0	910	1,050	
24	0	20	200	0	220	0	90	1,160	0	1,250	
Mar. 3	0	0	380	0	380	0	0	1,080	0	1,080	
10	0	40	290	0	330	0	10	940	0	950	
17	0	90	270	0	360	0	0	1,010	0	1,010	
24	0	150	220	0	370	0	0	560	0	560	
31	0	160	230	0	390	0	0	970	10	980	
Apr. 7	0	60	140	0	200	0	0	1,140	0	1,140	
17	0	80	110	0	190	0	90	760	20	870	
21	0	120	70	0	190	210	50	510	30	800	
28	0	180	100	10	290	250	180	340	20	790	
May 5	30	190	60	10	290	510	90	400	20	1,020	
12	40	200	40	10	290	900	50	500	0	1,450	
19	90	320	40	30	480	910	0	410	10	1,330	
26	90	230	40	0	360	670	0	480	0	1,150	
June 2	20	140	40	10	210	710	0	490	10	1,210	

Note.--This table shows weekly arrivals at the wholesale terminal markets in selected cities. It should be noted that a significant share of shipments are sold directly from the shipping point and are not traded at the wholesale market. Nonetheless, the relative shares of product from the different sources sold at wholesale market are believed to be indicative of the overall trade for the region.

Source: Compiled from data of the Agricultural Marketing Services, U.S. Department of Agriculture.

Table 25
 Fresh-market peppers: Monthly arrivals in 22 cities, by sources,
 1990-94

(100,000 pounds)					
Source/Month	1990	1991	1992	1993	1994
Florida:					
Jan.....	76	253	224	262	270
Feb.....	35	140	154	178	250
Mar.....	144	180	200	246	317
Apr.....	290	252	271	239	331
May.....	356	270	366	223	315
June.....	101	70	163	203	90
July.....	0	4	6	7	3
Aug.....	0	0	0	0	0
Sept.....	0	0	0	0	1
Oct.....	20	43	32	33	34
Nov.....	127	142	156	152	177
Dec.....	174	239	270	241	265
Total.....	1,323	1,593	1,842	1,784	2,053
California:					
Jan.....	0	1	0	0	1
Feb.....	0	0	0	0	1
Mar.....	0	0	0	0	0
Apr.....	2	0	2	2	0
May.....	48	50	63	78	73
June.....	107	104	151	132	161
July.....	138	134	187	147	157
Aug.....	154	135	167	163	132
Sept.....	145	202	197	184	168
Oct.....	215	269	226	219	189
Nov.....	86	126	112	98	90
Dec.....	8	15	7	8	6
Total.....	903	1,036	1,112	1,031	978
All other U.S.:					
Jan.....	0	0	10	0	0
Feb.....	0	0	0	0	0
Mar.....	0	0	0	0	0
Apr.....	0	0	0	0	0
May.....	6	15	1	1	6
June.....	124	176	118	96	197
July.....	164	220	207	243	219
Aug.....	164	169	164	248	239
Sept.....	172	133	200	187	201
Oct.....	125	102	103	96	108
Nov.....	79	66	92	66	87
Dec.....	34	52	34	20	34
Total.....	868	933	929	957	1,091
Imports:					
Jan.....	214	150	190	170	143
Feb.....	190	180	177	182	152
Mar.....	163	172	150	224	212
Apr.....	74	93	122	113	132
May.....	21	40	77	54	89
June.....	15	25	25	27	49
July.....	12	13	17	20	24
Aug.....	9	11	12	22	25
Sept.....	8	15	12	25	23
Oct.....	10	12	12	26	22
Nov.....	22	32	13	57	42
Dec.....	83	81	119	87	113
Total.....	821	824	926	1,007	1,026
Total Arrivals:					
Jan.....	290	404	424	432	414
Feb.....	225	320	331	360	403
Mar.....	307	352	350	470	529
Apr.....	366	345	395	354	463
May.....	431	375	507	356	483
June.....	347	375	457	458	497
July.....	314	371	417	417	403
Aug.....	327	315	343	433	396
Sept.....	325	350	409	396	393
Oct.....	370	426	373	374	353
Nov.....	314	366	373	373	396
Dec.....	299	387	430	356	418
Total.....	3,915	4,386	4,809	4,779	5,148

Source: Compiled from data of the Agricultural Marketing Service, U.S. Department of Agriculture.

Table 26
 Fresh market peppers: Percentage of monthly arrivals in 22 cities,
 by sources, 1990-94

(Percent)						
Source/Month	1990	1991	1992	1993	1994	1990-94 average
Florida:						
Jan.....	26.2	62.6	52.8	60.6	65.2	55.2
Feb.....	15.6	43.8	46.5	49.4	62.0	46.2
Mar.....	46.9	51.1	57.1	52.3	59.9	54.1
Apr.....	79.2	73.0	68.6	67.5	71.5	71.9
May.....	82.6	72.0	72.2	62.6	65.2	71.1
June.....	29.1	18.7	35.7	44.3	18.1	29.4
July.....	0.0	1.1	1.4	1.7	0.7	1.0
Aug.....	0.0	0.0	0.0	0.0	0.0	0.0
Sept.....	0.0	0.0	0.0	0.0	0.3	0.1
Oct.....	5.4	10.1	8.6	8.8	9.6	8.5
Nov.....	40.4	38.8	41.8	40.8	44.7	41.4
Dec.....	58.2	61.8	62.8	67.7	63.4	62.9
Average.....	33.8	36.3	38.3	37.3	39.9	37.3
California:						
Jan.....	0.0	0.2	0.0	0.0	0.2	0.1
Feb.....	0.0	0.0	0.0	0.0	0.2	0.1
Mar.....	0.0	0.0	0.0	0.0	0.0	0.0
Apr.....	0.5	0.0	0.5	0.6	0.0	0.3
May.....	11.1	13.3	12.4	21.9	15.1	14.5
June.....	30.8	27.7	33.0	28.8	32.4	30.7
July.....	43.9	36.1	44.8	35.3	39.0	39.7
Aug.....	47.1	42.9	48.7	37.6	33.3	41.4
Sept.....	44.6	57.7	48.2	46.5	42.7	47.8
Oct.....	58.1	63.1	60.6	58.6	53.5	59.0
Nov.....	27.4	34.4	30.0	26.3	22.7	28.1
Dec.....	2.7	3.9	1.6	2.2	1.4	2.3
Average.....	23.1	23.6	23.1	21.6	19.0	22.0
All other U.S.:						
Jan.....	0.0	0.0	2.4	0.0	0.0	0.5
Feb.....	0.0	0.0	0.0	0.0	0.0	0.0
Mar.....	0.0	0.0	0.0	0.0	0.0	0.0
Apr.....	0.0	0.0	0.0	0.0	0.0	0.0
May.....	1.4	4.0	0.2	0.3	1.2	1.3
June.....	35.7	46.9	25.8	21.0	39.6	33.3
July.....	52.2	59.3	49.6	58.3	54.3	54.8
Aug.....	50.2	53.7	47.8	57.3	60.4	54.2
Sept.....	52.9	38.0	48.9	47.2	51.1	47.7
Oct.....	33.8	23.9	27.6	25.7	30.6	28.2
Nov.....	25.2	18.0	24.7	17.7	22.0	21.4
Dec.....	11.4	13.4	7.9	5.6	8.1	9.2
Average.....	22.2	21.3	19.3	20.0	21.2	20.7
Imports:						
Jan.....	73.8	37.1	44.8	39.4	34.5	44.1
Feb.....	84.4	56.3	53.5	50.6	37.7	53.8
Mar.....	53.1	48.9	42.9	47.7	40.1	45.9
Apr.....	20.2	27.0	30.9	31.9	28.5	27.8
May.....	4.9	10.7	15.2	15.2	18.4	13.1
June.....	4.3	6.7	5.5	5.9	9.9	6.6
July.....	3.8	3.5	4.1	4.8	6.0	4.5
Aug.....	2.8	3.5	3.5	5.1	6.3	4.4
Sept.....	2.5	4.3	2.9	6.3	5.9	4.4
Oct.....	2.7	2.8	3.2	7.0	6.2	4.3
Nov.....	7.0	8.7	3.5	15.3	10.6	9.1
Dec.....	27.8	20.9	27.7	24.4	27.0	25.6
Average.....	21.0	18.8	19.3	21.1	19.9	20.0

Source: Compiled from data of the Agricultural Marketing Service, U.S. Department of Agriculture.

PRICES

Table 27

Fresh-market peppers: Tuesday F.O.B. shipping prices, Florida,
Nov. 29-May 30, 1989/90 to 1994/95, large green bell peppers, 1-1/9 bushel
cartons

(Dollars)

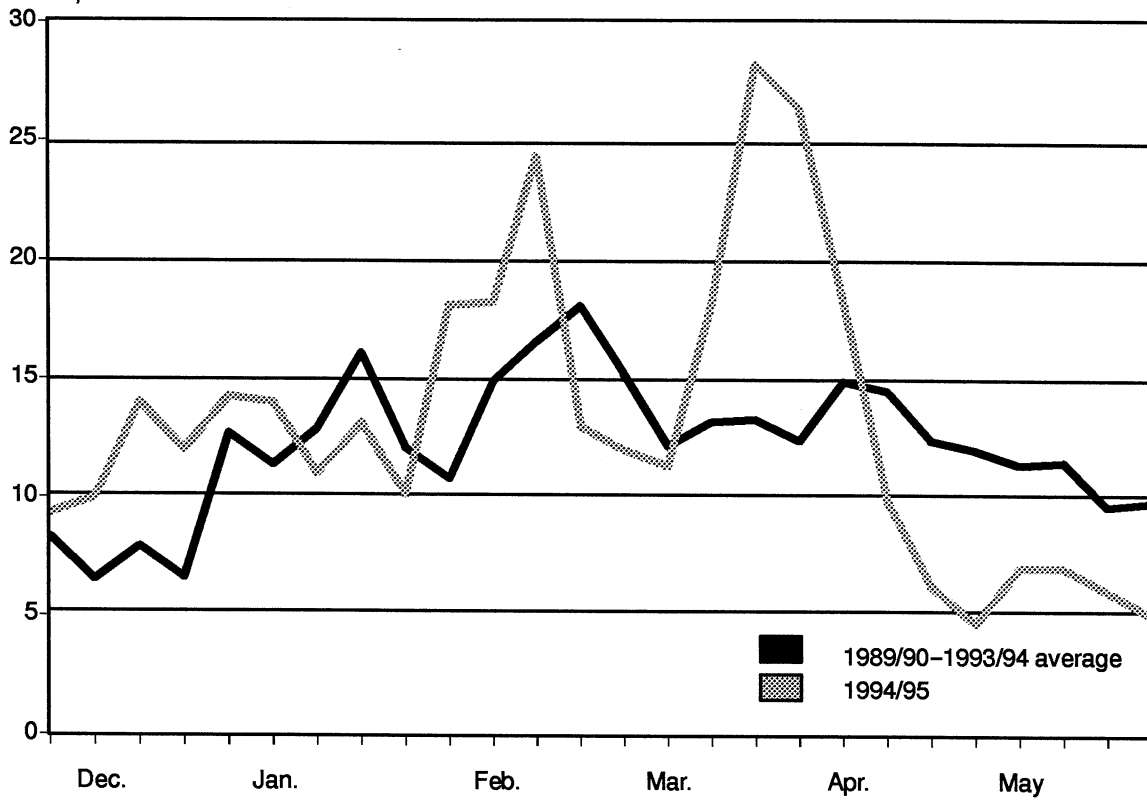
Date	1989/90	1990/91	1991/92	1992/93	1993/94	1989/90- 1993/94 average	1994/95
Nov. 29.....	8.13	12.00	5.00	8.50	8.00	8.33	9.33
Dec. 06.....	6.00	6.50	5.00	7.00	8.00	6.50	10.00
13.....	6.00	5.50	5.00	10.13	13.00	7.93	14.00
20.....	5.50	6.00	4.50	8.00	9.00	6.60	12.00
27.....	20.00	10.00	8.50	7.00	18.25	12.75	14.25
Jan. 3.....	24.00	10.00	8.00	7.00	8.00	11.40	14.00
10.....	26.00	10.50	7.50	10.50	10.00	12.90	11.00
17.....	28.00	7.50	18.00	17.25	10.00	16.15	13.13
24.....	20.00	7.50	18.00	7.50	7.65	12.13	10.13
31.....	20.00	5.50	12.00	10.00	6.50	10.80	18.13
Feb. 7.....	28.00	7.00	23.00	10.00	6.50	14.90	18.25
14.....	28.00	13.00	23.00	14.00	5.00	16.60	24.35
21.....	42.50	16.00	15.50	10.00	6.65	18.13	13.00
28.....	30.00	9.50	17.00	12.13	7.65	15.26	12.00
Mar. 7.....	15.50	10.00	17.00	8.00	10.65	12.23	11.33
14.....	8.00	10.00	22.50	12.00	13.65	13.23	18.18
21.....	6.50	16.00	22.50	12.00	9.65	13.33	28.18
28.....	6.50	19.00	21.00	8.00	7.65	12.43	26.35
Apr. 4.....	6.00	22.00	21.00	17.13	8.65	14.96	18.25
11.....	6.00	19.00	16.00	21.00	10.65	14.53	9.85
18.....	5.00	16.00	9.00	25.50	6.65	12.43	6.25
25.....	4.75	12.00	5.00	31.13	7.15	12.01	4.68
May 2.....	4.75	10.00	5.00	23.00	14.33	11.42	7.00
9.....	7.00	18.00	6.63	18.00	8.00	11.53	7.00
16.....	6.00	16.00	5.00	15.00	6.00	9.60	6.00
23.....	4.50	20.00	6.00	13.00	5.63	9.83	5.00
30.....	6.00	19.00	7.13	9.00	8.00	9.83	7.50

Note.--The date is for the current 1994/95 year. The data for the 1989/90 through 1993/94 seasons represent the closest corresponding Tuesdays to that date.

Source: Compiled from data of the Agricultural Marketing Service, U.S. Department of Agriculture.

Figure 5
Fresh-market peppers: Tuesday F.O.B. shipping prices, Florida, large green bell peppers,
Nov. 29-May 30, 1989/90-1993/94 5-year average and 1994/95

Dollars per carton



Source: Compiled from data of the Agriculture Marketing Service, U.S. Department of Agriculture.

Table 28

Fresh-market peppers: Tuesday F.O.B. shipping prices, Nogales, AZ,
Dec. 13-Apr. 18, 1989/90 to 1994/95, large green bell peppers, 1-1/9 bushel
cartons

(Dollars)

Date	1989/90	1990/91	1991/92	1992/93	1993/94	1989/90- 1993/94 average	1994/95
Dec. 13.....	7.50	7.50	5.00	8.50	17.15	9.13	17.15
20.....	(¹)	7.00	(¹)	6.00	9.15	7.38	12.50
27.....	12.00	² 7.50	(¹)	5.00	10.15	8.66	15.50
Jan. 3.....	20.00	(¹)	5.50	6.00	9.15	10.16	14.50
10.....	22.00	11.00	6.50	³ 9.50	9.65	11.73	12.50
17.....	20.00	6.00	² 17.00	8.00	10.65	12.33	10.35
24.....	14.00	7.50	² 11.00	7.00	9.65	9.83	9.35
31.....	² 19.00	4.50	8.00	7.50	7.65	9.33	15.85
Feb. 7.....	22.00	7.00	³ 17.00	9.50	6.65	12.43	21.00
14.....	23.00	15.00	22.00	13.00	6.15	15.83	23.50
21.....	30.00	16.00	14.00	10.00	8.65	15.73	9.50
28.....	27.50	9.00	16.50	11.00	8.15	14.43	7.65
Mar. 7.....	16.00	11.00	² 19.00	8.50	10.15	12.93	12.65
14.....	9.00	10.00	20.00	13.00	7.65	11.93	17.00
21.....	² 8.00	14.00	27.00	12.50	7.15	13.73	26.50
28.....	9.00	20.00	22.00	7.50	6.65	13.03	23.50
Apr. 4.....	² 7.00	21.00	³ 22.00	17.50	7.15	14.93	14.65
11.....	7.50	(¹)	23.00	³ 22.00	11.15	15.91	11.50
18.....	² 7.50	(¹)	13.00	22.50	7.65	12.66	8.35

¹ Supplies were insufficient to quote prices.

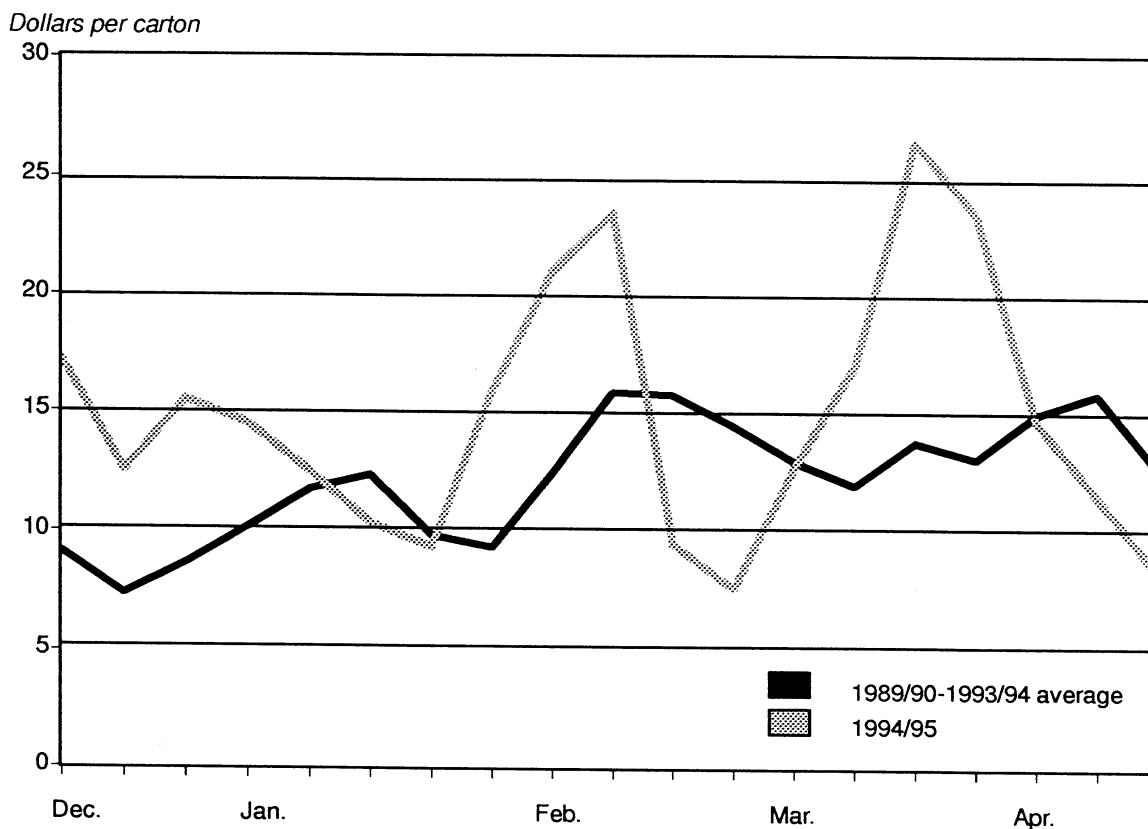
² Wednesday price.

³ Monday price.

Note.--The date is for the current 1994/95 year. The data for the 1989/90 through 1993/94 seasons represent the closest corresponding Tuesdays to that date.

Source: Compiled from data of the Agricultural Marketing Service, U.S. Department of Agriculture.

Figure 6
Fresh-market peppers: Tuesday F.O.B. shipping prices, Nogales, AZ, large green bell peppers,
Dec. 13-Apr. 18, 1989/90-1993/94 5-year average and 1994/95



Source: Compiled from data of the Agriculture Marketing Service, U.S. Department of Agriculture.

Table 29

Fresh-market peppers: Tuesday F.O.B. shipping prices, Nogales, AZ,
Dec. 13-Apr. 18, 1989/90 to 1994/95, medium green bell peppers, 1-1/9 bushel
cartons

(Dollars)

Date	1989/90	1990/91	1991/92	1992/93	1993/94	1989/90- 1993/94 average	1994/95
Dec. 13.....	6.00	5.50	3.50	7.00	14.65	7.33	16.00
20.....	(¹)	5.50	(¹)	5.00	7.15	5.88	12.50
27.....	10.00	² 5.50	(¹)	4.00	8.15	6.91	13.85
Jan. 3.....	18.00	(¹)	4.50	5.00	6.65	8.54	13.50
10.....	20.00	10.00	5.50	³ 7.50	8.15	10.23	11.00
17.....	18.00	5.00	² 15.00	6.50	8.15	10.53	9.50
24.....	12.00	6.00	² 9.00	5.50	8.15	8.13	8.35
31.....	17.00	3.50	6.50	5.50	6.65	7.83	13.85
Feb. 7.....	20.00	5.50	³ 15.00	7.00	6.15	10.73	19.00
14.....	21.00	13.00	20.00	11.00	5.15	14.03	20.15
21.....	28.00	14.00	12.00	8.00	7.65	13.93	7.50
28.....	23.50	7.00	13.00	9.50	6.15	11.83	6.65
Mar. 7.....	12.00	7.00	² 17.00	6.00	8.65	10.13	10.50
14.....	6.50	6.50	16.50	11.00	6.15	9.33	15.50
21.....	² 5.50	10.00	21.00	9.50	6.15	10.43	23.00
28.....	7.00	16.00	15.00	5.50	5.65	9.83	19.50
Apr. 4.....	² 6.00	17.50	³ 14.00	14.00	6.15	11.53	11.50
11.....	6.00	(¹)	17.00	³ 15.00	9.15	11.79	10.00
18.....	² 6.50	(¹)	11.00	15.00	6.15	9.66	7.35

¹ Supplies were insufficient to quote prices.

² Wednesday price.

³ Monday price.

Note.--The date is for the current 1994/95 year. The data for the 1989/90 through 1993/94 seasons represent the closest corresponding Tuesdays to that date.

Source: Compiled from data of the Agricultural Marketing Service, U.S. Department of Agriculture.

Table 30
 Fresh-market peppers: Average retail prices, by overall U.S. average and 3 regions' averages¹, Jan. 1990-
 Mar. 1995

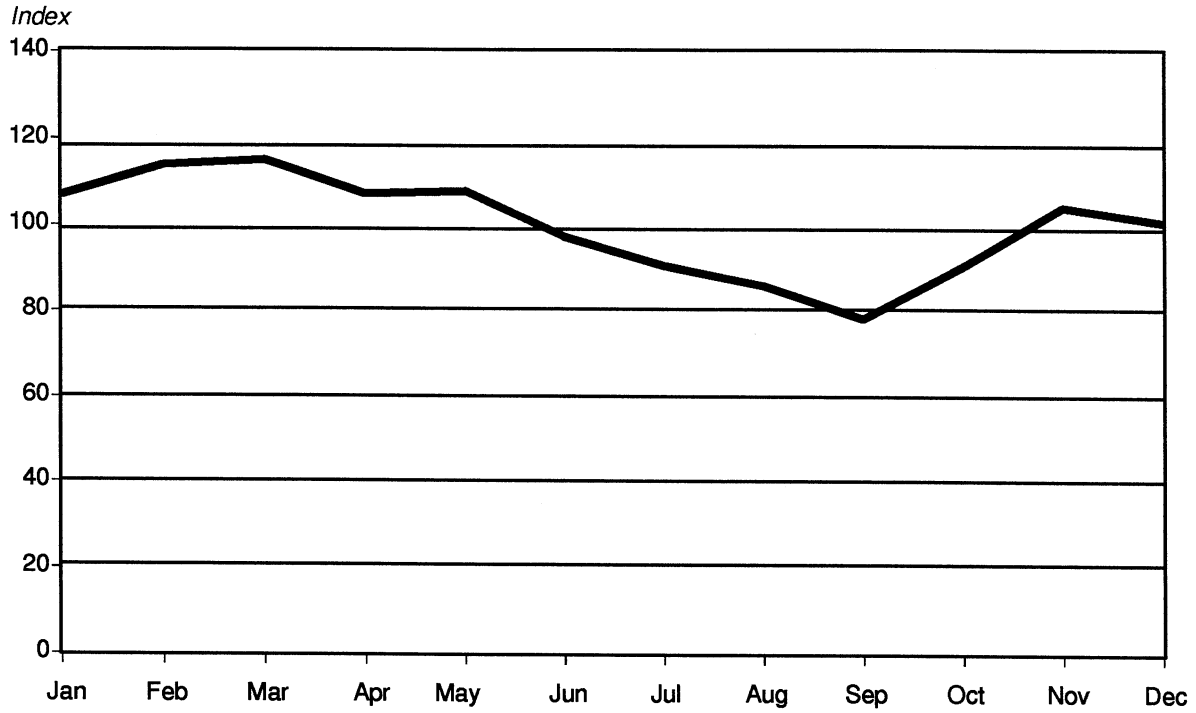
(Dollars per pound)				
Year/Month	U.S.	Northeast	North Central	South
1990:				
Jan	1.551	1.447	1.625	(2)
Feb	1.776	1.734	1.872	(2)
Mar	1.595	(2)	1.779	(2)
Apr	.893	(2)	.979	(2)
May	.782	(2)	.852	(2)
June	.864	(2)	.910	(2)
July	1.021	(2)	1.034	(2)
Aug	.990	(2)	1.042	(2)
Sept	.704	(2)	.739	(2)
Oct	(2)	(2)	.950	(2)
Nov	(2)	(2)	1.394	(2)
Dec	(2)	(2)	1.372	(2)
1991:				
Jan	1.101	(2)	1.104	(2)
Feb	1.071	(2)	1.077	(2)
Mar	1.113	(2)	1.219	(2)
Apr	1.390	(2)	1.641	(2)
May	1.415	(2)	1.520	(2)
June	1.410	(2)	1.549	(2)
July	1.153	(2)	1.261	(2)
Aug	1.088	(2)	1.059	(2)
Sept	.929	(2)	.965	(2)
Oct	.908	(2)	.915	(2)
Nov	.926	(2)	.965	(2)
Dec	.824	(2)	.794	0.968
1992:				
Jan	.954	(2)	1.059	.941
Feb	1.383	(2)	1.375	1.593
Mar	1.541	(2)	(2)	1.801
Apr	1.312	(2)	(2)	1.858
May	.948	(2)	(2)	1.096
June	.899	(2)	(2)	1.024
July	.861	(2)	(2)	1.042
Aug	.790	(2)	(2)	1.077
Sept	.855	(2)	(2)	1.018
Oct	.948	(2)	(2)	1.086
Nov	1.120	(2)	(2)	1.374
Dec	1.148	(2)	(2)	1.238
1993:				
Jan	1.068	(2)	(2)	1.133
Feb	1.010	(2)	(2)	.994
Mar	1.117	(2)	(2)	1.137
Apr	1.342	(2)	(2)	1.272
May	1.754	(2)	(2)	2.101
June	1.207	(2)	(2)	1.302
July	.970	(2)	(2)	1.030
Aug	.922	(2)	(2)	1.092
Sept	.930	(2)	(2)	1.033
Oct	1.048	(2)	(2)	1.069
Nov	1.226	(2)	(2)	1.222
Dec	1.257	(2)	(2)	1.390
1994:				
Jan	1.281	(2)	(2)	1.421
Feb	1.091	(2)	(2)	1.064
Mar	1.035	(2)	(2)	1.076
Apr	1.034	(2)	(2)	1.080
May	1.102	(2)	(2)	1.263
June	1.041	(2)	(2)	(2)
July	1.048	(2)	(2)	(2)
Aug	.993	(2)	(2)	(2)
Sept	.938	(2)	(2)	(2)
Oct	1.136	(2)	(2)	(2)
Nov	1.369	(2)	(2)	(2)
Dec	1.521	(2)	(2)	(2)
1995:				
Jan	1.564	(2)	(2)	(2)
Feb	1.634	(2)	(2)	(2)
Mar	1.562	(2)	(2)	(2)
Apr	1.723	(2)	(2)	(2)
May	1.180	(2)	(2)	(2)

¹ Data for the West region have not been reported since 1988.

² Data are not available.

Source: Compiled from official statistics of the U.S. Bureau of Labor Statistics.

Figure 7
Fresh-market peppers: Seasonal index¹ of U.S. average retail prices, 1990-1994



¹ The seasonal index is calculated as the average price for the month divided by the average cost for the 1990 through 1994 period. For instance, the average January price is 7 percent higher than the average price for the overall period.

Source: Prepared by the staff of the U.S. International Trade Commission based on data reported by the U.S. Department of Commerce.