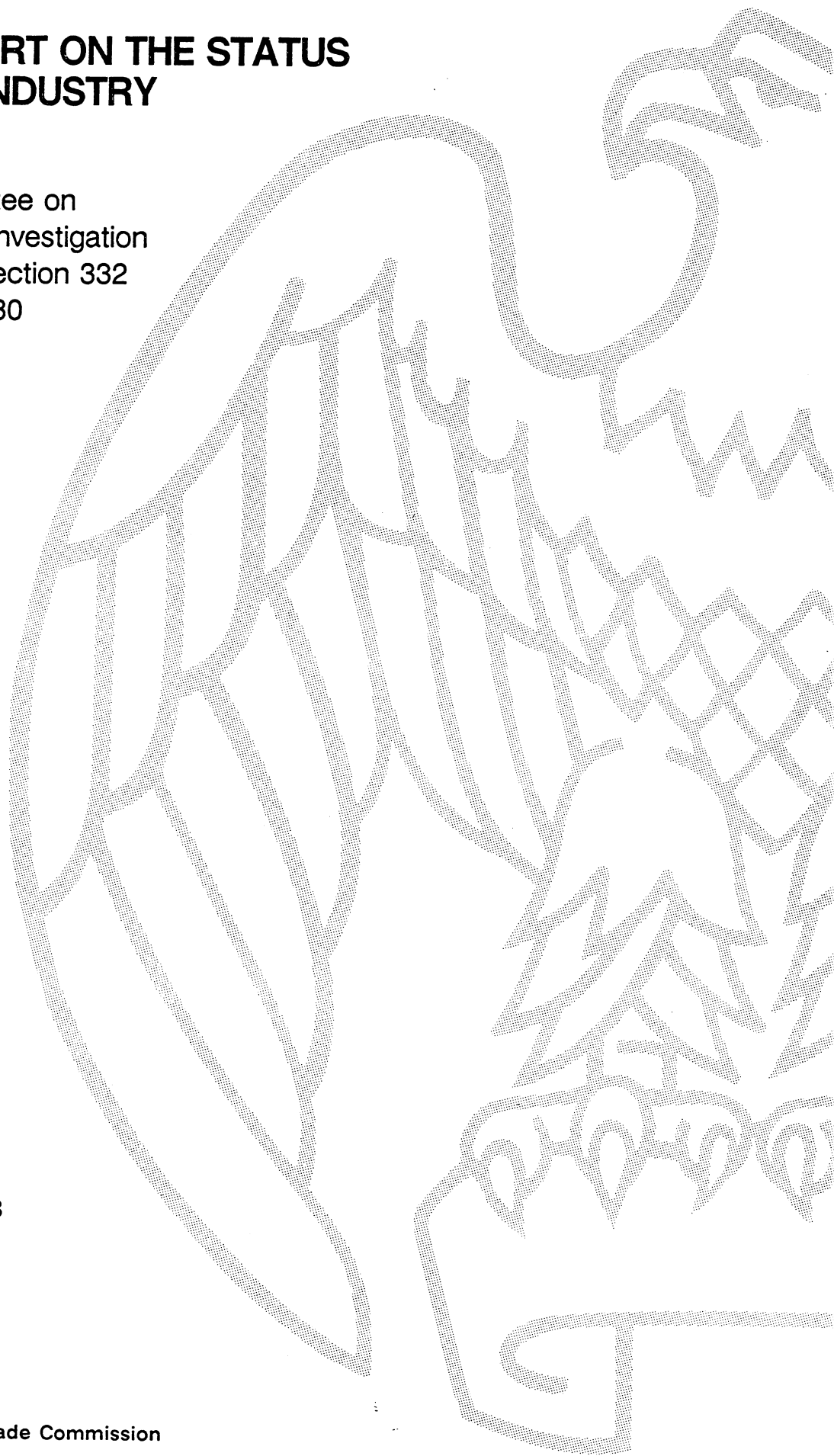


MONTHLY REPORT ON THE STATUS OF THE STEEL INDUSTRY

Report to the Committee on
Ways and Means on Investigation
No. 332-226 Under Section 332
of the Tariff Act of 1930



USITC PUBLICATION 2298

JULY 1990

United States International Trade Commission
Washington, DC 20436

UNITED STATES INTERNATIONAL TRADE COMMISSION

COMMISSIONERS

Anne E. Brunsdale, Acting Chairman

Seeley G. Lodwick

David B. Rohr

Don E. Newquist

Office of Industries
Robert Rogowsky, Director

This report was prepared principally by

Robert Mascola

Anna Mae Toth

Minerals and Metals Division

Address all communications to
Kenneth R. Mason, Secretary to the Commission
United States International Trade Commission
Washington, DC 20436

Introduction

The Japanese steel industry is the largest in the Western world. It is also one of the world's most technologically advanced. Having grown rapidly after World War II when the industry was relatively small, the steel industry became world competitive during the 1960s and 1970s, when many of its facilities were constructed. The capacity was never fully utilized, however, as growth in steel demand did not meet expectations. This situation deteriorated in the mid-1980s due to a number of unfavorable market conditions, including depressed global steel demand, a strengthening of the yen, trade restrictions in overseas markets, and the emergence of new competitors from Korea, Brazil and other developing nations. As a result, in fiscal year 1986 the steel operations of major Japanese producers lost several billion dollars.

In response, the industry implemented aggressive restructuring plans to adjust to these conditions. As a result, in the past couple of years, operating costs and debt burden have fallen, capacity utilization has climbed, the reliance on exports has diminished, and facilities have been upgraded. Industry profits reached ¥340 billion (\$2.3 billion) in 1987², and continued to climb in 1988, though this in large part is due to the recovery of global steel demand and more importantly, the expansion of domestic demand. It is not clear how long the current performance of the industry can be maintained. However, the industry does appear to be taking advantage of its current position to strengthen its competitive advantage in advanced technology.

Restructuring Efforts

To strengthen its competitive position in the world, the Japanese steel industry has simultaneously rationalized and modernized. The rationalization plan has focused on cost and capacity reduction: several mills and blast furnaces were shut down (reducing effective steelmaking capacity by approximately 30 percent to about 110 million metric tons); the labor force was cut back by about 30 percent (largely through transfers of surplus human resources to other businesses); more efficient processes were developed (to reduce energy and raw materials needs); and imports of raw materials were increased (as a substitute for more costly, domestically-produced materials). According to one industry analyst, such actions have enabled the Japanese industry to produce cold-rolled coil for less than the Korean industry (\$483/metric ton compared to \$491/metric ton). U.S. producers' cost is

¹ Much of the discussion on the Japanese steel industry is based on recent interviews between staff members of the International Trade Commission and representatives of the Japanese steel industry both in Japan and in the United States.

² The Japan Iron and Steel Federation (JISF), The Iron and Steel Industry of Japan 1989, p. 22. Financial figures are for 45 JISF member companies.

estimated to be slightly less (\$478/metric ton).³

The difficulties that confronted the Japanese steel industry in the mid-1980s did not come at the expense of modernization. As the market improved, increased resources were devoted to facility upgrades. Planned capital investment for fiscal year 1989 reached ¥627 billion (\$4.5 billion), a 32 percent increase over actual spending in the previous year. In the United States, capital expenditures for approximately the same time period totaled \$2.5 billion.⁴ Investment has focused the development of new processes to cut operating costs and new facilities to increase value-added capabilities. Since 1988, the installation of advanced surface-treating equipment, such as electrogalvanizing, continuous galvanizing and multiple purpose coating lines, has been one of the main focuses of the industry's investment program.

Trade

Increased domestic demand, the rising value of the yen, and capacity limitations resulted in Japanese steel producers shipping a greater percentage of their finished products to the domestic market where they could obtain higher prices than possible in many traditional export markets. These factors also made Japan a favorable market for foreign steelmakers. As a result, Japan's steel trade surplus fell 56 percent from 1985 to 1989 (table 1).

Table 1
Japanese steel imports, exports and trade balance, 1985-1989
(millions of metric tons)

	<u>Imports</u>	<u>Exports</u>	<u>Trade balance</u>
1985	2.9	32.2	29.3
1986	3.4	29.2	25.8
1987	5.0	25.6	20.6
1988	6.9	23.6	16.7
1989	7.3	20.1	12.8

Source: Japan Steel Information Center

Steel exports declined for the fifth consecutive year in 1989, dropping to 20.1 million metric tons, the lowest level recorded since 1972. Although China remains Japan's largest export market, shipments there have fallen 64 percent since 1985. Exports to the United States, Japan's second largest export market, fell 35 percent in the same period. Korea, Taiwan, the Soviet Union, and the Middle East have also seen a decline in Japanese steel exports.

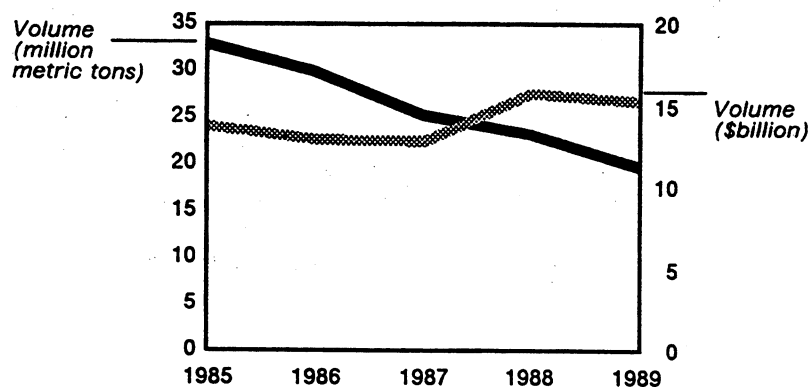
³ Donald F. Barnett, "Competitive Costs with new Technologies: The Mouse that Roared," a paper presented at Steel Survival Strategies conference, June 27, 1990, Table 1.

⁴ U.S. International Trade Commission, Annual Survey Concerning Competitive Conditions in the Steel Industry and Industry Efforts to Adjust and Modernize, Publication No. 2226, October 1989, p. 10.

Only Southeast Asia, and specifically Thailand, stands out as a region of export growth for Japanese steel during this period. Shipments to the region represented nearly one-fifth of total steel exports by 1989.

The decline in export volume presents an incomplete picture, however. As the Japanese industry underwent reconstruction, exports of high-value added products such as non-zinc coated sheets, tinplate and specialty steel products were on the rise, while most others were declining. This, combined with strong market conditions throughout the Pacific Rim, enabled Japanese companies to command higher prices for their exports. As a result, between 1985 and 1989, while export tonnage decreased 40 percent, the value of exports (in dollar terms) actually rose 10 percent (figure 1). (In yen terms, there was a 36 percent decline in the same time period).

Figure 1
Japanese exports by volume and value, 1985-89



The same conditions that made exports unfavorable for Japanese steel companies made imports into Japan attractive. Imports reached a record high in 1987 and have continued to increase since then, although the rate of increase in 1989 slowed. Imports from Korea alone, which represent 40-45 percent of total imports, more than doubled from 1986 to 1989, reaching 3.3 million metric tons. With 7.3 million tons of total imports in 1989, Japan's import penetration ratio reached 8 percent, which is still relatively low compared to other major steel-producing nations, such as the United States (18 percent). As fast as Japanese import volume has been rising, the value of those imports has grown even faster. This appears to be less a function of the product mix entering Japan than the high prices prevailing in Japan. Relatively low-value added semi-finished, plate and hot-rolled sheet continue to comprise over 70 percent of imports.⁵

Trade and Investment in the United States

The Japanese have for many years been the single largest foreign source of steel to the U.S. market; significant changes have and are occurring, however,

⁵ The Japan Steel Information Center.

with respect to trade and investment.

With respect to trade, trends in Japanese trade with the United States in recent years have mirrored those in Japanese trade overall. Imports of U.S. steel grew from under 35,000 metric tons in 1986 to 674,000 tons in 1989. They made up 8 percent of total imports into Japan in 1989, compared to less than 1 percent in 1986. Japanese exports to the United States dropped nearly 40 percent from 1985-89 (to 3.4 million metric tons).

With respect to investment, Japanese producers found the U.S. market particularly favorable because of the opportunities it presented. U.S. steel producers needed both capital and technology, which the Japanese could provide. In return, Japanese producers obtained ownership positions in a large, and potentially lucrative market, where they would be better able to supply and service important Japanese customers, primarily in the auto industry, who were setting up operations in the United States. Indeed, Japanese investment in the United States includes seven new galvanizing and coating line projects, with a current combined annual capacity of 1 million metric tons. (Current U.S. galvanizing capacity is about 14 million metric tons⁶). Galvanizing capacity at lines involving Japanese partners is expected to reach over 3 million metric tons by 1992. As shown in table 2 below, most joint ventures have been between large integrated Japanese and U.S. mills. Of these, some involve direct investment in the U.S. company (e.g. National), whereas other ventures are confined to the development of new operations (e.g. L-S Electrogalvanizing). Of the joint ventures made since 1984, only one, Nucor-Yamato, is not directed towards Japanese auto manufacturers.

Table 2

Japanese investment in the U.S. steel industry (excluding steel processors and service centers)

<u>Japanese company</u>	<u>Partner</u>	<u>Joint company</u>	<u>Operation</u>	<u>Percent Investment</u>
Nippon Steel	Inland	I/N Tek	Cold-rolling	40
		I/N Kote	Galvanizing	50
NKK	National Intergroup	National Steel	Integrated	70
		CVRD	Rolling	50
Kawasaki Steel	Armco	California Steel Ind.	Rolling	50
		Armco Steel	Integrated	45
Sumitomo Metal Ind.	LTV Corp.	L-S Electro-galvanizing	Electrogalvanizing	40
		L-S II Electrogalvan'g	Electrogalvanizing	50
Kobe Steel	USX Corp.	USS Loraine	Integrated	50
		Aztec Coating	Hot-dip galvanizing	50
Nisshin Steel	Wheeling-Pittsburgh	Wheeling-Nisshin	Coating line	67

⁶ Barnett, table 5A.

Nisshin Steel	Wheeling- Pittsburgh	Wheeling- Nisshin	Integrated	10
Yamato Kogyo	Nucor	Nucor- Yamato	Structural	49
Ataka/Kyoei facility		Auburn	Bars	100
Tokyo Steel/ Mitsui Trading	Ameron	TAMCO	Bars	25/25

Source: U.S. International Trade Commission. Annual Survey Concerning Competitive Conditions in the Steel Industry and Industry Efforts to Adjust and Modernize. Publication No. 2226. October, 1989, Appendix M.

In addition to these joint ventures, in the past several years Japanese steel companies have provided technical assistance to several companies, including those with which they did not form a joint venture (e.g. Bethlehem, Weirton).

Outlook

The Japanese steel industry appears well-positioned to maintain its position as the world's premier maker of high quality steel products, at least in the short term. Its competitive position will be increasingly tested however, by producers in countries like Korea and Taiwan, which are themselves seeking to market more sophisticated steel products.⁷

Continued success for the Japanese steel industry appears to depend primarily on three factors. The first two, technological leadership and cost competitiveness, have been the focus of the industry's recent restructuring efforts, which have been largely successful. Comparatively high levels of research and development are likely to help the industry continue to meet these objectives in the future. Available data indicate that Japan spends more on R&D as a percent of net sales than any other steel-producing nation. R&D spending in Japan totaled \$1.7 billion in FY1988 (representing 2 percent of net sales),⁸ whereas U.S. R&D levels for the equivalent time period are estimated to be less than \$200 million, (representing less than a half of a percent of net sales).⁹

⁷ With respect to Korea, the steel industry presents a considerable challenge for the Japanese. The industry clearly has intentions of shifting production and exports towards more high-value added products. To aid in its long-term objectives in becoming a world class producer of high quality steel products, in 1986 Korea's POSCO set up the Pohang Institute of Science and Technology (POSTECH), a university specializing in engineering. Researchers at POSTECH work closely with those at POSCO's own Research Institute of Industrial Science and Technology. (See U.S. International Trade Commission, U.S. Global Competitiveness: Steel Sheet and Strip Industry, Publication No. 2050, January 1988, p. 10-15.)

⁸ Japan Steel Information Center.

⁹ U.S. International Trade Commission, Annual Survey, October 1898, p. 12.

The third factor on which long-term success of the industry depends is the continued development of new markets for technologically sophisticated steel products. To the extent the growth opportunities in these markets are limited, the advantage gained by the industry's strength in high technology will also be limited. In apparent recognition of this limitation, each of the major Japanese companies plans to diversify a significant portion of its business into other areas as a hedge against this possibility. By the year 2000, steel is targeted to represent only between 27 and 65 percent of total business (table 3).

Table 3
Diversification plan of major Japanese steel companies

Company	Steel division sales-FY87 billion yen	Share of total sales (percent)	Target steel share (percent)	Target year (FY)
Nippon	1,937.2	90	<u>1</u> / 60	1995
Sumitomo	838.8	92	65	1995
NKK	815.0	78	50	2000
Kawasaki	755.9	81	59	2000
Kobe	362.2	37	27	1995
Nisshin	359.6	99	<u>2</u> /	<u>2</u> /

1/ Includes other materials

2/ Not available

Source: Nomura Research Institute, Ltd.

Areas into which the companies are planning to diversify include engineering, electronics, biotechnology, social and land development, and new materials. Recently, Nippon Steel and two other major steel companies reportedly announced that they will begin making plastic sheets for cars.¹⁰

Robert Mascola
252-1428

¹⁰ Metal Bulletin, May 7, 1990, p. 5.

Monthly Review:
Selected Industry and Trade Topics

Subject Index

	<u>USITC</u>	<u>Date</u>
	<u>Publication</u>	
Specialty steel products-----	2088	6/88
Pipe and tube products-----	2092	7/88
Steel pricing: domestic and international developments-----	2102	8/88
Wire rod, wire and wire products-----	2114	9/88
U.S. trade in tinplate-----	2130	10/88
Steel rebar: domestic market and trade-----	2134	11/88
Heavy structural shapes-----	2141	12/88
Imports by customs areas-----	2146	1/89
Wire rope and strand-----	2153	2/89
Annual summary of trade with VRA and non-VRA countries; product trade assessment-----	2162	3/89
Imports of pipe and tube products-----	2175	4/89
Specialty steel imports-----	2184	5/89
Imports of semifinished steel-----	2195	6/89
Wire rod-----	2202	7/89
Steel prices-----	2134	8/89
Special quality steel bars-----	2215	9/89
Specialty steel-----	2227	10/89
Galvanized sheet and strip-----	2230	11/89
Structural steel shapes and units-----	2241	12/89
VRAs: 1989 to 1992-----	2248	1/90
Developments in the Korean Steel Industry-----	2258	2/90
Developments in the East European Steel Industry---	2262	3/90
Developments in the African Steel Industry-----	2270	4/90
Developments in the Soviet Steel Industry-----	2283	5/90
Developments in the French Steel Industry-----	2290	6/90
Developments in the Japanese Steel Industry-----	2298	7/90

U.S. STEEL INDUSTRY HIGHLIGHTS

Figure 1
U.S. apparent steel consumption
1,000 short tons

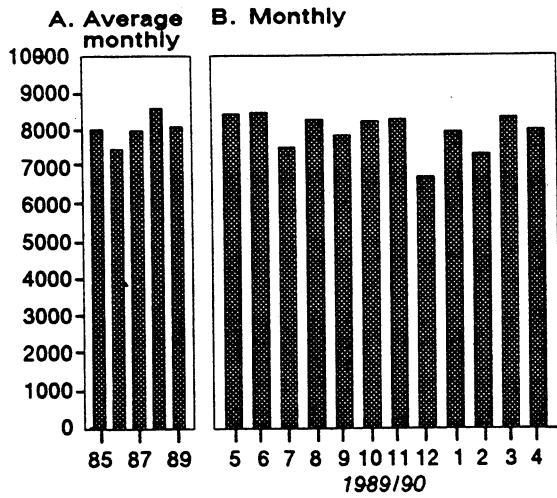


Figure 2
U.S. steel shipments
1,000 short tons

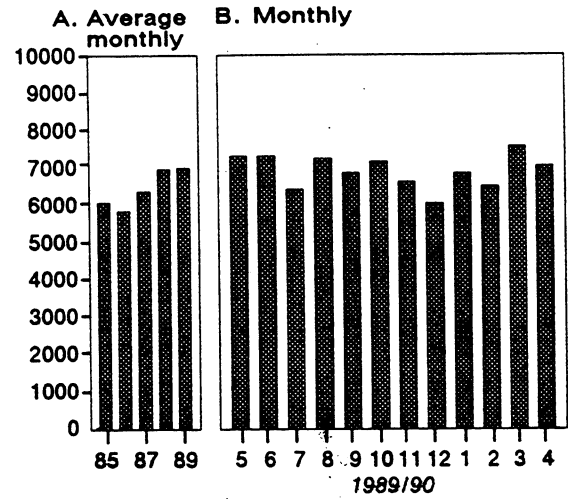


Figure 3
U.S. steel imports
1,000 short tons

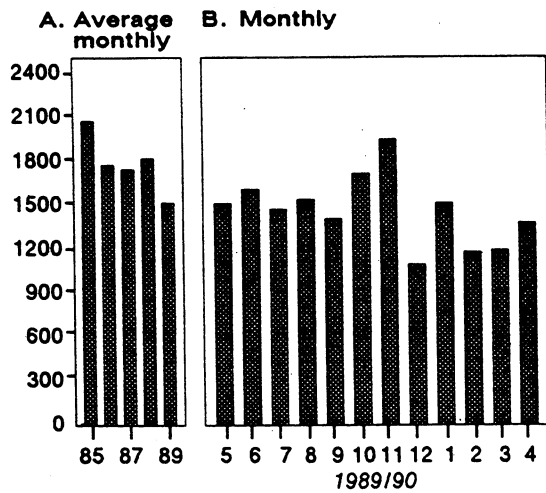


Figure 4
U.S. steel exports
1,000 short tons

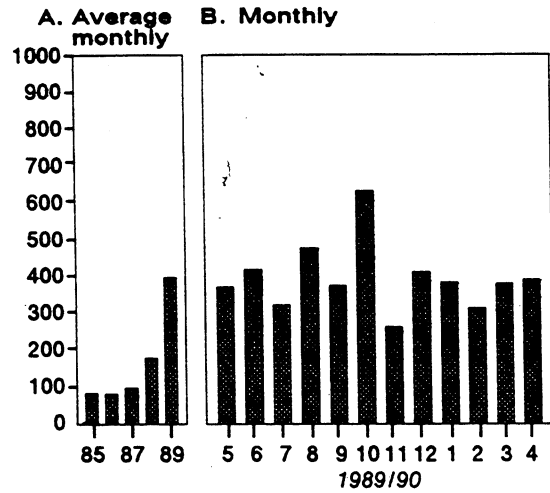


Figure 5
U.S. steel import penetration ¹
Percent

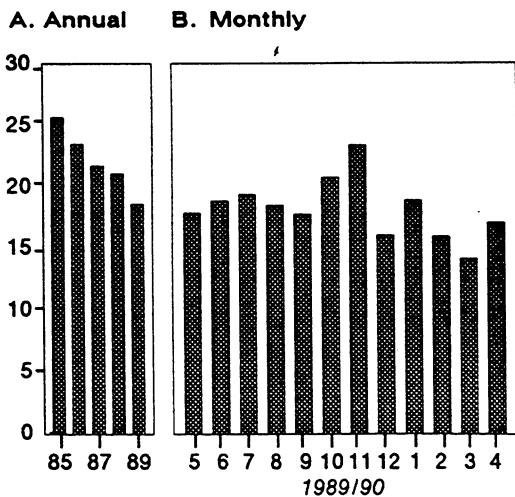
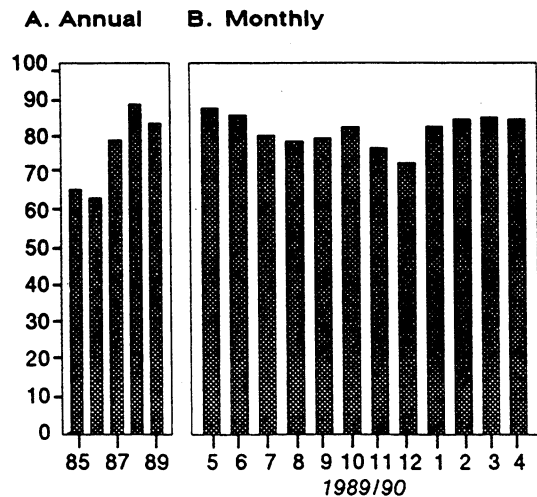


Figure 6
U.S. raw steel capacity utilization
Percent



¹ Import penetration is defined as the percent of apparent consumption represented by imports.

Preface

On December 29, 1989, at the request of the Committee on Ways and Means, U.S. House of Representatives,¹ and in accordance with the provisions of section 332(g) of the Tariff Act of 1930 (19 U.S.C. 1332(g)), the United States International Trade Commission announced the continuation of investigation No. 332-226, Monthly Reports on the Status of the Steel Industry.² The purpose of the reports is to monitor developments in the steel industry through March 1992, which corresponds with the President's extension of the voluntary restraint arrangements (VRAs) with certain countries and regions which export steel to the United States. The original investigation was instituted by the Commission on April 9, 1986.

Background of the VRAs

On September 18, 1984, the President determined, under section 202(b)(1) of the Trade Act of 1974, that taking "escape clause" action was not in the national economic interest (49 Federal Register 36813). The decision followed an investigation conducted by the Commission in which imports of certain steel products were found to be a substantial cause of serious injury, or threat thereof, to certain domestic industries (investigation No. TA-201-51).³ Instead of taking action under the statute, the President established a nine-point policy to address the concerns of the industry. Under this policy, the President directed the United States Trade Representative to negotiate voluntary restraint arrangements (VRAs) to cover a five year period (from October 1, 1984 through September 30, 1989) with countries whose exports to the United States had increased significantly in previous years due to an unfair surge in imports. Although the structure of the arrangements varied from one country to another, each involved an agreement by the foreign government to limit exports of certain steel products to the United States; to bring the agreements into effect, U.S. producers withdrew pending unfair trade petitions and the U.S. Government suspended antidumping and countervailing duties that were in effect on steel products covered by the VRAs. The trade measures were expected to return the share of imports in the U.S. market to a more normal level of approximately 18.5 percent, excluding semifinished steel (which subsequent Administration statements indicated were limited to about 1.7 million tons per year).

Specialty steel

On July 19, 1983, the President announced his decision to grant import relief to the specialty steel industry for a period of 4 years (53

¹See appendix A for a copy of the request.

²See appendix B for the notice of continuation.

³Affirmative decisions were rendered in the case of semifinished steel, plates, sheets and strip, wire and wire products, and structural shapes and units. Negative determinations were rendered in the case of wire rod, railway type products, bars, and pipes and tubes.

Federal Register 52897). The relief was scheduled to expire on July 19, 1987. Under the relief, quotas were placed on imports of stainless steel bars, stainless steel wire rods, and certain alloy tool steel products; increased duties were imposed on stainless steel plates and stainless steel sheets and strip. On July 16, 1987, the President announced his decision to extend the import relief in the form then in effect for a period from July 20, 1987 through September 30, 1989. Under the steel VRAs, in return for their agreement to limit exports of stainless steel plates and sheets and strip, the VRA countries were exempted from having to pay additional duties (with the exception of Finland, whose VRA does not include stainless steel flat-rolled products). Quotas were unaffected by the VRAs for all countries except the EC-10, which negotiated limits on rods, bars, and alloy tool steel as part of its VRA; Brazil, whose VRA includes the specialty steel products subject to quotas; and Austria, which included alloy tool steel in its VRA.

Extension of the VRAs

On July 25, 1989, the President announced a Steel Trade Liberalization Program, under which the VRAs were extended for two and one-half years, terminating on March 31, 1992. The President directed the U.S. Trade Representative to negotiate VRAs at an overall restraint level of 18.4 percent (which is the same as the 1988 VRA import penetration level). In order to provide incentives for countries to eliminate trade-distorting practices and in order to respond to concerns of steel consumers for adequate supplies of raw materials, the President authorized up to an additional one percent import penetration annually that would be available to countries that entered into bilateral consensus agreements.⁴

On December 12, 1989, the U.S. Trade Representative announced that negotiations had been completed with the European Community and the 16 other countries that previously had VRAs.⁵ As a result of the negotiations, the restraint levels for steel mill products (including semifinished steel) increased to a 19.1 percent share of domestic consumption in the first period of the new VRA program (table A). Additional increases in restraint levels have been authorized for subsequent years for countries that have entered into bilateral consensus agreements.⁶ Product coverage under the VRAs remains essentially unchanged though the agreements have been modified to include those specialty steel products that were previously subject to relief under section 203 of the Trade Act of 1974.

⁴Negotiations for bilateral agreements were conducted in order to restrict trade-distorting practices, and to address the causes rather than the symptoms affecting world trade in steel.

⁵South Africa is the only country with which the United States did not renew the VRA.

⁶Countries or regions with which the U.S. has negotiated bilateral agreements are the EC, Japan, South Korea, Brazil, Mexico, Australia, and Trinidad and Tobago. Although bilateral agreements have been reached with Austria, Finland and Yugoslavia, there has been no announcement of additional market share increases for those countries.

Table A
Overall ceiling levels under initial and extended voluntary restraint arrangements

Country	VRA I	First	Second	Third
		Period 1/	Period 1/	Period 1/
-----Percent-----				
Australia <u>2/</u> -----	0.26	0.39	0.49	0.59
Austria-----	0.24	0.25	0.25	0.25
Brazil <u>2/</u> -----	1.35	1.80	2.10	2.10
Czechoslovakia-----	0.04	0.04	0.04	0.04
EC <u>2/</u> -----	6.94	7.00	7.00	7.00
Finland-----	0.24	0.25	0.25	0.25
East Germany-----	0.11	0.10	0.10	0.10
Hungary-----	0.03	0.05	0.05	0.05
Japan <u>2/</u> -----	6.19	5.00	5.30	5.30
South Korea <u>2/</u> -----	1.92	2.45	2.62	2.62
Mexico <u>2/</u> -----	0.49	0.95	1.10	1.10
PRC-----	0.08	0.08	0.09	0.09
Poland-----	0.09	0.13	0.13	0.13
Romania-----	0.11	0.11	0.11	0.11
Trinidad and Tobago <u>2/</u> ---	0.04	0.12	0.13	0.15
Venezuela-----	0.21	0.33	0.33	0.33
Yugoslavia-----	0.02	0.05	0.05	0.05
Total-----	18.36	19.10	20.14	20.26

¹ Numbers are approximate because some VRAs were negotiated for two 15-month periods, and others were negotiated for other combinations totaling 30 months. Market shares are based on 1989 apparent consumption.

² Includes allocation of bonus percentage (see Preface for explanation). Amount of allocation not specified.

Source: USTR press release, December 12, 1989.

Structure of the Report

- o The Monthly Review section provides perspective on imports and trade by highlighting specific products, countries, or customs areas. The inclusion of such insights, which may not be readily apparent from the report's tabulated data, are intended to focus attention on important events in the steel industry. A chronological listing of Monthly Review topics immediately follows each month's review.
- o Table 1 provides data on key items, including raw steel production, capability utilization, employment, wages, shipments, trade, and financial performance.
- o Tables 2-6 provide data on shipments, imports, exports, apparent consumption, and imports as a percent of apparent consumption by major product for all grades of steel, plus carbon and specialty products separately.
- o Table 7 provides quantity and value data on imports of total steel mill products and certain fabricated products. The EC and each VRA country are specified, as are the top 10 non-VRA suppliers. The table can be used to measure the extent to which penetration is approaching the levels anticipated under the President's steel policy.
- o Table 8 provides data on the quantity of steel other than semifinished steel, which is being imported from the EC, each VRA country, and the top non-VRA suppliers, and the market penetration of each country.
- o Table 9 provides data on the quantity of semifinished steel imported from the EC, each VRA country, and the top non-VRA suppliers, and presents the 1989 semifinished unadjusted export ceilings of each VRA country.
- o Tables 10-29 provide data on the quantity and value of major carbon and specialty steel imports on a product-by-product basis. The EC, each VRA country, and the top non-VRA suppliers are specified.
- o Table 30 provides data on the unit values of selected imports of carbon and specialty steel products.
- o Table 31 provides data on imports of selected carbon and specialty steel products. The table also provides information which permits an examination of the extent to which shifts in product mix within major product categories is occurring.
- o Tables 32-37 provide data on imports of steel mill products and certain fabricated products, by U.S. customs area.

Notes on Product Coverage and Methodology

Data on foreign trade and domestic shipments are compiled from official statistics of the U.S. Department of Commerce and from statistics of the American Iron and Steel Institute (AISI), respectively.

The products for which foreign trade data are collected generally correspond to those covered by the VRAs. Since the VRAs include certain fabricated products (defined as wire strand, wire ropes, cables, cordage and fabricated structural units), the data may exceed that compiled by other organizations such as the AISI. The additional tonnage, however, is relatively small. In 1989, AISI reported imports of 17.3 million tons, which compares to the 18.2 million tons indicated in this report. The product categories most affected are structural shapes and units (which includes fabricated structurals in this report) and wire and wire products (which includes wire rope and wire strand).

The EC VRA now includes Portugal and Spain, which are no longer subject to separate VRAs.

In table 30, unit values are calculated using unrounded data. Import values are customs value, i.e., the data do not include insurance and freight charges from the country of origin to the United States.

Trade data include imports under sections 9802.0060 and 9802.0080 of the Harmonized Tariff Schedule and sections 806.30 and 807.00 of the Tariff Schedule of the United States. These provisions apply to U.S. merchandise which is exported, processed, and reimported into the United States.

For the purposes of statistical continuity, South Africa continues to be listed as a VRA country.

As of the February 1990 report, the source for the data on employment levels in Table 1 was changed from the American Iron and Steel Institute (AISI) to the U.S. Department of Labor, Bureau of Labor Statistics (BLS). AISI employment figures cover reporting companies only; these companies represent a declining share of total raw steel production. The BLS data cover the entire steel industry, as defined by Standard Industrial Code 331, which includes the electrometallurgical products (or ferroalloy) industry. In the past, this industry, which is not generally defined as part of the steel industry, has represented less than three percent of total employment levels reporting under this SIC.

Beginning with the February 1990 report, data on tool steel imports were revised so as to exclude bearing steel products; the revisions affect data going back to January 1989. The revised data, which are consistent with industry practice and reports prior to 1989, treat bearing steel as an alloy steel and categorize it according to its end form--either plate, sheet and strip, or rod. Unlike data on imports and shipments, available data on tool steel exports include some bearing steel products. As a result, apparent consumption calculations (see table 5) are slightly understated in the case of

tool steel, and slightly overstated in the case of plate, sheet and strip, and rod. The ITC staff estimates, however, that the degree of understatement/overstatement is minor, as exports of bearing steel products are believed to be relatively low.

The continuity of certain trade data was affected by the implementation of the HTS due to changes in the metallurgical specifications of alloy steel and two important subsets of alloy steel: stainless steel and tool steel. In the case of alloy steel and tool steel, definitions have been broadened in some areas and narrowed in others, making it difficult to determine the net impact on trade figures. In the case of stainless steel, the definition has been broadened. Under the TSUS stainless steel was defined as any alloy steel which contained, by weight, less than 1 percent of carbon and over 11.5 percent of chromium; the HTS defines stainless steel as alloy steels containing, by weight, 1.2 percent or less of carbon and 10.5 percent or more of chromium, with or without other elements.

Following consultation with the U.S. Department of Commerce, the ITC staff made the following revision to the February 1990 data: exports of carbon steel rails were reduced by 252,410 tons.

C O N T E N T S

	<u>Page</u>
Monthly Review: Selected Topics on the Steel Industry-----	i
U.S. Steel Industry Highlights-----	v
Monthly Review Index-----	vii
Preface-----	ix
Appendix A: Request letter from the Honorable Dan Rostenkowski, Chairman of the Committee on Ways and Means, U.S. House of Representatives-----	A-1
Appendix B: Notice of continuation of investigation No. 332-226 in the Federal Register-----	B-1
Appendix C: Definitions of certain terms, and descriptions of the products subject to the investigation-----	C-1

Tables

1. Steel: U.S. raw steel production, capability utilization, employ- ment, wages, shipments, imports, exports, apparent consumption, net sales, and net income, 1985-89, and by specified periods, 1989 and 1990-----	1
2. Steel mill products and certain fabricated steel products: U.S. producers' shipments, by product and grade of steel, 1985-89, and by specified periods, 1989 and 1990-----	2
3. Steel mill products and certain fabricated steel products: U.S. imports, by product and grade of steel, 1985-89, and by specified periods, 1989 and 1990-----	3
4. Steel mill products and certain fabricated steel products: U.S. exports of domestic merchandise, by product and grade of steel, 1985-89, and by specified periods, 1989 and 1990-----	4
5. Steel mill products and certain fabricated steel products: Apparent U.S. consumption, by product and grade of steel, 1985-89, and by specified periods, 1989 and 1990-----	5
6. Steel mill products and certain fabricated steel products: U.S. imports as a percent of apparent consumption, by product and grade of steel, 1985-89, and by specified periods, 1989 and 1990-----	6
7. Steel mill products and certain fabricated steel products: U.S. imports for consumption, by specified sources, 1988, 1989, and by specified periods, 1989 and 1990-----	7
8. Steel other than semifinished steel: U.S. imports for consumption, and imports as a percent of apparent U.S. consumption, by specified sources, 1988, 1989, and by specified periods, 1989 and 1990-----	9

CONTENTS

Tables

9.	Semifinished steel: U.S. imports for consumption, by specified sources, 1988, 1989, and by specified periods, 1989 and 1990-----	11
10.	Carbon and certain alloy semifinished steel: U.S. imports for consumption, by specified sources, 1988, 1989, and by specified periods, 1989 and 1990-----	12
11.	Carbon and certain alloy steel plate: U.S. imports for consumption, by specified sources, 1988, 1989, and by specified periods, 1989 and 1990-----	14
12.	Carbon and certain alloy steel sheet and strip: U.S. imports for consumption, by specified sources, 1988, 1989, and by specified periods, 1989 and 1990-----	16
13.	Carbon and certain alloy steel bar and light shapes: U.S. imports for consumption, by specified sources, 1988, 1989, and by specified periods, 1989 and 1990-----	18
14.	Carbon and certain alloy steel wire rod: U.S. imports for consumption, by specified sources, 1988, 1989, and by specified periods, 1989 and 1990-----	20
15.	Carbon and certain alloy steel wire: U.S. imports for consumption, by specified sources, 1988, 1989, and by specified periods, 1989 and 1990-----	22
16.	Carbon and certain alloy steel wire products: U.S. imports for consumption, by specified sources, 1988, 1989, and by specified periods, 1989 and 1990-----	24
17.	Carbon and certain alloy steel structural shapes: U.S. imports for consumption, by specified sources, 1988, 1989, and by specified periods, 1989 and 1990-----	26
18.	Carbon and certain alloy steel rails and related products: U.S. imports for consumption, by specified sources, 1988, 1989, and by specified periods, 1989 and 1990-----	28
19.	Carbon and certain alloy steel pipe and tube: U.S. imports for consumption, by specified sources, 1988, 1989, and by specified periods, 1989 and 1990-----	30
20.	Total, carbon and certain alloy steel products: U.S. imports for consumption, by specified sources, 1988, 1989, and by specified periods, 1989 and 1990-----	32
21.	Stainless semifinished steel: U.S. imports for consumption, by specified sources, 1988, 1989, and by specified periods, 1989 and 1990-----	34
22.	Stainless steel plate: U.S. imports for consumption, by specified sources, 1988, 1989, and by specified periods, 1989 and 1990-----	36
23.	Stainless steel sheet and strip: U.S. imports for consumption, by specified sources, 1988, 1989, and by specified periods, 1989 and 1990-----	38
24.	Stainless steel bars and shapes: U.S. imports for consumption, by specified sources, 1988, 1989, and by specified periods, 1989 and 1990-----	40

CONTENTS

Tables

25.	Stainless steel wire rod: U.S. imports for consumption, by specified sources, 1988, 1989, and by specified periods, 1989 and 1990-----	42
26.	Stainless steel wire: U.S. imports for consumption by specified sources, 1988, 1989, and by specified periods, 1989 and 1990-----	44
27.	Stainless steel pipe and tube: U.S. imports for consumption by specified sources, 1988, 1989, and by specified periods, 1989 and 1990-----	46
28.	Alloy tool steel (all forms): U.S. imports for consumption by specified sources, 1988, 1989, and by specified periods, 1989 and 1990-----	48
29.	Total, stainless and alloy tool steel products: U.S. imports for consumption, by specified sources, 1988, 1989, and by specified periods, 1989 and 1990-----	50
30.	Steel mill products and certain fabricated steel products: Unit value of U.S. imports for consumption, by specified sources, 1988, 1989, and by specified periods, 1989 and 1990-----	52
31.	Steel mill products and certain fabricated steel products: U.S. imports for consumption of specified products and imports as a percent of major product groupings, 1988, 1989, and by specified periods, 1989 and 1990-----	54
32.	Steel mill products and certain fabricated steel products: U.S. imports for consumption, by customs areas, 1988, 1989, and by specified periods, 1989 and 1990-----	60
33.	Steel mill products and certain fabricated steel products: U.S. imports for consumption, through the Atlantic Coast customs area, 1988, 1989, and by specified periods, 1989 and 1990-----	61
34.	Steel mill products and certain fabricated steel products: U.S. imports for consumption, through the Great Lakes-Canadian border customs area, 1988, 1989, and by specified periods, 1989 and 1990-----	62
35.	Steel mill products and certain fabricated steel products: U.S. imports for consumption, through the Gulf Coast-Mexican border customs area, 1988, 1989, and by specified periods, 1989 and 1990-----	63
36.	Steel mill products and certain fabricated steel products: U.S. imports for consumption, through Off-shore customs area, 1988, 1989, and by specified periods, 1989 and 1990-----	64
37.	Steel mill products and certain fabricated steel products: U.S. imports for consumption, through the Pacific Coast customs area, 1988, 1989, and by specified periods, 1989 and 1990-----	65



Table 1 U.S. raw steel production, capability utilization, employment, wages, shipments, imports, exports, apparent consumption, net sales, 1985-89 and specified periods, 1989 and 1990

Item	1985-1989					1990	
	1985	1986	1987	1988	1989	1989	1990
Raw steel:							
Production (1,000 short tons)....	88,259	81,606	89,151	99,924	97,480	34,499	32,619
Capability utilization							
(percent).....	66.1	63.8	79.5	89.2	84.1	90.3	84.9
Continuously cast (percent).....	44.4	55.2	59.8	61.3	64.6	62.2	66.5
Employment:							
Total (thousands) ¹	302.6	273.5	268.4	277.2	274.3	3276.2	3268.3
Production workers							
(thousands) ¹	231.5	208.8	202.9	214.6	211.6	3214.1	3206.2
Hourly employment cost ²							
(dollars).....	22.81	23.24	23.71	24.65	24.63	24.57	25.47
Steel:							
Shipments (1,000 short tons)....	73,043	70,263	76,654	83,840	84,259	29,273	28,001
Imports (1,000 short tons).....	24,885	21,289	20,938	21,869	18,219	5,974	5,256
Exports (1,000 short tons).....	992	980	1,176	2,152	4,778	1,494	1,471
Apparent consumption (1,000 short tons).....	96,936	90,572	96,416	103,558	97,700	33,753	31,786
Ratio of imports to consumption							
(percent).....	25.7	23.5	21.7	21.1	18.6	17.7	16.5
Steel operations:							
Net steel sales (million dollars).....	28,272	24,875	26,933	32,466	31,969	38,249	38,143
Net steel income (million dollars).....	(1,834)	(4,150)	1,077	(565)	1,478	3663	3314
Ratio of income to net sales							
(percent).....	(6.5)	(16.7)	4	(1.7)	4.6	38.0	33.9

¹These figures represent employment in Standard Industrial Code (SIC) 331. (See Notes for explanation).

²Total employment costs (including benefits) of employees receiving wages.

³First Quarter.

Source: Compiled from data of the American Iron & Steel Institute and official statistics of the U.S. Department of Commerce and the U.S. Department of Labor (Bureau of Labor Statistics).

Table 2.--Steel mill products and certain fabricated steel products: U.S. producers shipments, by product and grade of steel, 1985-1989, and by specified periods, 1989 and 1990

(Short tons)

Item	1985				1986				1987				1988				1989				January-April 1990				
All grades of steel:																									
Semifinished	1,374,524				1,485,249				1,593,216				1,927,658				1,850,245				696,188				627,232
Plate	4,327,347				3,564,806				4,047,919				7,327,887				7,293,115				2,452,775				2,701,521
Sheet and strip	40,850,298				40,493,141				43,288,266				44,707,915				45,376,975				15,863,323				14,368,451
Bars & certain shapes 1/	12,667,539				12,171,142				13,575,114				14,488,773				14,510,007				5,028,542				5,021,798
Wire rod	2,961,769				3,463,827				3,840,494				4,048,230				4,229,889				1,428,901				1,393,803
Wire products	874,135				802,259				800,063				1,072,698				1,005,407				363,851				338,401
Structural shapes & units	262,268				278,068				304,761				3/				3/				3/				3/
Rails & related products	4,698,305				4,527,632				5,119,714				5,208,754				5,438,404				1,922,846				1,872,078
Pipe and tube	931,513				640,197				514,647				615,303				544,771				221,031				176,660
Total	4,095,825				2,836,458				3,369,647				4,543,251				4,010,591				1,295,681				1,501,264
Carbon & certain alloy 2/	73,043,323				70,262,779				76,653,841				83,840,469				84,259,404				29,273,138				28,001,208
steel:																									
Semifinished	1,327,766				1,435,662				1,516,152				1,851,197				1,753,249				664,843				586,776
Plate	4,185,883				3,448,947				3,888,838				7,145,009				7,123,691				2,388,264				2,631,852
Sheet and strip	40,018,167				39,693,739				42,347,623				43,663,695				44,419,414				15,505,132				14,049,813
Bars & certain shapes	12,478,002				11,996,343				13,391,238				14,284,744				14,304,189				4,958,467				4,954,636
Wire rod	2,931,897				3,427,428				3,792,740				3,990,472				4,193,118				1,413,840				1,382,383
Wire products	851,841				777,604				773,329				1,043,112				980,707				353,871				331,007
Structural shapes & units	262,268				278,068				304,761				3/				3/				3/				3/
Rails & related products	4,698,305				4,527,632				5,119,714				5,208,754				5,438,404				1,922,846				1,872,078
Pipe and tube	931,513				640,197				514,647				615,303				544,771				221,031				176,660
Total	4,046,771				2,794,218				3,527,867				4,387,761				3,962,470				1,277,536				1,485,568
Stainless & alloy tool	71,732,213				69,019,838				75,176,909				82,190,047				82,720,013				28,705,830				27,470,773
steel:																									
Semifinished	46,758				49,587				77,064				76,461				96,996				31,345				40,456
Plate	141,464				115,859				159,081				182,878				169,424				64,511				69,669
Sheet and strip	832,131				799,402				940,643				1,044,220				957,561				358,191				318,638
Bars & certain shapes	129,267				119,024				125,441				139,752				138,618				47,061				48,974
Wire rod	29,872				36,399				47,754				57,758				36,771				15,061				11,420
Wire products	22,294				24,655				26,734				29,586				24,700				9,980				9,394
Pipe and tube	49,054				42,240				41,780				55,490				48,121				18,145				15,696
Total	60,270				55,775				58,435				64,277				67,200				23,014				18,188
Total	1,311,110				1,242,941				1,476,932				1,650,422				1,539,391				567,308				530,435

1/ Includes tool steel.
 2/ Certain alloy refers to alloy steel other than stainless or tool steel.
 3/ Shipment and apparent consumption data for wire and wire products have been combined and are reported in the category designated "wire".

Source: Compiled from data of the American Iron & Steel Institute.

Table 3.--Steel mill products and certain fabricated steel products: U.S. imports, by product and grade of steel, 1985-1989,
and by specified periods, 1989 and 1990
(Short tons)

Item	January-April					
	1985	1986	1987	1988	1989	1990
All grades of steel:						
Semifinished	2,440,368	2,084,322	2,288,995	2,844,979	2,197,811	708,468
Plate	1,772,309	1,456,790	1,566,694	1,872,937	1,437,109	472,818
Sheet and strip	9,046,089	8,278,604	7,875,891	7,303,964	6,443,362	1,939,759
Bars and certain shapes 1/	1,550,559	1,476,368	1,359,932	1,445,932	1,356,035	1,786,953
Wire rod	1,476,145	1,362,753	1,467,030	1,493,833	1,150,116	326,814
Wire	612,485	582,022	555,981	540,380	494,303	374,754
Wire products	674,960	636,591	649,377	572,451	703,602	155,567
Structural shapes & units	2,440,403	2,179,657	2,153,669	2,188,467	1,640,361	245,669
Rails and related products	382,046	275,710	245,988	319,432	322,985	312,081
Pipe and tube	4,489,287	2,956,303	2,775,091	3,286,690	2,472,802	94,573
Total	24,884,651	21,289,120	20,938,474	21,869,065	18,218,486	5,974,343
Carbon & certain alloy steel:						
Semifinished	2,430,078	2,066,700	2,232,270	2,782,572	2,135,690	683,998
Plate	1,760,812	1,440,375	1,555,577	1,857,090	1,419,396	352,680
Sheet and strip	8,910,469	8,127,033	7,746,596	7,185,380	6,302,844	1,744,078
Bars & certain shapes	1,475,447	1,393,731	1,281,168	1,361,113	1,264,305	1,299,380
Wire rod	1,456,078	1,344,256	1,448,720	1,474,623	1,128,417	368,269
Wire	590,317	564,481	536,897	519,727	472,984	149,642
Wire products	674,960	636,591	649,377	572,451	703,602	245,669
Structural shapes & units	2,440,403	2,179,657	2,153,669	2,188,467	1,640,361	312,081
Rails and related products	382,046	275,710	245,988	319,432	322,985	94,573
Pipe and tube	4,457,277	2,923,029	2,748,644	3,249,937	2,435,544	827,775
Total	24,577,887	20,951,563	20,598,906	21,510,792	17,826,128	5,132,284
Stainless & alloy tool steel:						
Semifinished	10,290	17,622	56,725	62,407	62,121	16,100
Plate	11,497	16,415	11,118	15,847	17,713	6,762
Sheet and strip	135,620	151,571	129,295	118,584	140,519	42,874
Bars & certain shapes	37,970	37,888	37,991	40,724	43,417	14,145
Wire rod	20,067	18,496	18,311	19,210	21,698	7,346
Wire	22,169	17,541	19,084	20,653	21,319	5,925
Pipe and tube	32,009	33,274	26,448	36,752	37,258	16,840
Tool steel (all forms)	37,142	44,749	40,599	44,095	48,313	13,289
Total	306,764	337,556	339,571	358,272	392,358	123,261

1/ Includes tool steel.
2/ Certain alloy refers to alloy steel other than stainless or tool steel.

Source: Compiled from official statistics of the U.S. Department of Commerce.

Table 4.---Steel mill products and certain fabricated steel products: U.S. exports of domestic merchandise, by product and grade of steel, 1985-1989, and by specified periods, 1989 and 1990

(Short tons)

Item	January-April				
	1985	1986	1987	1988	1989
All grades of steel:					
Semifinished	89,708	58,885	73,543	61,430	51,901
Plate	82,988	69,565	96,538	119,393	290,767
Sheet and strip	375,396	507,420	556,991	1,374,056	762,048
Bars and certain shapes 1/	99,096	81,224	121,869	141,461	73,882
Wire rod	4,740	5,876	8,217	10,161	9,892
Wire	19,146	26,669	26,669	36,668	31,344
Wire products	19,253	24,731	27,847	27,847	32,160
Structural shapes & units	89,031	71,525	101,373	111,614	79,666
Rails & related products	13,430	13,131	15,755	18,855	27,613
Pipe and tube	199,258	121,050	152,155	250,390	180,478
Total	992,046	980,167	1,176,367	2,151,875	1,494,095
Carbon and certain alloy 2/ steel:					
Semifinished	82,650	57,932	71,362	58,598	48,863
Plate	74,957	66,042	92,057	107,546	287,542
Sheet and strip	349,620	477,803	501,010	1,328,485	744,995
Bars and certain shapes	89,241	72,134	111,619	124,911	56,354
Wire rod	3,716	5,049	6,889	8,676	7,971
Wire	17,182	24,033	22,863	32,209	8,992
Wire products	19,253	24,731	23,257	27,847	8,163
Structural shapes & units	89,031	71,525	101,373	111,614	79,666
Rails & related products	13,430	13,131	15,755	18,855	27,613
Pipe and tube	193,309	118,010	143,405	244,192	177,088
Total	932,389	930,390	1,089,590	2,062,933	1,447,247
Stainless & alloy tool steel:					
Semifinished	7,058	953	2,181	2,833	3,038
Plate	8,031	3,523	4,481	11,847	3,225
Sheet and strip	25,776	29,617	55,981	45,571	17,053
Bars & certain shapes	7,762	6,946	7,189	12,047	6,397
Wire rod	1,024	828	1,328	1,486	1,715
Wire	1,964	2,728	3,806	4,459	3,900
Pipe and tube	5,948	3,040	8,751	6,198	3,390
Total	2,094	2,144	3,061	4,502	11,131
Total	59,657	49,779	86,778	88,943	46,849

1/ Includes tool steel.
2/ Certain alloy refers to alloy steel other than stainless or tool steel.

Source: Compiled from official statistics of the U.S. Department of Commerce.

Table 5.--Steel mill products and certain fabricated steel products: Apparent U.S. consumption, by product and grade of steel, 1985-1989, and by specified periods, 1989 and 1990 (Short tons)

Item	January-April				
	1985	1986	1987	1988	1989
All grades of steel:					
Semifinished	3,725,184	3,510,686	3,808,668	4,711,207	3,657,244
Plate	6,016,668	4,952,031	5,518,075	9,081,431	2,634,826
Sheet and strip	49,520,991	48,254,325	50,607,166	50,637,823	17,041,034
Bars and certain shapes 1/	14,119,002	13,566,286	14,813,003	15,793,244	5,440,043
Wire rod	4,433,174	4,820,704	5,299,307	5,531,902	1,794,484
Wire	1,467,474	1,357,521	1,329,375	2,121,014	1,745,312
Wire products	917,975	859,928	930,881	7,285,607	2,485,954
Structural shapes & units	7,049,677	6,635,764	7,172,010	915,880	324,735
Rails & related products	1,299,929	902,776	744,880	7,479,551	1,934,243
Pipe and tube	8,382,854	5,671,711	6,192,583	7,479,551	1,934,243
Total	96,933,928	90,571,732	96,415,948	103,557,659	33,753,386
Carbon & certain alloy 2/					
steel:					
Semifinished	3,675,194	3,444,430	3,677,060	4,575,171	1,298,980
Plate	5,871,738	4,823,280	5,352,358	8,894,553	2,566,823
Sheet and strip	48,579,016	47,342,969	49,593,209	49,520,590	16,657,488
Bars & certain shapes	13,864,208	13,317,940	14,560,787	15,520,946	5,356,926
Wire rod	4,384,259	4,766,635	5,234,571	5,456,419	1,774,138
Wire	1,424,976	1,318,052	1,287,363	2,075,234	1,728,027
Wire products	917,975	889,928	930,881	7,285,607	2,485,954
Structural shapes & units	7,049,677	6,635,764	7,172,010	915,880	324,735
Rails & related products	1,299,929	902,776	744,880	7,479,551	1,934,243
Pipe and tube	8,310,739	5,599,237	6,133,106	7,393,506	1,905,843
Total	95,377,711	89,041,011	94,686,225	101,637,906	33,098,914
Stainless & alloy tool steel:					
Stainless steel:					
Semifinished	49,990	66,256	131,608	136,035	53,775
Plate	144,930	128,751	165,718	186,878	68,003
Sheet and strip	941,975	921,356	1,013,957	1,117,233	383,546
Bars & certain shapes	159,475	149,966	156,243	168,429	53,675
Wire rod	48,915	54,067	64,737	75,482	20,346
Wire	42,499	39,468	42,012	45,780	17,285
Pipe and tube	75,115	72,474	59,477	86,044	28,400
Tool steel (all forms)	95,318	98,380	95,973	103,870	29,493
Total	1,558,217	1,530,718	1,729,725	1,919,751	654,473

1/ Includes tool steel.

2/ Certain alloy refers to alloy steel other than stainless or tool steel.

3/ Shipment and apparent consumption data for wire and wire products have been combined and are reported in the category designated "wire".

Source: Compiled from data of the American Iron & Steel Institute, and official statistics of the U.S. Department of Commerce.

Table 6.--Steel mill products and certain fabricated steel products: U.S. imports as a percent of apparent consumption, by product and grade of steel, 1985-1989, and by specific periods, 1989 and 1990 (Percent)

Item	1985					1986					1987					1988					1989					January-April 1990	
All grades of steel:																											
Semifinished	65.5					59.4					60.1					60.4					60.1					52.4	
Plate	29.5					29.4					17.7					20.6					17.7					17.9	
Sheet and strip	18.3					17.2					13.1					14.4					13.1					11.4	
Bars & certain shapes 1/	11.0					10.9					8.7					9.2					8.7					8.9	
Wire rod	33.3					28.3					27.0					27.0					21.5					20.9	
Wire	41.0					42.0					41.0					39.0					37.0					12.0	
Wire products	73.5					71.5					69.8					3/					3/					3/	
Structural shapes & units	34.6					32.8					30.0					30.0					24.1					25.9	
Rails & related products	29.4					30.5					33.0					34.9					41.3					40.4	
Pipe and tube	53.5					52.1					44.8					43.9					40.9					42.3	
Total	25.7					23.5					21.7					21.1					18.6					17.7	
Carbon & certain alloy 2/																											
Steel:																											
Semifinished	66.1					60.0					60.7					60.8					60.8					52.6	
Plate	30.0					29.9					29.1					20.9					17.9					18.2	
Sheet and strip	18.3					17.2					15.6					14.5					13.1					11.4	
Bars & certain shapes	10.6					10.5					8.8					8.8					8.2					8.5	
Wire rod	33.2					28.2					27.7					27.0					21.3					20.8	
Wire	41.0					42.0					41.0					39.0					37.0					27.0	
Wire products	73.5					71.5					69.8					3/					3/					3/	
Structural shapes & units	34.6					32.8					30.0					30.0					24.1					25.9	
Rails & related products	29.4					30.5					33.0					34.9					41.3					40.4	
Pipe and tube	53.6					52.2					44.8					44.0					40.8					42.3	
Total	25.8					23.5					21.8					21.2					18.6					17.6	
Stainless & alloy tool steel:																											
Stainless steel:																											
Semifinished	20.6					26.6					43.1					45.9					42.8					47.4	
Plate	7.9					12.7					6.7					8.5					9.8					9.9	
Sheet and strip	14.4					16.5					12.8					10.6					13.4					11.1	
Bars & certain shapes	23.8					25.3					24.3					24.2					26.2					24.2	
Wire rod	41.0					34.2					28.3					25.4					41.0					34.4	
Wire	52.2					44.4					45.4					45.1					49.1					47.5	
Pipe and tube	42.6					45.9					44.5					42.7					48.2					48.0	
Tool steel (all forms)	39.0					45.5					42.3					42.5					49.8					59.6	
Total	19.7					22.1					19.6					18.7					21.6					20.5	

1/ Includes tool steel.

2/ Certain alloy refers to alloy steel other than stainless or tool steel.

3/ Shipment and apparent consumption data for wire and wire products have been combined and are reported in the category designated "wire".

Source: Compiled from data of the American Iron & Steel Institute, and official statistics of the U.S. Department of Commerce.

Table 7.--Steel mill products and certain fabricated steel products: U.S. imports for consumption, by specified sources, 1988, 1989, and by specified periods, 1989 and 1990

Item	1988	1989	January--April	
			1989	1990
Quantity (short tons)				
VRA countries:				
Australia -----	282,085	274,578	122,190	73,362
Austria -----	138,101	86,486	14,256	25,913
Brazil -----	1,476,896	1,391,142	540,817	422,693
Czechoslovakia -----	37,301	25,693	745	1,264
East Germany -----	92,239	55,867	20,926	18,354
EC countries-----	6,276,220	5,676,977	1,651,246	1,404,528
Finland -----	212,989	216,716	67,202	86,126
Hungary -----	30,094	28,420	8,838	3,335
Japan -----	4,343,898	3,695,906	1,278,638	994,741
Mexico -----	488,367	467,605	95,932	245,445
Peoples Rep of China -----	68,840	62,028	15,983	20,785
Poland -----	89,648	72,786	24,025	12,678
Romania -----	102,548	49,451	4,742	5,140
Republic of South Africa -----	1,693	756	247	191
Korea, Republic of -----	1,572,602	1,191,970	417,739	447,796
Trinidad and Tobago -----	31,518	48,028	9,200	28,487
Venezuela -----	169,383	173,642	28,631	49,100
Yugoslavia -----	12,751	8,222	2,021	5,220
Total-----	15,427,173	13,526,273	4,303,378	3,845,158
Other countries:				
Canada -----	3,430,920	3,218,260	1,157,564	1,047,618
Sweden -----	575,055	254,507	108,255	65,659
Argentina -----	558,011	227,866	50,141	48,950
Turkey -----	307,985	211,804	64,446	45,782
Taiwan -----	252,112	164,019	62,458	65,370
India -----	100,261	106,110	41,747	28,183
Norway -----	181,502	90,181	33,455	6,611
Singapore -----	153,164	78,918	26,633	15,626
New Zealand -----	88,980	78,564	31,969	32,629
Indonesia -----	281,142	69,344	27,263	11,960
All others-----	512,760	192,639	67,034	42,001
Total-----	6,441,892	4,692,212	1,670,965	1,410,389
Grand total-----	21,869,065	18,218,485	5,974,343	5,255,547

Table 7.--Steel mill products and certain fabricated steel products: U.S. imports for consumption, by specified sources, 1988, 1989, and by specified periods, 1989 and 1990--Continued

Item	1988	1989	January--April	
			1989	1990
Value (thousand dollars)				
VRA countries:				
Australia -----	118,494	126,633	48,267	29,138
Austria -----	82,907	67,871	16,568	20,224
Brazil -----	463,632	473,506	181,129	115,795
Czechoslovakia -----	12,019	8,890	424	489
East Germany -----	31,340	18,908	7,100	6,004
EC countries -----	2,981,610	2,945,914	897,541	749,116
Finland -----	101,105	91,999	30,989	36,942
Hungary -----	8,600	9,155	2,936	1,057
Japan -----	2,562,005	2,426,329	800,156	688,405
Mexico -----	240,693	252,029	57,409	112,524
Peoples Rep of China -----	27,574	34,627	8,669	11,391
Poland -----	30,281	26,614	8,853	5,029
Romania -----	36,063	17,374	1,776	1,829
Republic of South Africa -----	1,487	594	229	144
Korea, Republic of -----	770,065	638,311	208,240	237,002
Trinidad and Tobago -----	8,602	14,695	3,006	7,986
Venezuela -----	53,699	61,681	10,921	19,157
Yugoslavia -----	5,947	3,423	846	2,123
Total -----	7,536,123	7,218,553	2,285,059	2,044,355
Other countries:				
Canada -----	1,706,602	1,697,641	619,138	530,544
Sweden -----	358,878	278,349	105,827	81,051
Argentina -----	221,845	110,210	21,210	24,510
Turkey -----	93,038	65,996	21,637	15,643
Taiwan -----	134,663	107,331	38,178	45,582
India -----	43,769	45,816	16,408	14,109
Norway -----	55,371	33,921	11,615	4,489
Singapore -----	50,365	32,735	10,818	8,274
New Zealand -----	35,995	41,302	15,381	14,775
Indonesia -----	81,687	24,760	10,189	5,233
All others -----	194,569	92,265	31,914	24,251
Total -----	2,976,782	2,530,326	902,315	768,461
Grand total -----	10,512,905	9,748,879	3,187,374	2,812,816

Source: Compiled from official statistics of the U.S. Department of Commerce.

Table 8.--Steel other than semifinished steel: $\frac{1}{2}$ U.S. imports for consumption, and imports as a percent of apparent U.S. consumption, by specified sources, 1988, 1989, and by specified periods, 1989 and 1990

Item	1988		1989		January-April	
					1989	1990
Quantity (Short tons)						
VRA countries:						
Australia -----	202,683	205,832	86,186	36,836		
Austria -----	138,029	86,486	14,256	25,913		
Brazil -----	755,083	724,260	295,782	121,257		
Czechoslovakia -----	37,301	25,693	745	1,264		
East Germany -----	92,239	55,867	20,926	18,354		
EC-----	5,084,148	4,732,130	1,372,327	1,126,710		
Finland -----	209,750	182,165	67,202	86,126		
Hungary -----	30,094	28,420	8,838	3,335		
Japan -----	4,264,692	3,608,721	1,243,547	988,790		
Mexico -----	424,451	390,447	90,915	156,025		
Peoples Rep of China -----	68,840	62,023	15,977	20,773		
Poland -----	89,295	72,493	23,759	12,678		
Romania -----	102,548	49,451	4,742	5,140		
Republic of South Africa -----	1,693	750	247	191		
Korea, Republic of -----	1,515,157	1,125,936	390,318	447,779		
Trinidad and Tobago -----	28,460	48,028	9,200	28,487		
Venezuela -----	119,720	125,160	28,631	49,100		
Yugoslavia -----	12,751	8,222	2,021	5,220		
Total-----	13,176,934	11,532,084	3,675,619	3,133,978		
Other countries:						
Canada -----	3,327,082	3,098,487	1,128,519	1,009,050		
Argentina -----	535,190	227,011	50,079	48,886		
Turkey -----	307,985	211,804	64,446	45,782		
Sweden -----	269,005	183,284	62,530	60,625		
Taiwan -----	252,112	164,018	62,458	65,348		
India -----	100,261	106,110	41,747	28,183		
Norway -----	116,917	84,304	27,578	6,611		
Singapore -----	153,164	78,918	26,633	15,626		
New Zealand -----	42,766	78,564	31,969	32,629		
Indonesia -----	276,988	69,344	27,263	11,960		
All others-----	465,682	186,746	67,033	41,769		
Total-----	5,847,152	4,488,590	1,590,255	1,366,469		
Grand total-----	19,024,086	16,020,674	5,265,874	4,500,447		

See footnotes at end of table.

Table 8.--Steel other than semifinished steel: ^{1/} U.S. imports for consumption, an imports as a percent of apparent U.S. consumption, by specified sources, 1988, 1989, and by specified periods, 1989 and 1990--Continued

Item	1988		1989		January-April	
					1989	1990
Import/consumption ratio (percent)						
VRA countries:						
Australia -----	.2	.2	.2	.3	.1	.1
Austria -----	.1	.1	.1	^{2/}	.1	.1
Brazil -----	.8	.8	.8	.9	.4	.4
Czechoslovakia -----	^{2/}	^{2/}	^{2/}	^{2/}	^{2/}	^{2/}
East Germany -----	.1	.1	.1	.1	.1	.1
EC-----	5.2	5.1	5.1	4.3	3.7	3.7
Finland -----	.2	.2	.2	.2	.3	.3
Hungary -----	^{2/}	^{2/}	^{2/}	^{2/}	^{2/}	^{2/}
Japan -----	4.4	3.9	3.9	3.9	3.7	3.7
Mexico -----	.4	.4	.4	.3	.1	.1
Peoples Rep of China -----	.1	.1	.1	^{2/}	.1	.1
Poland -----	.1	.1	.1	.1	^{2/}	^{2/}
Romania -----	.1	.1	.1	^{2/}	^{2/}	^{2/}
Republic of South Africa -----	^{2/}	^{2/}	^{2/}	^{2/}	^{2/}	^{2/}
Korea, Republic of -----	1.6	1.2	1.2	1.2	1.5	1.5
Trinidad and Tobago -----	^{2/}	.1	.1	^{2/}	.1	.1
Venezuela -----	.1	.1	.1	.1	.2	.2
Yugoslavia -----	^{2/}	^{2/}	^{2/}	^{2/}	^{2/}	^{2/}
Total-----	13.5	12.4	12.4	11.4	10.3	10.3
Other countries:						
Canada -----	3.4	3.3	3.3	3.5	3.3	3.3
Argentina -----	.5	.2	.2	.2	.2	.2
Turkey -----	.3	.2	.2	.2	.2	.2
Sweden -----	.3	.2	.2	.2	.2	.2
Taiwan -----	.3	.2	.2	.2	.2	.2
India -----	.1	.1	.1	.1	.1	.1
Norway -----	.1	.1	.1	.1	^{2/}	^{2/}
Singapore -----	.2	.1	.1	.1	.1	.1
New Zealand -----	^{2/}	.1	.1	.1	.1	.1
Indonesia -----	.3	.1	.1	.1	^{2/}	^{2/}
All others-----	.5	.2	.2	.2	.1	.1
Total-----	6.0	4.8	4.8	5.0	4.5	4.5
Grand total-----	19.5	17.2	17.2	16.4	14.8	14.8

^{1/} Semifinished steel includes ingots, blooms, billets, slabs, and sheet bars.
^{2/} Less than 0.05 percent.

Source: Compiled from data of the American Iron and Steel Institute and from official statistics of the U.S. Department of Commerce.

Table 9.--Semifinished steel: 1/ U.S. Imports for consumption, by specified sources, 1988, 1989, and by specified periods, 1989 and 1990

Source	Unadjusted Initial Period Ceiling 2/	Quantity (short tons)			
		1988	1989	1989	January--April 1990
VRA countries:					
Australia	127,438	79,402	68,747	36,003	36,526
Austria	3/	73	0	0	0
Brazil	987,102	721,813	666,882	245,035	301,435
Czechoslovakia	4/	0	0	0	0
East Germany	820,785	1,192,072	944,846	278,919	277,818
EC Countries	17,280	3,259	34,551	0	0
Finland	3/	0	0	0	0
Hungary	95,038	79,206	87,185	35,091	5,951
Japan	259,195	63,916	77,158	5,017	89,420
Mexico	3/	0	5	5	12
Peoples Rep of China	3/	353	293	267	0
Poland	3/	0	0	0	0
Romania	3/	0	0	0	0
Republic of South Africa	3/	0	7	0	0
Korea, Republic of	292,675	57,445	66,033	27,421	17
Trinidad and Tobago	24,250	3,058	0	0	0
Venezuela	74,519	49,663	48,482	0	0
Yugoslavia	3/	0	0	0	0
Total	6/	2,250,240	1,994,189	627,758	711,179
Other countries:					
Canada	6/	103,838	119,773	29,045	38,568
Sweden	6/	306,050	71,223	45,725	5,034
Norway	6/	64,585	5,877	5,877	0
Soviet Union	6/	47,078	5,860	0	0
Argentina	6/	22,820	855	62	63
Switzerland	6/	0	31	1	231
Taiwan	6/	0	0	0	22
Israel	6/	0	0	0	0
Indonesia	6/	4,154	0	0	0
New Zealand	6/	46,214	0	0	0
Total	6/	594,739	203,619	80,710	43,918
Grand total	6/	2,844,979	2,197,808	708,468	755,097

1/ Semifinished steel includes ingots, blooms, billets, slabs, and sheet bars.

2/ Restraint level applicable to 15-month period ending December 31, 1990.

3/ No explicit semifinished steel provisions.

4/ Ceiling level unknown because country's voluntary restraint arrangement not yet made public.

5/ The United States did not renew its voluntary restraint agreement with South Africa. See preface and notes for explanation.

6/ Not applicable.

--Source: Compiled from official statistics of the U.S. Department of Commerce.

Table 10.--Carbon and certain alloy 1/ semifinished steel: U.S. imports for consumption, by specified sources, 1988, 1989, and by specified periods, 1989 and 1990

Item	1988	1989	January--April	
			1989	1990
Quantity (short tons)				
VRA countries:				
Australia -----	79,402	68,747	36,003	36,526
Austria -----	0	0	0	0
Brazil -----	720,130	666,882	245,035	301,435
Czechoslovakia -----	0	0	0	0
East Germany -----	0	0	0	0
EC countries -----	1,181,448	930,852	271,281	276,494
Finland -----	3,239	34,551	0	0
Hungary -----	0	0	0	0
Japan -----	77,271	86,487	34,827	5,825
Mexico -----	63,916	76,982	5,017	89,230
Peoples Rep of China -----	0	5	5	12
Poland -----	279	0	0	0
Romania -----	0	0	0	0
Republic of South Africa -----	0	7	0	0
Korea, Republic of -----	57,445	66,033	27,421	17
Trinidad and Tobago -----	3,058	0	0	0
Venezuela -----	49,663	48,482	0	0
Yugoslavia -----	0	0	0	0
Total-----	2,235,851	1,979,028	619,589	709,539
Other countries:				
Canada -----	70,310	83,218	14,671	29,142
Sweden -----	291,559	60,821	42,799	2/
Norway -----	64,585	5,877	5,877	0
Soviet Union -----	47,078	5,860	0	0
Argentina -----	22,820	855	62	63
Switzerland -----	2/	31	2/	231
New Zealand -----	46,214	0	0	0
Taiwan -----	0	0	0	21
Indonesia -----	4,154	0	0	0
Total-----	546,720	156,662	63,409	29,457
Grand total-----	2,782,571	2,135,690	682,998	738,996

See footnote(s) at end of table.

Table 10.--Carbon and certain alloy ^{1/} semifinished steel: U.S. imports for consumption, by specified sources, 1988, 1989, and by specified periods, 1989 and 1990--Continued

Item	1988	1989	January--April	
			1989	1990
Value (thousand dollars)				
VRA countries:				
Australia -----	15,165	14,426	6,307	7,783
Austria -----	0	0	0	0
Brazil -----	161,215	166,678	62,213	64,801
Czechoslovakia -----	0	0	0	0
East Germany -----	0	0	0	0
EC countries-----	290,884	244,360	72,781	66,483
Finland -----	770	10,811	0	0
Hungary -----	0	0	0	0
Japan -----	19,499	24,972	9,483	2,841
Mexico -----	17,342	19,722	1,726	18,965
Peoples Rep of China -----	0	7	7	12
Poland -----	69	0	0	0
Romania -----	0	0	0	0
Republic of South Africa -----	0	18	0	0
Korea, Republic of -----	14,573	16,133	6,641	23
Trinidad and Tobago -----	617	0	0	0
Venezuela -----	11,049	10,072	0	0
Yugoslavia -----	0	0	0	0
Total-----	531,183	507,199	159,158	160,908
Other countries:				
Canada -----	21,337	27,484	7,002	9,021
Sweden -----	73,544	15,249	10,805	8
Norway -----	14,757	1,288	1,288	0
Soviet Union -----	6,946	843	0	0
Argentina -----	6,147	336	21	22
Switzerland -----	3	155	8	255
New Zealand -----	13,489	0	0	0
Taiwan -----	0	0	0	25
Indonesia -----	1,196	0	0	0
Total-----	137,419	45,355	19,124	9,331
Grand total-----	668,602	552,554	178,282	170,239

^{1/} Certain alloy refers to alloy steel other than stainless or tool steel.

^{2/} Less than 0.5 short ton.

Source: Compiled from official statistics of the U.S. Department of Commerce.

Table 11.--Carbon and certain alloy 1/ steel plate: U.S. imports for consumption, by specified sources, 1988, 1989, and by specified periods, 1989 and 1990

Item	1988	1989	January--April	
			1989	1990
Quantity (short tons)				
VRA countries:				
Australia -----	5,935	4,634	999	1,532
Austria -----	21,426	5,851	835	415
Brazil -----	171,537	134,769	67,242	8,094
Czechoslovakia -----	16,455	17,274	0	0
East Germany -----	17,270	10,342	3,357	4,401
EC countries-----	515,974	521,489	144,585	134,677
Finland -----	96,135	108,885	35,666	40,955
Hungary -----	16,146	15,300	4,148	2,047
Japan -----	44,538	45,639	13,420	10,411
Mexico -----	20,867	26,919	3,280	12,594
Peoples Rep of China -----	26	0	0	0
Poland -----	30,860	28,960	12,043	1,754
Romania -----	68,325	35,438	4,642	1,652
Republic of South Africa -----	0	0	0	0
Korea, Republic of -----	68,405	46,109	18,778	9,269
Trinidad and Tobago -----	389	2,204	0	0
Venezuela -----	6,653	10,033	2,694	0
Yugoslavia -----	1,423	0	0	0
Total-----	1,102,364	1,013,846	311,689	227,801
Other countries:				
Canada -----	419,556	266,881	105,053	82,321
Sweden -----	110,743	78,601	21,980	29,347
India -----	34,780	53,828	23,985	11,017
New Zealand -----	3,849	5,544	2,787	2,177
Indonesia -----	84,969	267	203	0
Argentina -----	44,564	233	233	0
Turkey -----	5,946	193	168	0
Peru -----	0	2/	2/	0
Switzerland -----	86	0	0	0
Israel -----	1,729	0	0	0
All others-----	48,503	0	0	17
Total-----	754,725	405,547	154,409	124,879
Grand total-----	1,857,089	1,419,393	466,098	352,680

See footnote(s) at end of table.

Table 11.--Carbon and certain alloy 1/ steel plate: U.S. imports for consumption, by specified sources, 1988, 1989, and by specified periods, 1989 and 1990--Continued

Item	1988	1989	January--April	
			1989	1990
Value (thousand dollars)				
VRA countries:				
Australia -----	3,190	2,371	444	705
Austria -----	8,467	2,465	575	347
Brazil -----	67,413	44,586	20,224	2,756
Czechoslovakia -----	5,280	5,498	0	0
East Germany -----	5,566	3,312	1,143	1,304
EC countries -----	219,700	215,157	63,500	54,289
Finland -----	38,528	39,347	12,774	13,803
Hungary -----	4,494	4,847	1,315	640
Japan -----	27,120	27,889	8,159	7,302
Mexico -----	8,122	10,816	1,446	4,180
Peoples Rep of China -----	28	0	0	0
Poland -----	9,971	9,915	4,126	601
Romania -----	22,680	11,827	1,719	531
Republic of South Africa -----	0	0	0	0
Korea, Republic of -----	28,496	17,725	7,298	3,384
Trinidad and Tobago -----	122	630	0	0
Venezuela -----	2,062	3,172	912	0
Yugoslavia -----	461	0	0	0
Total-----	451,700	399,557	123,635	89,842
Other countries:				
Canada -----	175,573	109,513	44,959	31,637
Sweden -----	52,247	39,192	11,586	13,630
India -----	14,024	17,706	6,991	3,793
New Zealand -----	1,350	1,671	870	568
Indonesia -----	25,597	125	57	0
Argentina -----	14,038	81	81	0
Turkey -----	2,186	88	77	0
Peru -----	0	6	6	0
Switzerland -----	38	0	0	0
Israel -----	754	0	0	0
All others-----	14,161	0	0	11
Total-----	299,968	168,382	64,627	49,639
Grand total-----	751,668	567,939	188,262	139,481

1/ Certain alloy refers to alloy steel other than stainless or tool steel.

2/ Less than 0.5 short ton.

Source: Compiled from official statistics of the U.S. Department of Commerce.

Table 12.--Carbon and certain alloy 1/ steel sheet and strip: U.S. imports for consumption, by specified sources, 1988, 1989, and by specified periods, 1989 and 1990

Item	1988	1989	January--April	
			1989	1990
Quantity (short tons)				
VRA countries:				
Australia -----	169,338	173,844	72,426	26,967
Austria -----	80,141	44,936	4,600	9,468
Brazil -----	279,788	374,903	134,819	32,855
Czechoslovakia -----	0	10	0	0
East Germany -----	50,830	26,330	9,907	9,844
EC countries-----	2,249,090	1,968,270	475,933	379,214
Finland -----	85,164	56,876	22,429	35,516
Hungary -----	13,211	11,903	3,551	1,284
Japan -----	2,209,538	2,050,376	674,278	595,607
Mexico -----	139,529	117,694	25,271	54,375
Peoples Rep of China -----	0	456	18	84
Poland -----	11,005	0	0	0
Romania -----	6,731	52	52	0
Republic of South Africa -----	0	0	0	0
Korea, Republic of -----	487,380	375,727	100,334	220,210
Trinidad and Tobago -----	63	0	0	0
Venezuela -----	57,246	59,756	12,360	10,328
Yugoslavia -----	0	32	5	52
Total-----	5,839,054	5,261,165	1,535,983	1,375,804
Other countries:				
Canada -----	856,040	858,289	303,647	278,711
New Zealand -----	29,118	61,556	25,060	29,020
Taiwan -----	78,901	48,988	14,413	33,123
Argentina -----	243,388	27,348	1,823	7,876
Sweden -----	51,007	21,448	9,433	7,152
Norway -----	14,466	20,341	4,726	5,379
United Arab Emirates -----	0	2,078	2,078	0
Jamamica -----	0	538	0	185
Indonesia -----	20,138	368	160	0
Costa Rica -----	0	287	0	66
All others-----	53,269	438	25	6,763
Total-----	1,346,327	1,041,679	361,365	368,275
Grand total-----	7,185,381	6,302,844	1,897,348	1,744,079

See footnote(s) at end of table.

Table 12.--Carbon and certain alloy 1/ steel sheet and strip: U.S. imports for consumption, by specified sources, 1988, 1989, and by specified periods, 1989 and 1990--Continued

Item	1988	1989	January--April	
			1989	1990
Value (thousand dollars)				
VRA countries:				
Australia -----	90,392	96,817	35,757	15,921
Austria -----	31,089	18,681	2,156	3,984
Brazil -----	111,040	149,482	54,480	13,304
Czechoslovakia -----	0	3	0	0
East Germany -----	18,100	9,790	3,506	3,557
EC countries-----	1,045,288	951,315	241,456	191,771
Finland -----	32,525	22,393	9,481	10,305
Hungary -----	3,751	3,739	1,134	409
Japan -----	1,211,321	1,198,546	384,594	360,776
Mexico -----	77,632	69,852	15,125	33,037
Peoples Rep of China -----	0	211	7	137
Poland -----	5,049	0	0	0
Romania -----	2,176	36	36	0
Republic of South Africa -----	0	0	0	0
Korea, Republic of -----	209,663	163,713	40,300	96,355
Trinidad and Tobago -----	19	0	0	0
Venezuela -----	22,121	26,436	5,063	5,582
Yugoslavia -----	0	17	3	43
Total-----	2,860,166	2,711,031	793,098	735,181
Other countries:				
Canada -----	381,804	403,293	144,566	129,501
New Zealand -----	11,315	27,435	10,541	12,524
Taiwan -----	31,494	22,887	6,248	17,418
Argentina -----	92,033	14,390	727	3,169
Sweden -----	39,376	28,193	12,335	7,874
Norway -----	7,909	12,185	3,247	3,259
United Arab Emirates -----	0	926	926	0
Jamamica -----	0	378	0	136
Indonesia -----	7,569	215	76	0
Costa Rica -----	0	228	0	56
All others-----	21,590	528	15	2,491
Total-----	593,090	510,658	178,681	176,428
Grand total-----	3,453,256	3,221,689	971,779	911,609

1/ Certain alloy refers to alloy steel other than stainless or tool steel.

Source: Compiled from official statistics of the U.S. Department of Commerce.

Table 13.--Carbon and certain alloy $\frac{1}{2}$ steel bars and light shapes: U.S. imports for consumption, by specified sources, 1988, 1989, and by specified periods, 1989 and 1990

Item	1988	1989	January--April	
			1989	1990
Quantity (short tons)				
VRA countries:				
Australia -----	826	1,433	36	0
Austria -----	693	541	243	151
Brazil -----	96,561	50,035	22,810	21,625
Czechoslovakia -----	0	0	0	0
East Germany -----	0	0	0	0
EC countries-----	260,337	323,125	87,073	58,056
Finland -----	4,081	4,080	1,764	1,423
Hungary -----	146	0	0	0
Japan -----	107,959	131,880	44,483	28,705
Mexico -----	22,813	16,066	2,504	2,770
Peoples Rep of China -----	3,441	3,916	773	1,385
Poland -----	1,282	2,648	1,294	897
Romania -----	29	0	0	0
Republic of South Africa -----	0	0	0	0
Korea, Republic of -----	74,249	62,652	29,883	18,249
Trinidad and Tobago -----	15,404	16,501	9,189	14,027
Venezuela -----	19,962	10,391	3,192	10,246
Yugoslavia -----	0	0	0	0
Total-----	607,783	623,268	203,244	157,534
Other countries:				
Canada -----	429,634	398,631	155,008	114,923
Turkey -----	102,560	109,153	49,711	10,048
Argentina -----	50,982	48,289	12,504	7,683
Norway -----	36,346	30,234	11,995	0
Singapore -----	19,311	20,159	6,237	1,861
Taiwan -----	32,265	11,752	9,286	141
India -----	11,249	10,492	2,545	5,153
Sweden -----	9,099	3,385	1,780	1,517
Indonesia -----	54,015	3,133	1,222	0
Dominican Republic -----	0	3,112	0	0
All others-----	7,867	2,699	1,280	520
Total-----	753,328	641,039	251,568	141,846
Grand total-----	1,361,111	1,264,307	454,812	299,380

See footnote(s) at end of table.

Table 13.--Carbon and certain alloy ^{1/} steel bars and light shapes: U.S. imports for consumption, by specified sources, 1988, 1989, and by specified periods, 1989 and 1990--Continued

Item	1988	1989	January--April	
			1989	1990
Value (thousand dollars)				
VRA countries:				
Australia -----	332	669	11	0
Austria -----	667	1,024	431	358
Brazil -----	29,058	22,335	8,689	8,045
Czechoslovakia -----	0	0	0	0
East Germany -----	0	0	0	0
EC countries -----	133,388	169,448	45,634	33,367
Finland -----	2,705	3,241	1,294	1,552
Hungary -----	63	0	0	0
Japan -----	49,339	73,081	24,585	18,396
Mexico -----	8,588	5,814	989	1,206
Peoples Rep of China -----	1,314	1,526	272	721
Poland -----	845	1,517	702	549
Romania -----	103	0	0	0
Republic of South Africa -----	0	0	0	0
Korea, Republic of -----	20,439	19,087	8,709	6,044
Trinidad and Tobago -----	3,968	5,232	2,975	3,815
Venezuela -----	5,392	3,868	972	2,768
Yugoslavia -----	0	0	0	0
Total-----	256,201	306,842	95,263	76,821
Other countries:				
Canada -----	186,448	173,249	66,935	51,104
Turkey -----	28,951	32,827	15,255	4,394
Argentina -----	16,442	18,563	4,987	2,862
Norway -----	8,963	8,213	3,268	0
Singapore -----	5,104	7,950	2,595	536
Taiwan -----	10,022	4,724	3,680	71
India -----	3,952	4,650	1,095	2,534
Sweden -----	5,737	3,160	1,490	2,485
Indonesia -----	14,691	862	339	0
Dominican Republic -----	0	821	0	0
All others -----	2,726	1,257	491	340
Total-----	283,036	256,276	100,135	64,326
Grand total-----	539,237	563,118	195,398	141,147

^{1/} Certain alloy refers to alloy steel other than stainless or tool steel.

Source: Compiled from official statistics of the U.S. Department of Commerce.

Table 14.--Carbon and certain alloy 1/₂ steel wire rod: U.S. imports for consumption, by specified sources, 1988, 1989, and by specified periods, 1989 and 1990

Item	1988	1989	January--April	
			1989	1990
Quantity (short tons)				
VRA countries:				
Australia -----	9,551	10,783	6,216	3,859
Austria -----	601	1,108	1,108	0
Brazil -----	58,383	57,858	24,124	16,770
Czechoslovakia -----	13,661	2,197	0	0
East Germany -----	16,306	12,583	4,352	3,229
EC countries-----	290,286	212,925	76,058	61,947
Finland -----	2,237	108	108	0
Hungary -----	0	67	67	0
Japan -----	276,003	201,891	72,230	60,063
Mexico -----	58,389	32,373	9,440	18,145
Peoples Rep of China -----	27	25	25	0
Poland -----	7,606	0	0	0
Romania -----	0	0	0	0
Republic of South Africa -----	0	0	0	0
Korea, Republic of -----	875	176	100	0
Trinidad and Tobago -----	11,312	29,203	0	14,042
Venezuela -----	8,916	2,065	335	3,646
Yugoslavia -----	0	0	0	0
Total-----	754,153	563,362	194,163	181,701
Other countries:				
Canada -----	360,096	400,938	143,643	149,338
Turkey -----	126,791	75,596	0	27,871
Indonesia -----	84,414	29,923	10,705	0
Singapore -----	81,904	29,776	10,100	5,197
Sweden -----	18,464	15,095	5,376	1,945
Taiwan -----	16,843	10,071	4,157	479
Egypt -----	11,114	3,157	23	0
Argentina -----	0	276	77	877
United Arab Emirates -----	0	179	0	0
India -----	0	22	22	0
All others-----	20,843	19	0	0
Total-----	720,469	565,052	174,103	185,707
Grand total-----	1,474,622	1,128,414	368,266	367,408

See footnote(s) at end of table.

Table 14.--Carbon and certain alloy 1/ steel wire rod: U.S. imports for consumption, by specified sources, 1988, 1989, and by specified periods, 1989 and 1990--Continued

Item	1988	1989	January--April	
			1989	1990
Value (thousand dollars)				
VRA countries:				
Australia -----	2,103	2,439	1,334	1,019
Austria -----	248	297	297	0
Brazil -----	16,380	16,652	6,598	4,622
Czechoslovakia -----	3,234	549	0	0
East Germany -----	3,547	3,014	1,060	778
EC countries -----	109,528	82,681	28,495	21,996
Finland -----	741	35	35	0
Hungary -----	0	30	30	0
Japan -----	124,039	96,067	33,652	28,148
Mexico -----	15,344	8,234	2,329	4,938
Peoples Rep of China -----	9	7	7	0
Poland -----	1,612	0	0	0
Romania -----	0	0	0	0
Republic of South Africa -----	0	0	0	0
Korea, Republic of -----	389	112	67	0
Trinidad and Tobago -----	3,293	8,770	0	4,027
Venezuela -----	2,000	594	88	950
Yugoslavia -----	0	0	0	0
Total-----	282,467	219,481	73,992	66,478
Other countries:				
Canada -----	130,836	145,073	51,416	52,936
Turkey -----	32,337	20,896	0	7,248
Indonesia -----	20,363	8,363	2,893	0
Singapore -----	21,983	9,390	2,948	1,678
Sweden -----	9,831	12,842	4,292	1,796
Taiwan -----	6,764	4,247	1,808	183
Egypt -----	2,650	920	7	0
Argentina -----	0	137	38	378
United Arab Emirates -----	0	149	0	0
India -----	0	11	11	0
All others-----	4,578	6	0	0
Total-----	229,342	202,034	63,413	64,219
Grand total-----	511,809	421,515	137,405	130,697

1/ Certain alloy refers to alloy steel other than stainless or tool steel.

Source: Compiled from official statistics of the U.S. Department of Commerce.

Table 15.--Carbon and certain alloy 1/ steel wire: U.S. imports for consumption, by specified sources, 1988, 1989, and by specified periods, 1989 and 1990

Item	1988	1989	January--April	
			1989	1990
Quantity (short tons)				
VRA countries:				
Australia -----	4,488	4,189	1,486	1,602
Austria -----	1,731	1,782	602	444
Brazil -----	14,128	9,397	5,084	3,478
Czechoslovakia -----	0	24	0	0
East Germany -----	0	0	0	0
EC countries -----	168,480	139,816	50,184	40,495
Finland -----	476	368	52	416
Hungary -----	0	0	0	0
Japan -----	78,468	67,924	23,836	23,382
Mexico -----	2,712	1,407	511	656
Peoples Rep of China -----	9,720	12,165	2,964	3,668
Poland -----	116	201	37	44
Romania -----	0	0	0	0
Republic of South Africa -----	0	0	0	0
Korea, Republic of -----	7,736	7,512	2,533	1,722
Trinidad and Tobago -----	1,060	0	0	0
Venezuela -----	5,996	5,906	830	1,937
Yugoslavia -----	3	0	0	0
Total -----	295,114	250,691	88,119	77,844
Other countries:				
Canada -----	193,243	183,779	68,300	59,462
Argentina -----	2,491	11,276	2,279	3,429
Sweden -----	7,532	7,601	2,494	2,544
India -----	4,108	5,266	1,708	2,427
Chile -----	2,146	3,630	655	383
Taiwan -----	4,897	3,548	929	1,950
Ecuador -----	1,430	2,134	812	60
Switzerland -----	2,591	1,653	854	335
Norway -----	1,312	1,328	255	864
Hong Kong -----	9	763	82	0
All others-----	4,856	1,315	351	342
Total -----	224,615	222,293	78,719	71,796
Grand total -----	519,729	472,984	166,838	149,640

See footnote(s) at end of table.

Table 15.--Carbon and certain alloy ^{1/} steel wire: U.S. imports for consumption, by specified sources, 1988, 1989, and by specified periods, 1989 and 1990--Continued

Item	1988	1989	January--April	
			1989	1990
Value (thousand dollars)				
VRA countries:				
Australia -----	2,018	1,844	679	669
Austria -----	2,584	2,976	936	899
Brazil -----	6,207	5,122	2,653	1,720
Czechoslovakia -----	0	16	0	0
East Germany -----	0	0	0	0
EC countries -----	141,210	126,019	46,121	38,918
Finland -----	231	198	14	251
Hungary -----	0	0	0	0
Japan -----	61,637	57,930	20,482	20,818
Mexico -----	1,320	914	306	410
Peoples Rep of China -----	4,165	5,530	1,300	1,677
Poland -----	59	129	18	32
Romania -----	0	0	0	0
Republic of South Africa -----	0	0	0	0
Korea, Republic of -----	4,667	4,890	1,567	1,175
Trinidad and Tobago -----	354	0	0	0
Venezuela -----	3,096	3,410	544	1,072
Yugoslavia -----	9	0	0	0
Total-----	227,557	208,978	74,620	67,641
Other countries:				
Canada -----	109,405	112,002	40,485	37,085
Argentina -----	1,245	5,051	1,063	1,549
Sweden -----	10,678	9,482	3,524	3,106
India -----	1,518	1,974	638	882
Chile -----	946	2,041	338	253
Taiwan -----	2,903	3,186	864	1,353
Ecuador -----	652	1,059	394	31
Switzerland -----	1,525	1,062	544	203
Norway -----	1,177	1,095	216	680
Hong Kong -----	2	346	40	0
All others-----	1,291	726	197	107
Total-----	131,342	138,024	48,303	45,249
Grand total-----	358,899	347,002	122,923	112,890

^{1/} Certain alloy refers to alloy steel other than stainless or tool steel.

Source: Compiled from official statistics of the U.S. Department of Commerce.

Table 16.--Carbon and certain alloy 1/ steel wire products: U.S. imports for consumption, by specified sources, 1988, 1989, and by specified periods, 1989 and 1990

Item	1988	1989	January--April	
			1989	1990
Quantity (short tons)				
VRA countries:				
Australia -----	5	20	0	2/
Austria -----	956	4,043	1,448	1,257
Brazil -----	15,018	10,401	4,060	4,527
Czechoslovakia -----	0	0	0	0
East Germany -----	0	0	0	0
EC countries-----	38,365	86,677	29,045	28,806
Finland -----	1	51	2/	2/
Hungary -----	0	42	0	0
Japan -----	23,536	52,650	14,965	19,875
Mexico -----	13,693	24,461	8,817	10,354
Peoples Rep of China -----	36,866	42,981	11,839	15,182
Poland -----	16,070	15,255	4,582	3,886
Romania -----	143	0	0	0
Republic of South Africa -----	1,550	730	246	0
Korea, Republic of -----	192,127	178,804	58,021	68,124
Trinidad and Tobago -----	94	0	0	252
Venezuela -----	1,352	16,639	4,378	3,893
Yugoslavia -----	7,314	5,961	2,016	2,240
Total-----	347,090	438,715	139,417	158,396
Other countries:				
Canada -----	98,251	114,763	37,430	39,283
Indonesia -----	18,621	27,489	7,219	11,376
Thailand -----	8,627	20,808	8,435	3,009
Taiwan -----	13,715	17,331	5,178	5,294
Argentina -----	18,002	16,702	6,100	4,316
United Arab Emirates -----	20,059	14,854	6,165	4,314
Turkey -----	23,631	10,713	3,597	5,942
Saudi Arabia -----	3,718	8,784	2,380	2,633
Chile -----	8,459	8,642	1,785	2,082
India -----	4,571	8,233	2,649	2,339
All others-----	7,707	16,568	4,121	6,686
Total-----	225,361	264,887	85,059	87,274
Grand total-----	572,451	703,602	224,476	245,670

See footnote(s) at end of table.

Table 16.--Carbon and certain alloy ¹/ _{steel wire products: U.S. imports for consumption, by specified sources, 1988, 1989, and by specified periods, 1989 and 1990--Continued}

Item	1988	1989	January--April	
			1989	1990
Value (thousand dollars)				
VRA countries:				
Australia -----	20	37	0	8
Austria -----	1,556	8,634	2,550	3,067
Brazil -----	7,169	6,038	2,286	2,343
Czechoslovakia -----	0	0	0	0
East Germany -----	0	0	0	0
EC countries-----	33,725	135,555	42,122	53,703
Finland -----	96	67	2	6
Hungary -----	0	23	0	0
Japan -----	28,992	97,473	27,124	36,132
Mexico -----	8,903	17,781	5,947	8,406
Peoples Rep of China -----	14,640	25,832	6,836	8,512
Poland -----	5,403	5,354	1,561	1,485
Romania -----	44	0	0	0
Republic of South Africa -----	792	558	225	0
Korea, Republic of -----	138,561	158,567	49,450	58,939
Trinidad and Tobago -----	27	0	0	99
Venezuela -----	387	5,224	1,329	1,372
Yugoslavia -----	3,027	2,456	844	812
Total-----	243,342	463,599	140,276	174,884
Other countries:				
Canada -----	70,198	93,747	30,018	31,968
Indonesia -----	6,881	11,595	3,423	4,937
Thailand -----	5,332	9,521	3,233	1,793
Taiwan -----	12,448	19,677	5,947	5,913
Argentina -----	7,943	8,930	3,062	2,344
United Arab Emirates -----	7,562	5,992	2,425	2,221
Turkey -----	8,700	5,485	1,882	3,115
Saudi Arabia -----	1,239	3,255	902	1,108
Chile -----	3,991	4,476	979	1,138
India -----	2,659	5,467	2,045	1,665
All others-----	6,778	21,186	6,405	7,957
Total-----	133,731	189,331	60,321	64,159
Grand total-----	377,073	652,930	200,597	239,043

¹/ Certain alloy refers to alloy steel other than stainless or tool steel.

²/ Less than 0.5 short ton.

Source: Compiled from official statistics of the U.S. Department of Commerce.

Table 17.--Carbon and certain alloy 1/ steel structural shapes and units: U.S. imports for consumption, by specified sources, 1988, 1989, and by specified periods, 1989 and 1990

Item	1988	1989	January--April	
			1989	1990
Quantity (short tons)				
VRA countries:				
Australia -----	139	312	155	0
Austria -----	1,541	684	242	117
Brazil -----	20,210	11,638	5,276	2,308
Czechoslovakia -----	0	0	0	0
East Germany -----	0	92	0	0
EC countries -----	903,438	790,065	270,661	151,138
Finland -----	118	2,669	417	0
Hungary -----	0	0	0	0
Japan -----	590,217	373,632	185,373	36,784
Mexico -----	24,912	17,588	4,307	10,276
Peoples Rep of China -----	208	874	179	410
Poland -----	14,059	20,441	4,315	3,818
Romania -----	19	168	48	16
Republic of South Africa -----	143	0	0	0
Korea, Republic of -----	169,302	81,616	46,033	1,428
Trinidad and Tobago -----	0	120	11	165
Venezuela -----	2/	112	2	84
Yugoslavia -----	263	0	0	0
Total-----	1,724,569	1,300,011	517,019	206,544
Other countries:				
Canada -----	338,187	249,815	92,548	96,296
Norway -----	64,361	31,897	10,492	2/
Argentina -----	27,523	30,494	12,586	3,449
New Zealand -----	8,242	8,945	2,759	978
Taiwan -----	9,020	6,899	2,931	2,164
Mauritius -----	0	4,723	0	0
Indonesia -----	4,074	3,269	3,251	45
India -----	459	1,743	272	241
Singapore -----	3,129	1,102	144	1,588
Sweden -----	3,925	991	590	489
All others -----	4,979	474	179	286
Total-----	463,899	340,352	125,752	105,536
Grand total-----	2,188,468	1,640,363	642,771	312,080

See footnote(s) at end of table.

Table 17.--Carbon and certain alloy $\frac{1}{2}$ steel structural shapes and units: U.S. imports for consumption, by specified sources, 1988, 1989, and by specified periods, 1989 and 1990--Continued

Item	1988	1989	January--April	
			1989	1990
Value (thousand dollars)				
VRA countries:				
Australia -----	135	902	533	0
Austria -----	1,865	1,780	757	596
Brazil -----	8,055	5,564	2,046	1,682
Czechoslovakia -----	0	0	0	0
East Germany -----	0	28	0	0
EC countries-----	356,905	308,492	106,941	59,566
Finland -----	248	4,129	475	0
Hungary -----	0	0	0	0
Japan -----	228,010	159,837	74,489	19,556
Mexico -----	11,585	8,817	2,186	8,212
Peoples Rep of China -----	154	669	132	299
Poland -----	3,587	6,446	1,249	1,060
Romania -----	11	73	21	7
Republic of South Africa -----	694	0	0	0
Korea, Republic of -----	84,018	43,704	18,534	1,151
Trinidad and Tobago -----	0	63	32	45
Venezuela -----	1	83	2	27
Yugoslavia -----	393	0	0	0
Total-----	695,661	540,587	207,397	92,201
Other countries:				
Canada -----	201,529	154,010	58,452	53,631
Norway -----	21,943	10,401	3,427	3
Argentina -----	7,274	10,137	3,638	1,346
New Zealand -----	8,814	10,505	3,147	1,183
Taiwan -----	5,476	6,383	2,645	1,949
Mauritius -----	0	1,521	0	0
Indonesia -----	1,173	971	951	20
India -----	371	1,195	157	205
Singapore -----	2,903	1,013	133	2,066
Sweden -----	5,413	2,805	1,610	1,030
All others-----	4,246	1,402	376	450
Total-----	259,142	200,343	74,536	61,883
Grand total-----	954,803	740,930	281,933	154,084

/ Certain alloy refers to alloy steel other than stainless or tool steel.

/ Less than 0.5 short ton.

Source: Compiled from official statistics of the U.S. Department of Commerce.

Table 18.--Carbon and certain alloy $\frac{1}{2}$ steel rails and related products: U.S. imports for consumption, by specified sources, 1988, 1989, and by specified periods, 1989 and 1990

Item	1988	1989	January--April	
			1989	1990
Quantity (short tons)				
VRA countries:				
Australia -----	2	3,567	1,146	1,044
Austria -----	703	5,805	1,596	787
Brazil -----	4,553	2,942	1,236	451
Czechoslovakia -----	0	0	0	0
East Germany -----	1	0	0	0
EC countries-----	52,358	53,518	27,796	18,058
Finland -----	3	0	0	2/
Hungary -----	4	0	0	4
Japan -----	79,347	83,624	42,290	34,868
Mexico -----	26	380	119	9
Peoples Rep of China -----	25	455	127	45
Poland -----	0	105	101	0
Romania -----	0	0	0	0
Republic of South Africa -----	2/	20	0	191
Korea, Republic of -----	6,919	6,670	2,998	1,149
Trinidad and Tobago -----	0	0	0	0
Venezuela -----	77	0	0	0
Yugoslavia -----	0	0	0	0
Total-----	144,018	157,086	77,409	56,606
Other countries:				
Canada -----	172,077	151,966	53,407	37,466
Soviet Union -----	0	9,875	0	0
Argentina -----	6	2,579	0	2
Sweden -----	3,064	876	239	272
Taiwan -----	128	417	189	87
Colombia -----	0	77	26	15
Chile -----	0	48	2/	12
Turkey -----	0	22	22	86
Israel -----	0	20	20	0
Honduras -----	2/	9	4	7
All others-----	140	11	1	19
Total-----	175,415	165,900	53,908	37,966
Grand total-----	319,433	322,986	131,317	94,572

See footnote(s) at end of table.

Table 18.--Carbon and certain alloy ^{1/} steel rails and related products: U.S. imports for consumption, by specified sources, 1988, 1989, and by specified periods, 1989 and 1990--Continued

Item	1988	1989	January--April	
			1989	1990
Value (thousand dollars)				
VRA countries:				
Australia -----	7	3,841	1,468	1,253
Austria -----	299	3,284	1,153	1,028
Brazil -----	3,751	2,544	1,015	391
Czechoslovakia -----	0	0	0	0
East Germany -----	5	0	0	0
EC countries -----	25,214	28,589	13,308	10,249
Finland -----	14	0	0	11
Hungary -----	25	0	0	9
Japan -----	38,835	46,028	22,015	19,340
Mexico -----	37	380	140	17
Peoples Rep of China -----	9	221	63	32
Poland -----	0	49	48	0
Romania -----	0	0	0	0
Republic of South Africa -----	1	14	0	144
Korea, Republic of -----	2,580	3,408	1,621	736
Trinidad and Tobago -----	0	0	0	0
Venezuela -----	24	0	0	0
Yugoslavia -----	0	0	0	0
Total -----	70,801	88,358	40,831	33,210
Other countries:				
Canada -----	50,140	59,757	23,726	7,926
Soviet Union -----	0	1,290	0	0
Argentina -----	17	803	0	10
Sweden -----	1,001	600	187	326
Taiwan -----	294	797	337	195
Colombia -----	0	258	84	50
Chile -----	0	25	2	6
Turkey -----	0	13	13	58
Israel -----	0	25	25	0
Honduras -----	2	4	2	4
All others-----	115	71	22	65
Total -----	51,569	63,643	24,398	8,640
Grand total -----	122,370	152,001	65,229	41,850

^{1/} Certain alloy refers to alloy steel other than stainless or tool steel.

^{2/} Less than 0.5 short ton.

Source: Compiled from official statistics of the U.S. Department of Commerce.

Table 19.--Carbon and certain alloy 1/₂ steel pipe and tube: U.S. imports for U.S. imports for consumption, by specified sources 1988, 1989, and by specified periods, 1989 and 1990

Item	1988	1989	January--April	
			1989	1990
Quantity (short tons)				
VRA countries:				
Australia -----	12,375	7,022	3,703	1,550
Austria -----	26,408	17,756	2,188	12,212
Brazil -----	87,724	64,098	28,237	29,047
Czechoslovakia -----	7,164	6,156	745	1,264
East Germany -----	7,828	6,520	3,309	878
EC countries-----	488,108	504,008	167,251	213,620
Finland -----	12,755	6,000	5,335	2,479
Hungary -----	585	1,109	1,072	0
Japan -----	790,770	507,942	145,178	153,538
Mexico -----	131,349	138,081	32,793	41,164
Peoples Rep of China -----	18,422	973	48	0
Poland -----	8,048	4,658	1,326	2,175
Romania -----	27,284	13,778	0	3,473
Republic of South Africa ----	0	0	0	0
Korea, Republic of -----	496,059	353,671	127,418	123,436
Trinidad and Tobago -----	0	0	0	0
Venezuela -----	19,510	20,192	4,840	18,911
Yugoslavia -----	3,732	2,226	0	2,928
Total-----	2,138,121	1,654,190	523,443	606,675
Other countries:				
Canada -----	436,372	451,459	160,378	143,181
Argentina -----	148,192	89,608	14,396	21,197
Taiwan -----	88,055	60,719	24,064	19,383
Thailand -----	148,259	34,384	23,681	0
Singapore -----	47,545	27,492	10,104	6,674
India -----	44,486	25,404	10,153	5,945
Sweden -----	26,842	21,424	7,711	6,689
Turkey -----	32,001	16,107	10,928	1,835
Algeria -----	21,502	9,430	4,769	1,228
Israel -----	12,714	9,397	2/	8,487
All others-----	105,850	35,930	15,767	6,482
Total-----	1,111,818	781,354	281,951	221,101
Grand total-----	3,249,939	2,435,544	805,394	827,776

See footnote(s) at end of table.

Table 19.--Carbon and certain alloy 1/ steel pipe and tube: U.S. imports for U.S. imports for consumption, by specified sources 1988, 1989, and by specified periods, 1989 and 1990--Continued

Item	1988	1989	January--April	
			1989	1990
Value (thousand dollars)				
VRA countries:				
Australia -----	4,959	3,151	1,668	1,111
Austria -----	23,494	13,811	2,338	5,672
Brazil -----	41,170	36,362	14,638	11,350
Czechoslovakia -----	3,472	2,779	424	489
East Germany -----	4,115	2,763	1,391	358
EC countries -----	346,165	330,377	113,044	127,109
Finland -----	5,624	2,987	2,544	1,263
Hungary -----	266	517	458	0
Japan -----	597,887	378,193	117,009	102,416
Mexico -----	71,872	74,372	18,098	20,813
Peoples Rep of China -----	7,066	360	32	0
Poland -----	3,115	2,105	561	950
Romania -----	11,018	5,411	0	1,291
Republic of South Africa -----	0	0	0	0
Korea, Republic of -----	239,742	176,982	63,100	59,919
Trinidad and Tobago -----	0	0	0	0
Venezuela -----	7,535	8,737	2,012	7,304
Yugoslavia -----	2,036	946	0	1,269
Total -----	1,369,536	1,039,853	337,317	341,314
Other countries:				
Canada -----	266,692	281,447	97,885	87,209
Argentina -----	76,641	51,423	7,454	12,726
Taiwan -----	39,591	28,827	11,662	9,003
Thailand -----	58,119	14,718	10,290	0
Singapore -----	19,833	13,215	5,077	3,034
India -----	20,173	11,846	4,537	2,176
Sweden -----	23,510	23,653	8,363	8,129
Turkey -----	14,568	6,678	4,402	829
Algeria -----	5,957	2,531	998	452
Israel -----	6,218	4,759	13	3,934
All others-----	48,029	17,951	8,115	4,027
Total -----	579,331	457,048	158,796	131,519
Grand total -----	1,948,867	1,496,901	496,113	472,833

1/ Certain alloy refers to alloy steel other than stainless or tool steel.

2/ Less than 0.5 short ton.

Source: Compiled from official statistics of the U.S. Department of Commerce.

Table 20. Total, carbon and certain 1/ alloy steel products: U.S. imports for consumption, by principal sources, 1988, 1989, and by specified periods, 1989 and 1990

Item	1988	1989	January--April	
			1989	1990
Quantity (short tons)				
VRA countries:				
Australia -----	282,061	274,550	122,171	73,080
Austria -----	134,200	82,507	12,861	24,850
Brazil -----	1,468,033	1,382,924	537,923	420,590
Czechoslovakia -----	37,280	25,660	745	1,264
East Germany -----	92,234	55,867	20,926	18,352
EC countries-----	6,147,884	5,530,746	1,599,869	1,362,506
Finland -----	204,209	213,588	65,772	80,791
Hungary -----	30,094	28,420	8,838	3,335
Japan -----	4,277,647	3,602,047	1,250,880	969,058
Mexico -----	478,207	451,951	92,059	239,573
Peoples Rep of China -----	68,735	61,850	15,979	20,785
Poland -----	89,325	72,268	23,699	12,574
Romania -----	102,530	49,436	4,742	5,140
Republic of South Africa -----	1,693	756	246	191
Korea, Republic of -----	1,560,497	1,178,972	413,519	443,604
Trinidad and Tobago -----	31,380	48,028	9,200	28,487
Venezuela -----	169,376	173,574	28,631	49,044
Yugoslavia -----	12,734	8,219	2,021	5,220
Total-----	15,188,119	13,241,363	4,210,081	3,758,444
Other countries:				
Canada -----	3,373,766	3,159,739	1,134,086	1,030,123
Argentina -----	557,969	227,661	50,060	48,893
Sweden -----	522,294	212,323	93,132	50,925
Turkey -----	307,985	211,804	64,446	45,782
Taiwan -----	243,886	159,725	61,147	62,642
India -----	99,714	104,994	41,340	27,129
Norway -----	181,502	90,181	33,455	6,611
Singapore -----	153,163	78,598	26,633	15,321
New Zealand -----	88,979	78,564	31,969	32,629
Indonesia -----	281,142	69,342	27,261	11,960
All others-----	512,272	191,835	66,718	41,827
Total-----	6,322,672	4,584,766	1,630,247	1,373,842
Grand total-----	21,510,791	17,826,129	5,840,328	5,132,286

See footnote(s) at end of table.

Table 20. Total, carbon and certain ^{1/} alloy steel products: U.S. imports for consumption, by principal sources, 1988, 1989, and by specified periods, 1989 and 1990--Continued

Item	1988	1989	January--April	
			1989	1990
Value (thousand dollars)				
VRA countries:				
Australia -----	118,320	126,499	48,201	28,470
Austria -----	70,268	52,952	11,193	15,951
Brazil -----	451,458	455,362	174,843	111,013
Czechoslovakia -----	11,986	8,844	424	489
East Germany -----	31,334	18,908	7,100	5,996
EC countries -----	2,702,007	2,591,992	773,403	657,450
Finland -----	81,482	83,209	26,619	27,190
Hungary -----	8,600	9,155	2,936	1,057
Japan -----	2,386,680	2,160,017	721,592	615,726
Mexico -----	220,745	216,702	48,291	100,184
Peoples Rep of China -----	27,385	34,364	8,657	11,391
Poland -----	29,711	25,514	8,265	4,677
Romania -----	36,033	17,347	1,776	1,829
Republic of South Africa -----	1,487	590	225	144
Korea, Republic of -----	743,129	604,322	197,286	227,726
Trinidad and Tobago -----	8,400	14,695	3,006	7,986
Venezuela -----	53,667	61,595	10,921	19,074
Yugoslavia -----	5,925	3,419	846	2,123
Total -----	6,988,617	6,485,486	2,045,584	1,838,476
Other countries:				
Canada -----	1,593,962	1,559,576	565,443	492,016
Argentina -----	221,780	109,850	21,072	24,406
Sweden -----	221,486	141,425	56,771	40,682
Turkey -----	93,038	65,996	21,637	15,643
Taiwan -----	109,041	90,727	33,192	36,111
India -----	42,731	42,851	15,476	11,276
Norway -----	55,371	33,914	11,613	4,489
Singapore -----	50,360	31,647	10,818	7,314
New Zealand -----	35,993	41,302	15,381	14,775
Indonesia -----	81,687	24,707	10,136	5,233
All others -----	192,526	89,098	30,794	23,444
Total -----	2,697,975	2,231,093	792,333	675,389
Grand total -----	9,686,592	8,716,579	2,837,917	2,513,865

^{1/} Certain alloy refers to alloy steel other than stainless or tool steel.

Source: Compiled from official statistics of the U.S. Department of Commerce.

Table 21.--Stainless semifinished steel: U.S. imports for consumption, by specified sources 1988, 1989, and by specified periods, 1989 and 1990

Item	1988	1989	January--April	
			1989	1990
Quantity (short tons)				
VRA countries:				
Australia -----	0	0	0	0
Austria -----	73	0	0	0
Brazil -----	1,683	0	0	0
Czechoslovakia -----	0	0	0	0
East Germany -----	0	0	0	0
EC countries-----	10,624	13,995	7,638	1,323
Finland -----	0	0	0	0
Hungary -----	0	0	0	0
Japan -----	1,935	698	264	126
Mexico -----	0	176	0	190
Peoples Rep of China -----	0	0	0	0
Poland -----	74	293	267	0
Romania -----	0	0	0	0
Republic of South Africa -----	0	0	0	0
Korea, Republic of -----	0	0	0	0
Trinidad and Tobago -----	0	0	0	0
Venezuela -----	0	0	0	0
Yugoslavia -----	0	0	0	0
Total-----	14,389	15,162	8,169	1,639
Other countries:				
Canada -----	33,527	36,556	14,374	9,426
Sweden -----	14,491	10,403	2,925	5,034
Taiwan -----	0	1/	1/	1/
Israel -----	0	1/	0	0
Total-----	48,018	46,959	17,299	14,460
Grand total-----	62,407	62,121	25,468	16,099

See footnote(s) at end of table.

Table 21.--Stainless semifinished steel: U.S. imports for consumption, by specified sources 1988, 1989, and by specified periods, 1989 and 1990--Continued

Item	1988	1989	January--April	
			1989	1990
Value (thousand dollars)				
VRA countries:				
Australia -----	0	0	0	0
Austria -----	234	0	0	0
Brazil -----	542	0	0	0
Czechoslovakia -----	0	0	0	0
East Germany -----	0	0	0	0
EC countries-----	13,120	12,572	5,386	1,785
Finland -----	0	0	0	0
Hungary -----	0	0	0	0
Japan -----	2,906	1,413	507	271
Mexico -----	0	448	0	421
Peoples Rep of China -----	0	0	0	0
Poland -----	102	532	473	0
Romania -----	0	0	0	0
Republic of South Africa -----	0	0	0	0
Korea, Republic of -----	0	0	0	0
Trinidad and Tobago -----	0	0	0	0
Venezuela -----	0	0	0	0
Yugoslavia -----	0	0	0	0
Total-----	16,904	14,965	6,366	2,477
Other countries:				
Canada -----	52,871	68,918	27,425	13,742
Sweden -----	23,240	23,075	6,611	8,257
Taiwan -----	0	16	7	8
Israel -----	0	5	0	0
Hong Kong -----	0	2	2	0
Total-----	76,111	92,016	34,045	22,007
Grand total-----	93,015	106,981	40,411	24,484

1/ Less than 0.5 short ton.

Source: Compiled from official statistics of the U.S. Department of Commerce.

Table 22.--Stainless steel plate: U.S. imports for consumption, by specified sources, 1988, 1989, and by specified periods, 1989 and 1990

Item	1988	1989	January--April	
			1989	1990
Quantity (short tons)				
VRA countries:				
Australia -----	0	0	0	0
Austria -----	249	197	86	31
Brazil -----	0	0	0	0
Czechoslovakia -----	0	0	0	0
East Germany -----	0	0	0	0
EC countries -----	7,364	12,024	4,676	3,349
Finland -----	2,730	1,746	700	2,403
Hungary -----	0	0	0	0
Japan -----	2,225	1,542	439	413
Mexico -----	0	4	4	0
Peoples Rep of China -----	0	0	0	0
Poland -----	0	0	0	0
Romania -----	0	0	0	0
Republic of South Africa -----	0	0	0	0
Korea, Republic of -----	125	10	5	82
Trinidad and Tobago -----	0	0	0	0
Venezuela -----	0	0	0	0
Yugoslavia -----	0	0	0	0
Total -----	12,693	15,523	5,910	6,278
Other countries:				
Sweden -----	2,779	2,014	672	445
Canada -----	371	177	136	19
Anguilla -----	5	0	0	0
Total -----	3,155	2,191	808	464
Grand total -----	15,848	17,714	6,718	6,742

Table 22.--Stainless steel plate: U.S. imports for consumption, by specified sources, 1988, 1989, and by specified periods, 1989 and 1990--Continued

Item	1988	1989	January--April	
			1989	1990
Value (thousand dollars)				
VRA countries:				
Australia -----	0	0	0	0
Austria -----	953	915	426	116
Brazil -----	0	0	0	0
Czechoslovakia -----	0	0	0	0
East Germany -----	0	0	0	0
EC countries -----	15,635	35,694	13,668	7,125
Finland -----	6,147	4,883	2,177	4,606
Hungary -----	0	0	0	0
Japan -----	4,514	4,544	1,192	1,103
Mexico -----	0	3	3	0
Peoples Rep of China -----	0	0	0	0
Poland -----	0	0	0	0
Romania -----	0	0	0	0
Republic of South Africa -----	0	0	0	0
Korea, Republic of -----	50	24	13	131
Trinidad and Tobago -----	0	0	0	0
Venezuela -----	0	0	0	0
Yugoslavia -----	0	0	0	0
Total-----	27,299	46,063	17,479	13,081
Other countries:				
Sweden -----	6,775	5,970	2,062	1,301
Canada -----	889	425	346	57
Anguilla -----	9	0	0	0
Total-----	7,673	6,395	2,408	1,358
Grand total-----	34,972	52,458	19,887	14,439

Source: Compiled from official statistics of the U.S. Department of Commerce.

Table 23.--Stainless steel sheet and strip: U.S. imports for consumption, by specified sources, 1988, 1989, and by specified periods, 1989 and 1990

Item	1988	1989	January--April	
			1989	1990
Quantity (short tons)				
VRA countries:				
Australia -----	0	9	0	0
Austria -----	29	16	8	0
Brazil -----	313	0	0	39
Czechoslovakia -----	0	0	0	0
East Germany -----	0	0	0	0
EC countries -----	60,758	63,478	19,092	15,821
Finland -----	6,045	1,376	723	2,933
Hungary -----	0	0	0	0
Japan -----	22,393	45,581	13,170	13,165
Mexico -----	8,814	14,968	3,617	5,576
Peoples Rep of China -----	0	0	0	0
Poland -----	0	0	0	0
Romania -----	0	0	0	0
Republic of South Africa -----	0	0	0	0
Korea, Republic of -----	7,845	6,875	1,964	2,046
Trinidad and Tobago -----	0	0	0	0
Venezuela -----	5	0	0	0
Yugoslavia -----	0	0	0	0
Total -----	106,202	132,303	38,574	39,580
Other countries:				
Sweden -----	8,433	5,978	2,625	2,308
Canada -----	3,838	2,234	1,207	785
Singapore -----	0	4	0	0
India -----	90	0	0	201
Honduras -----	19	0	0	0
Peru -----	2	0	0	0
Total -----	12,382	8,216	3,832	3,294
Grand total -----	118,584	140,519	42,406	42,874

Table 23.--Stainless steel sheet and strip: U.S. imports for consumption, by specified sources, 1988, 1989, and by specified periods, 1989 and 1990--Continued

Item	1988	1989	January--April	
			1989	1990
Value (thousand dollars)				
VRA countries:				
Australia -----	0	12	0	0
Austria -----	136	79	41	0
Brazil -----	480	0	0	58
Czechoslovakia -----	0	0	0	0
East Germany -----	0	0	0	0
EC countries -----	122,326	138,830	42,060	31,871
Finland -----	13,459	3,850	2,136	5,146
Hungary -----	0	0	0	0
Japan -----	50,112	95,498	27,308	27,702
Mexico -----	16,454	33,463	8,491	11,532
Peoples Rep of China -----	0	0	0	0
Poland -----	0	0	0	0
Romania -----	0	0	0	0
Republic of South Africa -----	0	0	0	0
Korea, Republic of -----	17,343	16,561	5,118	3,577
Trinidad and Tobago -----	0	0	0	0
Venezuela -----	21	0	0	0
Yugoslavia -----	0	0	0	0
Total-----	220,331	288,293	85,154	79,886
Other countries:				
Sweden -----	24,684	21,181	8,497	7,847
Canada -----	9,552	7,123	3,827	2,048
Singapore -----	0	17	0	0
India -----	172	0	0	483
Honduras -----	35	0	0	0
Peru -----	26	0	0	0
Total-----	34,469	28,321	12,324	10,378
Grand total-----	254,800	316,614	97,478	90,264

Source: Compiled from official statistics of the U.S. Department of Commerce.

Table 24.--Stainless steel bars and shapes: U.S. imports for consumption, by specified sources, 1988, 1989, and by specified periods, 1989 and 1990

Item	1988	1989	January--April	
			1989	1990
Quantity (short tons)				
VRA countries:				
Australia -----	0	0	0	0
Austria -----	183	200	104	26
Brazil -----	3,827	4,497	1,787	1,068
Czechoslovakia -----	0	0	0	0
East Germany -----	0	0	0	0
EC countries-----	12,705	10,400	3,210	3,872
Finland -----	0	0	0	0
Hungary -----	0	0	0	0
Japan -----	16,715	20,286	5,253	5,571
Mexico -----	49	18	0	19
Peoples Rep of China -----	2	7	0	0
Poland -----	0	0	0	0
Romania -----	18	15	0	0
Republic of South Africa -----	0	0	0	0
Korea, Republic of -----	1,604	3,165	1,189	949
Trinidad and Tobago -----	0	0	0	0
Venezuela -----	0	0	0	0
Yugoslavia -----	0	0	0	0
Total-----	35,103	38,588	11,543	11,505
Other countries:				
Sweden -----	3,708	2,727	983	1,149
Canada -----	1,641	1,711	383	1,267
India -----	224	214	42	200
Argentina -----	0	93	49	14
Taiwan -----	49	59	8	0
Switzerland -----	1/	13	1/	11
Jordan -----	0	10	0	0
Indonesia -----	0	2	2	0
Singapore -----	0	1/	0	0
Israel -----	0	1/	0	0
All others-----	1/	0	0	0
Total-----	5,622	4,829	1,467	2,641
Grand total-----	40,725	43,417	13,010	14,146

See footnote(s) at end of table.

Table 24.--Stainless steel bars and shapes: U.S. imports for consumption, by specified sources, 1988, 1989, and by specified periods, 1989 and 1990--Continued

Item	1988	1989	January--April	
			1989	1990
Value (thousand dollars)				
VRA countries:				
Australia -----	0	0	0	0
Austria -----	412	527	261	74
Brazil -----	5,743	10,550	4,153	2,663
Czechoslovakia -----	0	0	0	0
East Germany -----	0	0	0	0
EC countries-----	29,888	30,443	9,045	10,498
Finland -----	0	0	0	0
Hungary -----	0	0	0	0
Japan -----	40,671	63,821	16,300	16,365
Mexico -----	163	33	0	39
Peoples Rep of China -----	40	32	0	0
Poland -----	0	0	0	0
Romania -----	30	27	0	0
Republic of South Africa -----	0	0	0	0
Korea, Republic of -----	3,389	9,017	3,365	2,419
Trinidad and Tobago -----	0	0	0	0
Venezuela -----	0	0	0	0
Yugoslavia -----	0	0	0	0
Total-----	80,336	114,450	33,124	32,058
Other countries:				
Sweden -----	8,981	8,819	3,152	3,268
Canada -----	3,608	4,540	1,156	3,086
India -----	420	509	92	550
Argentina -----	0	169	87	28
Taiwan -----	162	166	4	0
Switzerland -----	1	92	1	45
Jordan -----	0	41	0	0
Indonesia -----	0	53	53	0
Singapore -----	0	2	0	0
Israel -----	0	4	0	0
All others-----	3	0	0	0
Total-----	13,175	14,395	4,545	6,977
Grand total-----	93,511	128,845	37,669	39,035

1/ Less than 0.5 short ton.

Source: Compiled from official statistics of the U.S. Department of Commerce.

Table 25.--Stainless steel wire rod: U.S. imports for consumption, by specified sources, 1988, 1989, and by specified periods, 1989 and 1990

Item	1988	1989	January--April	
			1989	1990
Quantity (short tons)				
VRA countries:				
Australia -----	0	0	0	0
Austria -----	49	88	0	0
Brazil -----	964	809	0	375
Czechoslovakia -----	0	0	0	0
East Germany -----	0	0	0	0
EC countries -----	8,877	10,582	3,834	3,283
Finland -----	0	0	0	0
Hungary -----	0	0	0	0
Japan -----	5,483	6,087	1,834	1,656
Mexico -----	0	0	0	0
Peoples Rep of China -----	0	0	0	0
Poland -----	0	0	0	0
Romania -----	0	0	0	0
Republic of South Africa -----	0	0	0	0
Korea, Republic of -----	375	336	79	355
Trinidad and Tobago -----	138	0	0	0
Venezuela -----	0	0	0	0
Yugoslavia -----	17	0	0	0
Total -----	15,903	17,902	5,747	5,669
Other countries:				
Sweden -----	3,159	3,497	1,177	1,583
Canada -----	1/	284	75	82
Argentina -----	0	15	0	0
Taiwan -----	148	0	0	0
India -----	0	0	0	11
Total -----	3,307	3,796	1,252	1,676
Grand total -----	19,210	21,698	6,999	7,345

See footnote(s) at end of table.

Table 25.--Stainless steel wire rod: U.S. imports for consumption, by specified sources, 1988, 1989, and by specified periods, 1989 and 1990--Continued

Item	1988	1989	January--April	
			1989	1990
Value (thousand dollars)				
VRA countries:				
Australia -----	0	0	0	0
Austria -----	68	129	0	0
Brazil -----	1,543	1,991	0	683
Czechoslovakia -----	0	0	0	0
East Germany -----	0	0	0	0
EC countries-----	23,039	30,861	11,863	8,459
Finland -----	0	0	0	0
Hungary -----	0	0	0	0
Japan -----	11,611	16,226	4,907	3,925
Mexico -----	0	0	0	0
Peoples Rep of China -----	0	0	0	0
Poland -----	0	0	0	0
Romania -----	0	0	0	0
Republic of South Africa -----	0	0	0	0
Korea, Republic of -----	552	796	203	802
Trinidad and Tobago -----	202	0	0	0
Venezuela -----	0	0	0	0
Yugoslavia -----	22	0	0	0
Total-----	37,037	50,003	16,973	13,869
Other countries:				
Sweden -----	7,916	11,170	3,969	4,403
Canada -----	2	787	215	238
Argentina -----	0	26	0	0
Taiwan -----	328	0	0	0
India -----	0	0	0	30
Total-----	8,246	11,983	4,184	4,671
Grand total-----	45,283	61,986	21,157	18,540

1/ Less than 0.5 short ton.

Source: Compiled from official statistics of the U.S. Department of Commerce.

Table 26.--Stainless steel wire: U.S. imports for consumption, by specified sources, 1988, 1989, and by specified periods, 1989 and 1990

Item	1988	1989	January--April	
			1989	1990
Quantity (short tons)				
VRA countries:				
Australia -----	1/	1/	1/	1/
Austria -----	25	105	6	1/
Brazil -----	156	849	217	27
Czechoslovakia -----	0	0	0	0
East Germany -----	0	0	0	0
EC countries -----	8,101	7,542	3,036	1,881
Finland -----	0	7	7	0
Hungary -----	0	0	0	0
Japan -----	4,719	4,796	1,837	1,281
Mexico -----	1	6	0	0
Peoples Rep of China -----	0	0	0	0
Poland -----	0	0	0	0
Romania -----	0	0	0	0
Republic of South Africa -----	0	0	0	0
Korea, Republic of -----	986	759	313	200
Trinidad and Tobago -----	0	0	0	0
Venezuela -----	3	0	0	0
Yugoslavia -----	0	3	0	0
Total -----	13,991	14,067	5,416	3,389
Other countries:				
Sweden -----	2,685	2,493	1,074	649
Canada -----	2,277	2,355	747	864
Taiwan -----	1,221	1,099	454	283
India -----	209	896	360	580
Switzerland -----	268	337	155	76
Thailand -----	0	71	0	83
Singapore -----	1/	1/	0	1/
Hong Kong -----	0	1/	1/	0
Total -----	6,660	7,251	2,790	2,535
Grand total -----	20,651	21,318	8,206	5,924

See footnote(s) at end of table.

Table 26.--Stainless steel wire: U.S. imports for consumption, by specified sources, 1988, 1989, and by specified periods, 1989 and 1990--Continued

Item	1988	1989	January--April	
			1989	1990
Value (thousand dollars)				
VRA countries:				
Australia -----	39	81	25	33
Austria -----	117	516	33	4
Brazil -----	304	2,069	554	115
Czechoslovakia -----	0	0	0	0
East Germany -----	0	0	0	0
EC countries -----	24,922	28,620	11,669	7,307
Finland -----	0	58	58	0
Hungary -----	0	0	0	0
Japan -----	18,705	20,748	7,412	5,232
Mexico -----	6	3	0	0
Peoples Rep of China -----	0	0	0	0
Poland -----	0	0	0	0
Romania -----	0	0	0	0
Republic of South Africa -----	0	0	0	0
Korea, Republic of -----	3,044	3,042	1,170	790
Trinidad and Tobago -----	0	0	0	0
Venezuela -----	11	0	0	0
Yugoslavia -----	0	4	0	0
Total-----	47,148	55,141	20,921	13,481
Other countries:				
Sweden -----	12,922	13,952	5,807	3,631
Canada -----	9,650	12,604	3,948	4,366
Taiwan -----	3,824	3,834	1,538	1,063
India -----	414	2,432	817	1,493
Switzerland -----	1,254	1,590	700	336
Thailand -----	0	274	0	280
Singapore -----	5	9	0	6
Hong Kong -----	0	4	4	0
Total-----	28,069	34,699	12,814	11,175
Grand total-----	75,217	89,840	33,735	24,656

1/ Less than 0.5 short ton.

Source: Compiled from official statistics of the U.S. Department of Commerce.

Table 27.--Stainless steel pipe and tube: U.S. imports for consumption, by specified sources, 1988, 1989, and by specified periods, 1989 and 1990

Item	1988	1989	January--April	
			1989	1990
Quantity (short tons)				
VRA countries:				
Australia -----	23	0	0	0
Austria -----	756	664	304	238
Brazil -----	0	12	0	0
Czechoslovakia -----	0	0	0	0
East Germany -----	0	0	0	0
EC countries-----	7,081	11,955	4,564	7,913
Finland -----	1/	0	0	0
Hungary -----	0	0	0	0
Japan -----	8,365	9,327	3,302	2,268
Mexico -----	950	346	163	87
Peoples Rep of China -----	0	4	4	0
Poland -----	0	0	0	0
Romania -----	0	0	0	0
Republic of South Africa -----	0	1/	1/	0
Korea, Republic of -----	392	684	175	338
Trinidad and Tobago -----	0	0	0	0
Venezuela -----	0	0	0	0
Yugoslavia -----	0	0	0	0
Total-----	17,567	22,992	8,512	10,844
Other countries:				
Canada -----	6,925	6,241	2,668	2,173
Sweden -----	5,253	4,208	1,448	1,027
Taiwan -----	6,809	3,135	849	2,444
Thailand -----	188	332	151	0
Singapore -----	0	315	0	305
Switzerland -----	1	16	5	4
Malaysia -----	0	13	4	0
India -----	4	5	5	41
Norway -----	0	1/	1/	0
Israel -----	4	1/	1/	0
All others-----	1/	0	0	1/
Total-----	19,184	14,265	5,130	5,994
Grand total-----	36,751	37,257	13,642	16,838

See footnote(s) at end of table.

Table 27.--Stainless steel pipe and tube: U.S. imports for consumption, by specified sources, 1988, 1989, and by specified periods, 1989 and 1990--Continued

Item	1988	1989	January--April	
			1989	1990
Value (thousand dollars)				
VRA countries:				
Australia -----	135	0	0	0
Austria -----	4,157	5,246	2,388	1,660
Brazil -----	0	54	0	0
Czechoslovakia -----	0	0	0	0
East Germany -----	0	0	0	0
EC countries -----	27,461	45,286	20,867	13,370
Finland -----	1	0	0	0
Hungary -----	0	0	0	0
Japan -----	31,923	52,918	17,482	14,259
Mexico -----	2,891	1,195	502	347
Peoples Rep of China -----	0	12	12	0
Poland -----	0	0	0	0
Romania -----	0	0	0	0
Republic of South Africa -----	0	4	4	0
Korea, Republic of -----	1,255	2,570	484	1,083
Trinidad and Tobago -----	0	0	0	0
Venezuela -----	0	0	0	0
Yugoslavia -----	0	0	0	0
Total-----	67,823	107,285	41,739	30,719
Other countries:				
Canada -----	24,048	30,786	11,958	10,618
Sweden -----	22,285	22,758	7,985	5,152
Taiwan -----	21,308	12,587	3,436	8,400
Thailand -----	458	874	316	0
Singapore -----	0	1,060	0	955
Switzerland -----	177	212	82	144
Malaysia -----	0	45	14	0
India -----	17	20	20	223
Norway -----	0	7	2	0
Israel -----	77	3	2	0
All others-----	2	0	0	1
Total-----	68,372	68,352	23,815	25,493
Grand total-----	136,195	175,637	65,554	56,212

✓ Less than 0.5 short ton.

Source: Compiled from official statistics of the U.S. Department of Commerce.

Table 28.--Alloy tool steel (all forms): U.S. imports for consumption, by specified sources, 1988, 1989, and by specified periods, 1989 and 1990

Item	1988	1989	January--April	
			1989	1990
Quantity (short tons)				
VRA countries:				
Australia -----	0	18	18	282
Austria -----	2,538	2,709	886	768
Brazil -----	1,920	2,052	890	593
Czechoslovakia -----	21	33	0	0
East Germany -----	4	0	0	2
EC countries -----	12,825	16,254	5,328	4,578
Finland -----	5	0	0	0
Hungary -----	0	0	0	0
Japan -----	4,416	5,543	1,658	1,203
Mexico -----	346	137	88	0
Peoples Rep of China -----	103	167	0	0
Poland -----	249	225	60	104
Romania -----	0	0	0	0
Republic of South Africa -----	0	0	0	0
Korea, Republic of -----	779	1,167	494	222
Trinidad and Tobago -----	0	0	0	0
Venezuela -----	0	68	0	56
Yugoslavia -----	0	0	0	0
Total-----	23,206	28,373	9,422	7,808
Other countries:				
Sweden -----	12,254	10,867	4,219	2,540
Canada -----	8,573	8,963	3,886	2,878
Argentina -----	42	98	32	42
Soviet Union -----	0	10	0	0
Israel -----	0	1/	0	0
India -----	19	1/	1/	22
Switzerland -----	1/	1/	0	0
Total-----	20,888	19,938	8,137	5,482
Grand total-----	44,094	48,311	17,559	13,290

See footnote(s) at end of table.

Table 28.--Alloy tool steel (all forms): U.S. imports for consumption, by specified sources, 1988, 1989, and by specified periods, 1989 and 1990--Continued

Item	1988	1989	January--April	
			1989	1990
Value (thousand dollars)				
VRA countries:				
Australia -----	0	41	41	635
Austria -----	6,561	7,507	2,226	2,420
Brazil -----	3,560	3,481	1,580	1,262
Czechoslovakia -----	33	46	0	0
East Germany -----	6	0	0	8
EC countries-----	23,213	31,615	9,578	11,250
Finland -----	15	0	0	0
Hungary -----	0	0	0	0
Japan -----	14,883	11,142	3,456	3,824
Mexico -----	434	183	122	0
Peoples Rep of China -----	149	219	0	0
Poland -----	468	567	115	352
Romania -----	0	0	0	0
Republic of South Africa -----	0	0	0	0
Korea, Republic of -----	1,303	1,979	602	475
Trinidad and Tobago -----	0	0	0	0
Venezuela -----	0	86	0	83
Yugoslavia -----	0	0	0	0
Total-----	50,625	56,866	17,720	20,309
Other countries:				
Sweden -----	30,589	30,000	10,972	6,511
Canada -----	12,019	12,883	4,821	4,372
Argentina -----	65	165	50	76
Soviet Union -----	0	8	0	0
Israel -----	0	10	0	0
India -----	16	4	4	53
Switzerland -----	2	1	0	0
Total-----	42,691	43,071	15,847	11,012
Grand total-----	93,316	99,937	33,567	31,321

1/ Less than 0.5 short ton.

Source: Compiled from official statistics of the U.S. Department of Commerce.

Table 29.--Total, stainless and alloy tool steel products: U.S. imports for consumption, by principal sources, 1988, 1989, and by specified periods, 1989 and 1990

Item	1988	1989	January--April	
			1989	1990
Quantity (short tons)				
VRA countries:				
Australia -----	24	28	19	282
Austria -----	3,901	3,979	1,394	1,063
Brazil -----	8,863	8,218	2,894	2,103
Czechoslovakia -----	21	33	0	0
East Germany -----	4	0	0	2
EC countries -----	128,336	146,230	51,377	42,022
Finland -----	8,780	3,128	1,431	5,335
Hungary -----	0	0	0	0
Japan -----	66,251	93,860	27,758	25,683
Mexico -----	10,160	15,654	3,872	5,872
Peoples Rep of China -----	106	178	4	0
Poland -----	323	518	327	104
Romania -----	18	15	0	0
Republic of South Africa -----	0	1/	1/	0
Korea, Republic of -----	12,105	12,998	4,220	4,192
Trinidad and Tobago -----	138	0	0	0
Venezuela -----	7	68	0	56
Yugoslavia -----	17	3	0	0
Total-----	239,054	284,925	93,296	86,714
Other countries:				
Canada -----	57,153	58,521	23,478	17,495
Sweden -----	52,761	42,184	15,123	14,735
Taiwan -----	8,227	4,294	1,311	2,728
India -----	546	1,116	408	1,054
Thailand -----	188	403	151	83
Switzerland -----	270	366	160	91
Singapore -----	1/	320	0	305
Argentina -----	42	206	81	57
Malaysia -----	0	13	4	0
Soviet Union -----	0	10	0	0
All others-----	31	14	2	0
Total-----	119,488	107,447	40,718	36,548
Grand total-----	358,542	392,372	134,014	123,262

See footnote(s) at end of table.

Table 29.--Total, stainless and alloy tool steel products: U.S. imports for consumption, by principal sources, 1988, 1989, and by specified periods, 1989 and 1990--Continued

Item	1988	1989	January--April	
			1989	1990
Value (thousand dollars)				
VRA countries:				
Australia -----	174	133	66	668
Austria -----	12,639	14,919	5,375	4,273
Brazil -----	12,173	18,144	6,286	4,782
Czechoslovakia -----	33	46	0	0
East Germany -----	6	0	0	8
EC countries-----	279,603	353,921	124,138	91,666
Finland -----	19,623	8,791	4,371	9,751
Hungary -----	0	0	0	0
Japan -----	175,325	266,312	78,564	72,680
Mexico -----	19,948	35,327	9,118	12,339
Peoples Rep of China -----	189	263	12	0
Poland -----	570	1,099	587	352
Romania -----	30	27	0	0
Republic of South Africa -----	0	4	4	0
Korea, Republic of -----	26,936	33,988	10,954	9,277
Trinidad and Tobago -----	202	0	0	0
Venezuela -----	32	86	0	83
Yugoslavia -----	22	4	0	0
Total-----	547,505	733,064	239,475	205,879
Other countries:				
Canada -----	112,639	138,065	53,695	38,528
Sweden -----	137,391	136,924	49,056	40,370
Taiwan -----	25,622	16,604	4,986	9,471
India -----	1,039	2,965	932	2,833
Thailand -----	458	1,148	316	280
Switzerland -----	1,434	1,895	783	526
Singapore -----	5	1,088	0	960
Argentina -----	65	360	137	104
Malaysia -----	0	45	14	0
Soviet Union -----	0	8	0	0
All others-----	152	129	62	1
Total-----	278,805	299,231	109,981	93,073
Grand total-----	826,310	1,032,295	349,456	298,952

1/ Less than 0.5 short tons

Source: Compiled from official statistics of the U.S. Department of Commerce.

Table 30.--Steel mill products and certain fabricated steel products: Unit value of U.S. imports for consumption, 1988, 1989, and by specified periods, 1989 and 1990
(Per short ton)

Item	1988		1989		January-April 1990	
Carbon and certain alloy 1/ steel:						
Semifinished 2/	240	259		261		230
Plate	405	400		404		395
Sheet and strip:						
Hot rolled	364	378		387		365
Cold rolled	509	546		560		564
Galvanized	552	587		567		599
Tin plate	567	613		593		620
Tin free	542	574		571		573
Other coated	590	616		597		649
Average, sheet and strip	481	511		512		523
Bar:						
Hot finished	406	454		446		475
Cold finished	598	658		633		696
Reinforcing	262	308		295		322
Light shapes	382	349		354		353
Average, bar	396	443		430		471
Wire rod	347	374		373		356
Wire	691	734		737		754
Wire products	659	928		894		973
Structural shapes and units:						
Heavy structurals	376	377		378		364
Fabricated structurals	939	1,129		1,066		1,320
Average, structurals	436	452		439		494
Rails and related products	383	471		497		443
Pipe and tube:						
Oil country tubular goods	750	743		783		676
Line pipe	529	563		570		513
Mechanical pipe	675	787		712		858
Structural pipe	507	563		569		551
Pressure tubing	793	1,021		841		1,258
Other (incl. standard)	687	520		503		510
Average, pipe and tube	600	613		618		571
Average, carbon and certain alloy 1/ steel	450	489		486		490

See footnotes at end of table.

Table 30.--Steel mill products and certain fabricated steel products: Unit value of U.S. imports for consumption, 1988, 1989, and by specified periods, 1989 and 1990
(Per short ton)

Item	1988		1989		January-April 1990	
	1988	1989	1989	1990	1989	1990
Stainless and alloy tool steel ¹ :						
Stainless steel:						
Semifinished ² /	1,490	1,722	1,587	1,521	1,587	1,521
Plate	2,207	2,962	2,961	2,142	2,961	2,142
Sheet and strip:						
Sheet	2,067	2,084	2,118	1,923	2,118	1,923
Strip	3,331	3,255	3,331	3,160	3,331	3,160
Average, sheet and strip:	2,149	2,253	2,299	2,105	2,299	2,105
Bars and shapes	2,296	2,968	2,895	2,760	2,895	2,760
Wire rod	2,357	2,857	3,022	2,524	3,022	2,524
Wire	3,652	4,214	4,111	4,161	4,111	4,161
Pipe and tube	3,706	4,714	4,804	3,338	4,804	3,338
Alloy tool steel (all forms):	2,116	2,069	1,911	2,357	1,911	2,357
Average, stainless and alloy steel	2,306	2,631	2,608	2,425	2,608	2,425

¹/ Including alloy steel other than stainless or tool steel.

²/ Semifinished steel includes ingots, blooms, billets, slabs, and steel bars.

Source: Compiled from data of the American Iron & Steel Institute, and official statistics of the U.S. Department of Commerce.

Table 31.-- Steel mill products and certain fabricated steel products: U.S. imports for consumption of specified products and imports as a percent of major product groupings, 1988, 1989, and by specified periods, 1989 and 1990

Item	January-April			
	1988	1989	1989	1990
Quantity (short tons)				
Carbon and certain alloy ^{3/} steel:				
Semifinished ^{2/}				
Ingots-----	103,282	25,863	14,018	7,410
Blooms and billets-----	581,907	504,638	224,677	141,309
Slabs and sheet bars-----	2,097,383	1,605,189	444,305	590,279
Total-----	2,782,572	2,135,690	683,000	738,998
Plate:				
Carbon-----	1,750,917	1,312,364	431,791	322,458
Alloy-----	106,172	107,032	34,310	30,222
Total-----	1,857,090	1,419,396	466,101	352,680
Sheet and strip:				
Hot rolled:				
Sheet-----	2,199,268	1,835,755	546,789	481,177
Strip-----	49,553	110,452	36,626	31,183
Cold rolled:				
Black plate-----	145,166	144,642	47,285	37,377
Electrical-----	64,684	85,328	30,785	21,174
Other sheet-----	2,011,242	1,701,183	478,051	407,117
Other strip-----	126,534	112,196	40,150	38,551
Galvanized-----	1,948,811	1,625,227	490,151	525,697
Tin plate-----	294,552	337,330	109,207	99,086
Tin free-----	97,460	114,902	36,694	33,917
Other coated-----	248,111	235,827	81,612	68,799
Total-----	7,185,380	6,302,844	1,897,351	1,744,078
Bar:				
Hot rolled:				
Carbon-----	476,951	525,944	163,419	117,375
Alloy-----	186,902	238,912	86,558	62,926
Cold rolled:				
Carbon-----	161,345	118,180	45,084	30,741
Alloy-----	52,093	46,608	17,505	12,923
Reinforcing-----	357,253	233,733	103,907	49,655
Light structural shapes-----	126,568	100,927	38,340	25,760
Total-----	1,361,113	1,264,305	454,813	299,380

See footnotes at end of table.

Table 31.-- Steel mill products and certain fabricated steel products: U.S. imports for consumption of specified products and imports as a percent of major product groupings, 1988, 1989, and by specified periods, 1989 and 1990--Continued

Item	1988	1989	January-April	
			1989	1990
Quantity (short tons)				
Wire rod and related products:				
Wire rod:				
Carbon-----	1,355,951	1,085,797	353,920	362,417
Alloy-----	118,672	42,620	14,349	4,990
Wire:				
Carbon-----	486,699	432,369	152,424	135,526
Alloy-----	33,028	40,615	14,412	14,116
Wire products:				
Nails-----	364,748	384,737	118,482	144,359
Barbed wire-----	15,538	12,440	4,492	5,772
Wire fencing-----	12,052	60,907	21,110	15,226
Bale ties-----	1,849	955	429	278
Wire strand-----	88,300	161,751	53,052	57,566
Wire rope-----	77,564	82,812	26,909	22,467
Milliners wire-----	12,400	0	0	1/
Total-----	2,566,801	2,305,004	759,579	762,718
Structurals:				
Heavy-----	1,955,762	1,477,782	585,991	269,754
Fabricated-----	232,705	162,579	56,782	42,326
Total-----	2,188,467	1,640,361	642,774	312,081
Rails and related products:				
Rails-----	260,006	244,236	97,921	86,297
Joint bars and tie plates-----	8,487	14,023	8,553	2,769
Track spikes-----	205	5,853	2,841	1,072
Wheels and axles-----	50,734	58,873	22,002	4,434
Total-----	319,432	322,985	131,317	94,573
Pipes and tubes:				
Oil country tubular goods-----	1,032,296	429,448	130,263	99,306
Line pipe-----	507,914	526,983	136,511	240,394
Mechanical pipe-----	382,270	281,056	143,978	57,900
Structural pipe-----	278,870	323,918	120,385	102,157
Pressure tubing-----	52,100	44,944	21,256	11,984
Other (including standard)-----	996,487	829,195	253,001	316,035
Total-----	3,249,937	2,435,544	805,395	827,775

See footnotes at end of table.

Table 31.-- Steel mill products and certain fabricated steel products: U.S. imports for consumption of specified products and imports as a percent of major product groupings, 1988, 1989, and by specified periods, 1989 and 1990--Continued

Item	1988	1989	January-April	
			1989	1990
Quantity (short tons)				
Stainless and alloy tool steel:				
Stainless:				
Semifinished:				
Ingots-----	3,877	191	26	23
Blooms and billets-----	40,772	42,268	16,409	11,258
Slabs and sheet bars-----	17,758	19,663	9,032	4,818
Total-----	62,407	62,121	25,468	16,100
Plate-----	15,847	17,713	6,717	6,742
Sheet and strip:				
Sheet:				
Hot rolled-----	7,331	8,070	3,690	2,417
Cold rolled-----	103,577	112,191	32,390	34,136
Strip-----	7,676	20,258	6,328	6,321
Total-----	118,584	140,519	42,408	42,874
Bars and shapes-----	40,724	43,417	13,011	14,145
Wire rod-----	19,210	21,698	7,000	7,346
Wire-----	20,653	21,319	8,205	5,925
Pipe and tube-----	36,752	37,258	13,645	16,840
Alloy tool steel (all forms):				
Semifinished 2/-----	4,408	1,005	407	78
Bars-----	28,867	1,576	760	317
Other-----	10,820	45,732	16,393	12,894
Total-----	44,095	48,313	17,560	13,289

See footnotes at end of table.

Table 31.-- Steel mill products and certain fabricated steel products: U.S. imports for consumption of specified products and imports as a percent of major product groups, 1988, 1989, and by specified periods, 1989 and 1990

Item	1988	1989	January-April	
			1989	1990
Share of product group totals (percent)				
Carbon and certain alloy ^{3/} steel:				
Semifinished ^{2/}				
Ingots-----	3.71	1.21	2.05	1.00
Blooms and billets-----	20.91	23.63	32.90	19.12
Slabs and sheet bars-----	75.38	75.16	65.05	79.88
Total-----	100.00	100.00	100.00	100.00
Plate:				
Carbon-----	94.28	92.46	92.64	91.43
Alloy-----	5.72	7.54	7.36	8.57
Total-----	100.00	100.00	100.00	100.00
Sheet and strip:				
Hot rolled:				
Sheet-----	30.61	29.13	28.82	27.59
Strip-----	0.69	1.75	1.93	1.79
Cold rolled:				
Black plate-----	2.02	2.29	2.49	2.14
Electrical-----	0.90	1.35	1.62	1.21
Other sheet-----	27.99	26.99	25.20	23.34
Other strip-----	1.76	1.78	2.12	2.21
Galvanized-----	27.12	25.79	25.83	30.14
Tin plate-----	4.10	5.35	5.76	5.68
Tin free-----	1.36	1.82	1.93	1.94
Other coated-----	3.45	3.74	4.30	3.94
Total-----	100.00	100.00	100.00	100.00
Bar:				
Hot rolled:				
Carbon-----	35.04	41.60	35.93	39.21
Alloy-----	13.73	18.90	19.03	21.02
Cold rolled:				
Carbon-----	11.85	9.35	9.91	10.27
Alloy-----	3.83	3.69	3.85	4.32
Reinforcing-----	26.25	18.49	22.85	16.59
Light structural shapes-----	9.30	7.98	8.43	8.60
Total-----	100.00	100.00	100.00	100.00

See footnotes at end of table.

Table 31.-- Steel mill products and certain fabricated steel products: U.S. imports for consumption of specified products and imports as a percent of major product groupings, 1988, 1989, and by specified periods, 1989 and 1990--Continued

Item	1988	1989	January-April	
			1989	1990
Share of product group totals (percent)				
Wire rod and related products:				
Wire rod:				
Carbon-----	52.83	47.11	46.59	47.52
Alloy-----	4.62	1.85	1.89	0.65
Wire:				
Carbon-----	18.96	18.76	20.07	17.77
Alloy-----	1.29	1.76	1.90	1.85
Wire products:				
Nails-----	14.21	16.69	15.60	18.93
Barbed wire-----	0.61	0.54	0.59	0.76
Wire fencing-----	0.47	2.64	2.78	2.00
Bale ties-----	0.07	0.04	0.06	0.04
Wire strand-----	3.44	7.02	6.98	7.55
Wire rope-----	3.02	3.59	3.54	2.95
Milliners wire-----	0.48	0.00	0.00	1/
Total-----	100.00	100.00	100.00	100.00
Structurals:				
Heavy-----	89.37	90.09	91.17	86.44
Fabricated-----	10.63	9.91	8.83	13.56
Total-----	100.00	100.00	100.00	100.00
Rails and related products:				
Rails-----	81.40	75.62	74.57	91.25
Joint bars and tie plates-----	2.66	4.34	6.51	2.93
Track spikes-----	0.06	1.81	2.16	1.13
Wheels and axles-----	15.88	18.23	16.76	4.69
Total-----	100.00	100.00	100.00	100.00
Pipes and tubes:				
Oil country tubular goods-----	31.76	17.63	16.17	12.00
Line pipe-----	15.63	21.64	16.95	29.04
Mechanical pipe-----	11.76	11.54	17.88	6.99
Structural pipe-----	8.58	13.30	14.95	12.34
Pressure tubing-----	1.60	1.85	2.64	1.45
Other (including standard)-----	30.66	34.05	31.41	38.18
Total-----	100.00	100.00	100.00	100.00

See footnotes at end of table.

Table 31.-- Steel mill products and certain fabricated steel products: U.S. imports for consumption of specified products and imports as a percent of major product groupings, 1988, 1989, and by specified periods, 1989 and 1990--Continued

Item	1988	1989	January-April	
			1989	1990
Share of product group totals (percent)				
Stainless and alloy tool steel:				
Stainless:				
Semifinished:				
Ingots-----	6.21	0.31	0.10	0.15
Blooms and billets-----	65.33	68.04	64.43	69.93
Slabs and sheet bars-----	28.45	31.65	35.46	29.93
Total-----	100.00	100.00	100.00	100.00
Plate-----	100.00	100.00	100.00	100.00
Sheet and strip:				
Sheet:				
Hot rolled-----	6.18	5.74	8.70	5.64
Cold rolled-----	87.34	79.84	76.38	79.62
Strip-----	6.47	14.42	14.92	14.74
Total-----	100.00	100.00	100.00	100.00
Bars and shapes-----	100.00	100.00	100.00	100.00
Wire rod-----	100.00	100.00	99.99	100.01
Wire-----	100.00	100.00	100.00	100.00
Pipe and tube-----	100.00	100.00	100.00	100.00
Alloy tool steel (all forms):				
Semifinished 2/-----	10.00	2.08	2.32	0.59
Bars-----	65.47	3.26	4.33	2.39
Other-----	24.54	94.66	93.35	97.03
Total-----	100.00	100.00	100.00	100.00

1/ Milliners wire is included in total wire products.

2/ Semifinished steel includes ingots, blooms, billets, slabs, and sheet bars.

3/ Certain alloy refers to alloy steel other than stainless or tool steel.

Source: Compiled from official statistics of the U.S. Department of Commerce.

Table 32.--Steel mill products and certain fabricated steel products:
U.S. imports for consumption, by customs areas, 1988, 1989, and by
specified periods, 1989 and 1990

(Short tons)

Item	1988		1989		January-April 1990	
Atlantic Coast	4,743,215	3,510,909	1,505,115	1,038,927		
Great Lakes-Canadian border	6,342,613	5,688,226	1,390,931	1,210,249		
Gulf Coast-Mexican border	5,938,464	4,561,954	1,628,047	1,458,306		
Off-shore	403,506	371,695	155,895	89,456		
Pacific Coast	4,441,267	6,085,702	1,294,353	1,458,605		
Total	21,869,065	18,218,486	5,974,362	5,255,544		

Source: Compiled from official statistics of the U.S. Department of Commerce.

Table 33.--Steel mill products and certain fabricated steel products: U.S. imports, for consumption through the Atlantic Coast customs area, 1988, 1989, and by specified periods, 1989 and 1990
(Short tons)

Item	1988		1989		January-April 1990	
Carbon and certain alloy 1/ steel:						
Semifinished 2/	471,964	323,401	157,982	80,153		
Plate	331,537	216,546	92,554	64,693		
Sheet and strip	1,771,637	1,281,884	558,181	421,944		
Bars and certain shapes	220,708	155,134	71,415	41,928		
Wire rod	297,606	215,013	89,124	63,458		
Wire	108,857	88,009	31,437	26,566		
Wire products	220,011	237,679	81,602	80,938		
Structural shapes and units	602,240	458,130	212,325	61,917		
Rails and related products	36,885	35,669	15,873	12,388		
Pipe and tube	523,784	340,606	135,895	128,166		
Total	4,585,229	3,352,071	1,446,388	982,151		
Stainless and alloy tool steel:						
Stainless steel:						
Semifinished 2/	24,249	14,669	6,866	5,092		
Plate	6,134	8,900	3,787	4,017		
Sheet and strip	45,874	47,438	18,079	17,146		
Bars and certain shapes	22,371	22,418	7,326	5,932		
Wire rod	13,526	16,289	5,260	5,360		
Wire	10,593	11,848	4,473	3,017		
Pipe and tube	12,391	14,468	4,069	9,154		
Tool steel (all forms)	22,848	22,807	8,867	7,060		
Total	157,986	158,838	58,726	56,777		
Grand Total	4,743,215	3,510,909	1,505,115	1,038,927		

1/ Certain alloy refers to alloy steel other than stainless or tool steel.

2/ Semifinished steel includes ingots, blooms, billets, slabs, and steel bars.

Source: Compiled from official statistics of the U.S. Department of Commerce.

Table 34. --Steel mill products and certain fabricated steel products: U.S. imports, for consumption through the Great Lakes-Canadian border customs area, 1988, 1989, and by specified periods, 1989 and 1990

(Short tons)

Item	1988		1989		January-April 1990	
Carbon and certain alloy 1/ steel:						
Semifinished 2/						
Plate	414,978	393,604	73,812	30,997		
Sheet and strip	723,681	551,017	116,857	97,477		
Bars and certain shapes	2,396,464	2,145,556	385,046	372,389		
Wire rod	625,771	650,140	185,214	132,028		
Wire	545,070	466,968	149,656	152,774		
Wire products	253,271	230,319	87,119	73,279		
Structural shapes and units	83,750	106,485	33,176	36,670		
Rails and related products	522,423	375,682	99,045	109,720		
Pipe and tube	179,981	161,932	54,605	29,783		
Total	488,579	492,836	169,944	145,278		
	6,233,970	5,574,539	1,354,674	1,180,394		
Stainless and alloy tool steel:						
Stainless steel:						
Semifinished 2/						
Plate	34,966	36,980	14,798	9,428		
Sheet and strip	3,246	2,652	8,056	1,177		
Bars and certain shapes	33,923	35,682	8,805	6,799		
Wire rod	4,098	4,337	197	2,633		
Wire	661	822	197	443		
Wire products	6,053	5,832	2,189	1,697		
Pipe and tube	7,833	7,190	2,864	2,508		
Tool steel (all forms)	17,864	20,192	6,896	5,168		
Total	108,644	113,688	36,458	29,853		
Grand Total	6,342,613	5,688,226	1,390,931	1,210,249		

1/ Certain alloy refers to alloy steel other than stainless or tool steel.

2/ Semifinished steel includes ingots, blooms, billets, slabs, and steel bars.

Source: Compiled from official statistics of the U.S. Department of Commerce.

Table 35. --Steel mill products and certain fabricated steel products: U.S. Imports, for consumption through the Gulf Coast-Mexican border customs area, 1988, 1989, and by specified periods, 1989 and 1990
(Short tons)

Item	January-April		
	1988	1989	1990
Carbon and certain alloy 1/ steel:			
Semifinished 2/			
Plate	1,061,770	684,289	247,075
Sheet and strip	567,614	439,139	166,246
Bars and certain shapes	1,558,244	1,316,891	495,410
Wire rod	137,056	157,610	71,432
Wire	349,946	220,248	69,418
Wire products	64,524	61,675	20,260
Structural shapes and units	105,823	138,125	42,038
Rails and related products	493,074	323,672	137,727
Pipe and tube	64,016	81,408	45,103
Total	1,493,874	1,070,870	311,439
	5,895,942	4,493,927	1,606,148
Stainless and alloy tool steel:			
Stainless steel:			
Semifinished 2/			
Plate	3,131	10,462	3,804
Sheet and strip	3,233	4,000	1,678
Bars and certain shapes	16,038	30,331	7,582
Wire rod	6,668	7,646	2,228
Wire	1,220	1,735	470
Pipe and tube	606	1,144	383
Tool steel (all forms)	10,896	11,123	5,430
Total	42,730	1,585	324
	42,523	68,027	21,899
Grand Total	5,938,464	4,561,954	1,628,047

1/ Certain alloy refers to alloy steel other than stainless or tool steel.
2/ Semifinished steel includes ingots, blooms, billets, slabs, and steel bars.

Source: Compiled from official statistics of the U.S. Department of Commerce.

Table 36.--Steel mill products and certain fabricated steel products: U.S. imports, for consumption through the Off-shore customs area, 1988, 1989, and by specified periods, 1989 and 1990
(Short tons)

Item	1988		1989		January-April 1990	
Carbon and certain alloy 1/ steel:						
Semifinished 2/	3/	0	0	0	0	0
Plate	13,906	7,984	7,984	2,897	1,430	1,430
Sheet and strip	72,445	77,155	77,155	22,559	29,956	29,956
Bars and certain shapes	157,820	169,928	169,928	60,620	38,037	38,037
Wire rod	16,953	5,174	5,174	5,038	5,009	5,009
Wire	14,739	11,407	11,407	4,438	3,810	3,810
Wire products	10,190	6,070	6,070	1,948	1,878	1,878
Structural shapes and units	21,786	28,269	28,269	15,340	2,811	2,811
Rails and related products	88	333	333	204	71	71
Pipe and tube	93,829	64,215	64,215	22,027	5,512	5,512
Total	401,758	370,534	370,534	155,131	89,415	89,415
Stainless and alloy tool steel:						
Stainless steel:						
Semifinished 2/	0	0	0	0	0	0
Plate	3/ 0	1	1	0	0	0
Sheet and strip	15	36	36	0	0	0
Bars and certain shapes	0	3/ 0	3/ 0	3/ 0	0	0
Wire rod	1,690	810	810	451	14	14
Pipe and tube	42	18	18	18	8	8
Tool steel (all forms)	0	295	295	295	19	19
Total	1,748	1,161	1,161	764	41	41
Grand Total	403,506	371,695	371,695	155,895	89,456	89,456

1/ Certain alloy refers to alloy steel other than stainless or tool steel.

2/ Semifinished steel includes ingots, blooms, billets, slabs, and steel bars.

3/ Less than 0.5 short tons.

Source: Compiled from official statistics of the U.S. Department of Commerce.

Table 37.--Steel mill products and certain fabricated steel products: U.S. Imports, for consumption through the Pacific Coast customs area, 1988, 1989, and by specified periods, 1989 and 1990
(Short tons)

Item	January-April		
	1988	1989	1990
Carbon and certain alloy 1/ steel:			
Semifinished 2/			
Plate	833,859	734,396	204,130
Sheet and strip	220,352	204,710	87,547
Bars and certain shapes	1,386,590	1,481,358	436,155
Wire rod	219,758	131,492	46,131
Wire	265,048	221,015	54,974
Wire products	78,336	81,573	23,582
Structural shapes and units	152,677	215,243	65,711
Rails and related products	548,943	456,608	178,331
Pipe and tube	38,461	43,644	15,531
Total	649,871	467,017	166,089
	4,393,893	4,035,056	1,278,187
Stainless and alloy tool steel:			
Semifinished 2/			
Plate	61	10	0
Sheet and strip	3,233	2,159	600
Bars and certain shapes	22,749	27,032	8,691
Wire rod	7,573	9,015	2,651
Wire	3,803	2,852	1,073
Pipe and tube	1,711	1,685	1,709
Tool steel (all forms)	5,590	4,459	1,264
Total	2,653	3,433	1,178
	47,373	50,646	16,166
Grand Total	4,441,267	4,085,702	1,294,353

1/ Certain alloy refers to alloy steel other than stainless or tool steel.

2/ Semifinished steel includes ingots, blooms, billets, slabs, and steel bars.

Source: Compiled from official statistics of the U.S. Department of Commerce.



Appendix A

Request Letter From the Honorable Dan Rostenkowski, Chairman
of the Committee on Ways and Means,
U.S. House of Representatives

ONE HUNDRED FIRST CONGRESS

DAN ROSTENKOWSKI, ILLINOIS, CHAIRMAN

SAM M. GIBBONS, FLORIDA
 J.J. PICKLE, TEXAS
 CHARLES B. RANGEL, NEW YORK
 FORTNEY PETE STARK, CALIFORNIA
 ANDY JACOBS, JR., INDIANA
 HAROLD FORD, TENNESSEE
 ED JENKINS, GEORGIA
 THOMAS J. DOWNEY, NEW YORK
 FRANK J. GUARINI, NEW JERSEY
 MARTY RUSSO, ILLINOIS
 DON J. PEASE, OHIO
 ROBERT T. MATSUI, CALIFORNIA
 BERYL ANTHONY, JR., ARKANSAS
 RONNIE G. FLIPPO, ALABAMA
 BYRON L. DORGAN, NORTH DAKOTA
 BARBARA B. KENNELLY, CONNECTICUT
 BRIAN J. DONNELLY, MASSACHUSETTS
 WILLIAM J. COYNE, PENNSYLVANIA
 MICHAEL A. ANDREWS, TEXAS
 SANDER M. LEVIN, MICHIGAN
 JIM MOODY, WISCONSIN
 BENJAMIN L. CARDIN, MARYLAND

BILL ARCHER, TEXAS
 GUY VANDER JAGT, MICHIGAN
 PHILIP M. CRANE, ILLINOIS
 BILL FRENZEL, MINNESOTA
 DICK SCHULZE, PENNSYLVANIA
 BILL GRADISON, OHIO
 WILLIAM M. THOMAS, CALIFORNIA
 RAYMOND J. McGRATH, NEW YORK
 HANK BROWN, COLORADO
 ROD CHANDLER, WASHINGTON
 E. CLAY SHAW, JR., FLORIDA
 DON SUNDOQUIST, TENNESSEE
 NANCY L. JOHNSON, CONNECTICUT

COMMITTEE ON WAYS AND MEANS

U.S. HOUSE OF REPRESENTATIVES
WASHINGTON, DC 20515

OFFICE OF THE CHAIRMAN
 99 DEC 6 11:07

November 27, 1989

ROBERT J. LEONARD, CHIEF COUNSEL AND STAFF DIRECTOR

PHILLIP D. MOSELEY, MINORITY CHIEF OF STAFF

DOCKET NUMBER
1541
Office of the Secretary Int'l Trade Commission

The Honorable Anne Brunsdale
 Chairman
 U.S. International Trade Commission
 500 E Street, S.W.
 Washington, D.C. 20436

Dear Madam Chairman:

The Committee on Ways and Means hereby requests the United States International Trade Commission to continue providing monthly monitoring reports on the status of the steel industry through the period ending March 31, 1992. These reports should generally follow the format of, and contain the same type of information as, the reports which the Commission has been providing under investigation no. 332-226. As you know, the purpose of these reports has been to provide the Committee with factual information for use in overseeing the implementation of the steel voluntary restraint (VRA) program. The original VRA program, and therefore our request for monthly reports, was for the period ending September 30, 1989.

In light of the fact that President Bush has authorized the negotiation of transitional VRA's for an additional two-and-one-half years, and the Congress enacted legislation to provide for the enforcement of VRA's until March 31, 1992, the Committee on Ways and Means would like to continue receiving the monthly steel reports for the duration of the transitional VRA's.

Thank you for your cooperation in this matter.

Sincerely yours,

Dan Rostenkowski
 Dan Rostenkowski
 Chairman

SECRETARY

DR/jn

99 DEC 6 11:39

RECEIVED

B-1

Appendix B

Notice of Continuation of Investigation No. 332-226 in the
Federal Register

the order, viz., a previous denial of entry, no longer existed.

This action is taken under the authority of section 337 of the Tariff Act of 1930 (19 U.S.C. 1337). The provisions of 19 CFR 211.57(b) with respect to serving notice on all former parties to Inv. No. 337-TA-278 and allowing a period of 30 days for the filing of answers were waived by the Commission in accordance with 19 CFR 201.4(b).

By order of the Commission.

Issued: December 28, 1989.

Kenneth R. Mason,
Secretary.

[FR Doc. 90-197 Filed 1-3-90; 8:45 am]
BILLING CODE 7030-02-01

[Investigation No. 701-TA-301
(Preliminary)]

Plastic Tubing Corrugators From Canada

Determination

On the basis of the record¹ developed in the subject investigation, the Commission determines,² pursuant to section 703(a) of the Tariff Act of 1930 (19 U.S.C. 1671b(a)), that there is no reasonable indication that an industry in the United States is materially injured, or is threatened with material injury, or the establishment of an industry in the United States is materially retarded, by reason of imports from Canada of plastic tubing corrugators, provided for in subheadings 8477.30.00 and 8477.40.00 of the Harmonized Tariff Schedule of the United States (formerly provided for in items 678.3535 and 678.3545 of the Tariff Schedules of the United States), that are alleged to be subsidized by the Government of Canada.

Background

On November 7, 1989, a petition was filed with the Commission and the Department of Commerce by Cullom Machine Tool & Die, Inc., Cleveland, TN, alleging that an industry in the United States is materially injured by reason of subsidized imports of plastic tubing corrugators and apparatus therefor from Canada. Accordingly, effective November 7, 1989, the Commission instituted preliminary countervailing duty investigation No. 701-TA-301 (Preliminary).

Notice of the institution of the Commission's investigation and of a

public conference to be held in connection therewith was given by posting copies of the notice in the Office of the Secretary, U.S. International Trade Commission, Washington, DC, and by publishing the notice in the Federal Register of November 15, 1989 (54 F.R. 47583). The conference was held in Washington, DC, on November 28, 1989, and all persons who requested the opportunity were permitted to appear in person or by counsel.

The Commission transmitted its determination in this investigation to the Secretary of Commerce on December 22, 1989. The views of the Commission are contained in USITC publication 2246 (December 1989), entitled "Plastic Tubing Corrugators from Canada: Determination of the Commission in Investigation No. 701-TA-301 (Preliminary) Under the Tariff Act of 1930, Together With the Information Obtained in the Investigation."

By order of the Commission.

Issued: December 28, 1989.

[FR Doc. 90-203 Filed 1-3-90; 8:45 am]
BILLING CODE 7030-02-01

[332-226]

Monthly Reports on the Status of the Steel Industry

AGENCY: United States International Trade Commission.

ACTION: Continuation of investigation and monthly reports.

FOR FURTHER INFORMATION CONTACT: Mr. Robert Mascola (202-252-1428), Minerals and Metals Division, U.S. International Trade Commission, Washington, DC 20436.

Background

As requested in a letter received on December 6, 1989, from the Chairman, Committee on Ways and Means, U.S. House of Representatives, the Commission will continue investigation No. 332-226, and will furnish to the Committee monthly reports on the status of the steel industry through March 31, 1992. This coincides with the President's program of transitional voluntary restraint agreements (VRAs).

As requested by the Committee, the reports will continue to follow the format of, and contain the same type of information as, the reports which the Commission has heretofore provided. The reports will provide historic and current year-to-date data for the industry as a whole on items such as production, employment, shipments, trade, and financial performance.

With respect to trade, information on imports of major carbon and specialty steel products (such as plate and wire) will be provided on a country-by-country basis or regional basis for each of the countries or regions subject to VRAs, and for other major suppliers. The data will show how imports of semifinished steel and other steel products relate to overall VRA limits.

In addition, information on market penetration in major products will be provided, as will information which will track imports into five major U.S. customs regions. Finally, the report will provide data on the unit values of imported steel.

Notice of institution of the investigation and of the initial series of reports was published in the Federal Register on April 23, 1988 (51 FR 15390).

Hearing impaired individuals are advised that information on this matter can be obtained by contacting our TDD terminal on (202) 252-1810

By order of the Commission.

Issued: December 28, 1989.

Kenneth R. Mason,
Secretary.

[FR Doc. 90-196 Filed 1-3-90; 8:45 am]
BILLING CODE 7030-02-01

[Investigation No. 337-TA-230]

Certain Wire Electrical Discharge Machining Apparatus and Components Thereof; Commission Decision Not To Review an Initial Determination Terminating Two Respondents on the Basis of a Consent Order; Issuance of Consent Order

AGENCY: U.S. International Trade Commission.

ACTION: Notice.

SUMMARY: Notice is hereby given that the U.S. International Trade Commission has determined not to review an initial determination (ID) (Order No. 8) issued by the presiding administrative law judge (ALJ) granting a joint motion for termination of the investigation with respect to respondents Maruka Machinery Co., Ltd. and Maruka Machinery Corporation of America.

FOR FURTHER INFORMATION CONTACT: Craig L. McKee, Esq., Office of the General Counsel, U.S. International Trade Commission, 500 E Street, SW, Washington, DC 20436, telephone 202-252-1117. Hearing-impaired individuals are advised that information on this matter can be obtained by contacting the Commission TDD terminal on 202-252-1810.

¹ The record is defined in § 207.2(h) of the Commission's Rules of Practice and Procedure (19 CFR 207.2(h)).

² Chairman Brunsdale and Vice Chairman Case dissenting.

Appendix C

Definitions of Certain Terms, and Descriptions of the Products
Subject to the Investigation

DEFINITIONS

1. Steel.--An alloy of iron and carbon which is malleable as first cast and which contains by weight 2 percent or less of carbon. Steel may contain other elements, but iron must predominate, by weight, over each of the other elements.

2. Carbon steel.--Steel, other than chromium, which contains by weight 2 percent or less of carbon, and in which none of the elements listed below meets or exceeds the quantity, by weight, respectively indicated:

- 1.65 percent of manganese, or
- 0.25 percent of phosphorus, or
- 0.35 percent of sulphur, or
- 0.60 percent of silicon, or
- 0.40 percent of copper, or
- 0.30 percent of aluminum, or
- 0.30 percent of chromium, or
- 0.30 percent of cobalt, or
- 0.40 percent of lead, or
- 0.30 percent of nickel, or
- 0.30 percent of tungsten, or
- 0.10 percent of any other metallic element.

3. Alloy steel.--Steel which contains any of the elements listed in definition 2 (above) in excess of its specified quantity.

(i) Stainless steel.--Any alloy steel which contains by weight 1.2 percent or less of carbon and 10.5 percent or more of chromium, with or without other elements.

(ii) Tool steel.--Alloy steel which contains the combinations of elements in the quantity, by weight, respectively indicated in Chapter XXII, subchapter III, section (viii) of the Harmonized Tariff Schedule of the United States (HTS).

4. Galvanized.--Steel which has been coated or plated with zinc.

5. Hot-rolled.--Steel which has been reduced to its final thickness by heating and rolling the product at elevated temperature (usually above 2,200° F).

6. Cold-rolled.--Steel which has been reduced to its final thickness by rolling the product without heating it immediately prior to the rolling operation.

7. Continuous casting.--The method of producing semifinished products in which molten steel flows evenly into a caster where it is rapidly cooled, causing it to solidify directly into semifinished products such as slabs and billets.

8. Short ton.--Two thousand (2,000) pounds.

Unlike the TSUSA system of classification, the HTS do not differentiate by dimension those steel products formerly referred to as blooms and billets, slabs and sheet bars, plate, sheet, and strip. Instead, these products are included in two larger categories: flat rolled and semifinished (described below). However, for purposes of comparability with previous Monthly Reports, and in the interest of providing useful information and coverage of the steel industry, this report will continue to designate such product categories (e.g. blooms and billets, slab and sheet bars, plate, hot-rolled and cold rolled sheet, and strip). A partial basis for classification are those definitions found in Federal Register Notice 52897, December 29, 1988.

9. Semifinished products include:

Continous cast products of solid section, not presented in coils, whether or not subjected to primary hot-rolling.

Other products of solid section which have not been further worked than subjected to primary hot-rolling or roughly shaped by forging, including blanks, angles, shapes, or sections.

For the purposes of this legislation semi-finished products are classified as follows:

(i) Ingots.--Castings resulting from the solidification of molten steel and having a columnar form suitable for working by rolling or forging. Ingots are included in AISI (American Iron and Steel Institute) product group No. 1A.

(A) Carbon and certain alloy ingots; provided for in items 7206.10.0000, 7206.90.0000, 7224.10.0090 of the Harmonized Tariff Schedules of the United States (HTS).

(ii) Blooms billets, slabs, and sheet bars.--Other continuous cast products solid cross section, which have not been further worked than subjected to primary hot-rolling or roughly shaped by forging including blanks for angles, shapes or sections. These products are not presented in coils and are included in AISI product group No. 1B.

(B) Carbon and certain alloy blooms and billets; provided for in items 7207.11.0000, 7207.12.0010, 7207.19.0030, 7207.19.0090, 7207.20.0025, 7207.20.75, 7207.20.0090, 7224.90.0040, 7224.90.0060 of the HTS.

(C) Carbon and certain alloy slabs and sheet bars; provided for in items 7207.12.0050, 7207.20.0045, 7224.90.0050 of the HTS.

(D) Stainless steel ingots; provided for in item 7218.10.0000 of the HTS.

(E) Stainless steel blooms and billets; provided for in items 7218.90.0010, 7218.90.0020, 7218.90.0030, 7218.90.0045, 7218.90.0055, 7218.90.0065, 7218.90.0070, 7218.90.0080, 7218.90.0090 of the HTS.

(F) Stainless steel slabs and sheet bars; provided for in item 7218.90.0035 of the HTS.

10. Flat-rolled products.--Rolled products of solid rectangular (other than square) cross section, whether perforated, corrugated, polished, or with a pattern derived from rolling, which do not conform to the definition of semifinished products above in the form of:

- coils of successively superimposed layers, or
- straight lengths, which if of a thickness less than 4.75 mm are of a width measuring at least 10 times the thickness or if of a thickness of 4.75 mm or more are of a width which exceeds 150 mm and measures at least twice the thickness. Also those products of a shape other than rectangular or square of a width of 600 mm or more, not elsewhere specified.

(i) Plates.--Flat rolled products with a thickness equal to or exceeding 4.75 mm. Plates are included in AISI product group No. 6

(A) Carbon plate; provided for in items 7208.11.0000, 7208.12.0000, 7208.21.1000, 7208.21.5000, 7208.22.1000, 7208.22.5000, 7208.31.0000, 7208.32.0000, 7208.33.1000, 7208.33.5000, 7208.41.0000, 7208.42.0000, 7208.43.0000, 7210.90.1000, 7211.11.0000, 7211.12.0000, 7211.21.0000, 7211.22.0045, 7211.22.0090 of the HTS.

(B) Alloy plate; provided for in items 7225.30.3000, 7225.40.1015, 7225.40.3000, 7225.50.6000, 7226.91.5000 of the HTS.

(C) Stainless steel plate; provided for in items 7219.11.0000, 7219.12.0000, 7219.12.0030, 7219.12.0060, 7219.12.0080, 7219.21.0000, 7219.22.0000, 7219.31.0010, 7220.11.0000 of the HTS.

(ii) Sheets and strip.--Flat rolled products less than 4.75 mm in thickness. Sheet has a width equal to or exceeding 600 mm; strip width is less than 600 mm (but at least 10 times the thickness). Sheets and strip are included in AISI product group Nos. 28, 29, 29A, 30, 31, 32, 33A, 33B, 34, 325, 36, and 37. For the purposes of this investigation, sheets and strip are classified as follows:

(A) Hot-rolled carbon and alloy sheet; provided for in items 7208.13.1000, 7208.13.5000, 7208.14.1000, 7208.14.5000, 7208.23.1000, 7208.23.5030, 7208.23.5090, 7208.24.1000, 7208.24.5030, 7208.24.5090, 7208.34.1000, 7208.34.5000, 7208.35.1000, 7208.35.5000, 7208.44.0000, 7208.45.0000, 7225.30.5030, 7225.40.5030, 7225.30.7000, 7225.40.7000, 7225.91.1030 of the HTS.

(B) Hot-rolled carbon and alloy strip; provided for in items 7211.19.1000, 7211.19.5000, 7211.29.1000, 7211.29.3000, 7211.29.5000, 7211.29.7030, 7211.29.7060, 7211.29.7090, 7226.91.3030, 7226.91.7000, 7226.91.8000 of the HTS.

(C) Cold-rolled carbon and alloy sheet and strip:

(a) Black plate; provided for in item 7209.24.1000 of the HTS.

(b) Electrical sheet and strip; provided for in items 7225.10.0000, 7226.10.1000, 7226.10.5030, 7226.10.5060 of the HTS.

(c) Other sheet; provided for in items 7209.11.0000, 7209.12.0030, 7209.12.0090, 7209.13.0030, 7209.13.0090, 7209.14.0030, 7209.14.0090, 7209.21.0000, 7209.22.0000, 7209.23.0000, 7209.24.5000, 7209.31.0000, 7209.32.0000, 7209.33.0000, 7209.34.0000, 7209.41.0000, 7209.42.0000, 7209.43.0000, 7209.44.0000, 7210.70.3000, 7225.50.1030, 7225.50.7000, 7225.50.8000 of the HTS.

(d) Other strip; provided for in items 7211.30.1030, 7211.30.1090, 7211.30.3000, 7211.30.5000, 7211.41.1000, 7211.41.3030, 7211.41.3090, 7211.41.5000, 7211.41.7030, 7211.41.7060, 7211.41.7090, 7211.49.1030, 7211.49.1090, 7211.49.3000, 7211.49.5030, 7211.49.5060, 7211.49.5090, 7212.40.1000, 7212.40.5000, 7226.92.1030, 7226.92.3030, 7226.92.5000, 7226.92.7000, 7226.92.8000, 7226.99.0000 of the HTS.

(D) Galvanized sheet and strip; provided for in items 7210.31.0000, 7210.39.0000, 7210.41.0000, 7210.49.0030, 7210.49.0090, 7210.70.6030, 7210.70.6060, 7212.21.0000, 7212.29.0000, 7212.30.1030, 7212.30.1090, 7212.30.3000, 7212.30.5000 of the HTS.

(E) Tin plate; provided for in items 7210.11.0000, 7210.12.0000, 7212.10.0000 of the HTS.

(F) Tin free; provided for in item 7210.50.0000 of the HTS.

(G) Other metallic coated; provided for in items 7210.20.0000, 7210.60.0000, 7210.70.6090, 7210.90.6000, 7210.90.90000, 7212.50.0000, 7212.60.0000 of the HTS.

(H) Stainless steel hot-rolled sheet; provided for in items 7219.13.0030, 7219.13.0060, 7219.14.0030, 7219.14.0060, 7219.23.0030, 7219.23.0060, 7219.24.0030, 7219.24.0060 of the HTS.

(I) Stainless steel cold-rolled sheet; provided for in items 7219.32.0015, 7219.32.0030, 7219.32.0045, 7219.32.0060, 7219.33.0015, 7219.33.0030, 7219.33.0045, 7219.33.0060, 7219.34.0010, 7219.34.0050, 7219.35.0010, 7219.35.0050 of the HTS.

(J) Stainless steel strip; provided for in items 7220.12.1000, 7220.12.5000, 7220.20.1000, 7220.20.6000, 7220.20.7000, 7220.20.8000, 7220.20.9000, 7220.90.0000 of the HTS.

11. Bars.-- Hot-rolled products whether or not in irregularly wound coils, which have a solid cross section along their length in the shape of circles, segments of circles, ovals, rectangles (including squares), triangles, or other convex polygons. Such products may

- have indentations, ribs, grooves or other deformations produced during the rolling process (reinforcing bars and rods);
- be twisted after rolling

For purposes of this investigation the term "bars" also includes hollow drill steel, which is a hollow product suitable for making mining drills or mining drill rods, of which the greatest external dimension of the cross-section exceeds 15 mm but does not exceed 52 mm, and of which the greatest internal dimension does not exceed one-half of the greatest external dimension. Bars and hollow drill steel are found in AISI product groups nos. 14, 14A, 15, and 16.

For the purposes of this investigation, bars and light structural shapes are classified as follows:

(i) Hot-rolled carbon bars; provided for in items 7213.390060, 7213.49.0060, 7213.50.0060, 7214.10.0000, 7214.30.0000, 7214.40.0010, 7214.40.0030, 7214.40.0050, 7214.50.0010, 7214.50.0030, 7214.50.0050, 7214.60.0010, 7214.60.0030, 7214.60.0050, 7215.90.1000 of the HTS, and included in AISI product group No. 14.

(ii) Hot-rolled alloy bars; provided for in items 7227.20.0000, 7227.90.6000, 7228.20.1000, 7228.30.8000, 7228.40.0000, 7228.60.6000, 7228.80.0000 of the HTS, and included in AISI product group No. 14.

(iii) Cold-formed carbon bars; provided for in items 7215.10.0000, 7215.20.0000, 7215.30.0000, 7215.40.0000 7215.90.3000, 7215.90.5000 of the HTS, and included in AISI product group No. 16.

(iv) Cold-formed alloy bars; provided for in items 7228.20.5000, 7228.50.5000, 7228.60.8000 of the HTS, and included in AISI product group No. 16.

(v) Reinforcing carbon and certain alloy steel bars; which are hot-rolled steel bars, of solid cross section, having deformations of various patterns on their surfaces; provided for in items 7213.10.0000, 7214.20.0000 of the HTS, and included in AISI product group No. 15.

(vi) Light structural shapes; which are bar-size light shapes having a cross-sectional dimension of less than 7.62 cm provided for in items 7216.10.0010, 7216.10.0050, 7216.21.0000, 7216.22,0000, 7228.70.3060, 7228.70.3080 of the HTS, and included in AISI product group No. 14A.

(vii) Stainless steel bars and shapes; provided for in items 7221.00.0060, 7221.00.0080, 7222.10.0000, 7222.20.0030, 7222.20.0060, 7222.30.0000, 7222.40.3060, 7222.40.3080 of the HTS.

12. Wire rod and related products include:

(i) Wire rods.--Coiled, semifinished, hot-rolled products of solid cross section, approximately round in cross section, not under 14mm nor over 19mm in diameter. Wire rods are included in AISI product group No. 3.

For the purposes of this investigation, wire rod is classified as follows:

(A) Carbon steel wire rod; provided for in items 7213.31.3000, 7213.31.6000, 7213.39.0030, 7213.39.0090, 7213.41.3000, 7213.41.6000, 7213.49.0030, 7213.49.0090, 7213.50.0020, 7213.50.0040, 7213.50.0080 of the HTS.

(B) Alloy steel wire rod; provided for in items 7227.90.1030, 7227.90.2030, 7228.30.2000, 7228.50.1010, 7228.60.1030 of the HTS.

(C) Stainless steel wire rod; provided for in items 7221.00.0020, 7221.00.0040 of the HTS.

(ii) Steel wire.--Cold-formed products in coils, of any uniform solid cross section along their whole length, which do not conform to the definition of flat-rolled products. Steel wire is included in AISI product group No. 23.

For the purpose of this legislation, steel wire is classified as follows:

(A) Carbon steel wire; provided for in items 7217.11.1000, 7217.11.2000, 7217.11.3000, 7217.11.5020, 7217.11.5040, 7217.11.5060, 7217.11.5080, 7217.11.7030, 7217.11.7090, 7217.11.9000, 7217.12.1000, 7217.12.3030, 7217.12.3060, 7217.12.5000, 7217.12.7000, 7217.13.1000, 7217.13.3030, 7217.13.3060, 7217.13.5000, 7217.13.7000, 7217.19.5000, 7217.21.1000, 7217.21.3015, 7217.21.3030, 7217.21.3045, 7217.21.3060, 7217.21.3075, 7217.21.3090, 7217.21.5000, 7217.22.1015, 7217.22.1030, 7217.22.1050, 7217.22.5000, 7217.23.1015, 7217.23.1030, 7217.23.1050, 7217.23.5000, 7217.29.5000, 7217.31.1000, 7217.31.3015, 7217.31.3030, 7217.31.3045, 7217.31.3060, 7217.31.3075, 7217.31.3090, 7217.31.5000, 7217.32.1015, 7217.32.1030, 7217.32.1050, 7217.32.5000, 7217.33.1015, 7217.33.1030, 7217.33.1050, 7217.33.5000, 7217.39.5000 of the HTS.

(B) Alloy steel wire; provided for in items 7229.20.0000, 7229.90.1000, 7229.90.5015, 7229.90.5030, 7229.90.5050, 7229.90.9000 of the HTS.

(C) Stainless steel wire; provided for in items 7223.00.1015, 7223.00.1030, 7223.00.1045, 7223.00.1060, 7223.00.1075, 7223.00.5000, 7223.00.9000 of the HTS.

(iii) Carbon and certain alloy steel wire products as defined by the following:

(A) Nails and brads, spikes, staples, and tacks are fasteners, of one piece construction, made of round wire, and not including thumb tacks, staples in strip form, corrugated fasteners, glaziers' points, hook nails, ring nails, or fasteners suitable for use in power-actuated hand tools; as provided for in items 7317.00.1000, 7317.00.5505, 7317.00.5510, 7317.00.5520, 7317.00.5530, 7317.00.5540, 7317.00.5550, 7317.00.5560, 7317.00.5570, 7317.00.5580, 7317.00.5590, 7317.00.7500, 8305.20.0000 of the HTS. Nails and staples, are included in AISI product group No. 51 (pt.).

(B) Barbed wire is a wire, or strand of twisted wires, armed with barbs or sharp points; as provided for in item 7313.00.0000 of the HTS. Barbed wire is included in AISI product group No. 52.

(C) Wire expanded metal, grill and fencing include whether or not galvanized wholly of round wire with a maximum cross-sectional diameter of 3 mm or more, having a mesh size of 100 cm³ or more, whether or not such wire is covered with plastics; as provided for in items 7314.20.0000, 7314.30.1000, 7314.30.5000, 7314.41.0000, 7314.42.0000, 7314.49.3000, 7314.49.6000, 7314.50.0000 of the HTS. The products are included in AISI product group No. 50.

(D) Baling wire and ties, with or without buckles or fastenings and whether or not coated with paint or other substance; as provided for in item 7326.20.0010 of the HTS and included in AISI product group No. 53.

(E) Wire strand is two or more wires which together constitute one of the parts which are twisted together to form rope, cord, or cordage, suitable for fencing purposes, not fitted with fittings, not made up into articles, not of brass plated wire, not covered with nonmetallic material, as provided for in items 7312.10.1030, 7312.10.1050, 7312.10.1060, 7312.10.1070, 7312.10.3005, 7312.10.3015, 7312.10.3020, 7312.10.3065, 7312.10.3075, 7312.10.3080, 7312.10.3090 of the HTS. Wire strand is included in AISI product group No. 41.

(F) Wire ropes, cables, and cordage are products made by the twisting of a number of wire strands and are not covered with nonmetallic material, not fitted with fittings, not made up into articles, and, if valued 13 cents or more per pound, not of brass plated wire; as provided for in items 7312.10.6000, 7312.10.9030, 7312.10.9060, 7312.10.9090 of the HTS. Wire ropes, cables, and cordage are included in AISI product group No. 47.

13. Structurals.--Nontubular products not conforming completely to the respective specifications set forth in the HTS for semi-finished, flat-rolled, bars and rod or wire.

(i) Heavy structural shapes having a maximum cross-sectional dimension of 7.62 cm or more, and sheet piling; as provided for in items 7216.31.0000, 7216.32.0000, 7216.33.0030, 7216.33.0060, 7216.33.0090, 7216.40.0010, 7216.40.0050, 7216.50.0000, 7222.40.3020, 7222.40.3040, 7228.70.3020, 7228.70.3040, 7301.10.0000 of the HTS and are included in AISI product group 4.

(ii) Fabricated structural units, which include columns, pillars, posts, beams, girders, and similar structural units; as provided for in items 7216.60.0000, 7216.90.0000, 7222.40.6000, 7228.70.6000, 7301.20.1000, 7301.20.5000, 7308.10.0000, 7308.20.0000, 7308.40.0000, 7308.90.3000, 7308.90.6000, 7308.90.9030, 7308.90.9090, 8430.49.4000 of the HTS. These products, are included in AISI product group No. 38 and 39.

14. Rails and related railway products as defined by the following:

(i) Rails are hot-rolled steel products, whether punched or not punched, weighing not less than 8 pounds per yard, with cross-sectional shapes intended for carrying wheel loads in railroad, railway, and crane runway applications; as provided for in items 7302.10.10, 7302.10.1015, 7302.10.1020, 7302.10.1025, 7302.10.1035, 7302.10.1040, 7302.10.1045, 7302.10.0055, 7302.10.1060, 7302.10.1065, 7302.10.1075, 7302.10.1080, 7302.10.5000, 7302.10.5020, 7302.10.5040, 7302.10.5060 of the HTS. Rails are included in AISI product group Nos. 7, 8 and 41.

(ii) Joint bars are hot-rolled steel products, usually punched or slotted, designed to connect the ends of adjacent rails in track; tie plates are hot-rolled steel products which are punched to provide holes for spikes and have one or two shoulder sections as rail guides and are used to support rails in track, to maintain track gauge, and protect the ties; all the foregoing, as provided for in items 7302.20.0000, 7302.30.0000, 7302.40.0000, 7302.90.0000 of the HTS. Joint bars and tie plates are included in AISI product group Nos. 9 and 42.

(iii) Railway track spikes, of one piece construction, used to secure tie plates or ties; as provided for in item 7317.00.6530, 7317.00.6560 of the HTS. Railway track spikes are included in AISI product group No. 51 (pt.).

(iv) Railroad and railway (RR) axles and wheels, parts thereof, and axle bars; as provided for in items 8607.19.1000, 8607.19.2000 of the HTS. These articles are included in AISI product group No. 43.

15. Pipes and tubes and blanks therefor.--Tubular products, including hollow bars and hollow billets but not including hollow drill steel, of any cross-sectional configuration, by whatever process made, whether seamless, brazed, or welded and whether with an open or lock seam or joint. For the purposes of this investigation, pipes and tubes and blanks therefor are classified as follows:

(i) Oil country tubular goods, provided for in items 7304.20.1000, 7304.20.2000, 7304.20.3000, 7304.20.4000, 7304.20.5010, 7304.20.5050, 7304.20.6010, 7304.20.6050, 7304.20.7000, 7304.20.8000, 7305.20.2000, 7305.20.4000, 7305.20.6000, 7305.20.8000, 7306.20.1030, 7306.20.1090, 7306.20.2000, 7306.20.3000, 7306.20.4000, 7306.20.6010, 7306.20.6050, 7306.20.8010, 7306.20.8050 of the HTS. Oil country tubular goods are included in AISI product group No. 19.

(ii) Line pipe; provided for in items 7304.10.1020, 7304.10.1050, 7304.10.1080, 7304.10.5020, 7304.10.5050, 7304.10.5080, 7305.11.1030, 7305.11.1060, 7305.11.5000, 7305.12.1030, 7305.12.1060, 7305.12.5000, 7305.19.1030, 7305.19.1060, 7305.19.5000, 7306.10.1010, 7306.10.1050, 7306.10.5010, 7306.10.5050 of the HTS. Line pipe is included in AISI product group No. 20.

(iii) Mechanical pipe; provided for in items 7304.31.3000, 7304.31.6050, 7304.39.0050, 7304.39.0075, 7304.51.0000, 7304.51.5090, 7304.59.1000, 7304.59.6000, 7304.59.8000, 7304.90.5000, 7304.90.7000, 7306.30.1000, 7306.30.5015, 7306.30.5020, 7306.30.5035, 7306.3.5060, 7306.30.5075, 7306.50.1000, 7306.50.5030, 7306.50.5050, 7306.50.5070, 7306.60.5000, 7306.60.7000 of the HTS. Mechanical pipe is included in AISI product group 21A.

(iv) Structural pipe; provided for in items 7304.90.1000, 7304.90.3000, 7305.31.2000, 7305.31.4000, 7305.31.6000, 7306.30.3000, 7306.50.3000, 7306.60.1000, 7306.60.3000 of the HTS. Structural pipe is included in AISI product category 22A.

(v) Pressure tubing; provided for in items 7304.31.6010, 7304.39.0005, 7304.51.5030, 7304.51.5050, 7304.59.2030, 7304.59.2050, 7306.30.5010, 7306.50.5010 of the HTS. Pressure tubing is included in AISI product category 21B.

(vi) Stainless steel pipes and tubes; provided for in items 7304.41.0010, 7304.41.0050, 7304.49.0010, 7304.49.0030, 7304.49.0050, 7306.40.1000, 7306.40.5010, 7306.40.5030, 7306.40.5050, 7306.40.5070 of the HTS. Stainless steel pipes and tubes are included in AISI product categories 21C and D.

(vii) Other, including standard; provided for in items 7304.39.0010, 7304.39.0015, 7304.39.0025, 7304.39.0030, 7304.39.0040, 7304.39.0060, 7304.39.0070, 7304.39.0090, 7305.39.1000, 7305.39.5000, 7305.90.1000, 7305.90.5000, 7306.30.5025, 7306.30.5028, 7306.30.5030, 7306.30.5032, 7306.30.5040, 7306.30.5050, 7306.30.5055, 7306.30.5065, 7306.30.5070, 7306.30.5080, 7306.30.5085, 7306.30.5090, 7306.90.1000, 7306.90.5000 of the HTS. Other, including standard pipe is included in AISI product categories 18, 21E and 22B.

16. Alloy tool steel (all forms) provided for in items 7224.10.0030, 7224.90.0010, 7224.90.0020, 7224.90.0030, 7225.20.0000, 7225.30.1000, 7225.30.5060, 7225.40.1090, 7225.40.5060, 7225.50.1060, 7226.20.0000, 7226.91.1060, 7226.91.3060, 7226.92.1060, 7226.92.3060, 7227.10.0000, 7227.90.1060, 7227.90.2060, 7228.10.0010, 7228.10.0030, 7228.10.0060, 7228.30.4000, 7228.30.6000, 7228.50.1020, 7228.50.1040, 7228.50.1060, 7228.50.1080, 7228.60.1060, 7229.10.0000 of the HTS.

Alloy tool steel is included in AISI product group No. 17. Please refer to Notes section for further explanation.

