

1962

**QUARTERLY SURVEY ON CERTAIN
STAINLESS STEEL AND ALLOY
TOOL STEEL (COVERING
THE FIRST QUARTER
OF 1987)**

**Report to the President on
Investigation No. 332-167
Under Section 332 of the
Tariff Act of 1930**

USITC PUBLICATION 1962

MAY 1987

UNITED STATES INTERNATIONAL TRADE COMMISSION

COMMISSIONERS

Susan Liebeler, Chairman
Anne E. Brunsdale, Vice Chairman
Alfred E. Eckes
Seeley G. Lodwick
David B. Rohr

This report was prepared by

Nancy Fulcher
Mark Paulson
Anna Mae Toth

Iron and Steel Products Branch
Minerals and Metals Division

Office of Industries
Erland Heginbotham, Director

Address all communications to
Kenneth R. Mason, Secretary to the Commission
United States International Trade Commission
Washington, DC 20436

NOTICE

The whole of the Commission's report to the President may not be made public since it contains certain information that has been classified by the United States Trade Representative or would result in the disclosure of the operations of individual concerns. This published report is the same as the report to the President, except that the above-mentioned information has been omitted (as indicated by asterisks).

The office of the Controller is pleased to have the honor of receiving from you a copy of the report of the Board of Directors of the State of California for the year ending June 30, 1900. The report is a most interesting and valuable one, and it is gratifying to find that the Board has done so much for the State during the past year. The report is a most interesting and valuable one, and it is gratifying to find that the Board has done so much for the State during the past year.

C O N T E N T S

	<u>Page</u>
Highlights-----	1
Tables	
1. Certain stainless steel and alloy tool steel: U.S. production, U.S. producers' shipments, average number of all persons employed, average number of production and related workers employed, and number of man-hours worked by production and related workers, by specified periods, October 1982-March 1987-----	4
2. Certain stainless steel and alloy tool steel: U.S. production, by types and by specified periods, October 1982-March 1987-----	5
3. Certain stainless steel and alloy tool steel: U.S. producers' shipments, by types, by specified periods, October 1982-March 1987-----	6
4. Certain stainless steel and alloy tool steel: Average number of all persons employed in U.S. establishments in which certain stainless steel and alloy tool steel products are produced, by specified periods, October 1982-March 1987-----	7
5. Certain stainless steel and alloy tool steel: Average number of production and related workers employed in U.S. establishments in which certain stainless steel and alloy tool steel products are produced, by specified periods, October 1982-March 1987-----	8
6. Certain stainless steel and alloy tool steel: Number of man-hours worked by production and related workers in U.S. establishments in which certain stainless steel and alloy tool steel products are produced, by specified periods, October 1982-March 1987-----	9
7a. Stainless steel sheets (cold-rolled): Ranges and weighted averages of lowest net selling prices and average price of total quantity shipped by U.S. producers and importers to steel service centers or distributors, by periods indicated, October 1986-March 1987-----	10
7b. Stainless steel sheets (cold-rolled): Ranges and weighted averages of lowest net selling prices and average price of total quantity shipped by U.S. producers and importers to end-use customers, by periods indicated, October 1986-March 1987-----	11
8a. Stainless steel sheets (cold-rolled): Ranges and weighted averages of lowest net selling prices and average price of total quantity shipped by U.S. producers and importers to steel service centers or distributors, by periods indicated, October 1986-March 1987-----	12
8b. Stainless steel sheets (cold-rolled): Ranges and weighted averages of lowest net selling prices and average price of total quantity shipped by U.S. producers and importers to end-use customers, by periods indicated, October 1986-March 1987-----	13
9a. Stainless steel sheets (cold-rolled): Ranges and weighted averages of lowest net selling prices and average price of total quantity shipped by U.S. producers and importers to steel service centers or distributors, by periods indicated, October 1986-March 1987-----	14

CONTENTS

Tables—Continued

	<u>Page</u>
9b. Stainless steel sheets (cold-rolled): Ranges and weighted averages of lowest net selling prices and average price of total quantity shipped by U.S. producers and importers to end-use customers, by periods indicated, October 1986–March 1987—	15
10a. Stainless steel sheets (cold-rolled): Ranges and weighted averages of lowest net selling prices and average price of total quantity shipped by U.S. producers and importers to steel service centers or distributors, by periods indicated, October 1986–March 1987—	16
10b. Stainless steel sheets (cold-rolled): Ranges and weighted averages of lowest net selling prices and average price of total quantity shipped by U.S. producers and importers to end-use customers, by periods indicated, October 1986–March 1987—	17
11a. Stainless steel plate: Ranges and weighted averages of lowest net selling prices and average price of total quantity shipped by U.S. producers and importers to steel service centers or distributors, by periods indicated, October 1986–March 1987—	18
11b. Stainless steel plate: Ranges and weighted averages of lowest net selling prices and average price of total quantity shipped by U.S. producers and importers to end-use customers, by periods indicated, October 1986–March 1987—	19
12a. Stainless steel plate: Ranges and weighted averages of lowest net selling prices and average price of total quantity shipped by U.S. producers and importers to steel service centers or distributors, by periods indicated, October 1986–March 1987—	20
12b. Stainless steel plate: Ranges and weighted averages of lowest net selling prices and average price of total quantity shipped by U.S. producers and importers to end-use customers, by periods indicated, October 1986–March 1987—	21
13a. Stainless steel plate: Ranges and weighted averages of lowest net selling prices and average price of total quantity shipped by U.S. producers and importers to steel service centers or distributors, by periods indicated, October 1986–March 1987—	22
13b. Stainless steel plate: Ranges and weighted averages of lowest net selling prices and average price of total quantity shipped by U.S. producers and importers to end-use customers, by periods indicated, October 1986–March 1987—	23
14a. Stainless steel plate: Ranges and weighted averages of lowest net selling prices and average price of total quantity shipped by U.S. producers and importers to steel service centers or distributors, by periods indicated, October 1986–March 1987—	24
14b. Stainless steel plate: Ranges and weighted averages of lowest net selling prices and average price of total quantity shipped by U.S. producers and importers to end-use customers, October 1986–March 1987—	25

CONTENTS

Tables—Continued

	<u>Page</u>
15a. Stainless steel bars: Ranges and weighted averages of lowest net selling prices and average price of total quantity shipped by U.S. producers and importers to steel service centers or distributors, by periods indicated, October 1986–March 1987—	26
15b. Stainless steel bars: Ranges and weighted averages of lowest net selling prices and average price of total quantity shipped by U.S. producers and importers to end-use customers, by periods indicated, October 1986–March 1987—	27
16a. Stainless steel bars: Ranges and weighted averages of lowest net selling prices and average price of total quantity shipped by U.S. producers and importers to steel service centers or distributors, by periods indicated, October 1986–March 1987—	28
16b. Stainless steel bars: Ranges and weighted averages of lowest net selling prices and average price of total quantity shipped by U.S. producers and importers to end-use customers, by periods indicated, October 1986–March 1987—	29
17a. Stainless steel bars: Ranges and weighted averages of lowest net selling prices and average price of total quantity shipped by U.S. producers and importers to steel service centers or distributors, by periods indicated, October 1986–March 1987—	30
17b. Stainless steel bars: Ranges and weighted averages of lowest net selling prices and average price of total quantity shipped by U.S. producers and importers to end-use customers, by periods indicated, October 1986–March 1987—	31
18a. Stainless steel bars: Ranges and weighted averages of lowest net selling prices and average price of total quantity shipped by U.S. producers and importers to steel service centers or distributors, by periods indicated, October 1986–March 1987—	32
18b. Stainless steel bars: Ranges and weighted averages of lowest net selling prices and average price of total quantity shipped by U.S. producers and importers to end-use customers, by periods indicated, October 1986–March 1987—	33
19. Stainless steel wire rod: Ranges and weighted averages of lowest net selling prices and average price of total quantity shipped by U.S. producers and importers to end-use customers, by periods indicated, October 1986–March 1987—	34
20. Alloy tool steel bars: Ranges and weighted averages of lowest net selling prices and average price of total quantity shipped by U.S. producers and importers to end-use customers, by periods indicated, October 1986–March 1987—	35
21. Alloy tool steel bars: Ranges and weighted averages of lowest net selling prices and average price of total quantity shipped by U.S. producers and importers to end-use customers, by periods indicated, October 1986–March 1987—	36

CONTENTS

Tables—Continued

	<u>Page</u>
22. Alloy tool steel bars: Ranges and weighted averages of lowest net selling prices and average price of total quantity shipped by U.S. producers and importers to end-use customers, by periods indicated, October 1986–March 1987	37
23. Alloy tool steel bars: Ranges and weighted averages of lowest net selling prices and average price of total quantity shipped by U.S. producers and importers to end-use customers, by periods indicated, October 1986–March 1987	38
24. Certain stainless steel and alloy tool steel: U.S. importers' unfilled orders from foreign sources, by types, as of December 31, 1986 and March 31, 1987	39
25. Certain stainless steel and alloy tool steel: U.S. importers' inventories, by types, as of December 31, 1986 and March 31, 1987	39

QUARTERLY REPORT ON CERTAIN STAINLESS STEEL AND ALLOY TOOL STEEL

HIGHLIGHTS

During the first quarter (January-March) 1987, compared to the fourth quarter of 1986:

- DOMESTIC PRODUCTION of the stainless steel and alloy tool steel products covered by the investigation increased 18 percent to 317,304 tons; increases occurred in all product categories.
- U.S. PRODUCERS' SHIPMENTS rose 12 percent to 299,877 tons.
- AVERAGE EMPLOYMENT of production and related workers increased 1 percent to 10,675 workers.
- U.S. PRODUCERS' AND IMPORTERS' PRICES showed noteworthy declines and increases among products. There were a fairly equal number of increases and decreases in producers' prices compared with the previous quarter, but importers' prices showed more declines than increases.
- U.S. IMPORTERS' UNFILLED ORDERS increased 11 percent to 37,866 tons.
- U.S. IMPORTERS' INVENTORIES decreased 8 percent to 19,589 tons.

U.S. production and producers' shipments

U.S. production of the stainless steel and alloy tool steel products covered by the investigation increased overall from October-December 1986 to January-March 1987. There were production and shipment increases in all product categories, partly reflecting increased domestic demand from automobile and appliance manufacturers, and increased export demand. Stainless steel flat-rolled product producers may also be benefiting from the effects of the Voluntary Restraint Agreements (VRA's) which have led to reduced imports of stainless steel sheet, strip, and plate in a growing U.S. market during early 1987, permitting U.S. producers of these products to expand their market share.

Employment and hours worked

The average number of all persons employed in producing the subject stainless steel and alloy tool steel products increased from 14,646 persons to 14,856 persons, or by 1 percent, from October–December 1986 to January–March 1987. Employment of production and related workers rose from 10,543 workers to 10,675 workers, or by 1 percent, over the same period. These increases in employment are the first to occur since the second quarter of 1984, and reflect the rise in production levels. The number of hours worked by production and related workers increased by 8 percent during the period.

U.S. producers' prices

Surveys of the weighted average prices of selected domestic stainless steel and alloy tool steel products showed a fairly equal number of price declines and increases between October 1986 and March 1987 for sales to both service centers and end-users. This marks a halt in the downward pattern in producers' prices that occurred during 1986.

U.S. importers' prices

Pricing data reported by U.S. importers for certain stainless steel and alloy tool steel products revealed more price declines than increases between October 1986 and March 1987. This is a departure from the fluctuating pattern that has generally characterized importers' prices since early 1985.

U.S. importers' unfilled orders and inventories

Data on importers' unfilled orders from foreign sources indicate an overall increase between December 31, 1986 and March 31, 1987. There were increases in such orders for stainless steel sheets and strip, plate, and alloy tool steel and decreases in orders for stainless steel bar and wire rod during the period. Importers' inventories of * * * decreased between the two quarters, while inventories of * * * rose.

Table 1.--Certain stainless steel and alloy tool steel: U.S. production, U.S. producers' shipments, average number of all persons employed, average number of production and related workers employed, and number of man-hours worked by production and related workers, by specified periods, October 1982-March 1987

Period	U.S. production -----tons-----	U.S. producers shipments	Average number of all persons employed	Average number of production and related workers employed	Man-hours worked by production and related workers
1982:					
Oct.-Dec.---	162,178	163,952	13,904	9,312	4,309,228
1983:					
Jan.-Mar.---	204,170	196,850	15,411	9,725	5,002,444
Apr.-Jun.---	234,292	230,994	14,782	10,069	5,583,320
Jul.-Sep.---	291,662	264,304	18,705	13,503	6,364,524
Oct.-Dec.---	315,624	293,239	19,088	13,652	6,936,212
1984:					
Jan.-Mar.---	340,076	314,040	19,781	14,551	7,722,925
Apr.-Jun.---	321,407	312,983	19,786	14,611	7,129,428
Jul.-Sep.---	231,874	251,268	19,279	13,961	6,371,301
Oct.-Dec.---	284,644	268,161	19,056	13,660	6,728,275
1985:					
Jan.-Mar.---	313,391	307,153	18,336	13,140	6,738,552
Apr.-Jun.---	323,894	313,349	17,836	12,923	6,839,863
Jul.-Sep.---	273,340	279,146	17,077	12,222	6,002,974
Oct.-Dec.---	254,487	272,054	16,170	11,467	5,782,460
1986:					
Jan.-Mar.---	265,905	272,872	15,567	11,240	5,790,222
Apr.-Jun.---	283,583	270,110	14,965	11,030	5,757,539
Jul.-Sep.---	263,536	247,461	14,897	10,636	5,000,457
Oct.-Dec.---	269,242	266,816	14,646	10,543	5,075,902
1987:					
Jan.-Mar.---	317,304	299,877	14,856	10,675	5,473,229

Source: Compiled from data submitted in response to questionnaires of the U.S. International Trade Commission.

Table 2.--Certain stainless steel and alloy tool steel: U.S. production, by types and by specified periods, October 1982-March 1987

(In tons)

Period	Stainless steel				Alloy tool steel, all forms
	Sheets and strip	Plate	Bar	Rod	
1982:					
Oct.-Dec.---	107,873	23,145	17,321	5,067	8,772
1983:					
Jan.-Mar.---	143,081	22,538	21,113	6,195	11,243
Apr.-Jun.---	160,718	23,437	27,105	8,489	14,543
Jul.-Sep.---	215,116	24,690	31,123	8,174	12,559
Oct.-Dec.---	217,471	30,710	37,188	10,893	19,362
1984:					
Jan.-Mar.---	226,397	29,727	46,701	13,029	24,222
Apr.-Jun.---	201,604	35,433	47,088	13,462	23,820
Jul.-Sep.---	130,561	29,387	41,377	9,615	20,934
Oct.-Dec.---	176,174	33,747	42,782	11,015	20,926
1985:					
Jan.-Mar.---	203,589	35,734	46,158	10,071	17,839
Apr.-Jun.---	213,547	42,168	44,717	7,338	16,124
Jul.-Sep.---	185,045	34,944	32,367	5,620	15,364
Oct.-Dec.---	164,066	31,658	34,239	7,741	16,783
1986:					
Jan.-Mar.---	170,519	29,739	37,164	10,098	18,385
Apr.-Jun.---	185,467	33,434	37,368	9,585	17,729
Jul.-Sep.---	170,519	29,739	37,164	10,098	16,016
Oct.-Dec.---	184,996	33,287	28,192	10,109	12,658
1987:					
Jan.-Mar.---	216,438	36,120	36,930	10,817	16,999
1987:					
January-----	76,164	11,923	11,516	4,085	4,383
February-----	68,571	11,881	12,576	3,001	5,413
March-----	71,703	12,316	12,838	3,731	7,203

Source: Compiled from data submitted in response to questionnaires of the U.S. International Trade Commission.

Table 3.--Certain stainless steel and alloy tool steel: U.S. producers' shipments, by types, by specified periods, October 1982-March 1987

(In tons)

Period	Stainless steel				Alloy tool steel, all forms
	Sheets and strip	Plate	Bar	Rod	
1982:					
Oct.-Dec.---	107,711	21,512	19,594	5,188	9,947
1983:					
Jan.-Mar.---	132,297	22,565	24,172	5,976	11,840
Apr.-Jun.---	159,874	24,479	25,380	8,239	13,022
Jul.-Sep.---	192,448	24,314	26,534	7,863	13,145
Oct.-Dec.---	209,154	27,732	32,024	9,918	14,411
1984:					
Jan.-Mar.---	210,616	29,591	41,436	12,201	20,196
Apr.-Jun.---	201,518	30,680	42,246	14,096	24,443
Jul.-Sep.---	155,535	28,093	38,212	10,434	18,994
Oct.-Dec.---	169,922	28,439	37,476	12,490	19,834
1985:					
Jan.-Mar.---	205,907	36,108	37,281	9,623	18,234
Apr.-Jun.---	207,267	40,779	40,479	7,232	17,592
Jul.-Sep.---	190,149	36,739	31,550	5,900	14,808
Oct.-Dec.---	183,923	32,018	32,014	8,173	15,926
1986:					
Jan.-Mar.---	177,724	31,106	36,834	9,436	17,772
Apr.-Jun.---	176,310	32,375	35,516	9,785	16,124
Jul.-Sep.---	165,964	26,516	31,200	9,170	14,611
Oct.-Dec.---	183,490	30,223	30,056	9,298	13,748
1987:					
Jan.-Mar.---	202,576	37,120	35,127	10,041	15,013
1987:					
January-----	74,496	12,889	11,663	3,001	4,324
February-----	62,293	11,288	11,539	3,370	5,113
March-----	65,787	12,943	11,925	3,670	5,576

Source: Compiled from data submitted in response to questionnaires of the U.S. International Trade Commission.

Table 4.--Certain stainless steel and alloy tool steel: Average number of all persons employed in U.S. establishments in which certain stainless steel and alloy tool steel products are produced, by specified periods, October 1982-March 1987

Period	Stainless steel				Alloy tool steel, all forms
	Sheets and strip	Plate	Bar	Rod	
1982:					
Oct.-Dec.-----	4,320	1,609	3,497	873	3,605
1983:					
Jan.-Mar.-----	6,249	1,459	3,422	796	3,485
Apr.-Jun.-----	5,234	1,514	3,450	1,027	3,557
Jul.-Sep.-----	8,388	1,542	4,112	1,090	3,573
Oct.-Dec.-----	8,226	1,498	4,316	1,234	3,814
1984:					
Jan.-Mar.-----	8,748	1,326	4,490	1,264	3,953
Apr.-Jun.-----	7,789	1,526	5,016	1,304	4,151
Jul.-Sep.-----	6,573	1,712	5,700	1,158	4,136
Oct.-Dec.-----	6,472	1,754	5,385	1,244	4,201
1985:					
Jan.-Mar.-----	6,555	1,619	5,213	990	3,959
Apr.-Jun.-----	6,405	1,900	5,658	754	3,119
Jul.-Sep.-----	6,320	1,845	5,192	706	3,014
Oct.-Dec.-----	5,985	1,607	4,810	866	2,902
1986:					
Jan.-Mar.-----	5,353	1,416	4,803	943	3,051
Apr.-Jun.-----	5,061	1,522	4,454	956	2,972
Jul.-Sep.-----	5,222	1,555	4,299	1,024	2,797
Oct.-Dec.-----	5,263	1,649	4,092	1,075	2,567
1987:					
Jan.-Mar.-----	5,618	1,618	4,018	1,022	2,580
1987:					
January-----	5,578	1,691	4,115	1,033	2,467
February-----	5,211	1,683	3,951	966	2,655
March-----	6,066	1,479	3,988	1,067	2,618

Source: Compiled from data submitted in response to questionnaires of the U.S. International Trade Commission.

Table 5.--Certain stainless steel and alloy tool steel: Average number of production and related workers employed in U.S. establishments in which certain stainless steel and alloy tool steel products are produced, by specified periods, October 1982-March 1987

Period	Stainless steel				Alloy tool steel, all forms
	Sheets and strip	Plate	Bar	Rod	
1982:					
Oct.-Dec.-----	3,243	1,162	2,037	476	2,394
1983:					
Jan.-Mar.-----	3,854	1,056	2,004	456	2,355
Apr.-Jun.-----	3,842	1,115	2,126	598	2,388
Jul.-Sep.-----	6,656	1,075	2,656	666	2,450
Oct.-Dec.-----	6,466	1,115	3,024	780	2,267
1984:					
Jan.-Mar.-----	6,987	977	3,024	807	2,756
Apr.-Jun.-----	6,272	1,082	3,496	847	2,914
Jul.-Sep.-----	5,129	1,220	3,958	735	2,919
Oct.-Dec.-----	4,983	1,233	3,749	782	2,913
1985:					
Jan.-Mar.-----	5,099	1,126	3,548	636	2,731
Apr.-Jun.-----	5,006	1,418	3,852	463	2,184
Jul.-Sep.-----	4,836	1,337	3,521	443	2,085
Oct.-Dec.-----	4,527	1,158	3,280	528	1,974
1986:					
Jan.-Mar.-----	4,023	1,115	3,350	621	2,130
Apr.-Jun.-----	4,107	1,126	3,102	635	2,061
Jul.-Sep.-----	4,003	1,122	2,901	659	1,951
Oct.-Dec.-----	4,023	1,184	2,868	733	1,735
1987:					
Jan.-Mar.-----	4,302	1,158	2,714	683	1,818
1987:					
January-----	4,253	1,211	2,771	715	1,777
February-----	4,002	1,200	2,615	620	1,819
March-----	4,650	1,064	2,755	715	1,859

Source: Compiled from data submitted in response to questionnaires of the U.S. International Trade Commission.

Table 6.--Certain stainless steel and alloy tool steel: Number of man-hours worked by production and related workers in U.S. establishments in which certain stainless steel and alloy tool steel products are produced, by specified periods, October 1982-March 1987

Period	Stainless steel				Alloy tool steel, all forms
	Sheets and strip	Plate	Bar	Rod	
1982:					
Oct.-Dec.-----	1,881,440	390,777	879,812	187,186	970,013
1983:					
Jan.-Mar.-----	2,384,759	436,443	1,002,148	219,000	960,094
Apr.-Jun.-----	2,668,251	465,570	1,106,076	302,000	1,041,423
Jul.-Sep.-----	3,020,375	486,076	1,484,447	325,431	1,048,195
Oct.-Dec.-----	3,099,366	450,775	1,736,844	408,380	1,240,847
1984:					
Jan.-Mar.-----	3,500,712	480,128	1,898,138	456,520	1,387,427
Apr.-Jun.-----	2,820,172	559,518	1,846,557	461,516	1,441,665
Jul.-Sep.-----	2,301,369	559,121	1,712,532	365,165	1,433,114
Oct.-Dec.-----	2,388,108	645,249	1,837,000	394,702	1,463,216
1985:					
Jan.-Mar.-----	2,534,419	610,130	1,839,220	333,347	1,421,436
Apr.-Jun.-----	2,664,684	845,420	1,963,597	242,741	1,123,421
Jul.-Sep.-----	2,476,419	697,449	1,635,601	207,594	985,911
Oct.-Dec.-----	2,314,630	625,429	1,592,194	262,699	987,508
1986:					
Jan.-Mar.-----	2,124,130	559,331	1,713,394	327,497	1,065,867
Apr.-Jun.-----	2,195,012	589,025	1,577,287	337,943	1,058,272
Jul.-Sep.-----	1,972,141	453,443	1,340,791	298,208	935,874
Oct.-Dec.-----	2,047,082	597,066	1,273,978	320,639	837,137
1987:					
Jan.-Mar.-----	2,234,080	598,493	1,418,807	349,779	872,070
1987:					
January-----	748,576	205,480	462,409	118,254	251,478
February-----	676,047	206,298	453,416	103,572	294,416
March-----	809,457	186,715	502,982	127,953	326,177

Source: Compiled from data submitted in response to questionnaires of the U.S. International Trade Commission.

Table 7a.--Stainless steel sheets (cold-rolled) 1/: Ranges and weighted averages of lowest net selling prices and average price of total quantity shipped by U.S. producers and importers to steel service centers or distributors, by periods indicated, October 1986 - March 1987

(Dollars per ton)

Period	Range	Lowest price	Weighted average	Range	Average price of total quantity shipped	Weighted average
U.S. producers						
1986:						
October-----		***	***	1,620 - 1,693		1,653
November-----	1,503 - 1,617		1,570	1,550 - 1,683		1,629
December-----		***	***	1,597 - 1,670		1,648
1987:						
January-----	1,593 - 1,658		1,612	1,642 - 1,679		1,668
February-----	1,551 - 1,635		1,607	1,639 - 1,688		1,674
March-----	1,568 - 1,620		1,597	1,631 - 1,725		1,687
U.S. importers						
1986:						
Oct.-Dec.-----	1,526 - 1,855		1,740	1,526 - 1,855		1,747
1987:						
Jan.-Mar.-----	1,620 - 1,948		1,815	1,620 - 1,948		1,754

1/ Grade 304, 2B finish, 16 gage, 36" - 48", coil.

Source: Compiled from data submitted in response to questionnaires of the U.S. International Trade Commission.

Table 7b.--Stainless steel sheets (cold-rolled) 1/: Ranges and weighted averages of lowest net selling prices and average price of total quantity shipped by U.S. producers and importers to end-use customers, by periods indicated, October 1986 - March 1987

(Dollars per ton)

Period	Range	Lowest price	Weighted average	Range	Average price of total quantity shipped	Weighted average
U.S. producers						
1986:						
October-----		***	***		***	***
November-----	1,594 - 1,759		1,644	1,594 - 1,759		1,657
December-----		***	***		***	***
1987:						
January-----		***	***		***	***
February-----		***	***		***	***
March-----	1,493 - 1,758		1,653		***	***
U.S. importers						
1986:						
Oct.-Dec.-----		***	***		***	***
1987:						
Jan.-Mar.-----		***	***		***	***

1/ Grade 304, 2B finish, 16 gage, 36" - 48", coil.

Source: Compiled from data submitted in response to questionnaires of the U.S. International Trade Commission.

Table 8a.--Stainless steel sheets (cold-rolled) 1/: Ranges and weighted averages of lowest net selling prices and average price of total quantity shipped by U.S. producers and importers to steel service centers or distributors, by periods indicated, October 1986 - March 1987

(Dollars per ton)

Period	Range	Lowest price		Average price of total quantity shipped	
			Weighted average	Range	Weighted average
U.S. producers					
1986:					
October-----	-		-	***	***
November-----	-		-		
December-----		***	***	***	***
1987:					
January-----		***	***	***	***
February-----		***	***	***	***
March-----		***	***	***	***
U.S. importers					
1986:					
Oct.-Dec.-----		***	***	***	***
1987:					
Jan.-Mar.-----	1,555 - 1,623		1,557	***	***

1/ Grade 430, BA finish, 24 gage, 12" - 24", coil.

Source: Compiled from data submitted in response to questionnaires of the U.S. International Trade Commission.

Table 8b.--Stainless steel sheets (cold-rolled) 1/: Ranges and weighted averages of lowest net selling prices and average price of total quantity shipped by U.S. producers 2/ and importers to end-use customers, by periods indicated, October 1986 - March 1987

(Dollars per ton)

Period	Range	Lowest price		Average price of total quantity shipped	
		Range	Weighted average	Range	Weighted average
U.S. producers					
1986:					
October-----		***	***	***	***
November-----		***	***	***	***
December-----		***	***	***	***
1987:					
January-----		***	***	***	***
February-----		***	***	***	***
March-----		***	***	***	***
U.S. importers					
1986:					
Oct.-Dec.-----		***	***	***	***
1987:					
Jan.-Mar.-----		***	***	***	***

1/ Grade 430, BA finish, 24 gage, 12" - 24", coil.

2/ Producers did not report sales to end-use customers during this period.

Source: Compiled from data submitted in response to questionnaires of the U.S. International Trade Commission.

Table 9a.--Stainless steel sheets (cold-rolled) 1/: Ranges and weighted averages of lowest net selling prices and average price of total quantity shipped by U.S. producers and importers to steel service centers or distributors, by periods indicated, October 1986 - March 1987

(Dollars per ton)

Period	Range	Lowest price		Average price of total quantity shipped	
		Weighted average	Range	Weighted average	Weighted average
U.S. producers					
1986:					
October-----		***	***	2,091 - 2,123	2,103
November-----		***	***	2,016 - 2,095	2,090
December-----		***	***	2,071 - 2,083	2,077
1987:					
January-----		***	***	***	***
February-----		***	***	***	***
March-----		***	***	2,086 - 2,223	2,130
U.S. importers					
1986:					
Oct.-Dec.-----		***	***	***	***
1987:					
Jan.-Mar.-----		***	***	***	***

1/ Grade 316, 2B finish, 16 gage, 36" - 48", coil.

Sources: Compiled from data submitted in response to questionnaires of the U.S. International Trade Commission.

Table 9b.--Stainless steel sheets (cold-rolled) 1/; Ranges and weighted averages of lowest net selling prices and average price of total quantity shipped by U.S. producers and importers to end-use customers, by periods indicated, October 1986 - March 1987

(Dollars per ton)

Period	Range	Lowest price	Weighted average	Range	Average price of total quantity shipped	Weighted average
U.S. producers						
1986:						
October-----	-			-		
November-----	-			-		
December-----	-			-		
1987:						
January-----		***	***		***	***
February-----	-			-		
March-----		***	***		***	***
U.S. importers						
1986:						
Oct.-Dec.-----		***	***		***	***
1987:						
Jan.-Mar.-----		***	***		***	***

1/ Grade 316, 2B finish, 16 gage, 36" - 48", coil.

Source: Compiled from data submitted in response to questionnaires of the U.S. International Trade Commission.

Table 10a.--Stainless steel sheets (cold-rolled) 1/; Ranges and weighted averages of lowest net selling prices and average price of total quantity shipped by U.S. producers 2/ and importers to steel service centers or distributors, by periods indicated, October 1986 - March 1987

(Dollars per ton)

Period	Range	Lowest price	Weighted average	Range	Average price of total quantity shipped	Weighted average
U.S. importers						
1986:						
Oct.-Dec.-----	1,447 - 1,570		1,501		***	***
1987:						
Jan.-Mar.-----	1,498 - 1,685		1,579	1,515 - 1,699		1,660

1/ Grade 430, BA finish, 20 gage, 36" - 48", coil.

2/ Producers did not report sales to end-use customers during this period.

Source: Compiled from data submitted in response to questionnaires of the U.S. International Trade Commission.

Table 10b.--Stainless steel sheets (cold-rolled) 1/; Ranges and weighted averages of lowest net selling prices and average price of total quantity shipped by U.S. producers 2/ and importers to end-use customers, by periods indicated, October 1986 - March 1987

(Dollars per ton)

Period	Range	Lowest price		Average price of total quantity shipped	
		Weighted average	Range	Weighted average	Weighted average
U.S. importers					
1986:					
Oct.-Dec.-----		***	***	***	***
1987:					
Jan.-Mar.-----		***	***	***	***

1/ Grade 430, BA finish, 20 gage, 36" - 48", coil.

2/ Producers did not report sales to end-use customers during this period.

Source: Compiled from data submitted in response to questionnaires of the U.S. International Trade Commission.

Table 11a.--Stainless steel plate 1/2: Ranges and weighted averages of lowest net selling prices and average price of total quantity shipped by U.S. producers and importers to steel service centers or distributors, by periods indicated, October 1986 - March 1987

(Dollars per ton)

Period	Range	Lowest price		Average price of total quantity shipped	
			Weighted average	Range	Weighted average
----- U.S. producers -----					
1986:					
October-----		***	***	1,677 - 1,850	1,777
November-----		***	***	1,656 - 1,820	1,737
December-----		***	***	1,656 - 1,790	1,763
1987:					
January-----		***	***	1,610 - 1,791	1,730
February-----		***	***	1,610 - 1,770	1,746
March-----	1,587 - 1,700		1,679	1,610 - 1,761	1,712
----- U.S. importers -----					
1986:					
Oct.-Dec.-----		***	***	***	***
1987:					
Jan.-Mar.-----		***	***	***	***

1/ Grade 304, HRAP, 1/2" x 72" - 96" x 240" - 290".

Source: Compiled from data submitted in response to questionnaires of the U.S. International Trade Commission.

Table 11b.--Stainless steel plate 1/: Ranges and weighted averages of lowest net selling prices and average price of total quantity shipped by U.S. producers and importers to end-use customers, by periods indicated, October 1986 - March 1987

(Dollars per ton)

Period	Range	Lowest price		Average price of total quantity shipped	
			Weighted average	Range	Weighted average
U.S. producers					
1986:					
October-----		***	***	***	***
November-----		***	***	***	***
December-----		***	***	***	***
1987:					
January-----	1,660 - 1,765		***	***	***
February-----		***	***	***	***
March-----		***	***	***	***
U.S. importers					
1986:					
Oct.-Dec.-----		***	***	***	***
1987:					
Jan.-Mar.-----		***	***	***	***
1/ Grade 304, HRAP, 1/2" x 72" - 96" x 240" - 290".					

Source: Compiled from data submitted in response to questionnaires of the U.S. International Trade Commission.

Table 12a.--Stainless steel plate 1/4: Ranges and weighted averages of lowest net selling prices and average price of total quantity shipped by U. S. producers and importers to steel service centers or distributors, by periods indicated, October 1986 - March 1987

(Dollars per ton)

Period	Range	Lowest price	Weighted average	Range	Average price of total quantity shipped	Weighted average
U.S. producers						
1986:						
October-----		***	***	2,540 - 2,570		2,551
November-----		***	***		***	***
December-----		***	***		***	***
1987:						
January-----		***	***	2,329 - 2,540		2,423
February-----		***	***	2,342 - 2,523		2,424
March-----		***	***	2,325 - 2,440		2,410
U.S. importers						
1986:						
Oct.-Dec.-----		***	***		***	***
1987:						
Jan.-Mar.-----		-	-		-	-

1/ Grade 316L, HRAP, 1/4" x 72" - 96" x 240" - 290".

Source: Compiled from data submitted in response to questionnaires of the U. S. International Trade Commission.

Table 12b.--Stainless steel plate 1/: Ranges and weighted averages of lowest net selling prices and average price of total quantity shipped by U.S. producers and importers to end-use customers, by periods indicated, October 1986 - March 1987

(Dollars per ton)

Period	Range	Lowest price		Average price of total quantity shipped	
			Weighted average	Range	Weighted average
U.S. producers					
1986:					
October-----		***	***	***	***
November-----		***	***	***	***
December-----		***	***	***	***
1987:					
January-----		***	***	***	***
February-----		***	***	***	***
March-----		***	***	***	***
U.S. importers					
1986:					
Oct.-Dec.-----		***	***	***	***
1987:					
Jan.-Mar.-----		***	***	***	***

1/ Grade 316L, HRAP, 1/4" x 72" - 96" x 240" - 290".

Source: Compiled from data submitted in response to questionnaires of the U.S. International Trade Commission.

Table 13a.--Stainless steel plate 1/: Ranges and weighted averages of lowest net selling prices and average price of total quantity shipped by U.S. producers and importers to steel service centers or distributors, by periods indicated, October 1986 - March 1987

(Dollars per ton)

Period	Range	Lowest price		Average price of total quantity shipped	
			Weighted average	Range	Weighted average
U.S. producers					
1986:					
October-----		***	***	1,781 - 1,940	1,858
November-----	1,758 - 1,904		1,796	1,759 - 1,920	1,829
December-----		***	***	1,775 - 2,030	1,878
1987:					
January-----		***	***	1,818 - 1,950	1,879
February-----		***	***	1,856 - 1,916	1,881
March-----		***	***	1,709 - 1,860	1,820
U.S. importers					
1986:					
Oct.-Dec.-----		***	***	***	***
1987:					
Jan.-Mar.-----		***	***	***	***

1/ Grade 304, HRAP, 1/4" x 72" - 96" x 240" - 290".

Source: Compiled from data submitted in response to questionnaires of the U.S. International Trade Commission.

Table 13b.--Stainless steel plate 1/: Ranges and weighted averages of lowest net selling prices and average price of total quantity shipped by U.S. producers and importers to end-use customers, by periods indicated, October 1986 - March 1987

(Dollars per ton)

Period	Range	Lowest price		Average price of total quantity shipped	
			Weighted average	Range	Weighted average
----- U.S. producers -----					
1986:					
October-----		***	***	***	***
November-----		***	***	***	***
December-----		***	***	***	***
1987:					
January-----		***	***	1,920 - 2,370	2,140
February-----		***	***	***	***
March-----		***	***	1,865 - 1,940	1,922
----- U.S. importers -----					
1986:					
Oct.-Dec.-----		***	***	***	***
1987:					
Jan.-Mar.-----		***	***	***	***

1/ Grade 304, HRAP, 1/4" x 72" - 96" x 240" - 290".					

Source: Compiled from data submitted in response to questionnaires of the U.S. International Trade Commission.

Table 14a.--Stainless steel plate 1/: Ranges and weighted averages of lowest net selling prices and average price of total quantity shipped by U.S. producers and importers to steel service centers or distributors, by periods indicated, October 1986 - March 1987

(Dollars per ton)

Period	Range	Lowest price		Average price of total quantity shipped	
			Weighted average	Range	Weighted average
----- U.S. producers -----					
1986:					
October-----		***	***	***	***
November-----		***	***	***	***
December-----		***	***	***	***
1987:					
January-----	2,143 - 2,320		2,228	2,143 - 2,385	2,317
February-----	2,143 - 2,242		2,191	2,220 - 2,345	2,254
March-----		***	***	2,143 - 2,323	2,245
----- U.S. importers -----					
1986:					
Oct.-Dec.-----		***	***	***	***
1987:					
Jan.-Mar.-----		***	***	***	***

1/ Grade 316, HRAP, 1/2" x 72" - 96" x 240" - 290".					

Source: Compiled from data submitted in response to questionnaires of the U.S. International Trade Commission.

Table 14b.--Stainless steel plate 1/; Ranges and weighted averages of lowest net selling prices and average price of total quantity shipped by U.S. producers and importers to end-use customers, by periods indicated, October 1986 - March 1987

(Dollars per ton)

Period	Range	Lowest price		Average price of total quantity shipped	
			Weighted average	Range	Weighted average
U.S. producers					
1986:					
October-----		***	***	***	***
November-----		***	***	***	***
December-----		***	***	***	***
1987:					
January-----		***	***	***	***
February-----		***	***	***	***
March-----		***	***	***	***
U.S. importers					
1986:					
Oct.-Dec.-----		***	***	***	***
1987:					
Jan.-Mar.-----		***	***	***	***

1/ Grade 316, HRAP, 1/2" x 72" - 96" x 240" - 290".

Source: Compiled from data submitted in response to questionnaires of the U.S. International Trade Commission.

Table 15a.--Stainless steel bars 17: Ranges and weighted averages of lowest net selling prices and average price of total quantity shipped by U.S. producers and importers to steel service centers or distributors, by periods indicated, October 1986 - March 1987

(Dollars per ton)

Period	Range	Lowest price		Average price of total quantity shipped	
			Weighted average	Range	Weighted average
U.S. producers					
1986:					
October-----	1,854 - 2,280		2,098	2,082 - 2,448	2,187
November-----	1,927 - 2,190		2,095	2,024 - 2,270	2,190
December-----	***		***	***	***
1987:					
January-----	1,943 - 2,130		2,060	2,174 - 2,320	2,224
February-----	2,000 - 2,295		2,026	2,044 - 2,465	2,166
March-----	1,916 - 2,280		2,039	2,034 - 2,370	2,174
U.S. importers					
1986:					
Oct.-Dec.-----	2,000 - 2,231		2,102	***	***
1987:					
Jan.-Mar.-----	2,002 - 2,350		2,217	***	***
17 Grade 304, cold-formed, 1 1/2" - 4 3/4", round.					

Source: Compiled from data submitted in response to questionnaires of the U.S. International Trade Commission.

Table 15b.--Stainless steel bars 1/1: Ranges and weighted averages of lowest net selling prices and average price of total quantity shipped by U.S. producers and importers to end-use customers, by periods indicated, October 1986 - March 1987.

(Dollars per ton)

Period	Range	Lowest price		Average price of total quantity shipped	
			Weighted average	Range	Weighted average
U.S. producers					
1986:					
October-----	1,980 - 4,108		2,463	2,509 - 4,108	2,977
November-----	2,180 - 2,520		2,288	2,244 - 3,259	2,822
December-----	2,026 - 2,580		2,473	2,026 - 3,379	3,045
1987:					
January-----	1,192 - 2,490		1,859	1,310 - 3,348	2,085
February-----	1,261 - 2,420		2,336	1,734 - 3,292	2,397
March-----	1,261 - 2,570		2,202	1,772 - 3,477	2,881
U.S. importers					
1986:					
Oct.-Dec.-----		***	***	***	***
1987:					
Jan.-Mar.-----		***	***	***	***

1/ Grade 304, cold-formed, 1 1/2" - 4 3/4", round.

Source: Compiled from data submitted in response to questionnaires of the U.S. International Trade Commission.

Table 16a.--Stainless steel bars 1/; Ranges and weighted averages of lowest net selling prices and average price of total quantity shipped by U. S. producers and importers to steel service centers or distributors, by periods periods indicated, October 1986 - March 1987

(Dollars per ton)

Period	Range	Lowest price	Weighted average	Range	Average price of total quantity shipped	Weighted average
U.S. producers						
1986:						
October-----	2,380 - 2,580		2,421	2,462 - 3,119		2,593
November-----	***		***	2,540 - 3,301		2,574
December-----	***		***	***		***
1987:						
January-----	2,370 - 2,790		2,517	2,600 - 2,955		2,706
February-----	***		***	2,540 - 2,894		2,607
March-----	2,397 - 2,890		2,530	2,600 - 2,890		2,723
U.S. importers						
1986:						
Oct.-Dec.-----	-		-	-		-
1987:						
Jan.-Mar.-----	-		-	-		-

1/ Grade 303, cold-formed, 20/32" - 31/32", round.

Source: Compiled from data submitted in response to questionnaires of the U.S. International Trade Commission.

Table 16b.--Stainless steel bars 1/; Ranges and weighted averages of lowest net selling prices and average price of total quantity shipped by U.S. producers and importers to end-use customers, by periods indicated, October 1986 - March 1987

(Dollars per ton)

Period	Range	Lowest price	Weighted average	Range	Average price of total quantity shipped	Weighted average
U.S. producers						
1986:						
October-----	2,240 - 3,360		3,193	2,941 - 4,204		3,609
November-----	2,580 - 3,140		2,910	3,050 - 4,407		3,584
December-----	2,484 - 3,480		3,041	***		***
1987:						
January-----	2,434 - 3,360		3,116	2,612 - 4,033		3,535
February-----	2,580 - 3,380		2,957	***		***
March-----	2,484 - 3,190		2,918	2,790 - 4,207		3,484
U.S. importers						
1986:						
Oct.-Dec.-----		***	***		***	***
1987:						
Jan.-Mar.-----		***	***		***	***

1/ Grade 303, cold-formed, 20/32" - 31/32", round.

Source: Compiled from data submitted in response to questionnaires of the U.S. International Trade Commission.

Table 17a.--Stainless steel bars 1/2: Ranges and weighted averages of lowest net selling prices and average price of total quantity shipped by U.S. producers and importers to steel service centers or distributors, by periods indicated, October 1986 - March 1987

(Dollars per ton)

Period	Range	Lowest price	Weighted average	Range	Average price of total quantity shipped	Weighted average
U.S. producers						
1986:						
October-----		***	***		***	***
November-----		***	***		***	***
December-----		***	***		***	***
1987:						
January-----	2,040 - 2,180		2,099	2,100 - 2,180		2,131
February-----	1,820 - 2,061		1,987		***	***
March-----	1,962 - 2,890		2,237		***	***
U.S. importers						
1986:						
Oct.-Dec.----		***	***	1,887 - 2,710		1,989
1987:						
Jan.-Mar.----		***	***	1,818 - 2,680		1,956

1/ Grade 304, hot-rolled, 1 1/2" - 4 3/4", round.

Source: Compiled from data submitted in response to questionnaires of the U.S. International Trade Commission.

Table 17b.--Stainless steel bars 1/; Ranges and weighted averages of lowest net selling prices and average price of total quantity shipped by U.S. producers and importers to end-use customers, by periods indicated, October 1986 - March 1987

(Dollars per ton)

Period	Range	Lowest price		Average price of total quantity shipped	
			Weighted average	Range	Weighted average
U.S. producers					
1986:					
October-----	1,142 - 3,760		1,852	1,142 - 3,760	2,091
November-----	2,100 - 2,815		2,291	2,130 - 2,700	2,452
December-----	1,600 - 3,216		1,848	2,000 - 3,216	2,128
1987:					
January-----	630 - 2,346		1,478	900 - 1,142	1,352
February-----	***		***	1,108 - 2,644	1,951
March-----	1,096 - 2,500		1,856	1,096 - 2,690	2,150
U.S. importers					
1986:					
Oct.-Dec.-----	--		--	--	--
1987:					
Jan.-Mar.-----	--		--	--	--

1/ Grade 304, hot-rolled, 1 1/2" - 4 3/4", round.

Source: Compiled from data submitted in response to questionnaires of the U.S. International Trade Commission.

Table 18a.--Stainless steel bars 1/2: Ranges and weighted averages of lowest net selling prices and average price of total quantity shipped by U.S. producers and importers to steel service centers or distributors, by periods indicated, October 1986 - March 1987

(Dollars per ton)

Period	Range	Lowest price	Weighted average	Range	Average price of total quantity shipped	Weighted average
U.S. producers						
1986:						
October-----		***	***		***	***
November-----		***	***		***	***
December-----	1,400 - 2,140		1,874	1,400 - 2,140		1,880
1987:						
January-----	1,692 - 2,140		1,940		***	***
February-----	1,617 - 2,140		1,782		***	***
March-----		***	***		***	***
U.S. importers						
1986:						
Oct.-Dec.-----		***	***		***	***
1987:						
Jan.-Mar.-----		***	***		***	***

1/ Grade 410, hot-rolled, 1 1/2" - 4 3/4", round.

Source: Compiled from data submitted in response to questionnaires of the U.S. International Trade Commission.

Table 18b.--Stainless steel bars 17: Ranges and weighted averages of lowest net selling prices and average price of total quantity shipped by U.S. producers and importers to end-use customers, by periods indicated, October 1986 - March 1987

(Dollars per ton)

Period	Range	Lowest price		Average price of total quantity shipped	
			Weighted average	Range	Weighted average
U.S. producers					
1986:					
October-----		***	***	1,380 - 3,709	2,921
November-----		***	***	***	***
December-----		***	***	***	***
1987:					
January-----	2,400 - 3,040		2,740	2,560 - 3,284	3,090
February-----	1,260 - 3,060		2,237	1,260 - 3,631	3,190
March-----	1,140 - 3,034		2,212	1,520 - 3,514	3,098
U.S. importers					
1986:					
Oct.-Dec.-----	-		-	-	-
1987:					
Jan.-Mar.-----	-		-	-	-

17 Grade 410, hot-rolled, 1 1/2" - 4 3/4", round.

Source: Compiled from data submitted in response to questionnaires of the U.S. International Trade Commission.

Table 19.--Stainless steel wire rod 1/2: Ranges and weighted averages of lowest net selling prices and average price of total quantity shipped by U.S. producers and importers to end-use customers, by periods indicated, October 1986 - March 1987

(Dollars per ton)

Period	Range	Lowest price	Weighted average	Range	Average price of total quantity shipped	Weighted average
U.S. producers						
1986:						
October-----		***	***	1,663 - 4,000		1,790
November-----		***	***	1,704 - 1,946		1,769
December-----	1,160 - 3,750		2,145	1,652 - 3,750		1,759
1987:						
January-----	1,620 - 1,740		1,647	1,707 - 1,873		1,779
February-----	1,621 - 1,700		1,660	1,704 - 1,866		1,786
March-----	1,160 - 1,720		1,680	1,698 - 1,820		1,737
U.S. importers						
1986:						
Oct.-Dec.-----		***	***	***		***
1987:						
Jan.-Mar.-----	1,607 - 1,958		1,661	1,622 - 1,958		1,717

1/ Grades 302 or 304, .217" - .250", round.

Source: Compiled from data submitted in response to questionnaires of the U.S. International Trade Commission.

Table 20.--Alloy tool steel bars 1/; Ranges and weighted averages of lowest net selling prices and average price of total quantity shipped by U.S. producers and importers to end-use customers, by periods indicated, October 1986 - March 1987

(Dollars per ton)

Period	Range	Lowest price		Average price of total quantity shipped	
			Weighted average	Range	Weighted average
U.S. producers					
1986:					
October-----	1,956 - 4,000		2,196	***	***
November-----	1,956 - 4,980		2,234	***	***
December-----	***		***	2,120 - 2,985	2,442
1987:					
October-----	1,960 - 3,980		2,231	***	***
November-----	1,958 - 3,360		2,156	2,080 - 3,593	2,662
December-----	1,960 - 6,960		2,459	2,300 - 7,310	3,579
U.S. importers					
1986:					
Oct.-Dec.-----		***	***	***	***
1987:					
Jan.-Mar.-----	1,900 - 3,140		2,113	***	***

1/ Grade H-13, annealed, rough-turned, 3 1/8" - 5 1/16", round.

Source: Compiled from data submitted in response to questionnaires of the U.S. International Trade Commission.

Table 21.--Alloy tool steel bars 1/2: Ranges and weighted averages of lowest net selling prices and average price of total quantity shipped by U.S. producers and importers to end-use customers, by periods indicated, October 1986 - March 1987

(Dollars per ton)

Period	Range	Lowest price	Weighted average	Range	Average price of total quantity shipped	Weighted average
U.S. producers						
1986:						
October-----	5,400 - 7,200		5,902	5,847 - 8,026		6,265
November-----	5,300 - 7,200		5,950	5,903 - 7,634		6,371
December-----	5,400 - 7,200		5,841	6,100 - 7,951		6,856
1987:						
October-----	5,158 - 7,000		6,238	5,713 - 7,232		6,284
November-----	5,293 - 7,000		6,063	5,836 - 7,320		6,209
December-----	5,300 - 6,860		5,967	5,683 - 7,207		6,241
U.S. importers						
1986:						
Oct.-Dec.-----	5,665 - 6,620		5,796	5,665 - 6,754		6,013
1987:						
Jan.-Mar.-----	***		***	***		***

1/ Grade M-2, annealed, centerless ground or rough turned, 1 13/16" - 3", round.

Source: Compiled from data submitted in response to questionnaires of the U.S. International Trade Commission.

Table 22.--Alloy tool steel bars 1/2: Ranges and weighted averages of lowest net selling prices and average price of total quantity shipped by U.S. producers and importers to end-use customers, by periods indicated, October 1986 - March 1987

(Dollars per ton)

Period	Range	Lowest price		Average price of total quantity shipped	
			Weighted average	Range	Weighted average
U.S. producers					
1986:					
October-----		***	***	***	***
November-----		***	***	***	***
December-----		***	***	***	***
1987:					
October-----		***	***	2,400 - 5,300	2,948
November-----		***	***	***	***
December-----		***	***	2,400 - 3,780	3,011
U.S. importers					
1986:					
Oct.-Dec.-----		***	***	2,906 - 3,625	3,488
1987:					
Jan.-Mar.-----		***	***	***	***

1/ Grade D-2, annealed, rough turned, 4 1/16" - 6", round.

Source: Compiled from data submitted in response to questionnaires of the U.S. International Trade Commission.

Table 23.--Alloy tool steel bars 1/; Ranges and weighted averages of lowest net selling prices and average price of total quantity shipped by U.S. producers and importers to end-use customers, by periods indicated, October 1986 - March 1987

(Dollars per ton)

Period	Range	Lowest price	Weighted average	Range	Average price of total quantity shipped	Weighted average
U.S. producers						
1986:						
October-----		***	***	2,760 - 6,493		4,302
November-----		***	***		***	***
December-----	2,700 - 5,300		3,314	2,760 - 5,846		4,338
1987:						
October-----		***	***	4,640 - 5,878		5,427
November-----		***	***	4,628 - 5,784		5,356
December-----	3,257 - 5,440		4,784	4,633 - 6,118		5,778
U.S. importers						
1986:						
Oct.-Dec.-----		***	***		***	***
1987:						
Jan.-Mar.-----		***	***		***	***

1/ Grade D-2, annealed, cold finish, decarb free, 2" - 2 1/2" thick, 3" - 4" wide, flat.

Source: Compiled from data submitted in response to questionnaires of the U.S. International Trade Commission.

Table 24.--Certain stainless steel and alloy tool steel: U.S. importers' unfilled orders from foreign sources, by types, as of December 31, 1986 and March 31, 1987

(In tons)

Date	Stainless steel				Alloy tool steel, all forms	All products subject to relief
	Sheets and strip	Plate	Bar	Rod		
1986:						
Dec. 31-----	17,361	1,906	4,643	2,984	7,364	34,258
1987:						
Mar. 31-----	21,324	2,514	3,842	2,545	7,641	37,866

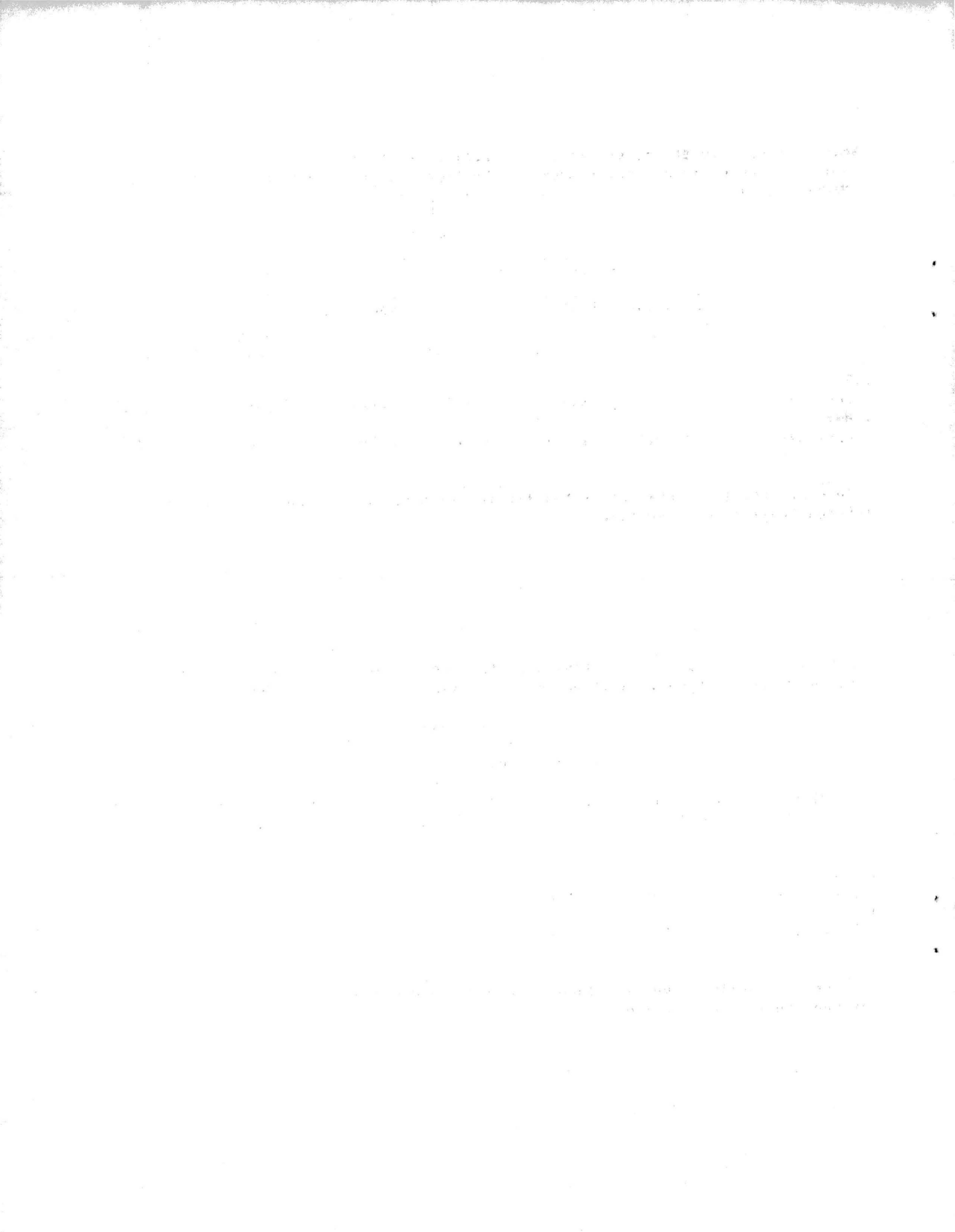
Source: Compiled from data submitted in response to questionnaires of the U.S. International Trade Commission.

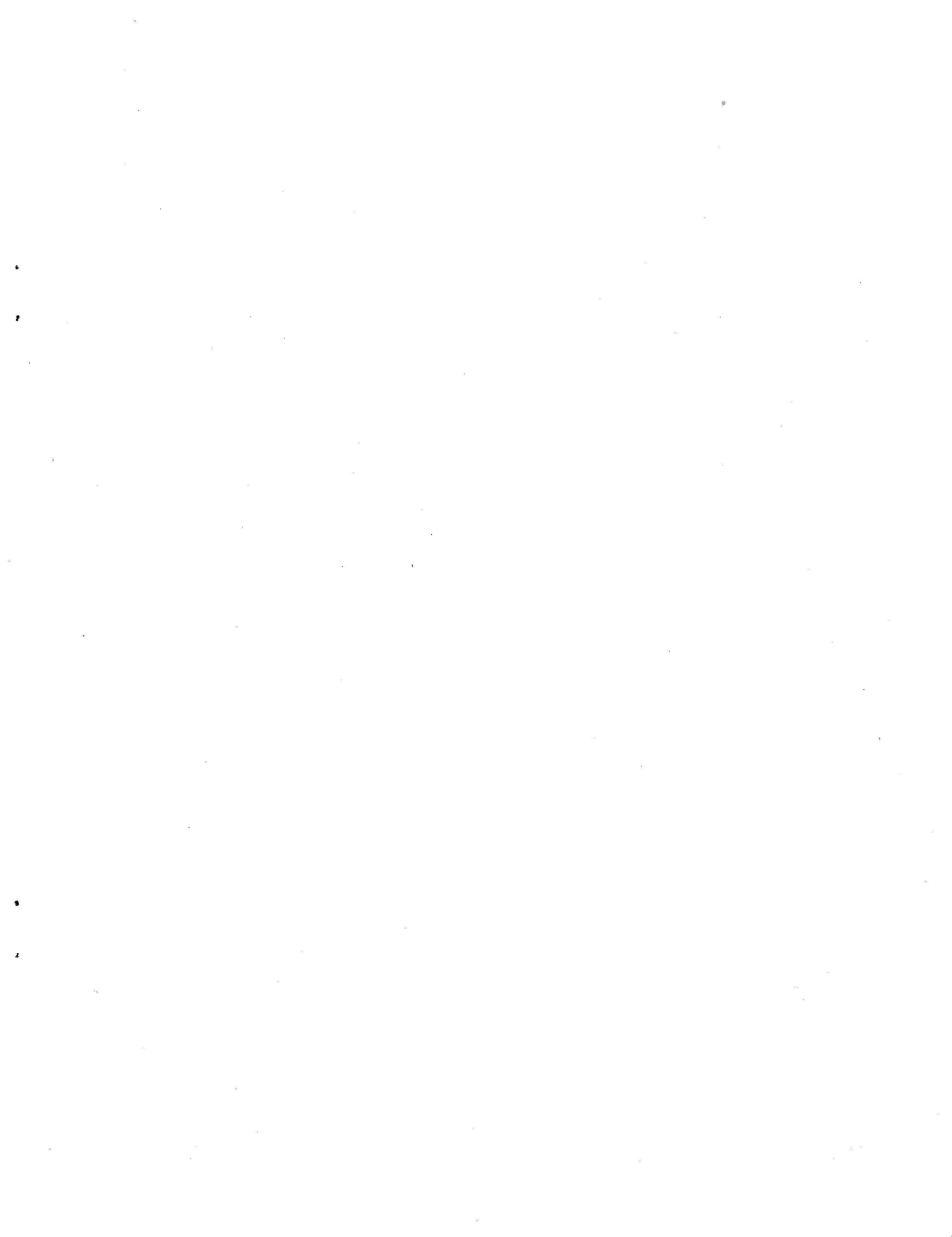
Table 25.--Certain stainless steel and alloy tool steel: U.S. importers' inventories, by types, as of December 31, 1986 and March 31, 1987

(In tons)

Date	Stainless steel				Alloy tool steel, all forms	All products subject to relief
	Sheets and strip	Plate	Bar	Rod		
1986:						
Dec. 31-----	4,004	***	6,153	***	9,263	21,263
1987:						
Mar. 31-----	3,551	***	5,557	***	8,628	19,589

Source: Compiled from data submitted in response to questionnaires of the U.S. International Trade Commission.





UNITED STATES
INTERNATIONAL TRADE COMMISSION
WASHINGTON, D.C. 20436

OFFICIAL BUSINESS

ADDRESS CORRECTION REQUESTED

Postage And Fees Paid
U.S. International Trade Commission



ITC-653

MARK HERLACH
COUDERT BROS.
1 FARRAGUT SQ. SOUTH
WASHINGTON DC 20006

ADDRESS CHANGE

- Remove from List
 Change as Shown
Please detach address
label and mail to address
shown above.