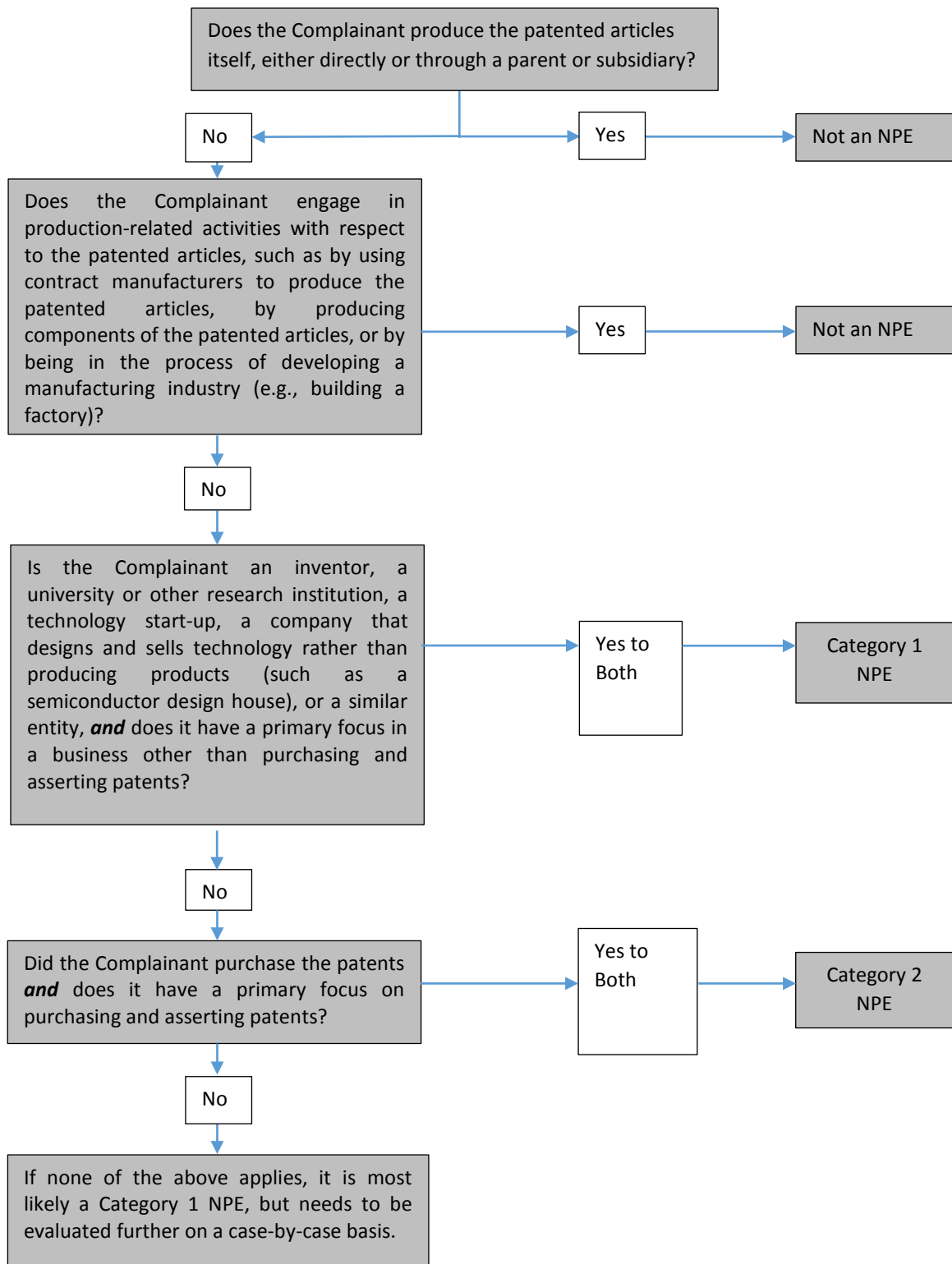


## Flowchart Demonstrating How the Commission Evaluates Whether a Complainant Is Classified as an NPE for Statistical Purposes<sup>1</sup>



<sup>1</sup> The classification of an entity as Category 1 NPE, Category 2 NPE, or non-NPE is conducted based on the complaint and submissions received by the Commission at the time an investigation is instituted. This flowchart is provided to demonstrate decision points employed by the Commission in making its classification decision. The Commission's classification of an entity as an NPE or a non-NPE is solely for statistical purposes.