

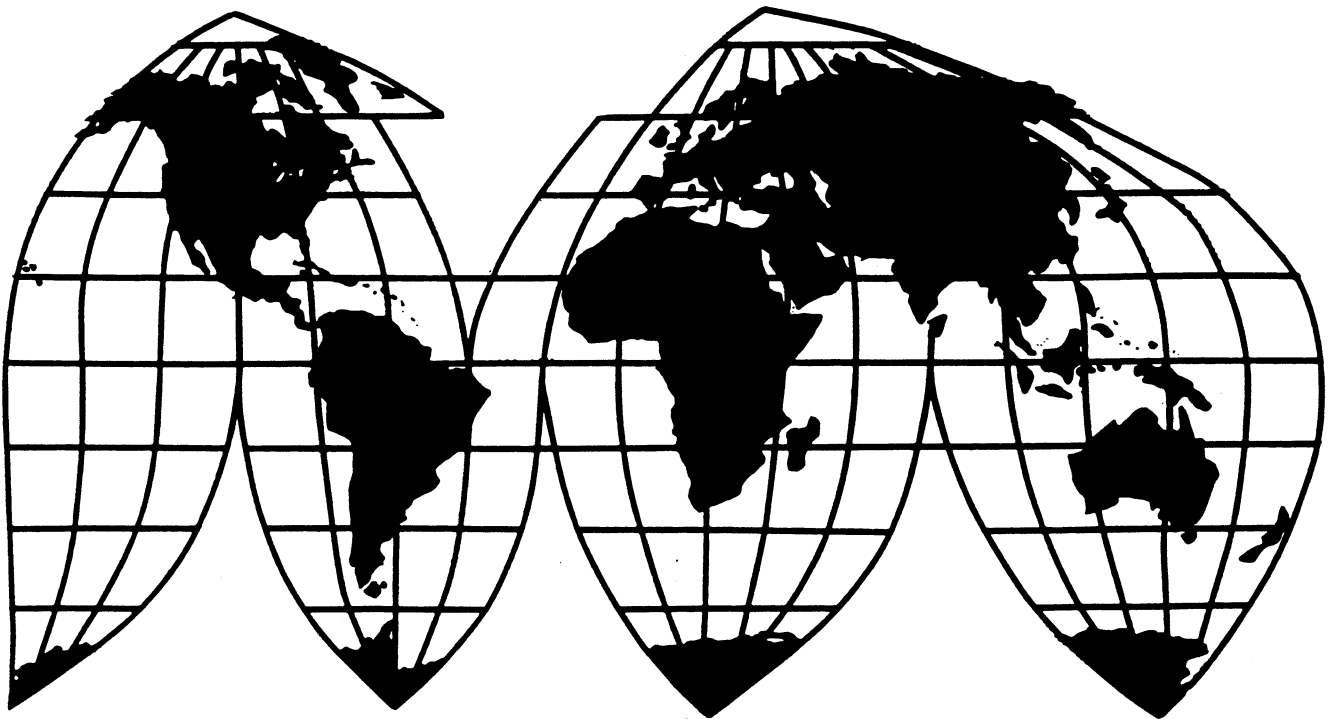
Monitoring of U.S. Imports of Tomatoes

Investigation No. 332-350

Publication 2912

July 1995

U.S. International Trade Commission



Washington, DC 20436

U.S. International Trade Commission

COMMISSIONERS

Peter S. Watson, Chairman

Janet A. Nuzum

David B. Rohr

Don E. Newquist

Carol T. Crawford

Lynn M. Bragg

Robert A. Rogowsky
Director of Operations

Vern Simpson
Director of Industries

This report was principally prepared by

Timothy P. McCarty and Lee Frankel
Office of Industries

With assistance from
Brenda Young, Elisa Jackson, and Janice Wayne
Office of Industries

Under the direction of
Lowell Grant, Chief
Fruit, Vegetable, and Specialty Products Branch

Cathy L. Jabara, Chief
Agriculture and Forest Products Division

**Address all communications to
Secretary to the Commission
United States International Trade Commission
Washington, DC 20436**

U.S. International Trade Commission

Washington, DC 20436

Monitoring of U.S. Imports of Tomatoes



Publication 2912

July 1995

PREFACE

Section 316 of the North American Free-Trade Agreement Implementation Act (NAFTA Implementation Act), Public Law 103-182, requires the U.S. International Trade Commission (Commission) to monitor U.S. imports of "fresh or chilled tomatoes" and "fresh or chilled peppers, other than chili peppers," until January 1, 2009. As a result, the Commission instituted investigation No. 332-350, Monitoring of U.S. Imports of Tomatoes, and investigation No. 332-351, Monitoring of U.S. Imports of Peppers, under section 332(g) of the Tariff Act of 1930 (19 U.S.C. 1332(g)). This report on the Commission's monitoring investigation covers tomatoes for fresh-market use and for processing. The purpose of this monitoring is to permit the Commission to conduct an expedited investigation and, if appropriate, recommend to the President provisional relief should a petition requesting such relief be filed under section 302 of the NAFTA Implementation Act with respect to imports from Canada or Mexico or with respect to a petition for relief from all countries under section 202 of the Trade Act of 1974.¹ Generally, such provisional relief would remain in effect pending completion of the investigation under section 302 or 202.

This report contains statistical information gathered by the Commission on the U.S. tomato industry in the course of its monitoring. This information includes (1) apparent U.S. consumption, (2) U.S. imports, (3) U.S. exports, and (4) industry published data (including U.S. and Mexican production and

¹ The Commission instituted investigation No. TA-201-64 under section 202 of the Trade Act of 1974, following the receipt of a petition filed on March 29, 1995, on behalf of the Florida Tomato Exchange, and the constituent members thereof (95 FR 16883). The Commission made a negative determination with regard to provisional relief on April 19, 1995 (95 FR 20506). For additional information, see the Commission's report, *Fresh Winter Tomatoes*, USITC publication No. 2881, Apr. 1995. The petitioner subsequently withdrew the petition on May 4, 1995, and the Commission terminated the investigation (95 FR 25248).

planted and harvested area, U.S. weekly arrivals and shipping point quantities, average U.S. retail and shipper prices, average Mexico City monthly wholesale prices, and U.S. and Mexican cost-of-production estimates). The information presented in this report on the U.S. tomato industry was obtained from a number of sources, including the U.S. Department of Agriculture, the U.S. Department of Commerce, and the University of Florida Cooperative Extension Service. This report covers 1990-94 data and partial-year data for 1995.

CONTENTS

	<i>Page</i>
Preface	i
Highlights	1
 Figures	
1. Fresh-market tomatoes: Seasonal index of U.S. imports from Mexico, 1990-94	10
2. Fresh-market tomatoes: Weekly shipments from all sources, by weeks, Dec. 3-June 3, 1989/90-1993/94 5-year average and 1994/95	36
3. Fresh-market tomatoes: Weekly shipments from Florida, by weeks, Dec. 3-June 3, 1989/90-1993/94 5-year average and 1994/95	39
4. Fresh-market tomatoes: Weekly shipments from Mexico, by weeks, Dec. 3-June 3, 1989/90-1993/94 5-year average and 1994/95	42
5. Fresh-market tomatoes: Tuesday F.O.B. shipping prices, Florida, Nov. 29-May 30, 1989/90-1993/94 5-year average and 1994/95, mature green, extra large style, 25-pound carton	55
6. Fresh-market tomatoes: Tuesday F.O.B. shipping prices, Nogales, AZ, Jan. 3-May 2, 1989/90-1993/94 5-year average and 1994/95, improved vine-ripe varieties, 2-layer 4x5 pack	59
7. Fresh-market tomatoes: Seasonal index of U.S. average retail prices, 1990-94	65
 Tables	
<i>Consumption</i>	3
1. Fresh-market tomatoes: U.S. production, exports of domestic merchandise, imports for consumption, and apparent U.S. consumption, 1990-94	4
2. Processed tomatoes: U.S. production, exports of domestic merchandise, and imports for consumption, 1990-94	5
<i>Imports</i>	7
3. Fresh-market tomatoes: U.S. imports for consumption, by principal sources, 1990-94	8
4. Fresh-market tomatoes: U.S. imports for consumption from Mexico, by major ports of entry, Jan. 1990-May 1995	9
5. Processed tomatoes: U.S. imports for consumption, by principal sources, 1990-94	11
<i>Exports</i>	13
6. Fresh-market tomatoes: U.S. exports of domestic merchandise, by principal markets, 1990-94	14
7. Processed tomatoes: U.S. exports of domestic merchandise, by principal markets, 1990-94	15

CONTENTS--Continued

Page

Tables--Continued

<i>Production area and costs of production</i>	17
8. Tomatoes: Planted and harvested area, production, and production value data for the United States and Mexico, 1990-94	18
9. Fresh-market tomatoes: U.S. harvested area, production, yield, and production value data, by selected States and total, 1990-94	20
10. Processing tomatoes: U.S. harvested area, production, yield, and production value data, by selected States and total, 1990-94	22
11. Fresh-market tomatoes: Florida harvested area and share of total, by production district, 1985/86 to 1993/94 seasons . . .	24
12. Fresh-market tomatoes: Sinaloa, Mexico, harvested area, 1985/86 to 1993/94	25
13. Estimated production costs for fresh-market tomatoes grown in the Dade County, FL, area, 1990/91 to 1993/94 seasons	26
14. Estimated production costs for fresh-market tomatoes grown in the Manatee/Ruskin, FL, area, 1990/91 to 1993/94 seasons	27
15. Estimated production costs for fresh-market tomatoes grown in the southwest Florida area, 1990/91 to 1993/94 seasons	28
16. Estimated production costs for export quality fresh-market tomatoes grown in the Sinaloa, Mexico area, 1990/91 to 1993/94 seasons	29
<i>Shipments and arrivals</i>	31
17. Fresh-market tomatoes: Weekly quantities available to major shipping points, by sources, Jan. 1-Dec. 31, 1994	32
18. Fresh-market tomatoes: Weekly quantities available at major shipping points, by sources, Jan. 7-June 3, 1995	34
19. Fresh-market tomatoes: Weekly shipments from all sources, by weeks, Dec. 3-June 3, 1989/90 to 1994/95	35
20. Fresh-market tomatoes: Percent of 1989/90-1993/94 5-year average total reported U.S. weekly shipments from all sources, by weeks, Dec. 3-June 3, 1989/90 to 1994/95	37
21. Fresh-market tomatoes: Weekly shipments from Florida, by weeks, Dec. 3-June 3, 1989/90 to 1994/95	38
22. Fresh-market tomatoes: Percent of total reported U.S. weekly shipments from Florida, by weeks, Dec. 3-June 3, 1989/90 to 1994/95	40
23. Fresh-market tomatoes: Weekly shipments from Mexico, by weeks, Dec. 3-June 3, 1989/90 to 1994/95	41
24. Fresh-market tomatoes: Percent of total reported U.S. weekly shipments from Mexico, by weeks, Dec. 3-June 3, 1989/90 to 1994/95	43

CONTENTS--Continued

Page

Tables--Continued

25. Fresh-market tomatoes: U.S. shipments from selected sources and share of total, by selected time periods, 1990/91 to 1993/94 seasons	44
26. Fresh-market tomatoes: Weekly arrivals at Boston and New York City wholesale terminal markets, by markets and by sources, Jan. 7-Dec. 30, 1994	45
27. Fresh-market tomatoes: Weekly arrivals at Boston and New York City wholesale terminal markets, by markets and by sources, Jan. 6-June 2, 1995	46
28. Fresh-market tomatoes: Weekly arrivals at Philadelphia and Chicago wholesale terminal markets, by markets and by sources, Jan. 7-Dec. 30, 1994	47
29. Fresh-market tomatoes: Weekly arrivals at Philadelphia and Chicago wholesale terminal markets, by markets and by sources, Jan. 6-June 2, 1995	48
30. Fresh-market tomatoes: Weekly arrivals at Dallas and Los Angeles wholesale terminal markets, by markets and by sources, Jan. 7-Dec. 30, 1994	49
31. Fresh-market tomatoes: Weekly arrivals at Dallas and Los Angeles wholesale terminal markets, by markets and by sources, Jan. 6-June 2, 1995	50
32. Fresh-market tomatoes: Monthly arrivals of tomatoes in 22 cities, by sources, 1990-94	51
33. Fresh-market tomatoes: Percentage of monthly arrivals of tomatoes in 22 cities, by sources, 1990-94	52
<i>Prices</i>	53
34. Fresh-market tomatoes: Tuesday F.O.B. shipping prices, Florida, Nov. 29-May 30, 1989/90 to 1994/95, mature green extra-large style, 25-pound carton	54
35. Fresh-market tomatoes: Tuesday F.O.B. shipping prices, Florida, Nov. 29-May 30, 1989/90 to 1994/95, mature green large style, 25-pound carton	56
36. Fresh-market tomatoes: Tuesday F.O.B. shipping prices, Florida, Nov. 29-May 30, 1989/90 to 1994/95, mature green medium style, 25-pound carton	57
37. Fresh-market tomatoes: Tuesday F.O.B. shipping prices, Nogales, AZ, Jan. 3-May 2, 1989/90 to 1994/95, improved vine-ripe varieties, 2-layer 4x5 pack	58
38. Fresh-market tomatoes: Tuesday F.O.B. shipping prices, Nogales, AZ, Jan. 3-May 2, 1989/90 to 1994/95, improved vine-ripe varieties, 2-layer 5x5 pack	60
39. Fresh-market tomatoes: Tuesday F.O.B. shipping prices, Nogales, AZ, Jan. 3-May 2, 1989/90 to 1994/95, improved vine-ripe varieties, 2-layer 5x6 pack	61

CONTENTS--Continued

Page

Tables--Continued

40. Fresh-market tomatoes: Tuesday F.O.B. shipping prices, Nogales, AZ, Jan. 3-May 2, 1989/90 to 1994/95, improved vine-ripe varieties, 3-layer 6x6 pack	62
41. Fresh-market tomatoes: Tuesday F.O.B. shipping prices, Nogales, AZ, Jan. 3-May 2, 1989/90 to 1994/95, improved vine-ripe varieties, 3-layer 6x7 pack	63
42. Fresh-market tomatoes: Average retail prices, by overall U.S. average and four regions' averages, Jan. 1990-Mar. 1995	64
43. Fresh-market tomatoes: Average U.S. shipper prices, average U.S. retail prices, and average price spread, by months, Jan. 1990-Mar. 1995	66
44. Fresh-market tomatoes: Average monthly wholesale prices, F.O.B. Mexico City, pesos per kilogram and U.S. dollars per 25-pound box equivalent, Jan. 1990-May 1995	67

HIGHLIGHTS

The following are highlights of the statistical data collected on tomatoes for fresh-market use and processing for the period 1990-94.

Fresh-market tomatoes

- U.S. production of tomatoes for fresh-market use rose by 5.5 percent, by volume, from 1.5 million metric tons in 1990 to 1.6 million metric tons in 1994. In 1994, Florida and California accounted for 45.1 and 28.2 percent, respectively, of total U.S. production of tomatoes for fresh-market use. Other States with significant production included Virginia, Georgia, and South Carolina.
- U.S. harvested area for fresh-market tomatoes declined by 4.1 percent from 54,467 hectares in 1990 to 52,213 hectares in 1994. In 1994, Florida and California accounted for 37.1 and 28.3 percent, respectively, of total U.S. harvested area of tomatoes for fresh-market use.
- U.S. imports of fresh-market tomatoes increased by 9.7 percent, by volume, from 360,995 metric tons in 1990 to 395,974 metric tons in 1994, but were down by 8.9 percent, by value, from \$377.7 million in 1990 to \$343.9 million in 1994. Mexico, the source of 376,032 metric tons of U.S. imports, accounted for 95 percent, by volume, of total imports of fresh-market tomatoes in 1994.
- During 1990-94, approximately two-thirds of total U.S. imports of fresh-market tomatoes from Mexico entered through the Nogales, AZ customs district. Most of the remaining U.S. imports of fresh-market tomatoes entered through the San Diego, CA district.
- The average unit value for U.S. imports of fresh-market tomatoes fluctuated from a high of \$1.05 per kilogram in 1990 to a low of \$.72 per kilogram in 1991. In 1994, the average unit value of imports was \$.87 per kilogram.
- U.S. exports of fresh-market tomatoes increased by 16.3 percent, by volume, from 132,928 metric tons in 1990 to 154,561 metric tons in 1994, and by 41.2 percent, by value, from \$84.8 million in 1990 to \$119.8 million in 1994. Canada and Mexico were the leading markets for U.S. exports of fresh-market tomatoes in 1994, accounting for 85 and 14 percent by volume, respectively, of the total.
- During 1990-94, harvested area in Mexico of tomatoes for fresh-market use averaged 62,691 hectares annually.

- Retail prices for fresh-market tomatoes vary seasonally, with the highest prices occurring in the first two quarters of the year.

Processing tomatoes

- U.S. production of tomatoes for processing increased by 11 percent from 9.4 million metric tons in 1990 to 10.5 million metric in 1994.
- U.S. harvested area for processing tomatoes declined by 4 percent from 143,542 hectares in 1990 to 137,617 hectares in 1994.
- U.S. imports of processed tomatoes declined 18.5 percent, by volume, from 137,937 metric tons in 1990 to 112,390 metric tons in 1994, and by 34.9 percent, by value, from \$124.1 million in 1990 to \$80.8 million in 1994. Mexico, Italy, and Chile were the leading sources of processed tomatoes in 1994, accounting for 26, 20, and 20 percent, respectively, by volume of imports.
- The average unit value for U.S. imports of processed tomatoes fell irregularly during the 1990-94 period, to a recent 5-year low of \$0.72 per kilogram in 1994. Unit values of processed tomatoes from Mexico have fallen over 20 percent and, after Spain, demonstrated the largest price drop during 1990-94 of the 4 major suppliers in 1994.
- U.S. exports of processed tomatoes increased 130.6 percent, by volume, from 44,789 metric tons in 1990 to 103,303 metric tons in 1994, and by 90.6 percent, by value, from \$43.0 million in 1990 to \$82.0 million in 1994. Canada, Japan, and the Philippines were leading U.S. export markets for processed tomatoes in recent years, accounting for 62, 13, and 5 percent, respectively, by volume of exports in 1994.
- The average unit value received by growers of tomatoes for processing remained steady during 1990-94 at \$0.07 per kilogram, except in 1992, when the price was \$0.06 per kilogram.

CONSUMPTION

Table 1

Fresh-market tomatoes: U.S. production, exports of domestic merchandise, imports for consumption, and apparent U.S. consumption, 1990-94

Year	Production ¹	Exports ²	Imports ³	Apparent U.S. consumption
<u>Quantity (1,000 kilograms)</u>				
1990	1,532,227	132,928	360,995	1,760,294
1991	1,540,318	136,206	360,829	1,764,941
1992	1,774,227	166,686	196,028	1,803,569
1993	1,613,591	156,866	418,394	1,875,119
1994	<u>1,617,136</u>	<u>154,561</u>	<u>395,974</u>	<u>1,858,549</u>
<u>Value (1,000 dollars)</u>				
1990	923,393	84,828	377,680	1,216,245
1991	1,077,832	110,435	260,213	1,227,610
1992	1,396,950	140,179	145,608	1,402,379
1993	1,126,387	122,255	325,559	1,329,691
1994	<u>966,357</u>	<u>119,772</u>	<u>343,933</u>	<u>1,190,518</u>
<u>Unit value (dollars per kilogram)</u>				
1990	0.60	0.64	1.05	0.69
199170	.81	.72	.70
199279	.84	.74	.78
199370	.78	.78	.71
199460	.77	.87	.64

¹ Includes raw product intended for fresh-market use.

² Includes fresh or chilled tomatoes (*Schedule B* No. 0702.00.0000) on a fresh-weight basis.

³ Includes fresh or chilled tomatoes (*Harmonized Tariff Schedule* subheadings 0702.00.20-0702.00.60) on a fresh-weight basis.

⁴ Not meaningful.

Source: Production data compiled from official statistics of the U.S. Department of Agriculture; exports and imports compiled from official statistics of the U.S. Department of Commerce.

Table 2

Processed tomatoes: U.S. production, exports of domestic merchandise, and imports for consumption, 1990-94

Year	Production ¹	Exports ²	Imports ³
	<u>Quantity (1,000 kilograms)</u>		
1990	9,413,873	44,789	137,937
1991	9,884,536	58,005	102,324
1992	7,979,482	93,684	75,389
1993	8,796,855	111,788	81,104
1994	10,493,009	103,303	112,390
	<u>Value (1,000 dollars)</u>		
1990	702,367	43,009	124,072
1991	722,114	56,299	78,534
1992	509,413	73,846	65,675
1993	581,893	88,406	63,813
1994	716,628	81,969	80,829
	<u>Unit value (dollars per kilogram)</u>		
1990	0.07	0.96	0.90
199107	.97	.77
199206	.79	.87
199307	.79	.79
199407	.79	.72

¹ Includes raw product intended for processing.

² Includes prepared or preserved tomatoes (*Schedule B* No. 2002.10.0000, 2002.90.0060, and 2002.90.0080) on a processed-weight basis.

³ Includes frozen tomatoes (*Harmonized Tariff Schedule (HTS)* subheadings 0710.80.40-0710.80.50) on a frozen-weight basis, dried tomatoes (*HTS* subheading 0712.90.75) on a dried-weight basis, and prepared or preserved tomatoes (*HTS* subheadings 2002.10.00 and 2002.90.00) on a processed-weight basis.

Note.--Unit values for U.S. production are low, relative to those for exports and imports, because production includes only raw, not finished, product intended for processing. U.S. production of processed tomato products has not been reported for a number of years.

Source: Production data compiled from official statistics of the U.S. Department of Agriculture; exports and imports compiled from official statistics of the U.S. Department of Commerce.

IMPORTS

Table 3

Fresh-market tomatoes: U.S. imports for consumption,¹ by principal sources, 1990-94

Source	1990	1991	1992	1993	1994
<u>Quantity (1,000 kilograms)</u>					
Mexico	352,312	353,577	183,116	400,494	376,032
Canada	3,075	2,672	5,214	4,733	7,673
Netherlands	1,194	2,410	2,531	7,044	7,547
Belgium	83	612	367	2,601	2,827
Israel	2,126	1,107	1,918	2,262	1,822
Spain	15	1	2	0	21
Dominican Republic	1,404	418	559	327	16
United Kingdom	0	0	0	0	11
All other	785	32	2,321	932	24
Total	<u>360,995</u>	<u>360,829</u>	<u>196,028</u>	<u>418,394</u>	<u>395,974</u>
<u>Value (1,000 dollars)</u>					
Mexico	370,556	249,882	133,166	304,079	315,448
Canada	3,266	4,459	5,562	6,384	10,269
Netherlands	1,787	3,784	4,484	9,323	12,179
Belgium	141	1,247	746	4,212	5,128
Israel	905	532	847	1,023	803
Spain	32	2	2	0	28
Dominican Republic	529	270	301	157	7
United Kingdom	0	0	0	0	28
All other	463	37	501	381	43
Total	<u>377,680</u>	<u>260,213</u>	<u>145,608</u>	<u>325,559</u>	<u>343,933</u>
<u>Unit value (dollars per kilogram)</u>					
Mexico	1.05	0.71	0.73	0.76	0.84
Canada	1.06	1.67	1.07	1.35	1.34
Netherlands	1.50	1.57	1.77	1.32	1.61
Belgium	1.69	2.04	2.03	1.62	1.81
Israel43	.48	.44	.45	.44
Spain	2.09	1.45	1.16	-	1.31
Dominican Republic38	.65	.54	.48	.42
United Kingdom	-	-	-	-	2.41
All other59	1.17	.22	.41	1.79
Average	1.05	.72	.74	.78	.87

¹ Includes fresh or chilled tomatoes (*Harmonized Tariff Schedule* subheadings 0702.00.20-0702.00.60) on a fresh-weight basis.

Note.--Because of rounding, figures may not add to the totals shown.

Source: Compiled from official statistics of the U.S. Department of Commerce.

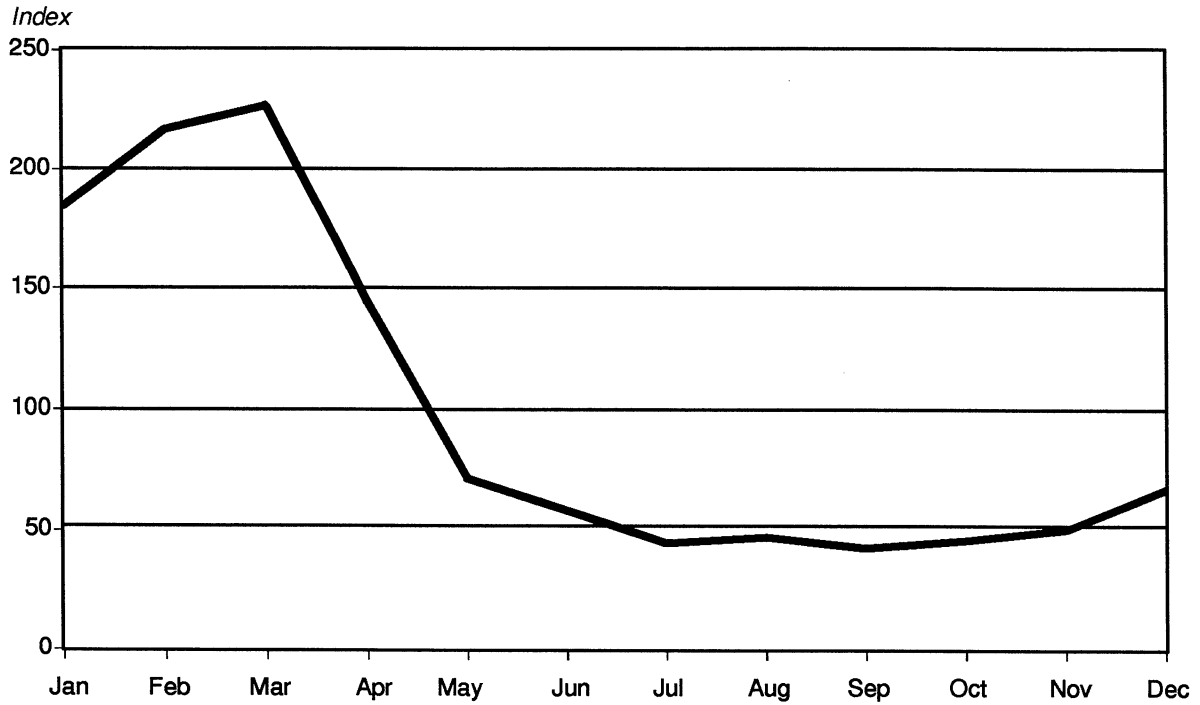
Table 4
 Fresh-market tomatoes: U.S. imports for consumption from Mexico,¹ by major ports of entry, Jan. 1990-May 1995

(1,000 kilograms)					
Year/Month	Noqales	San Diego	Laredo	All other	Total
1990:					
Jan.	62,090	5,642	980	218	68,931
Feb.	73,395	2,928	1,638	176	78,138
Mar.	73,071	983	308	178	74,540
Apr.	16,989	475	51	6	17,521
May	7,181	4,940	600	1	12,722
June	1,285	17,640	143	0	19,068
July	34	15,783	0	0	15,817
Aug.	36	10,631	31	0	10,698
Sept.	15	10,730	0	0	10,746
Oct.	2	12,307	183	0	12,491
Nov.	961	10,492	807	0	12,260
Dec.	10,003	8,676	701	0	19,380
Total	245,063	101,227	5,443	580	352,312
1991:					
Jan.	42,197	2,823	614	22	45,657
Feb.	65,051	604	279	163	66,097
Mar.	66,307	622	376	244	67,549
Apr.	56,494	1,150	408	209	58,261
May	14,508	6,922	453	81	21,963
June	4,850	13,267	290	0	18,406
July	69	10,116	0	0	10,185
Aug.	0	8,094	30	0	8,123
Sept.	0	13,252	0	0	13,252
Oct.	0	11,310	0	0	11,310
Nov.	392	17,461	856	0	18,709
Dec.	4,812	9,089	159	2	14,063
Total	254,681	94,711	3,464	721	353,577
1992:					
Jan.	30,037	3,871	483	0	34,391
Feb.	23,047	893	260	0	24,200
Mar.	16,964	246	289	2	17,502
Apr.	17,085	1,271	203	0	18,559
May	7,276	8,954	102	0	16,332
June	473	10,620	0	0	11,093
July	48	12,457	0	6	12,510
Aug.	0	13,174	0	0	13,174
Sept.	0	10,994	0	0	10,994
Oct.	0	7,290	5	0	7,295
Nov.	165	7,479	18	0	7,662
Dec.	3,879	5,362	163	0	9,404
Total	98,975	82,613	1,521	8	183,116
1993:					
Jan.	56,168	1,053	522	1	57,745
Feb.	69,434	237	159	176	70,006
Mar.	71,243	68	165	80	71,556
Apr.	59,817	909	0	55	60,780
May	20,708	4,625	255	36	25,624
June	1,938	11,228	201	0	13,367
July	0	12,547	41	24	12,612
Aug.	0	14,459	6	4	14,468
Sept.	0	14,622	26	0	14,648
Oct.	0	18,701	9	0	18,710
Nov.	336	17,214	530	0	18,080
Dec.	10,823	11,821	252	1	22,897
Total	290,467	107,484	2,167	376	400,494
1994:					
Jan.	40,929	7,787	290	22	49,028
Feb.	61,111	1,042	331	53	62,537
Mar.	83,335	39	212	18	83,604
Apr.	44,175	1,249	65	3	45,492
May	12,099	10,575	251	0	22,925
June	3,197	15,426	177	0	18,801
July	171	10,769	50	0	10,990
Aug.	0	18,830	48	0	18,878
Sept.	0	9,447	49	0	9,496
Oct.	25	13,737	44	0	13,806
Nov.	718	12,133	57	0	12,908
Dec.	18,724	8,565	276	2	27,567
Total	264,483	109,599	1,852	98	376,032
1995:					
Jan.	62,615	2,335	703	100	65,753
Feb.	88,302	1,247	930	501	90,980
Mar.	93,689	378	1,072	178	95,317
Apr.	66,107	2,604	549	583	69,843
May	24,812	11,834	522	137	37,305

¹ Includes fresh or chilled tomatoes (Harmonized Tariff Schedule subheadings 0702.00.20-0702.00.60) on a fresh-weight basis.

Source: Compiled from official statistics of the U.S. Department of Commerce.

Figure 1
Fresh-market tomatoes: Seasonal index¹ of U.S. imports from Mexico, 1990-1994



¹ The seasonal index is calculated as the average import volume for a particular month divided by the average monthly import volume for the 1990 through 1994 period. For instance, the average January import volume is 84 percent higher than the average monthly import volume for the overall period.

Source: Prepared by the staff of the U.S. International Trade Commission based on data reported by the U.S. Department of Commerce.

Table 5

Processed tomatoes: U.S. imports for consumption,¹ by principal sources, 1990-94

Source	1990	1991	1992	1993	1994
<u>Quantity (1,000 kilograms)</u>					
Mexico	24,887	28,187	8,770	20,980	29,339
Italy	17,184	17,111	13,876	17,127	22,921
Chile	33,866	22,888	24,809	17,202	22,186
Spain	8,365	4,486	5,071	3,502	11,684
Israel	20,333	15,529	9,467	10,860	9,682
Canada	2,785	627	1,607	3,265	6,910
Morocco	2,050	1,992	1,846	1,471	3,676
Turkey	4,166	3,451	2,822	2,659	2,298
All other	24,301	8,053	7,122	4,039	3,694
Total	137,937	102,324	75,389	81,104	112,390
<u>Value (1,000 dollars)</u>					
Mexico	20,459	18,135	6,432	15,492	19,146
Italy	9,417	8,169	8,703	7,628	10,168
Chile	26,097	15,582	12,695	10,554	14,957
Spain	17,868	8,985	12,264	8,856	12,772
Israel	9,923	6,490	2,924	3,524	3,250
Canada	1,803	450	912	1,677	4,163
Morocco	7,805	6,256	7,414	5,516	4,347
Turkey	2,779	1,540	1,697	2,173	3,478
All other	27,922	12,926	12,634	8,393	8,548
Total	124,072	78,534	65,675	63,813	80,829
<u>Unit value (dollars per kilogram)</u>					
Mexico	0.82	0.64	0.73	0.74	0.65
Italy55	.48	.63	.45	.44
Chile77	.68	.51	.61	.67
Spain	2.14	2.00	2.42	2.53	1.09
Israel49	.42	.31	.32	.34
Canada65	.72	.57	.51	.60
Morocco	3.81	3.14	4.02	3.75	1.18
Turkey67	.45	.60	.82	1.51
All other	1.15	1.61	1.77	2.08	2.31
Average90	.77	.87	.79	.72

¹ Includes frozen tomatoes (*Harmonized Tariff Schedule (HTS)* subheadings 0710.80.40-0710.80.50) on a frozen-weight basis, dried tomatoes (*HTS* subheading 0712.90.75) on a dried-weight basis, and prepared or preserved tomatoes (*HTS* subheadings 2002.10.00 and 2002.90.00) on a processed-weight basis.

Note.--Because of rounding, figures may not add to the totals shown.

Source: Compiled from official statistics of the U.S. Department of Commerce.

EXPORTS

Table 6

Fresh-market tomatoes: U.S. exports of domestic merchandise,¹ by principal markets, 1990-94

Market	1990	1991	1992	1993	1994
<i>Quantity (1,000 kilograms)</i>					
Canada	125,042	124,674	148,296	137,738	130,959
Mexico	4,848	7,994	15,598	17,650	21,896
Hong Kong	1,619	1,280	1,401	606	1,130
Bahamas	97	66	15	54	184
Antigua	59	77	101	120	127
United Kingdom	152	261	416	0	77
Aruba	16	0	0	0	76
Argentina	0	0	0	0	19
All other	1,096	1,854	860	697	95
Total	132,928	136,206	166,686	156,866	154,561
<i>Value (1,000 dollars)</i>					
Canada	80,419	101,924	128,657	111,019	104,589
Mexico	2,138	4,295	9,734	10,178	13,933
Hong Kong	860	706	749	350	691
Bahamas	90	84	16	44	108
Antigua	35	70	68	47	119
United Kingdom	196	725	300	0	120
Aruba	3	0	0	0	50
Argentina	0	0	0	0	13
All other	1,087	2,631	655	616	150
Total	84,828	110,435	140,179	122,255	119,772
<i>Unit value (dollars per kilogram)</i>					
Canada	0.64	0.82	0.87	0.81	0.80
Mexico44	.54	.62	.58	.64
Hong Kong53	.55	.54	.58	.61
Bahamas93	1.26	1.05	.82	.59
Antigua60	.90	.67	.39	.94
United Kingdom	1.29	2.78	.72	-	1.57
Aruba16	-	-	-	.66
Argentina	-	-	-	-	.66
All other99	1.42	.76	.88	1.59
Average64	.81	.84	.78	.77

¹ Includes fresh or chilled tomatoes (*Schedule B* No. 0702.00.0000) on a fresh-weight basis.

Note.--Because of rounding, figures may not add to the totals shown.

Source: Compiled from official statistics of the U.S. Department of Commerce.

Table 7

Processed tomatoes: U.S. exports of domestic merchandise,¹ by principal markets, 1990-94

Market	1990	1991	1992	1993	1994
<u>Quantity (1,000 kilograms)</u>					
Canada	28,087	36,069	55,466	71,786	64,200
Japan	6,764	9,102	9,652	8,484	13,241
Philippines	955	478	3,758	4,021	4,704
Mexico	738	1,046	8,369	3,568	3,314
South Korea	3,195	2,854	5,667	5,064	3,045
Taiwan	89	72	353	425	2,153
Australia	427	255	343	8,225	2,036
Hong Kong	468	835	834	785	1,692
All other	4,068	7,293	9,243	9,429	8,917
Total	44,789	58,005	93,684	111,788	103,303
<u>Value (1,000 dollars)</u>					
Canada	26,866	36,443	44,890	56,393	51,311
Japan	6,586	8,372	8,129	7,179	10,090
Philippines	832	382	2,808	2,819	3,464
Mexico	589	735	5,362	2,409	2,535
South Korea	3,329	2,691	4,621	4,508	2,618
Taiwan	85	57	232	376	1,543
Australia	389	188	244	6,326	1,455
Hong Kong	497	759	695	714	1,429
All other	3,836	6,672	6,864	7,682	7,524
Total	43,009	56,299	73,846	88,406	81,969
<u>Unit value (dollars per kilogram)</u>					
Canada	0.96	1.01	0.81	0.79	0.80
Japan97	.92	.84	.85	.76
Philippines87	.80	.75	.70	.74
Mexico80	.70	.64	.68	.77
South Korea	1.04	.94	.82	.89	.86
Taiwan96	.78	.66	.88	.72
Australia91	.74	.71	.77	.71
Hong Kong	1.06	.91	.83	.91	.84
All other94	.91	.74	.81	.84
Average96	.97	.79	.79	.79

¹ Includes prepared or preserved tomatoes (Schedule B No. 2002.10.0000, 2002.90.0060, and 2002.90.0080) on a processed-weight basis.

Note.--Because of rounding, figures may not add to the totals shown.

Source: Compiled from official statistics of the U.S. Department of Commerce.

PRODUCTION AREA AND COSTS OF PRODUCTION

Table 8

Tomatoes: Planted and harvested area, production, and production value data for the United States and Mexico, 1990-94

	1990	1991	1992	1993	1994
<u>Area (hectares)</u>					
Area planted:					
Fresh-market use:					
United States	57,648	54,834	55,381	56,028	53,757
Mexico	66,002	61,000	72,000	67,000	65,000
Processing use:					
United States	148,466	148,830	112,190	128,097	140,704
Mexico	9,256	7,000	8,000	8,000	7,500
Total:					
United States	206,114	203,664	167,571	184,125	194,461
Mexico	75,258	68,000	80,000	75,000	72,500
Area harvested:					
Fresh-market use:					
United States	54,467	53,301	53,382	54,491	52,213
Mexico	63,957	58,000	69,000	62,500	60,000
Processing use:					
United States	143,542	144,060	110,847	124,429	137,617
Mexico	7,756	500	7,000	7,500	6,500
Total:					
United States	198,009	197,361	164,229	178,920	189,830
Mexico	71,713	58,500	76,000	70,000	66,500
<u>Quantity (1,000 metric tons)</u>					
Production:					
Fresh-market use:					
United States	1,533	1,542	1,771	1,610	1,614
Mexico	1,279	1,350	1,370	1,200	1,200
Processing use:					
United States	9,394	9,864	7,963	8,778	10,471
Mexico	365	52	350	360	325
Total:					
United States	10,927	11,406	9,734	10,388	12,085
Mexico	1,644	1,402	1,720	1,560	1,525
<u>Yield (metric tons per hectare)</u>					
Yield:					
Fresh-market use:					
United States	28.15	28.92	33.17	29.55	30.91
Mexico	20.00	23.28	19.86	19.20	20.00
Processing use:					
United States	65.45	68.47	71.84	70.55	76.09
Mexico	47.06	104.00	50.00	48.00	50.00
All uses:					
United States	55.18	57.79	59.27	58.06	63.66
Mexico	22.92	23.97	22.63	22.29	22.93

See footnotes at end of table.

Table 8--Continued

Tomatoes: Planted and harvested area, production, and production value data for the United States and Mexico, 1990-94

	1990	1991	1992	1993	1994
<u>Value (Million dollars)</u>					
Production:					
Fresh-market use:					
United States	920	1,079	1,397	1,126	966
Mexico	(¹)	(¹)	(¹)	(¹)	177
Processing use:					
United States	702	722	509	582	717
Mexico	(¹)	(¹)	(¹)	(¹)	(¹)
Total:					
United States	1,625	1,800	1,906	1,708	1,683
Mexico	(¹)	(¹)	(¹)	(¹)	(¹)
<u>Average unit value (dollars per kilogram)</u>					
Production:					
Fresh-market use:					
United States	0.60	0.70	0.79	0.70	0.60
Mexico	(¹)	(¹)	(¹)	(¹)	.15
Processing use:					
United States07	.07	.06	.07	.07
Mexico	(¹)	(¹)	(¹)	(¹)	(¹)
Average:					
United States15	.16	.19	.17	.14
Mexico	(¹)	(¹)	(¹)	(¹)	(¹)

¹ Not available.

Note.--Data reported in acres were converted to hectares, using a conversion factor of 2.471; data reported in pounds were converted to kilograms, using a factor of 2.20462, and to metric tons, using a factor of 2,204.62.

Source: Compiled from official statistics of the Foreign Agricultural Service, U.S. Department of Agriculture, and from *Vegetables* series, National Agricultural Statistics Service, U.S. Department of Agriculture, Washington, DC, 1990 Summary (June 1991), VG1-2(91), 1992 Summary (Jan. 1993), VG 1-2(93), and 1994 Summary (Jan. 1995), VG 1-2(95).

Table 9

Fresh-market tomatoes: U.S. harvested area, production, yield, and production value data, by selected States and total, 1990-94

State	1990	1991	1992	1993	1994
<u>Area (hectares)</u>					
Area harvested:					
Florida	20,558	18,696	20,841	21,367	19,384
California	15,378	16,187	14,569	15,176	14,771
New Jersey	2,023	1,942	1,942	1,821	1,821
Tennessee	1,740	1,902	1,821	1,781	1,578
Pennsylvania	1,902	1,740	1,700	1,659	1,538
Georgia	1,416	1,052	1,174	1,416	1,416
South Carolina	1,497	1,497	1,538	1,295	1,416
Virginia	1,376	1,416	1,295	1,214	1,376
Ohio	1,174	1,295	1,214	1,214	1,376
All other	7,402	7,572	7,288	7,547	7,535
Total	54,467	53,301	53,382	54,491	52,213
<u>Quantity (metric tons)</u>					
Production:					
Florida	691,275	733,459	946,103	778,365	727,880
California	439,531	426,377	457,221	459,262	455,316
New Jersey	26,082	21,772	27,216	26,535	29,620
Tennessee	39,009	38,374	32,659	31,933	40,687
Pennsylvania	27,714	15,604	32,386	27,896	32,749
Georgia	39,689	35,970	48,035	44,452	58,740
South Carolina	56,245	52,889	48,262	52,254	47,627
Virginia	65,544	65,091	59,511	46,266	69,400
Ohio	24,358	29,030	20,412	37,421	32,386
All other	123,695	123,105	98,702	105,823	119,340
Total	1,533,142	1,541,670	1,770,507	1,610,208	1,613,746
<u>Unit value (dollars per metric ton)</u>					
Yield:					
Florida	0.60	0.78	0.87	0.78	0.59
California	0.62	0.55	0.75	0.58	0.55
New Jersey	0.64	0.57	0.79	0.71	0.97
Tennessee	0.53	0.46	0.46	0.60	0.60
Pennsylvania	0.44	0.48	0.47	0.47	0.44
Georgia	0.52	0.94	0.75	0.57	0.60
South Carolina	0.50	1.10	0.47	0.77	0.75
Virginia	0.66	0.51	0.68	0.74	0.69
Ohio	0.50	0.90	0.69	0.79	0.67
All other	0.68	0.68	0.67	0.68	0.68
Average	0.60	0.70	0.79	0.70	0.60

Table 9--Continued

Fresh-market tomatoes: U.S. harvested area, production, yield, and production value data, by selected States and total, 1990-94

State	1990	1991	1992	1993	1994
	<u>Value (1,000 dollars)</u>				
Value:					
Florida	414,528	570,801	821,805	607,464	428,455
California	273,258	235,000	343,728	266,288	248,942
New Jersey	16,733	12,480	21,420	18,896	28,863
Tennessee	20,640	17,766	15,120	19,008	24,219
Pennsylvania	12,159	7,534	15,065	13,223	14,440
Georgia	20,650	33,703	36,112	25,480	34,965
South Carolina	28,024	58,300	22,450	40,320	35,700
Virginia	43,206	33,149	40,672	34,170	47,583
Ohio	12,083	26,240	13,995	29,535	21,777
All other	83,766	83,790	66,583	72,003	81,413
Total	925,047	1,078,763	1,396,950	1,126,387	966,357
	<u>Yield (metric tons per hectare)</u>				
Average unit value:					
Florida	33.63	39.23	45.40	36.43	37.55
California	28.58	26.34	31.38	30.26	30.82
New Jersey	12.89	11.21	14.01	14.57	16.26
Tennessee	22.42	20.18	17.93	17.93	25.78
Pennsylvania	14.57	8.97	19.05	16.81	21.30
Georgia	28.02	34.19	40.93	31.38	41.47
South Carolina	37.56	35.32	31.38	40.35	33.63
Virginia	47.64	45.95	45.95	38.11	50.44
Ohio	20.76	22.42	16.81	30.82	23.54
All other	16.71	16.26	13.54	14.02	15.84
Average	28.15	28.92	33.17	29.55	30.91

Source: Compiled from official statistics of the National Agricultural Statistics Service, U.S. Department of Agriculture, *Vegetables* series, Washington, DC, Final Estimates 1987-92, (Jan. 1995), Statistical Bulletin No. 902, and 1994 Summary (Jan. 1995), VG 1-2(95).

Table 10

Processing tomatoes: U.S. harvested area, production, yield, and production value data, by selected States and total, 1990-94

State	1990	1991	1992	1993	1994
<u>Area (hectares)</u>					
Area harvested:					
California	125,453	126,262	97,125	110,884	125,857
Ohio	6,920	7,163	5,868	5,625	4,694
Indiana	3,076	3,561	2,671	2,873	2,914
Michigan	2,307	2,711	2,307	2,630	1,821
Pennsylvania	728	809	486	405	526
All other	5,059	3,553	2,392	2,011	1,805
Total	143,542	144,060	110,847	124,429	137,617
<u>Quantity (Thousand metric tons)</u>					
Production:					
California	8,442	8,975	7,196	8,121	9,751
Ohio	394	356	340	274	311
Indiana	175	197	148	134	187
Michigan	154	154	165	165	131
Pennsylvania	32	25	31	19	23
All other	197	156	82	66	69
Total	9,394	9,864	7,963	8,778	10,471
<u>Yield (metric tons per hectare)</u>					
Yield:					
California	67.30	71.08	74.09	73.24	77.47
Ohio	56.96	49.70	57.93	48.64	66.22
Indiana	56.94	55.42	55.55	46.49	64.11
Michigan	66.80	56.72	71.73	62.77	71.73
Pennsylvania	43.49	30.94	63.89	46.85	44.14
All other	38.87	44.02	34.37	33.01	38.18
Total	65.45	68.47	71.84	70.55	76.09

Table 10--Continued

Processing tomatoes: U.S. harvested area, production, yield, and production value data, by selected States and total, 1990-94

State	1990	1991	1992	1993	1994
	<u>Value (1,000 dollars)</u>				
Value:					
California	617,001	640,111	447,365	529,038	655,638
Ohio	33,283	31,275	25,965	20,843	24,740
Indiana	16,273	19,753	13,002	11,971	17,153
Michigan	12,824	13,222	12,586	12,649	10,627
Pennsylvania	3,307	2,570	2,750	1,609	2,066
All other	<u>19,679</u>	<u>15,183</u>	<u>7,745</u>	<u>5,783</u>	<u>6,404</u>
Average	702,367	722,114	509,413	581,893	716,628
	<u>Average unit value (dollars per metric ton)</u>				
Average unit value:					
California	73.08	71.32	62.17	65.15	67.24
Ohio	84.44	87.85	76.39	76.17	79.59
Indiana	92.92	100.09	87.63	89.61	91.82
Michigan	83.22	85.98	76.06	76.61	81.35
Pennsylvania	104.39	102.64	88.64	84.86	88.96
All other	<u>100.09</u>	<u>97.07</u>	<u>94.23</u>	<u>87.11</u>	<u>92.92</u>
Average	74.77	73.21	63.97	66.29	68.44

Source: Compiled from official statistics of the National Agricultural Statistics Service, U.S. Department of Agriculture, *Vegetables* series, Washington, DC, Final Estimates 1987-92, (Jan. 1995), Statistical Bulletin No. 902, and 1994 Summary (Jan. 1995), VG 1-2(95).

Table 11
 Fresh-market tomatoes: Florida harvested area and share of total, by production district, 1985/86 to 1993/94 seasons

Season	Date	Ft. Pierce/ Pompono		Southwest		Palmetto/ Ruskin		Total
		Acres	Percent	Acres	Percent	Acres	Percent	
1985/86 . .	11,602	25.5	8.9	12,614	27.7	17,249	37.9	45,530
1986/87 . .	11,113	21.8	8.9	15,362	30.2	19,918	39.1	50,908
1987/88 . .	8,135	15.1	9.3	18,402	34.1	21,384	39.6	53,939
1988/89 . .	8,015	13.9	8.8	20,111	34.9	24,472	42.4	57,663
1989/90 . .	5,742	11.6	10.0	19,675	39.9	18,950	38.4	49,306
1990/91 . .	5,580	12.2	11.3	19,724	43.3	15,150	33.2	45,597
1991/92 . .	5,048	10.9	11.7	20,419	44.1	15,366	33.2	46,255
1992/93 . .	5,690	12.8	13.0	20,376	45.8	12,612	28.4	44,477
1993/94 . .	5,030	11.1	13.0	21,093	46.7	13,191	29.2	45,189

Note.--Because of rounding, percentages may not add to 100.0 percent.

Source: Compiled from data reported in Florida Tomato Committee, Annual Report, 1990/91 and 1993/94.

Table 12

Fresh-market tomatoes: Sinaloa, Mexico, harvested area, 1985/86 to 1993/94

(Hectares)

<u>Season</u>	<u>Regular Staked</u>	<u>Regular Ground</u>	<u>Cherry</u>	<u>Roma</u>	<u>Total</u>
1985/86.....	12,786	1,638	851	1,501	16,776
1986/87.....	14,665	695	1,203	4,082	20,645
1987/88.....	13,219	3,023	1,676	4,339	22,257
1988/89.....	11,608	1,702	1,773	5,310	20,393
1989/90.....	12,137	2,595	1,010	5,469	21,211
1990/91.....	11,852	3,006	969	6,442	22,269
1991/92.....	10,837	2,588	1,036	7,363	21,824
1992/93.....	11,788	1,078	745	6,636	20,247
1993/94.....	10,398	1,157	779	5,229	17,563

Source: Compiled from data reported by Confederacion de Asociaciones Agricolas del Estado de Sinaloa.

Table 13

Estimated production costs for fresh-market tomatoes grown in the Dade County, FL, area, 1990/91 to 1993/94 seasons

(Dollars per hectare)				
Item	1990/91	1991/92	1992/93	1993/94
Preharvest costs:				
Operating costs:				
Seed	498.41	498.41	498.41	498.41
Fertilizer	838.92	838.92	682.01	617.76
Fumigant	489.27	517.07	878.46	934.06
Other pesticides	1,348.67	1,459.80	1,538.40	1,538.41
Surfactant	32.35	26.49	(1)	(1)
Labor	1,450.95	1,715.48	923.65	923.65
Machinery	757.08	583.09	450.13	473.95
Interest	384.57	462.70	406.14	370.53
Miscellaneous	<u>1,922.50</u>	<u>2,265.98</u>	<u>2,177.02</u>	<u>2,177.02</u>
Total operating costs	7,722.70	8,367.91	7,554.22	7,533.79
Fixed costs:				
Land rent	803.09	494.21	864.87	1,976.84
Machinery	327.07	310.51	291.31	272.06
Management	791.43	950.17	996.50	2,352.61
Overhead	(1)	(1)	<u>830.42</u>	<u>1,882.10</u>
Total fixed costs	<u>1,921.59</u>	<u>1,754.89</u>	<u>2,983.13</u>	<u>6,483.62</u>
Total preharvest costs	9,644.31	10,122.80	10,537.35	14,017.40
Harvest and marketing costs:				
Harvest and hauling	2,666.26	2,666.26	2,594.60	2,594.60
Packing	5,621.64	5,942.88	5,189.21	5,189.21
Containers	2,152.28	2,441.40	2,629.20	2,629.20
Selling	481.85	481.85	518.92	518.92
Organization fees	(1)	<u>160.62</u>	<u>172.97</u>	<u>172.97</u>
Total harvest and marketing costs	<u>10,922.04</u>	<u>11,693.01</u>	<u>11,104.90</u>	<u>11,104.90</u>
Total estimated production costs	20,566.35	21,815.81	21,642.25	25,122.30

¹ Not reported.

Note.--These costs are constructed based on input prices obtained from various industry sources and are believed to reflect typical costs of production for growers in a given production area, but do not necessarily reflect the actual industry average cost of production.

Note.--Because of rounding, figures may not add to the totals shown.

Source: Compiled from data prepared by Scott A. Smith and Timothy G. Taylor, *Production Cost for Selected Vegetables in Florida, 1992-1993*, Food and Resource Economics Department, Institute of Food and Agricultural Sciences, University of Florida, Gainesville, FL, EI 91-2 (June 1991), p. 23; circular 1064: 1992, p. 23; circular 1121: 1993, p. 23; and circular 1146: 1994, p. 22.

Table 14

Estimated production costs for spring-planted fresh-market tomatoes¹ grown in the Manatee/Ruskin, FL, area, 1990/91 to 1993/94 seasons

(Dollars per hectare)				
Item	1990/91	1991/92	1992/93	1993/94
Preharvest costs:				
Operating costs:				
Transplants	667.18	474.44	553.52	553.52
Fertilizer and lime	825.53	910.73	1,110.89	865.41
Fumigant	795.68	631.97	459.62	830.27
Other pesticides	1,568.42	1,796.60	1,633.54	2,140.28
Surfactant	(2)	400.51	447.36	(2)
Labor	2,084.36	1,971.18	998.18	998.18
Machinery	1,184.99	975.18	744.18	780.01
Interest	279.70	514.60	415.41	360.67
Miscellaneous	<u>1,266.41</u>	<u>1,969.75</u>	<u>1,969.75</u>	<u>1,986.06</u>
Total operating costs	8,672.27	9,644.93	8,332.41	8,514.37
Fixed costs:				
Land rent	506.57	506.57	506.57	988.42
Machinery	741.39	717.30	666.44	635.41
Management	928.18	1,411.93	1,363.50	2,844.39
Overhead	(2)	(2)	909.00	1,955.51
Total fixed costs	<u>2,176.13</u>	<u>2,635.79</u>	<u>3,445.51</u>	<u>6,423.73</u>
Total preharvest costs	10,848.41	12,280.72	11,777.91	14,938.10
Harvest and marketing costs:				
Harvest and hauling	1,957.07	2,011.43	2,378.39	2,378.39
Packing	4,349.05	5,028.59	5,714.30	5,714.30
Containers	1,821.16	2,038.62	2,316.61	2,316.61
Selling	407.72	407.72	463.32	463.32
Organization fees	(2)	135.91	154.44	154.44
Total harvest and marketing costs	<u>8,535.01</u>	<u>9,622.27</u>	<u>11,027.06</u>	<u>11,027.06</u>
Total estimated production costs	19,383.41	21,902.50	22,804.97	25,965.16

¹ Costs are for spring-planted tomatoes.

² Not reported.

Note.--These costs are constructed based on input prices obtained from various industry sources and are believed to reflect typical costs of production for growers in a given production area, but do not necessarily reflect the actual industry average cost of production.

Note.--Because of rounding, figures may not add to the totals shown.

Source: Compiled from *Production Cost for Selected Vegetables in Florida, 1992-1993*, Scott A. Smith and Timothy G. Taylor, Food and Resource Economics Department, Institute of Food and Agricultural Sciences, University of Florida, Gainesville, Florida, EI 91-2: June 1991; p. 24; circular 1064: 1992, p. 24; circular 1121: 1993, p. 24; and circular 1146: 1994, p. 23.

Table 15
 Estimated production costs for fresh-market tomatoes grown in the southwest Florida area, 1990/91 to 1993/94 seasons

(Dollars per hectare)				
Item	1990/91	1991/92	1992/93	1993/94
Preharvest costs:				
Operating costs:				
Transplants	815.45	815.45	951.35	951.35
Fertilizer and lime	717.84	660.51	692.14	640.00
Fumigant	469.50	459.62	696.84	785.79
Other pesticides	1,272.66	1,144.69	1,312.60	1,338.94
Labor	1,305.33	1,799.22	603.33	603.33
Machinery	1,286.55	1,099.22	781.05	829.90
Interest	415.16	577.39	481.83	397.52
Miscellaneous	<u>3,805.32</u>	<u>3,887.28</u>	<u>3,542.57</u>	<u>3,542.57</u>
Total operating costs	10,087.81	10,443.40	9,061.69	9,089.44
Fixed costs:				
Land rent	815.45	822.86	926.64	1,111.97
Machinery	495.94	472.69	451.41	430.01
Management	(1)	(1)	1,194.95	2,046.77
Overhead	<u>1,232.68</u>	<u>1,494.84</u>	<u>1,493.68</u>	<u>2,558.47</u>
Total fixed costs	<u>2,554.07</u>	<u>2,790.38</u>	<u>4,066.68</u>	<u>6,147.23</u>
Total preharvest costs	12,631.88	13,233.76	13,128.37	15,236.67
Harvest and marketing costs:				
Harvest and hauling	3,217.31	3,217.31	2,663.79	2,663.79
Packing	6,400.02	6,400.02	6,400.02	6,400.02
Containers	2,317.84	2,594.60	2,594.60	2,594.60
Selling	518.92	518.92	518.92	518.92
Assessments	<u>(1)</u>	<u>172.97</u>	<u>172.97</u>	<u>172.97</u>
Total harvest and marketing costs	<u>12,454.09</u>	<u>12,903.82</u>	<u>12,350.31</u>	<u>12,350.31</u>
Total estimated production costs	25,085.97	26,137.58	25,478.68	27,586.98

¹ Not reported.

Note.--These costs are constructed based on input prices obtained from various industry sources and are believed to reflect typical costs of production for growers in a given production area, but do not necessarily reflect the actual industry average cost of production.

Note.--Because of rounding, figures may not add to the totals shown.

Source: Compiled from *Production Cost for Selected Vegetables in Florida, 1992-1993*, Scott A. Smith and Timothy G. Taylor, Food and Resource Economics Department, Institute of Food and Agricultural Sciences, University of Florida, Gainesville, Florida, EI 91-2: June 1991, p. 27; circular 1064: 1992, p. 27; circular 1121, 1993, p. 27; and circular 1146: 1994, p. 27.

Table 16

Estimated production costs for export quality fresh-market tomatoes grown in the Sinaloa, Mexico area, 1990/91 to 1993/94 seasons

Item	1990/91	1991/92	1992/93	1993/94
	<i>(Pesos per hectare)</i>			
Field preparation	550	628	858	787
Planting/transplanting	1,277	1,404	1,182	1,500
Fertilization	1,411	1,639	2,211	2,430
Weed control	311	517	709	983
Pest control	2,004	2,218	2,905	3,110
Cultivation	1,260	1,346	1,685	1,876
Irrigation	249	475	892	400
Cultivation	2,839	2,124	2,026	2,380
Harvesting	1,219	1,582	1,977	2,260
Miscellaneous	1,641	3,850	3,364	2,622
Capital costs	1,899	1,998	2,300	2,244
Total production costs	14,660	17,782	20,109	20,592
	<i>(U.S. dollars per hectare)</i>			
Field preparation	186.73	204.62	275.57	253.39
Planting/transplanting	433.56	457.18	379.28	482.95
Fertilization	478.71	533.73	709.70	782.38
Weed control	105.59	168.25	227.64	316.49
Pest control	680.38	722.24	932.32	1,001.32
Cultivation	427.79	438.29	540.77	604.01
Irrigation	84.54	154.67	286.37	128.79
Cultivation	963.88	691.79	650.29	766.28
Harvesting	413.87	515.14	634.75	727.65
Miscellaneous	557.14	1,253.66	1,079.48	844.20
Capital costs	644.73	650.60	738.27	722.50
Total production costs	4,976.92	5,790.17	6,454.43	6,629.96

Note.--These costs are constructed based on input prices obtained from various industry sources and are believed to reflect estimated costs of production for growers in a given production area, but do not necessarily represent the actual industry average cost of production.

Note.--Because of rounding, figures may not add to the totals shown.

Source: CAADES as reported by the U.S. Department of Agriculture, "Tomatoes and Products, Annual Report," U.S. Embassy, Mexico City, Mexico, AGR Numbers MX1236, MX2253, MX3132, and MX4085. Annual production costs converted to U.S. dollars using exchange rates quoted as of Dec. 31 of each year, as reported by the International Monetary Fund (IMF) *International Financial Statistics*.

SHIPMENTS AND ARRIVALS

Table 17
 Fresh-market tomatoes: Weekly quantities available at major shipping points, by sources, Jan. 1-Dec. 31, 1994.

Week ending	(1,000 pounds)														
	U.S. product Piggyback						U.S. total						Import		Grand total
	Florida		Calif-ornia		Other		Total		Other		Total		Mexico		
Jan. 1	40	0	0	0	0	0	22,970	0	0	23,010	17,040	280	17,320	40,330	
8	200	40	0	0	0	0	34,160	0	0	34,400	21,610	650	22,260	56,660	
15	160	0	0	0	0	0	31,990	0	0	32,150	27,620	550	28,170	60,320	
22	440	0	0	0	0	0	34,930	0	0	35,370	26,440	350	26,790	62,160	
29	280	0	0	0	0	0	36,970	1,980 ¹	0	39,230	30,530	600	31,130	70,360	
Feb. 5	280	0	0	0	0	0	33,020	0	0	33,060	33,440	640	34,080	70,140	
12	520	0	0	0	0	0	38,630	0	0	41,270	40,040	310	40,350	81,620	
19	520	0	0	0	0	0	34,450	880 ¹	0	35,850	43,830	140	43,970	79,820	
26	320	0	0	0	0	0	25,810	1,280 ¹	0	27,410	39,780	340	40,120	67,530	
Mar. 5	240	0	0	0	0	0	28,610	0	0	28,850	42,510	410	42,920	71,770	
12	680	0	0	0	0	0	32,780	2,120 ¹	0	35,580	51,180	190	51,370	86,950	
19	400	0	0	0	0	0	29,470	1,560 ¹	0	31,430	44,530	180	44,710	76,140	
26	720	0	0	0	0	0	28,540	760 ¹	0	30,020	43,110	190	43,300	73,320	
Apr. 2	960	0	0	0	0	0	34,040	0	0	35,000	36,630	230	36,860	71,860	
9	1,880	0	0	0	0	0	45,580	0	0	47,460	28,440	190	28,630	76,090	
16	440	0	0	0	0	0	51,610	0	0	52,050	25,650	260	25,910	77,960	
23	1,760	0	0	0	0	0	54,810	0	0	56,570	19,860	390	20,250	76,820	
30	800	0	0	0	0	0	47,800	0	0	48,600	25,370	440	25,810	74,410	
May 7	1,880	0	0	0	0	0	55,890	0	0	57,770	11,960	310	12,270	70,040	
14	1,480	0	0	0	0	20	64,900	1,240	0	66,380	12,370	350	12,720	79,100	
21	1,240	0	0	0	0	500	59,810	6,990	0	68,540	10,030	570	10,600	79,140	
28	760	0	0	0	0	670	36,480	8,480	0	45,390	8,260	430	8,690	55,080	
June 4	120	0	0	0	0	690	36,320	11,520	0	48,650	9,100	710	9,810	58,460	
11	520	640	0	0	0	10,830	34,760	21,380	0	68,130	10,260	800	11,060	79,190	
18	1,320	240	0	0	0	21,770	31,160	33,020	0	87,510	6,910	460	7,370	94,880	
25	320	520	0	0	0	25,870	21,270	35,260	70 ²	83,310	6,410	660	7,070	90,380	
July 2	480	1,080	120	0	0	17,110	11,240	42,000	70 ²	72,100	4,770	260	5,030	77,130	
9	40	1,440	0	0	0	10,520	1,350	37,950	0	51,370	3,370	250	3,620	54,990	
16	80	1,720	0	0	0	25,690	160	49,460	200 ²	77,310	4,380	230	4,610	81,920	
23	0	2,120	0	0	0	20,910	0	53,500	200 ²	76,730	4,970	410	5,380	82,110	
30	0	1,440	80	0	0	11,910	0	47,450	0	60,880	5,190	10	5,200	66,080	
Aug. 6	0	1,760	40	0	0	7,070	0	39,350	0	48,220	6,680	20	6,700	54,920	
13	0	1,840	40	0	0	45,500	0	42,150	0	47,380	10,720	0	10,720	58,100	
20	0	1,560	0	0	0	3,420	0	41,850	3,420	46,830	12,230	320	12,550	59,380	
27	0	2,040	40	0	0	3,690	0	44,190	3,690	49,960	4,940	100	5,040	55,000	

See footnotes at end of table.

Table 17--Continued
 Fresh-market tomatoes: Weekly quantities available at major shipping points, by sources, Jan. 1-Dec. 31, 1994.

Week ending	(1,000 pounds)															
	U.S. product Piggyback						Truck			Other		U.S. total		Import		Grand total
	Florida	Calif-ornia	Other	Total	Florida	Calif-ornia	Other	Total	Total	Mexico	Other	Total	Total	Total		
Sept. 3	40	960	80	1,080	0	36,140	4,580	40,720	0	41,800	4,520	80	4,600	46,400		
10	0	1,280	0	1,280	0	40,040	8,420	48,460	0	49,740	4,210	4,130	4,340	54,080		
17	0	800	0	800	0	45,070	9,960	55,030	0	55,830	3,880	0	3,880	59,710		
24	0	1,200	0	1,200	600	52,100	14,170	66,870	0	68,070	3,660	0	3,660	71,730		
Oct. 1	0	1,640	40	1,680	3,210	40,840	9,350	53,400	0	55,080	4,180	0	4,180	59,260		
8	120	1,120	0	1,240	7,070	41,390	2,990	51,450	0	52,690	8,120	0	8,120	60,810		
15	40	840	0	880	10,580	48,020	0	58,600	0	59,480	3,060	10	3,070	62,550		
20	80	520	0	600	17,540	43,920	0	61,460	0	62,060	6,870	0	6,870	68,930		
29	120	1,080	0	1,200	21,090	38,380	0	59,470	0	60,670	1,960	0	1,960	62,630		
Nov. 5	440	840	0	1,280	23,440	32,840	0	56,280	0	57,560	4,860	0	4,860	62,420		
12	120	1,040	0	1,160	24,100	24,230	0	48,330	0	49,490	4,940	0	4,940	54,430		
19	120	760	0	880	30,020	10,440	0	40,460	0	41,340	6,580	10	6,590	47,930		
26	720	80	0	800	26,270	3,260	100	29,630	0	30,430	4,990	0	4,990	35,420		
Dec. 3	400	280	0	680	30,580	2,840	30	33,450	0	34,130	4,880	10	4,890	39,020		
10	600	1,160	0	1,760	35,780	2,290	0	38,070	0	39,830	6,690	20	6,710	46,540		
17	680	1,200	0	1,880	38,230	1,540	0	39,770	0	41,650	16,770	0	16,770	58,420		
24	240	800	0	1,040	23,280	420	0	23,700	0	24,740	16,980	0	16,980	41,720		
31	200	360	0	560	19,570	0	0	19,570	0	20,130	21,550	0	21,550	41,680		

¹ Shipped by boat from Puerto Rico.

² Shipped by rail.

Note.--Data for domestic shipments are obtained by the U.S. Department of Agriculture from various sources, including Federal marketing order administrative committees, Federal-State inspection service, shippers, and transportation agencies. Mexico data are border crossings secured from records of the Animal and Plant Health Inspection Service of the U.S. Department of Agriculture.

Source: Compiled from data of the Agricultural Marketing Services, U.S. Department of Agriculture.

Table 18
 Fresh-market tomatoes: Weekly quantities available at major shipping points, by sources, Jan. 7-June 3, 1995
 (1,000 pounds)

Week ending	U.S. product										U.S. total	Import Mexico	Other	Total	Grand total
	Piggyback			Truck				U.S.							
	Florida	Calif-ornia	Other	Total	Florida	Calif-ornia	Other	Total	Florida	Calif-ornia					
Jan. 7	120	0	0	120	22,920	0	0	22,920	23,040	26,060	0	26,060	49,100		
14	200	40	0	240	21,400	0	0	21,400	21,640	35,310	0	35,310	56,950		
21	400	0	0	400	19,470	0	0	19,470	19,870	44,250	20	44,270	64,140		
28	200	0	0	200	16,420	0	0	16,420	16,700 ¹	36,750	0	36,750	53,450		
Feb. 4	0	0	0	0	18,030	0	0	18,030	18,030	49,030	10	49,040	67,070		
11	160	0	0	160	19,500	0	0	19,500	20,700 ²	70,390	10	70,400	91,100		
18	440	0	0	440	19,690	0	0	19,690	21,770 ³	63,320	10	63,330	85,100		
25	320	0	0	320	21,840	0	0	21,840	22,160	45,890	120	46,010	68,170		
Mar. 4	240	0	0	240	17,830	0	0	17,830	18,390 ⁴	50,110	0	50,110	68,500		
11	600	0	0	600	16,170	0	0	16,170	16,770	37,660	20	37,680	54,450		
18	280	0	0	280	18,810	0	0	18,810	19,210 ⁵	47,990	0	47,990	67,200		
25	160	0	0	160	14,040	0	0	14,040	14,320 ⁵	78,550	20	78,570	92,890		
Apr. 1	120	0	0	120	15,310	0	0	15,310	15,430	53,970	0	53,970	69,400		
8	280	0	0	280	15,130	0	0	15,130	15,410	44,520	10	44,530	59,940		
15	400	0	0	400	21,700	0	0	21,700	22,100	56,590	30	56,620	78,720		
22	1,200	0	0	1,200	28,530	0	0	28,530	29,730	37,360	0	37,360	67,090		
29	1,560	0	0	1,560	48,800	0	0	48,800	50,360	22,690	10	22,700	73,060		
May 6	1,880	0	0	1,880	55,890	0	0	55,890	57,770	11,960	310	12,270	70,040		
13	1,440	0	0	1,440	46,960	1,380	240	48,580	50,020	16,630	10	16,640	66,660		
20	1,120	480	0	1,600	45,050	3,490	420	48,960	50,560	15,530	0	15,530	66,090		
27	520	720	0	1,240	40,860	5,590	640	47,090	48,330	16,580	0	16,580	64,910		
June 3	120	920	0	1,040	23,650	8,280	600	32,530	33,570	17,690	0	17,690	51,260		

¹ Includes 80,000 pounds shipped by boat from Puerto Rico.

² Includes 1,040,000 pounds shipped by boat from Puerto Rico.

³ Includes 1,640,000 pounds shipped by boat from Puerto Rico.

⁴ Includes 320,000 pounds shipped by boat from Puerto Rico.

⁵ Includes 120,000 pounds shipped by boat from Puerto Rico.

Note.--Data for domestic shipments are obtained by the U.S. Department of Agriculture from various sources, including Federal marketing order administrative committees, Federal-State inspection service, shippers, and transportation agencies. Mexico data are border crossings secured from records of the Animal and Plant Health Inspection Service of the U.S. Department of Agriculture.

Source: Compiled from data of the Agricultural Marketing Services, U.S. Department of Agriculture.

Table 19

Fresh-market tomatoes: Weekly shipments from all sources, by weeks, Dec. 3-June 3, 1989/90 to 1994/95

(1,000 pounds)

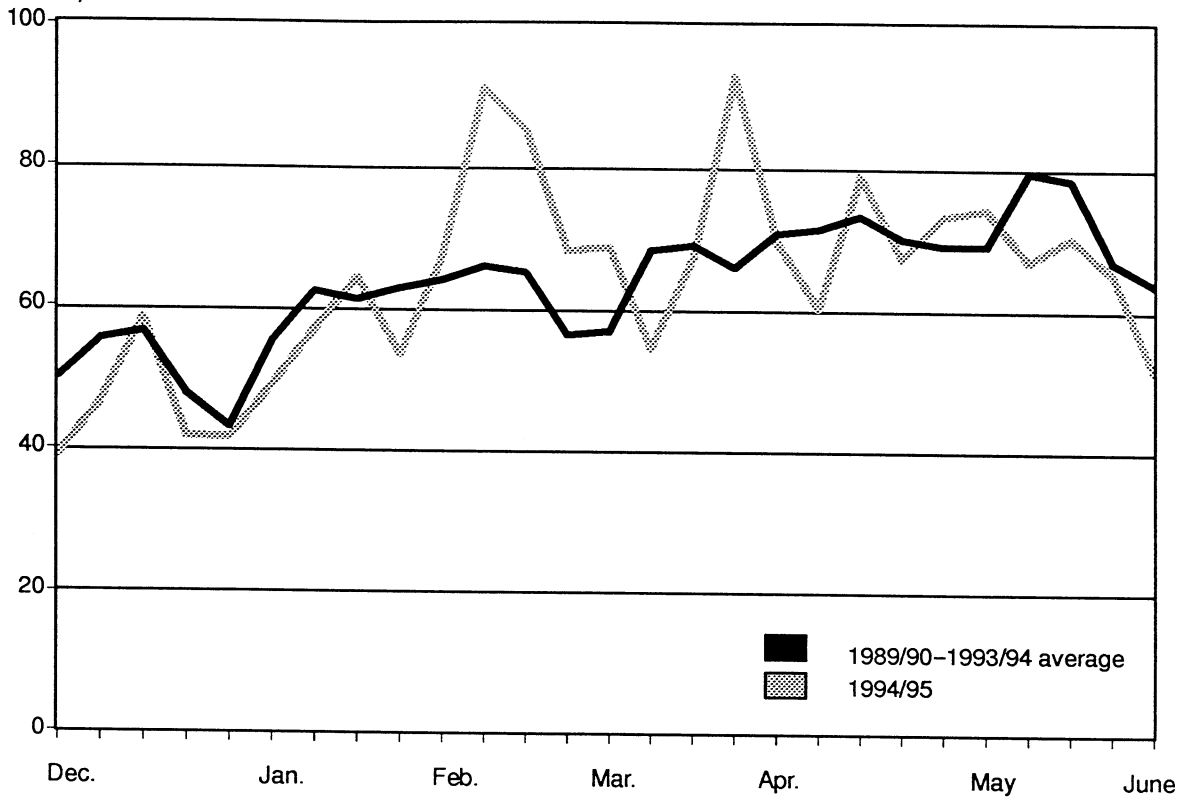
Week ending	1989/90	1990/91	1991/92	1992/93	1993/94	1989/90- 1993/94 average	1994/95
Dec. 3.....	51,150	55,050	55,325	40,320	48,460	50,061	39,020
10.....	63,775	53,325	60,250	57,120	42,570	55,408	46,540
17.....	77,525	49,425	61,575	51,900	42,140	56,513	58,420
24.....	56,150	55,825	50,175	40,520	36,640	47,862	41,720
31.....	43,450	50,750	40,550	40,830	40,330	43,182	41,680
Jan. 7.....	31,700	71,300	42,675	73,700	56,660	55,207	49,100
14.....	35,725	80,875	67,925	67,200	58,830	62,111	56,950
21.....	47,550	62,750	59,850	73,300	61,600	61,010	64,140
28.....	50,800	67,875	52,300	72,240	69,960	62,635	53,450
Feb. 4.....	51,725	75,525	51,100	74,470	66,550	63,874	67,070
11.....	49,000	67,225	43,500	86,530	82,580	65,767	91,100
18.....	42,050	79,700	52,225	71,170	79,820	64,993	85,100
25.....	40,125	61,800	49,925	61,910	67,530	56,258	68,020
Mar. 4.....	48,725	57,350	44,425	62,300	71,770	56,914	68,500
11.....	59,925	66,975	56,975	73,440	83,490	68,161	54,450
18.....	64,050	73,100	40,650	90,900	75,770	68,894	66,950
25.....	65,700	73,025	46,650	70,770	71,970	65,623	92,750
Apr. 1.....	91,850	64,875	49,175	77,630	69,190	70,544	69,410
8.....	85,675	67,550	59,000	73,950	69,550	71,145	59,940
15.....	73,350	78,775	62,875	72,360	77,960	73,064	78,720
22.....	63,575	55,525	91,050	62,510	76,820	69,896	67,090
29.....	67,225	59,050	72,675	67,670	74,410	68,206	73,060
May 6.....	91,325	52,300	72,375	58,230	70,040	68,854	74,070
13.....	90,375	69,175	84,450	73,530	79,100	79,326	66,660
20.....	78,975	80,325	82,875	70,070	79,140	78,277	70,010
27.....	69,300	70,650	75,825	62,590	55,080	66,689	64,910
June 3.....	63,000	58,825	66,275	70,670	58,460	63,446	51,260

Note.--The week ending date is for the current 1994/95 year. The data for the 1989/90 through 1993/94 seasons represent the closest corresponding weeks to that date.

Source: Compiled from data of the Agricultural Marketing Service, U.S. Department of Agriculture.

Figure 2
Fresh-market tomatoes: Weekly shipments from all sources, by weeks, Dec. 3-June 3,
1989/90-1993/94 5-year average and 1994/95

Million pounds



Source: Compiled from data of the Agriculture Marketing Service, U.S. Department of Agriculture.

Table 20

Fresh-market tomatoes: Percent of 1989/90-1993/94 5-year average total reported U.S. weekly shipments from all sources, by weeks, Dec. 3-June 3, 1989/90 to 1994/95

(Percent)						
Week ending	1989/90	1990/91	1991/92	1992/93	1993/94	1994/95
Dec. 3.....	102.2	110.0	110.5	80.5	96.8	77.9
10.....	115.1	96.2	108.7	103.1	76.8	84.0
17.....	137.2	87.5	109.0	91.8	74.6	103.4
24.....	117.3	116.6	104.8	84.7	76.6	87.2
31.....	100.6	117.5	93.9	94.6	93.4	96.5
Jan. 7.....	57.4	129.2	77.3	133.5	102.6	88.9
14.....	57.5	130.2	109.4	108.2	94.7	91.7
21.....	77.9	102.9	98.1	120.1	101.0	105.1
28.....	81.1	108.4	83.5	115.3	111.7	85.3
Feb. 4.....	81.0	118.2	80.0	116.6	104.2	105.0
11.....	74.5	102.2	66.1	131.6	125.6	138.5
18.....	64.7	122.6	80.4	109.5	122.8	130.9
25.....	71.3	109.9	88.7	110.0	120.0	120.9
Mar. 4.....	85.6	100.8	78.1	109.5	126.1	120.4
11.....	87.9	98.3	83.6	107.7	122.5	79.9
18.....	93.0	106.1	59.0	131.9	110.0	97.2
25.....	100.1	111.3	71.1	107.8	109.7	141.3
Apr. 1.....	130.2	92.0	69.7	110.0	98.1	98.4
8.....	120.4	94.9	82.9	103.9	97.8	84.3
15.....	100.4	107.8	86.1	99.0	106.7	107.7
22.....	91.0	79.4	130.3	89.4	109.9	96.0
29.....	98.6	86.6	106.6	99.2	109.1	107.1
May 6.....	132.6	76.0	105.1	84.6	101.7	107.6
13.....	113.9	87.2	106.5	92.7	99.7	84.0
20.....	100.9	102.6	105.9	89.5	101.1	89.4
27.....	103.9	105.9	113.7	93.9	82.6	97.3
June 3.....	99.3	92.7	104.5	111.4	92.1	80.8

Note.--The week ending date is for the current 1994/95 year. The data for the 1989/90 through 1993/94 seasons represent the closest corresponding weeks to that date.

Source: Compiled from data of the Agricultural Marketing Service, U.S. Department of Agriculture.

Table 21

Fresh-market tomatoes: Weekly shipments from Florida, by weeks, Dec. 3-June 3, 1989/90 to 1994/95

(1,000 pounds)

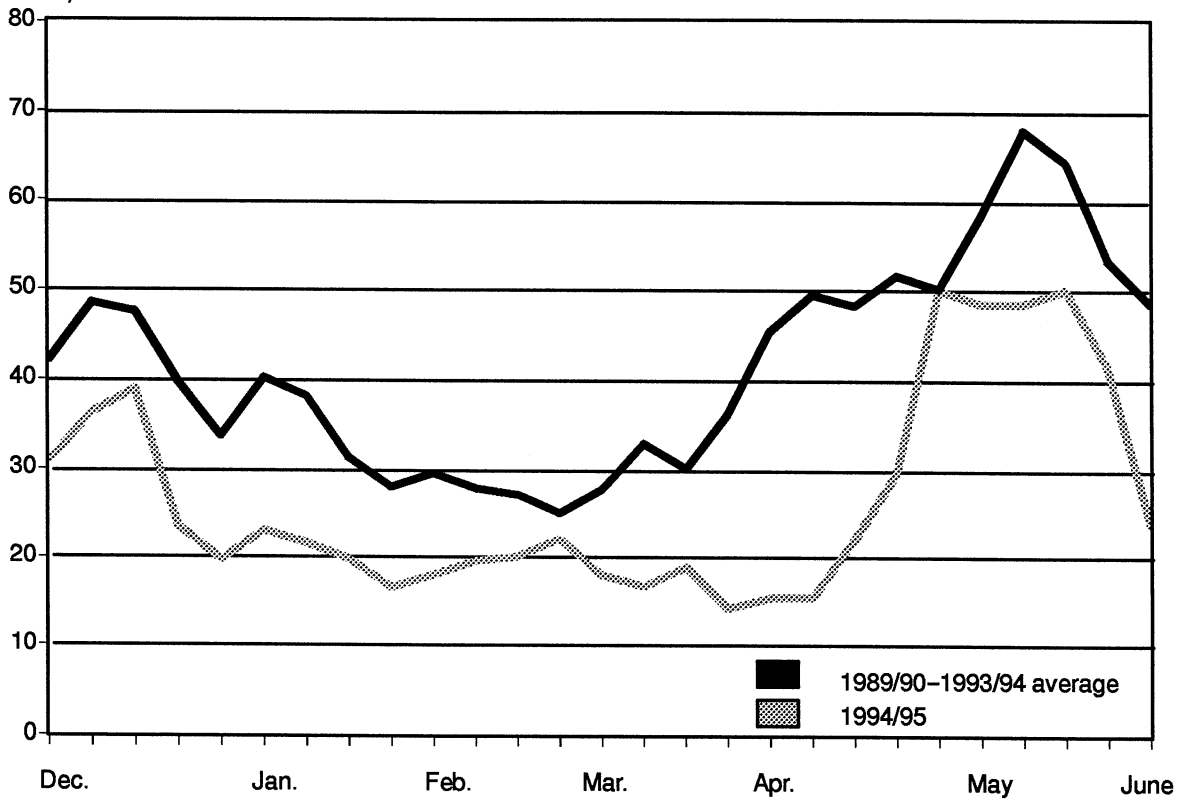
Week ending	1989/90	1990/91	1991/92	1992/93	1993/94	1989/90- 1993/94 average	1994/95
Dec. 3.....	36,350	47,550	46,375	36,970	43,590	42,167	30,980
10.....	55,575	45,950	54,150	53,730	33,530	48,587	36,380
17.....	66,025	39,575	55,650	46,680	30,060	47,598	38,910
24.....	46,575	45,500	45,200	35,360	25,920	39,711	23,520
31.....	31,600	41,200	35,875	37,210	23,010	33,779	19,770
Jan. 7.....	13,050	62,150	31,875	59,840	34,360	40,255	23,040
14.....	10,900	58,475	49,275	41,420	31,210	38,256	21,600
21.....	6,350	40,800	44,925	29,400	35,160	31,327	19,870
28.....	3,700	38,600	37,775	22,040	37,480	27,919	16,620
Feb. 4.....	2,825	44,325	39,350	28,090	33,190	29,556	18,030
11.....	1,800	30,775	34,600	31,870	40,430	27,895	19,660
18.....	925	29,975	38,000	31,920	34,970	27,158	20,130
25.....	1,925	24,775	38,225	34,200	26,130	25,051	22,130
Mar. 4.....	7,275	31,000	36,775	35,300	28,850	27,840	18,070
11.....	10,700	38,050	47,950	35,800	32,290	32,958	16,770
18.....	19,725	34,250	34,800	32,100	29,680	30,111	18,970
25.....	42,400	28,600	41,250	41,600	28,080	36,386	14,200
Apr. 1.....	68,000	37,800	39,525	49,160	32,520	45,401	15,450
8.....	72,275	38,350	52,000	43,740	41,080	49,489	15,410
15.....	66,300	35,950	54,775	32,190	52,050	48,253	22,100
22.....	58,850	28,850	79,900	34,000	56,570	51,634	29,730
29.....	61,725	40,050	66,275	34,190	48,600	50,168	50,360
May 6.....	85,050	40,875	64,575	43,630	57,770	58,380	48,450
13.....	84,550	59,575	76,650	54,190	64,940	67,981	48,400
20.....	70,650	64,650	74,925	50,540	61,050	64,363	50,080
27.....	58,600	54,150	71,375	45,390	37,240	53,351	41,380
June 3.....	47,125	40,300	60,000	58,650	36,440	48,503	23,770

Note.--The week ending date is for the current 1994/95 year. The data for the 1989/90 through 1993/94 seasons represent the closest corresponding weeks to that date.

Source: Compiled from data of the Agricultural Marketing Service, U.S. Department of Agriculture.

Figure 3
Fresh-market tomatoes: Weekly shipments from Florida, by weeks, Dec. 3-June 3,
1989/90-1993/94 5-year average and 1994/95

Million pounds



Source: Compiled from data of the Agriculture Marketing Service, U.S. Department of Agriculture.

Table 22
 Fresh-market tomatoes: Percent of total reported U.S. weekly shipments from
 Florida, by weeks, Dec. 3-June 3, 1989/90 to 1994/95

(Percent)

Week ending	1989/90	1990/91	1991/92	1992/93	1993/94	1989/90- 1993/94 average	1994/95
Dec. 3.....	71.1	86.4	83.8	91.7	90.0	84.2	79.4
10.....	87.1	86.2	89.9	94.1	78.8	87.7	78.2
17.....	85.2	80.1	90.4	89.9	71.3	84.2	66.6
24.....	82.9	81.5	90.1	87.3	70.7	83.0	56.4
31.....	72.7	81.2	88.5	91.1	57.1	78.2	47.4
Jan. 7.....	41.2	87.2	74.7	81.2	60.6	72.9	46.9
14.....	30.5	72.3	72.5	61.6	53.1	61.6	37.9
21.....	13.4	65.0	75.1	40.1	57.1	51.3	31.0
28.....	7.3	56.9	72.2	30.5	53.6	44.6	31.1
Feb. 4.....	5.5	58.7	77.0	37.7	49.9	46.3	26.9
11.....	3.7	45.8	79.5	36.8	49.0	42.4	21.6
18.....	2.2	37.6	72.8	44.9	43.8	41.8	23.7
25.....	4.8	40.1	76.6	55.2	38.7	44.5	32.5
Mar. 4.....	14.9	54.1	82.8	56.7	40.2	48.9	26.4
11.....	17.9	56.8	84.2	48.7	38.7	48.4	30.8
18.....	30.8	46.9	85.6	35.3	39.2	43.7	28.3
25.....	64.5	39.2	88.4	58.8	39.0	55.4	15.3
Apr. 1.....	74.0	58.3	80.4	63.3	47.0	64.4	22.3
8.....	84.4	56.8	88.1	59.1	59.1	69.6	25.7
15.....	90.4	45.6	87.1	44.5	66.8	66.0	28.1
22.....	92.6	52.0	87.8	54.4	73.6	73.9	44.3
29.....	91.8	67.8	91.2	50.5	65.3	73.6	68.9
May 6.....	93.1	78.2	89.2	74.9	82.5	84.8	65.4
13.....	93.6	86.1	90.8	73.7	82.1	85.7	72.6
20.....	89.5	80.5	90.4	72.1	77.1	82.2	71.5
27.....	84.6	76.6	94.1	72.5	67.6	80.0	63.7
June 3.....	74.8	68.5	90.5	83.0	62.3	76.4	46.4

Note.--The week ending date is for the current 1994/95 year. The data for the 1989/90 through 1993/94 seasons represent the closest corresponding weeks to that date.

Source: Compiled from data of the Agricultural Marketing Service, U.S. Department of Agriculture.

Table 23

Fresh-market tomatoes: Weekly shipments from Mexico, by weeks, Dec. 3-June 3, 1989/90 to 1994/95

(1,000 pounds)

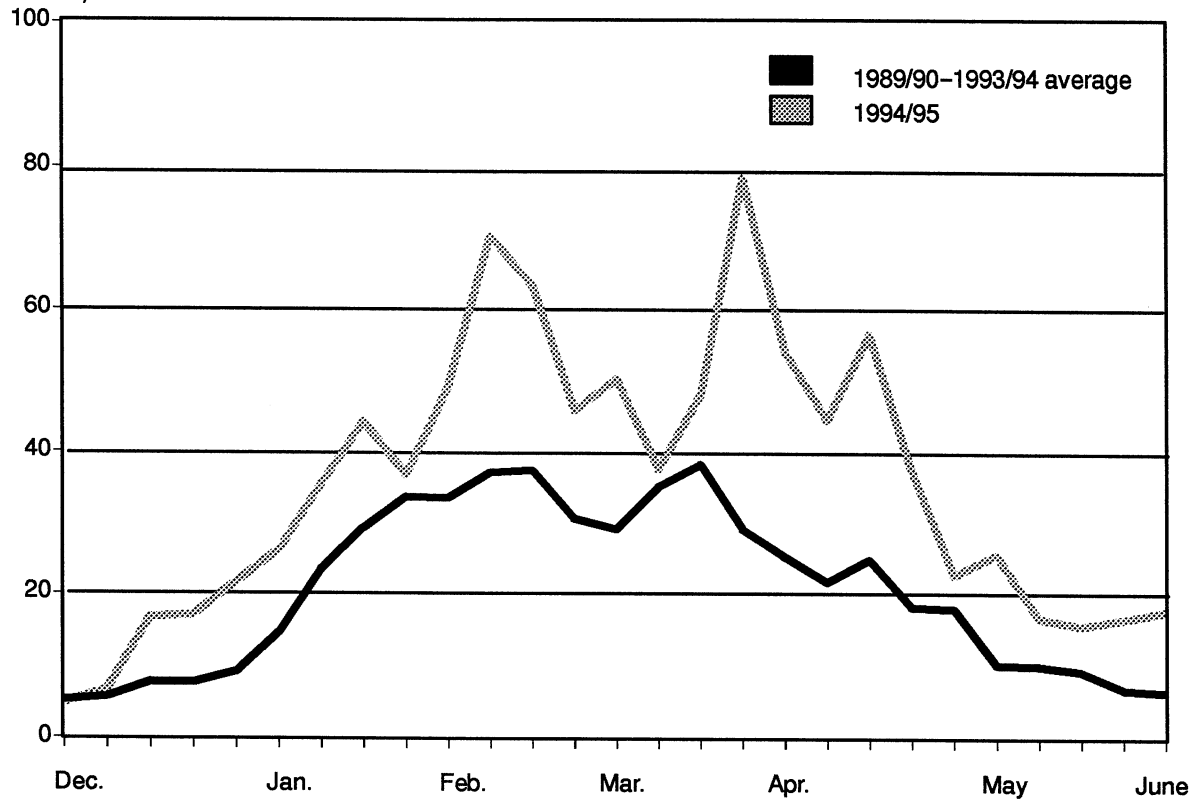
Week ending	1989/90	1990/91	1991/92	1992/93	1993/94	1989/90- 1993/94 average	1994/95
Dec. 3.....	9,525	4,450	6,950	1,980	3,510	5,283	4,880
10.....	6,800	6,750	5,000	2,750	6,770	5,614	6,690
17.....	9,975	8,725	5,150	4,650	10,490	7,798	16,770
24.....	8,975	9,700	4,425	4,920	10,140	7,632	16,980
31.....	11,500	9,325	4,150	3,510	17,040	9,105	21,550
Jan. 7.....	18,400	9,150	10,550	13,410	21,610	14,624	26,060
14.....	24,675	22,400	18,600	24,020	27,620	23,463	35,310
21.....	41,200	21,950	14,925	41,000	26,440	29,103	44,250
28.....	47,100	29,275	14,525	46,470	30,500	33,574	36,750
Feb. 4.....	48,900	31,200	11,750	41,750	33,360	33,392	49,030
11.....	47,200	36,450	8,900	52,430	40,030	37,002	70,390
18.....	41,125	49,725	14,225	37,790	43,830	37,339	63,320
25.....	38,200	37,025	11,700	25,310	39,780	30,403	45,890
Mar. 4.....	41,450	26,350	7,650	26,600	42,510	28,912	50,110
11.....	49,225	28,925	9,025	36,980	51,180	35,067	37,660
18.....	44,325	38,850	5,850	57,900	44,530	38,291	47,980
25.....	23,300	44,425	5,400	28,580	43,110	28,963	78,550
Apr. 1.....	23,850	27,075	9,650	28,470	36,520	25,113	53,960
8.....	13,400	29,200	7,000	30,210	28,440	21,650	44,520
15.....	7,050	42,825	8,100	40,140	25,650	24,753	56,590
22.....	4,725	26,675	11,150	28,490	19,860	18,180	37,360
29.....	5,400	19,000	6,400	33,190	25,370	17,872	22,690
May 6.....	6,050	11,375	7,800	13,480	11,960	10,133	25,400
13.....	5,675	9,325	7,800	14,750	12,370	9,984	16,630
20.....	5,650	12,350	7,950	10,510	10,030	9,298	15,530
27.....	3,950	8,800	4,050	8,570	8,260	6,726	16,580
June 3.....	5,450	7,075	5,000	5,160	9,100	6,357	17,690

Note.--The week ending date is for the current 1994/95 year. The data for the 1989/90 through 1993/94 seasons represent the closest corresponding weeks to that date.

Source: Compiled from data of the Agricultural Marketing Service, U.S. Department of Agriculture.

Figure 4
Fresh-market tomatoes: Weekly shipments from Mexico, by weeks, Dec. 3-June 3,
1989/90-1993/94 5-year average and 1994/95

Million pounds



Source: Compiled from data of the Agriculture Marketing Service, U.S. Department of Agriculture.

Table 24

Fresh-market tomatoes: Percent of total reported U.S. weekly shipments from Mexico, by weeks, Dec. 3-June 3, 1989/90 to 1994/95

(Percent)							
Week ending	1989/90	1990/91	1991/92	1992/93	1993/94	1989/90- 1993/94 average	1994/95
Dec. 3.....	18.6	8.1	12.6	4.9	7.2	10.6	12.5
10.....	10.7	12.7	8.3	4.8	15.9	10.1	14.4
17.....	12.9	17.7	8.4	9.0	24.9	13.8	28.7
24.....	16.0	17.4	8.8	12.1	27.7	15.9	40.7
31.....	26.5	18.4	10.2	8.6	42.3	21.1	51.7
Jan. 7.....	58.0	12.8	24.7	18.2	38.1	26.5	53.1
14.....	69.1	27.7	27.4	35.7	46.9	37.8	62.0
21.....	86.6	35.0	24.9	55.9	42.9	47.7	69.0
28.....	92.7	43.1	27.8	64.3	43.6	53.6	68.8
Feb. 4.....	94.5	41.3	23.0	56.1	50.1	52.3	73.1
11.....	96.3	54.2	20.5	60.6	48.5	56.3	77.3
18.....	97.8	62.4	27.2	53.1	54.9	57.5	74.4
25.....	95.2	59.9	23.4	40.9	58.9	54.0	67.5
Mar. 4.....	85.1	45.9	17.2	42.7	59.2	50.8	73.2
11.....	82.1	43.2	15.8	50.4	61.3	51.4	69.2
18.....	69.2	53.1	14.4	63.7	58.8	55.6	71.7
25.....	35.5	60.8	11.6	40.4	59.9	44.1	84.7
Apr. 1.....	26.0	41.7	19.6	36.7	52.8	35.6	77.7
8.....	15.6	43.2	11.9	40.9	40.9	30.4	74.3
15.....	9.6	54.4	12.9	55.5	32.9	33.9	71.9
22.....	7.4	48.0	12.2	45.6	25.9	26.0	55.7
29.....	8.0	32.2	8.8	49.0	34.1	26.2	31.1
May 6.....	6.6	21.7	10.8	23.1	17.1	14.7	34.3
13.....	6.3	13.5	9.2	20.1	15.6	12.6	24.9
20.....	7.2	15.4	9.6	15.0	12.7	11.9	22.2
27.....	5.7	12.5	5.3	13.7	15.0	10.1	25.5
June 3.....	8.7	12.0	7.5	7.3	15.6	10.0	34.5

Note.--The week ending date is for the current 1994/95 year. The data for the 1989/90 through 1993/94 seasons represent the closest corresponding weeks to that date.

Source: Compiled from data of the Agricultural Marketing Service, U.S. Department of Agriculture.

Table 25
 Fresh-market tomatoes: U.S. shipments from selected sources and share of total, by selected time periods, 1990/91 to 1993/94 seasons

Season	October-June			November-May			December-April			
	Florida	California	Total	Florida	California	Total	Florida	California	Total	
	----- (Percent) ----- (1,000 pounds)			----- (Percent) ----- (1,000 pounds)			----- (Percent) ----- (1,000 pounds)			
1990/91.....	58.3	8.1	30.1	63.6	0.9	35.4	1,700.1	55.3	44.7	1,163.3
1991/92.....	77.2	8.5	13.6	84.8	0.3	14.7	1,537.3	81.4	18.6	943.0
1992/93.....	60.4	7.0	30.4	59.2	1.4	37.8	1,726.0	52.9	47.1	1,184.8
1993/94.....	57.1	9.2	33.6	64.5	1.4	42.7	1,570.2	52.4	47.6	1,255.1

¹ Less than 0.5 percent.

² Not reported.

Source: Compiled from U.S. Department of Agriculture, Agricultural Marketing Service, Marketing Florida Vegetables, Season Summaries, 1990/91-1993/94.

Table 26

Fresh-market tomatoes: Weekly arrivals at Boston and New York City wholesale terminal markets, by markets and by sources, Jan. 7-Dec. 30, 1994

		(1,000 pounds)									
Week ending	Boston					New York City					
	Calif-ornia	Florida	Mexico	Other	Total	Calif-ornia	Florida	Mexico	Other	Total	
Jan.	7	0	2,360	10	30	2,400	40	4,460	590	270	5,360
	14	0	1,580	20	60	1,660	0	6,930	850	110	7,890
	21	0	1,810	70	190	2,070	0	2,160	310	50	2,520
	28	0	2,380	60	60	2,500	0	1,710	200	90	2,000
Feb.	4	0	1,820	460	80	2,360	0	3,590	520	20	4,130
	11	0	1,660	470	60	2,190	0	1,950	290	10	2,250
	18	0	1,980	480	90	2,550	0	5,860	660	200	6,720
	25	0	1,320	580	80	1,980	0	3,580	510	60	4,150
Mar.	4	0	3,700	100	80	3,880	0	3,110	740	30	3,880
	11	0	1,810	750	190	2,750	0	3,130	200	0	3,330
	18	0	1,480	420	60	1,960	0	2,470	160	20	2,650
	25	0	2,080	250	50	2,380	0	4,430	980	150	5,560
Apr.	1	0	2,880	170	30	3,080	0	2,050	540	20	2,610
	8	0	2,630	170	120	2,920	0	3,310	110	10	3,430
	15	0	2,350	50	60	2,460	0	3,570	690	60	4,320
	22	0	2,290	10	40	2,340	0	3,710	350	0	4,060
	29	0	1,940	30	60	2,030	0	3,510	340	90	3,940
May	6	0	2,910	80	70	3,060	0	2,960	800	90	3,850
	13	0	2,840	70	80	2,990	0	6,410	360	90	6,860
	20	0	2,430	0	70	2,500	0	5,710	180	20	5,910
	27	0	2,370	0	150	2,520	0	3,390	240	130	3,760
June	3	0	2,350	20	300	2,670	0	2,960	250	0	3,210
	10	0	2,470	40	380	2,890	0	3,460	840	110	4,410
	17	0	2,290	0	860	3,150	170	1,520	0	250	1,940
	24	160	1,670	0	1,540	3,370	730	1,650	300	1,460	4,140
July	1	110	630	0	2,210	2,950	500	1,280	200	2,140	4,120
	8	560	450	0	1,300	2,310	580	1,260	260	1,270	3,370
	15	1,020	0	0	2,520	3,540	850	260	430	2,150	3,690
	22	990	0	0	2,300	3,290	110	0	60	1,540	1,710
	29	1,320	40	0	1,610	2,970	1,510	0	100	3,120	4,730
Aug.	5	1,940	0	0	1,810	3,750	1,520	0	600	3,650	5,770
	12	1,200	0	20	1,340	2,560	1,060	0	140	2,600	3,800
	19	0	0	0	0	0	0	0	0	0	0
	26	860	0	40	1,710	2,610	1,680	0	420	2,310	4,410
Sept.	2	720	0	0	1,970	2,690	2,150	0	170	1,640	3,960
	9	720	0	30	2,100	2,850	950	0	100	1,180	2,230
	16	200	0	30	1,690	1,920	1,250	0	310	1,690	3,250
	23	640	0	0	1,690	2,330	1,300	0	80	1,090	2,470
	30	610	160	0	1,720	2,490	960	80	60	1,740	2,840
Oct.	7	690	560	0	840	2,090	2,200	290	660	1,340	4,490
	14	570	1,140	10	870	2,590	1,060	200	130	660	2,050
	21	920	900	10	470	2,300	120	300	220	140	780
	28	430	790	20	100	1,340	3,110	460	130	940	4,640
Nov.	4	270	1,690	0	170	2,130	1,750	1,460	80	520	3,810
	11	330	1,660	0	70	2,060	780	660	40	120	1,600
	18	170	2,480	0	30	2,680	1,150	1,030	150	250	2,580
	25	260	1,420	10	30	1,720	550	820	240	80	1,690
Dec.	2	0	1,450	10	30	1,490	40	1,160	290	60	1,550
	9	200	1,770	60	30	2,060	330	940	210	40	1,520
	16	160	1,870	0	30	2,060	320	840	20	150	1,330
	23	160	1,460	130	30	1,780	320	2,570	120	20	3,030
	30	200	1,330	70	10	1,610	510	2,840	110	20	3,480

Note.--This table shows weekly arrivals at the wholesale terminal markets in selected cities. It should be noted that a significant share of shipments are sold directly from the shipping point and are not traded at the wholesale market. Nonetheless, the relative shares of product from the different sources sold at wholesale market are believed to be indicative of the overall trade for the region.

Source: Compiled from data of the Agricultural Marketing Services, U.S. Department of Agriculture.

Table 27
 Fresh-market tomatoes: Weekly arrivals at Boston and New York City wholesale terminal markets, by markets and by sources, Jan. 6-June 2, 1995

		(1,000 pounds)									
Week ending	Boston					New York City					
	Calif-ornia	Florida	Mexico	Other	Total	Calif-ornia	Florida	Mexico	Other	Total	
Jan. 6	240	1,740	80	20	2,080	260	2,870	170	0	3,300	
13	0	1,800	300	30	2,130	170	2,160	230	10	2,570	
20	0	1,860	420	80	2,360	0	1,910	200	30	2,140	
27	0	1,370	190	20	1,580	0	2,570	210	90	2,870	
Feb. 3	0	0	0	2,180	2,180	0	0	0	2,970	2,970	
10	0	2,080	290	30	2,400	0	2,490	330	30	2,850	
17	0	1,720	420	10	2,150	0	2,340	440	10	2,790	
24	0	1,670	410	20	2,100	0	1,090	130	50	1,270	
Mar. 3	0	1,720	620	190	2,530	0	1,590	560	330	2,480	
10	0	1,320	460	220	2,000	0	2,270	580	100	2,950	
17	0	1,500	490	30	2,020	0	2,650	710	20	3,380	
24	0	1,650	750	20	2,420	0	3,540	490	40	4,070	
31	0	1,450	1,000	70	2,520	0	2,320	420	30	2,770	
Apr. 7	0	1,210	470	30	1,710	0	1,810	620	50	2,480	
17	0	1,870	190	50	2,110	0	1,740	240	20	2,000	
21	0	2,140	260	80	2,480	0	2,260	450	0	2,710	
28	0	2,320	170	110	2,600	0	1,730	500	220	2,450	
May 5	0	2,850	140	110	3,100	0	2,780	630	10	3,420	
12	0	2,620	340	120	3,080	0	3,220	440	20	3,680	
19	0	2,900	70	140	3,110	0	2,730	340	20	3,090	
26	0	2,540	0	140	2,680	0	2,400	200	30	2,630	
June 2	0	2,040	140	200	2,380	40	4,190	260	20	4,510	

Note.--This table shows weekly arrivals at the wholesale terminal markets in selected cities. It should be noted that a significant share of shipments are sold directly from the shipping point and are not traded at the wholesale market. Nonetheless, the relative shares of product from the different sources sold at wholesale market are believed to be indicative of the overall trade for the region.

Source: Compiled from data of the Agricultural Marketing Services, U.S. Department of Agriculture.

Table 28

Fresh-market tomatoes: Weekly arrivals at Philadelphia and Chicago wholesale terminal markets, by markets and by sources, Jan. 7-Dec. 30, 1994

		(1,000 pounds)									
		Philadelphia					Chicago				
Week ending		Calif- ornia	Florida	Mexico	Other	Total	Calif- ornia	Florida	Mexico	Other	Total
Jan.	7	0	1,670	0	30	1,700	40	2,880	0	20	2,940
	14	0	1,520	30	50	1,600	0	1,680	20	10	1,710
	21	0	1,370	300	10	1,680	0	1,410	460	0	1,870
	28	0	1,400	160	30	1,590	0	2,150	250	30	2,430
Feb.	4	0	2,050	270	20	2,340	0	2,170	290	30	2,490
	11	0	1,060	210	30	1,300	0	1,720	450	70	2,240
	18	0	2,640	270	30	2,940	0	920	200	10	1,130
	25	0	870	340	20	1,230	0	1,680	850	0	2,530
Mar.	4	0	2,980	270	10	3,260	0	3,820	940	10	4,770
	11	0	1,030	520	30	1,580	0	1,520	580	0	2,100
	18	0	1,940	170	30	2,140	0	1,130	860	0	1,990
	25	0	980	240	30	1,250	0	1,370	740	30	2,140
Apr.	1	0	1,050	310	20	1,380	0	1,910	790	0	2,700
	8	0	2,720	130	40	2,890	0	2,320	780	10	3,110
	15	0	2,540	70	20	2,630	0	2,040	880	20	2,940
	22	0	2,150	20	20	2,190	0	1,850	450	10	2,310
	29	0	2,360	150	10	2,520	0	2,390	700	10	3,100
May	6	0	2,990	180	10	3,180	0	3,220	490	10	3,720
	13	0	2,600	120	10	2,730	0	1,310	340	0	1,650
	20	0	3,990	100	10	4,100	0	3,090	160	20	3,270
	27	0	790	60	30	880	0	2,820	180	40	3,040
June	3	0	590	60	20	670	0	1,300	130	10	1,440
	10	0	1,630	30	720	2,380	120	2,680	50	300	3,150
	17	280	3,020	70	2,180	5,550	830	1,500	0	80	2,410
	24	240	1,960	60	2,000	4,260	990	1,400	0	610	3,000
July	1	240	250	30	1,630	2,150	1,540	1,000	0	1,320	3,860
	8	230	160	100	1,600	2,090	1,650	400	0	1,080	3,130
	15	240	160	0	2,580	2,980	1,830	440	0	1,130	3,400
	22	640	40	0	1,750	2,430	2,050	0	0	1,310	3,360
	29	830	0	0	1,050	1,880	2,560	0	0	1,190	3,750
Aug.	5	550	0	0	740	1,290	2,530	0	0	880	3,410
	12	1,020	0	0	1,410	2,430	2,860	0	0	180	3,040
	19	0	0	0	0	0	0	0	0	0	0
	26	1,700	0	0	1,000	2,700	2,970	0	0	510	3,480
Sept.	2	430	0	0	810	1,240	2,500	0	60	700	3,260
	9	1,170	0	0	1,050	2,220	1,810	0	0	130	1,940
	16	780	0	30	1,970	2,780	2,380	0	100	750	3,230
	23	710	0	0	1,770	2,480	2,370	0	10	520	2,900
	30	500	0	0	1,080	1,580	2,680	0	190	240	3,110
Oct.	7	510	560	40	1,160	2,270	3,300	0	30	420	3,750
	14	520	780	0	480	1,780	1,830	50	0	320	2,200
	21	1,550	670	20	800	3,040	1,410	860	150	0	2,420
	28	830	990	0	830	2,650	1,520	1,180	100	0	2,800
Nov.	4	930	930	0	340	2,200	1,970	1,430	450	90	3,940
	11	200	750	0	30	980	1,300	1,400	100	200	3,000
	18	350	1,330	0	70	1,750	2,250	1,560	60	10	3,880
	25	10	480	0	0	490	1,980	2,590	290	10	4,870
Dec.	2	410	3,210	110	0	3,730	890	1,200	100	0	2,190
	9	190	1,410	120	0	1,720	520	2,080	40	0	2,640
	16	230	2,780	110	0	3,120	480	3,270	400	0	4,150
	23	240	3,270	300	0	3,810	400	1,880	150	0	2,430
	30	350	690	140	0	1,180	120	1,650	320	0	2,090

Note.--This table shows weekly arrivals at the wholesale terminal markets in selected cities. It should be noted that a significant share of shipments are sold directly from the shipping point and are not traded at the wholesale market. Nonetheless, the relative shares of product from the different sources sold at wholesale market are believed to be indicative of the overall trade for the region.

Source: Compiled from data of the Agricultural Marketing Services, U.S. Department of Agriculture.

Table 29
 Fresh-market tomatoes: Weekly arrivals at Philadelphia and Chicago wholesale terminal markets, by markets and by sources, Jan. 6-June 2, 1995

		(1,000 pounds)									
		Philadelphia					Chicago				
Week ending		Calif-ornia	Florida	Mexico	Other	Total	Calif-ornia	Florida	Mexico	Other	Total
Jan.	6	0	510	210	0	720	160	2,030	840	0	3,030
	13	160	880	260	0	1,300	240	1,240	860	0	2,340
	20	0	2,040	500	10	2,550	0	1,210	590	0	1,800
	27	0	670	650	10	1,330	0	1,110	990	0	2,100
Feb.	3	0	0	0	2,480	2,480	0	0	0	2,120	2,120
	10	0	1,690	660	30	2,380	0	1,310	850	10	2,170
	17	0	640	410	20	1,070	0	1,100	1,420	30	2,550
	24	0	3,680	520	40	4,240	0	830	980	0	1,810
Mar.	3	0	1,070	340	10	1,420	0	1,030	1,650	0	2,680
	10	0	1,570	370	30	1,970	0	1,690	1,550	0	3,240
	17	0	480	170	40	690	0	1,070	1,040	10	2,120
	24	0	1,310	730	40	2,080	0	840	1,920	0	2,760
	31	0	930	1,920	10	2,860	0	720	1,750	10	2,480
Apr.	7	0	470	790	20	1,280	0	830	1,390	0	2,220
	14	0	1,190	610	20	1,820	0	890	1,160	0	2,050
	21	0	1,910	570	30	2,510	0	1,150	1,210	0	2,360
	28	0	1,860	440	40	2,340	0	1,800	790	50	2,640
May	5	0	3,150	330	30	3,510	0	1,720	550	10	2,280
	12	0	3,860	220	20	4,100	0	2,760	660	10	3,430
	19	0	2,850	130	20	3,000	0	2,260	480	30	2,770
	26	160	3,820	40	10	4,030	120	1,820	520	20	2,480
June	2	40	880	20	30	970	80	1,040	350	10	1,480

Note.--This table shows weekly arrivals at the wholesale terminal markets in selected cities. It should be noted that a significant share of shipments are sold directly from the shipping point and are not traded at the wholesale market. Nonetheless, the relative shares of product from the different sources sold at wholesale market are believed to be indicative of the overall trade for the region.

Source: Compiled from data of the Agricultural Marketing Services, U.S. Department of Agriculture.

Table 30
 Fresh-market tomatoes: Weekly arrivals at Dallas and Los Angeles wholesale terminal
 markets, by markets and by sources, Jan. 7-Dec. 30, 1994

		(1,000 pounds)									
Week ending	Dallas					Los Angeles					
	Calif- ornia	Florida	Mexico	Other	Total	Calif- ornia	Florida	Mexico	Other	Total	
Jan.	7	0	800	450	0	1,250	170	2,210	1,980	10	4,370
	14	0	1,010	500	0	1,510	100	2,270	2,250	10	4,630
	21	0	940	500	0	1,440	0	1,160	1,140	10	2,310
	28	0	550	590	0	1,140	0	2,940	3,030	30	6,000
Feb.	4	0	280	730	0	1,010	0	2,190	2,430	10	4,630
	11	0	640	1,040	0	1,680	0	1,800	2,650	10	4,460
	18	0	580	840	0	1,420	0	2,350	2,620	10	4,980
	25	0	440	810	0	1,250	0	1,330	2,590	0	3,920
Mar.	4	0	1,080	920	0	2,000	0	3,560	3,340	20	6,920
	11	0	520	610	0	1,130	0	860	4,100	10	4,970
	18	0	320	680	0	1,000	0	720	3,250	10	3,980
	25	0	710	1,220	0	1,930	0	1,550	4,050	10	5,610
Apr.	1	0	320	1,220	0	1,540	0	2,140	4,450	20	6,610
	8	0	510	920	20	1,450	0	790	4,400	10	5,200
	15	0	990	450	0	1,440	0	1,910	3,340	10	5,260
	22	0	1,150	640	0	1,790	0	2,550	2,080	10	4,640
	29	0	1,130	650	0	1,780	0	2,960	2,150	10	5,120
May	6	0	490	460	0	950	0	2,770	2,610	30	5,410
	13	0	1,230	510	20	1,760	0	3,110	1,710	30	4,850
	20	30	1,160	270	10	1,470	300	3,490	2,550	0	6,340
	27	0	0	0	0	0	700	3,250	1,760	40	5,750
June	3	190	890	360	10	1,450	810	1,240	1,720	40	3,810
	10	260	330	270	80	940	2,420	510	2,920	0	5,850
	17	1,360	780	240	180	2,560	3,680	280	2,140	40	6,140
	24	1,020	230	70	120	1,440	3,630	40	1,740	20	5,430
July	1	1,050	30	160	320	1,560	3,260	0	1,850	480	5,590
	8	960	0	0	350	1,310	3,490	0	1,540	110	5,140
	15	1,540	0	0	200	1,740	4,150	0	1,300	120	5,570
	22	320	0	0	60	380	4,510	0	1,180	70	5,760
	29	2,160	0	50	190	2,400	2,220	0	1,090	80	3,390
Aug.	5	990	0	50	510	1,550	1,480	0	1,750	50	3,280
	12	1,680	0	0	130	1,810	2,080	0	1,750	100	3,930
	19	0	0	0	0	0	0	0	0	0	0
	26	2,190	0	0	240	2,430	2,060	0	2,280	70	4,410
Sept.	2	1,600	0	40	90	1,730	2,670	0	2,240	90	5,000
	9	1,370	0	0	90	1,460	2,100	0	2,280	40	4,420
	16	2,730	0	40	190	2,960	4,110	0	1,810	40	5,960
	23	1,710	0	0	90	1,800	3,370	0	1,210	30	4,610
	30	1,410	0	0	90	1,500	3,970	0	1,490	50	5,510
Oct.	7	990	0	0	190	1,180	3,600	0	1,560	30	5,190
	14	1,380	50	0	50	1,480	2,210	0	1,690	10	3,910
	21	1,700	0	0	10	1,710	3,980	0	1,540	10	5,530
	28	1,310	0	0	20	1,330	3,600	0	1,200	10	4,810
Nov.	4	990	460	10	10	1,470	3,090	0	730	20	3,840
	11	710	220	100	0	1,030	3,020	0	730	10	3,760
	18	470	950	200	0	1,620	3,380	320	960	10	4,670
	25	130	360	50	0	540	2,120	350	1,090	0	3,560
Dec.	2	230	970	40	10	1,250	1,940	850	1,990	20	4,800
	9	140	1,460	120	0	1,720	520	1,130	1,840	10	3,500
	16	630	1,130	50	0	1,810	380	2,340	390	1,390	4,500
	23	0	550	140	0	690	40	2,130	1,280	20	3,470
	30	0	450	110	0	560	10	920	1,250	10	2,190

Note.--This table shows weekly arrivals at the wholesale terminal markets in selected cities. It should be noted that a significant share of shipments are sold directly from the shipping point and are not traded at the wholesale market. Nonetheless, the relative shares of product from the different sources sold at wholesale market are believed to be indicative of the overall trade for the region.

Source: Compiled from data of the Agricultural Marketing Services, U.S. Department of Agriculture.

Table 31
 Fresh-market tomatoes: Weekly arrivals at Dallas and Los Angeles wholesale terminal
 markets, by markets and by sources, Jan. 6-June 2, 1995

Week ending	(1,000 pounds)					(1,000 pounds)				
	Dallas Calif- ornia	Florida	Mexico	Other	Total	Los Angeles Calif- ornia	Florida	Mexico	Other	Total
Jan. 6	0	110	670	0	780	10	1,960	2,780	0	4,750
13	0	430	700	0	1,130	0	1,060	2,440	10	3,510
20	0	840	1,000	0	1,840	0	480	2,200	0	2,680
27	0	90	1,390	0	1,480	0	530	2,840	0	3,370
Feb. 3	0	0	0	1,440	1,440	0	0	0	3,350	3,350
10	0	320	1,790	0	2,110	0	320	4,350	0	4,670
17	0	220	1,730	0	1,950	0	440	5,170	0	5,610
24	0	360	1,750	0	2,110	0	560	3,710	0	4,270
Mar. 3	0	720	1,620	30	2,370	0	260	4,720	0	4,980
10	0	590	1,590	0	2,180	0	320	4,430	10	4,760
17	0	620	1,670	0	2,290	0	200	3,450	10	3,660
24	0	480	1,980	0	2,460	0	440	4,840	0	5,280
31	0	340	1,960	0	2,300	0	280	6,250	10	6,540
Apr. 7	0	630	1,760	10	2,400	0	300	5,410	10	5,720
14	0	260	1,810	0	2,070	0	240	3,780	10	4,030
21	0	1,120	1,500	0	2,620	0	600	5,170	10	5,780
28	0	940	1,620	0	2,560	0	990	4,720	0	5,710
May 5	0	1,310	1,650	110	3,070	0	2,520	6,030	20	8,570
12	40	1,700	1,320	10	3,070	80	3,070	3,690	40	6,880
19	10	1,740	1,000	80	2,830	350	3,050	3,400	20	6,820
26	40	1,430	420	70	1,960	470	2,670	3,400	20	6,560
June 2	390	1,860	660	250	3,160	630	2,300	4,090	50	7,070

Note.--This table shows weekly arrivals at the wholesale terminal markets in selected cities. It should be noted that a significant share of shipments are sold directly from the shipping point and are not traded at the wholesale market. Nonetheless, the relative shares of product from the different sources sold at wholesale market are believed to be indicative of the overall trade for the region.

Source: Compiled from data of the Agricultural Marketing Services, U.S. Department of Agriculture.

Table 32
 Fresh-market tomatoes: Monthly arrivals of tomatoes in 22 cities, by sources,
 1990-94

(1,000 cwt)					
Source/Month	1990	1991	1992	1993	1994
Florida:					
Jan.....	282	838	849	838	824
Feb.....	56	489	702	646	749
Mar.....	453	541	841	837	743
Apr.....	954	632	1,126	838	928
May.....	1,249	880	1,284	889	1,181
June.....	498	478	993	1,149	717
July.....	31	45	162	118	78
Aug.....	0	0	0	0	0
Sept.....	5	10	0	1	5
Oct.....	167	193	281	161	252
Nov.....	436	448	523	555	591
Dec.....	638	900	954	760	783
Total...	4,769	5,454	7,715	6,792	6,851
California:					
Jan.....	6	1	2	2	9
Feb.....	0	0	0	0	0
Mar.....	0	0	0	0	0
Apr.....	0	0	0	0	0
May.....	22	29	30	82	21
June.....	300	121	281	268	299
July.....	518	424	545	514	611
Aug.....	543	518	550	694	724
Sept.....	452	631	592	745	662
Oct.....	685	902	675	795	643
Nov.....	455	461	456	537	401
Dec.....	58	54	54	71	89
Total...	3,039	3,141	3,185	3,709	3,459
All other U.S.:					
Jan.....	1	0	3	3	6
Feb.....	12	1	17	17	5
Mar.....	10	18	33	9	8
Apr.....	1	11	12	5	7
May.....	4	8	9	15	7
June.....	266	283	108	162	332
July.....	553	692	612	771	575
Aug.....	455	432	520	557	525
Sept.....	349	310	497	369	460
Oct.....	109	128	166	144	177
Nov.....	12	16	17	17	27
Dec.....	2	2	1	2	1
Total...	1,774	1,901	1,995	2,071	2,130
Imports:					
Jan.....	411	274	254	243	274
Feb.....	547	445	223	472	392
Mar.....	535	524	245	569	567
Apr.....	177	528	215	479	393
May.....	112	297	191	328	270
June.....	113	205	119	186	218
July.....	88	111	60	94	107
Aug.....	66	56	58	80	131
Sept.....	50	46	48	74	116
Oct.....	63	62	40	92	99
Nov.....	75	101	41	130	103
Dec.....	136	139	88	162	155
Total...	2,373	2,788	1,582	2,909	2,825
Total Arrivals:					
Jan.....	700	1,113	1,108	1,086	1,113
Feb.....	615	935	942	1,135	1,146
Mar.....	998	1,083	1,119	1,415	1,318
Apr.....	1,132	1,171	1,353	1,323	1,328
May.....	1,387	1,214	1,514	1,314	1,479
June.....	1,177	1,087	1,501	1,765	1,566
July.....	1,190	1,272	1,379	1,497	1,371
Aug.....	1,064	1,006	1,128	1,331	1,380
Sept.....	856	997	1,137	1,189	1,243
Oct.....	1,024	1,285	1,162	1,192	1,171
Nov.....	978	1,026	1,037	1,239	1,122
Dec.....	834	1,095	1,097	995	1,028
Total...	11,955	13,284	14,477	15,481	15,265

Source: Compiled from data of the Agricultural Marketing Service, U.S. Department of Agriculture.

Table 33
 Fresh-market tomatoes: Percentage of monthly arrivals of tomatoes in 22
 cities, by sources, 1990-94

(Percent)						
Source/Month	1990	1991	1992	1993	1994	Average
Florida:						
Jan.....	40.3	75.3	76.6	77.2	74.0	68.7
Feb.....	9.1	52.3	74.5	56.9	65.4	51.6
Mar.....	45.4	50.0	75.2	59.2	56.4	57.2
Apr.....	84.3	54.0	83.2	63.3	69.9	70.9
May.....	90.1	72.5	84.8	67.7	79.9	79.0
June.....	42.3	44.0	66.2	65.1	45.8	52.7
July.....	2.6	3.5	11.7	7.9	5.7	6.3
Aug.....	0.0	0.0	0.0	0.0	0.0	0.0
Sept.....	0.6	1.0	0.0	0.1	0.4	0.4
Oct.....	16.3	15.0	24.2	13.5	21.5	18.1
Nov.....	44.6	43.7	50.4	44.8	52.7	47.2
Dec.....	76.5	82.2	87.0	76.4	76.2	79.6
Average.....	39.9	41.1	53.3	43.9	44.9	44.6
California:						
Jan.....	0.9	0.1	0.2	0.2	0.8	0.4
Feb.....	0.0	0.0	0.0	0.0	0.0	0.0
Mar.....	0.0	0.0	0.0	0.0	0.0	0.0
Apr.....	0.0	0.0	0.0	0.1	0.0	0.0
May.....	1.6	2.4	2.0	6.2	1.4	2.7
June.....	25.5	11.1	18.7	15.2	19.1	17.9
July.....	43.5	33.3	39.5	34.3	44.6	39.1
Aug.....	51.0	51.5	48.8	52.1	52.5	51.2
Sept.....	52.8	63.3	52.1	62.7	53.3	56.8
Oct.....	66.9	70.2	58.1	66.7	54.9	63.4
Nov.....	46.5	44.9	44.0	43.3	35.7	42.9
Dec.....	7.0	4.9	4.9	7.1	8.7	6.5
Average.....	25.4	23.6	22.0	24.0	22.7	23.5
All other U.S.:						
Jan.....	0.1	0.0	0.3	0.3	0.5	0.2
Feb.....	2.0	0.1	1.8	1.5	0.4	1.2
Mar.....	1.0	1.7	2.9	0.6	0.6	1.4
Apr.....	0.1	0.9	0.9	0.4	0.5	0.6
May.....	0.3	0.7	0.6	1.1	0.5	0.6
June.....	22.6	26.0	7.2	9.2	21.2	17.2
July.....	46.5	54.4	44.4	51.5	41.9	47.7
Aug.....	42.8	42.9	46.1	41.8	38.0	42.3
Sept.....	40.8	31.1	43.7	31.0	37.0	36.7
Oct.....	10.6	10.0	14.3	12.1	15.1	12.4
Nov.....	1.2	1.6	1.6	1.4	2.4	1.6
Dec.....	0.2	0.2	0.1	0.2	0.1	0.2
Average.....	14.8	14.3	13.8	13.4	14.0	14.1
Imports:						
Jan.....	58.7	24.6	22.9	22.4	24.6	30.7
Feb.....	88.9	47.6	23.7	41.6	34.2	47.2
Mar.....	53.6	48.4	21.9	40.2	43.0	41.4
Apr.....	15.6	45.1	15.9	36.2	29.6	28.5
May.....	8.1	24.5	12.6	25.0	18.3	17.7
June.....	9.6	18.9	7.9	10.5	13.9	12.2
July.....	7.4	8.7	4.4	6.3	7.8	6.9
Aug.....	6.2	5.6	5.1	6.0	9.5	6.5
Sept.....	5.8	4.6	4.2	6.2	9.3	6.0
Oct.....	6.2	4.8	3.4	7.7	8.5	6.1
Nov.....	7.7	9.8	4.0	10.5	9.2	8.2
Dec.....	16.3	12.7	8.0	16.3	15.1	13.7
Average.....	19.8	21.0	10.9	18.8	18.5	17.8

Source: Compiled from data of the Agricultural Marketing Service, U.S. Department of Agriculture.

PRICES

Table 34

Fresh-market tomatoes: Tuesday F.O.B. shipping prices, Florida, Nov. 29-May 30, 1989/90 to 1994/1995, mature green extra-large style, 25-pound carton

(Dollars)

Date	1989/90	1990/91	1991/92	1992/93	1993/94	1989/90- 1993/94 average	1994/95
Nov. 29.....	10.00	7.00	5.00	13.00	8.00	8.60	12.50
Dec. 6.....	12.00	8.00	3.75	13.50	14.00	10.25	16.00
13.....	15.00	11.00	3.75	15.00	20.00	12.95	20.00
20.....	(¹)	12.00	4.00	12.00	20.00	12.00	10.00
27.....	(¹)	² 12.00	4.50	10.00	20.00	11.63	11.50
Jan. 3.....	(¹)	² 7.00	8.50	6.00	16.00	9.38	12.00
10.....	30.00	9.00	10.00	12.00	16.00	15.40	13.50
17.....	33.50	7.50	14.00	15.00	16.00	17.20	12.50
24.....	(¹)	7.00	14.00	² 14.00	10.00	11.25	12.00
31.....	38.00	7.00	11.00	10.00	9.00	15.00	14.00
Feb. 7.....	40.00	8.00	16.00	9.00	9.00	16.40	14.00
14.....	(¹)	11.00	22.00	6.00	6.00	11.25	10.00
21.....	32.00	10.00	23.00	4.00	5.00	14.80	7.00
28.....	25.00	7.00	23.50	4.25	8.00	13.55	7.50
Mar. 7.....	22.00	9.00	22.00	7.00	10.00	14.00	8.00
14.....	17.00	12.00	20.00	10.50	7.00	13.30	14.00
21.....	8.00	18.00	22.00	7.50	9.00	12.90	14.25
28.....	6.00	15.50	² 28.00	8.00	8.00	13.10	14.00
Apr. 4.....	5.00	16.00	28.00	8.50	5.00	12.50	16.00
11.....	4.00	20.00	12.00	14.00	8.50	11.70	14.00
18.....	4.00	19.00	8.00	15.00	5.00	10.20	8.50
25.....	4.00	16.00	4.50	20.00	6.00	10.10	5.00
May 2.....	4.50	16.00	4.00	20.00	9.00	10.70	4.50
9.....	4.00	18.00	7.00	18.00	8.00	11.00	3.50
16.....	7.00	18.00	5.00	18.00	5.50	10.70	3.50
23.....	8.00	19.00	4.00	18.00	7.50	11.30	3.75
30.....	6.50	18.00	4.00	12.00	8.00	9.70	8.50

¹ Supplies were insufficient to quote prices.

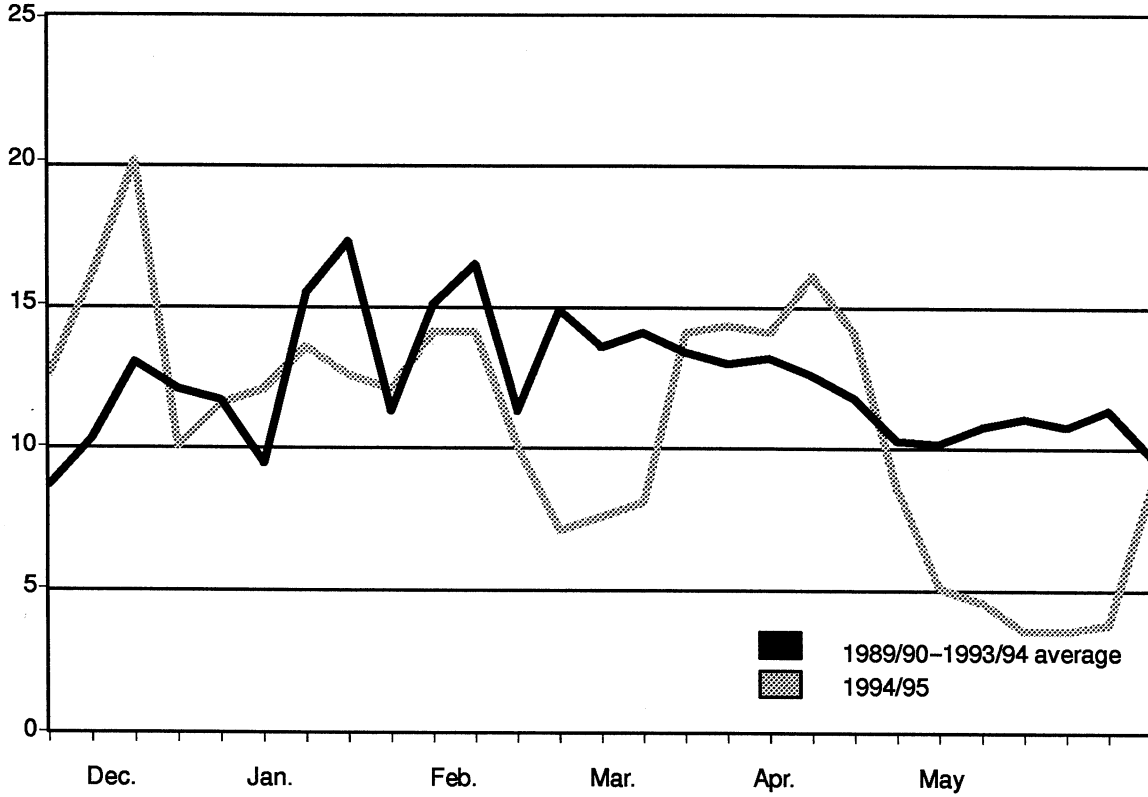
² Wednesday price.

Note.--The date is for the current 1994/95 year. The data for the 1989/90 through 1993/94 seasons represent the closest corresponding Tuesdays to that date.

Source: Compiled from data of the Agricultural Marketing Service, U.S. Department of Agriculture.

Figure 5
Fresh-market tomatoes: Tuesday F.O.B. shipping prices, Florida, mature green extra-large, Nov. 29-May 30, 1989/90-1993/94 5-year average and 1994/95

Dollars per carton



Source: Compiled from data of the Agriculture Marketing Service, U.S. Department of Agriculture.

Table 35

Fresh-market tomatoes: Tuesday F.O.B. shipping prices, Florida, Nov. 29-May 30, 1989/90 to 1994/95, mature green large style, 25-pound carton

(Dollars)

Date	1989/90	1990/91	1991/92	1992/93	1993/94	1989/90- 1993/94 average	1994/95
Nov. 29.....	7.00	5.00	4.75	10.00	7.00	6.75	10.00
Dec. 06.....	8.50	7.00	3.50	10.50	14.00	8.70	13.00
13.....	12.00	9.00	3.00	13.00	19.00	11.20	17.00
20.....	(¹)	9.00	4.00	12.00	19.00	11.00	9.00
27.....	(¹)	² 8.00	4.25	10.00	19.00	10.31	9.50
Jan. 3.....	(¹)	² 5.00	7.50	7.00	15.00	8.63	10.00
10.....	28.00	6.00	9.00	12.00	15.50	14.10	12.00
17.....	31.00	5.00	14.00	13.00	16.00	15.80	12.50
24.....	(¹)	6.00	14.00	² 12.00	9.00	10.25	12.00
31.....	37.00	6.00	11.00	8.00	7.00	13.80	13.50
Feb. 7.....	38.00	7.00	16.00	7.00	6.50	14.90	13.00
14.....	(¹)	10.00	19.50	6.00	5.00	10.13	8.00
21.....	28.00	10.00	21.00	5.00	4.00	13.60	6.00
28.....	20.00	6.00	19.00	5.75	7.00	11.55	7.00
Mar. 7.....	18.00	8.00	19.00	6.00	9.00	12.00	8.00
14.....	14.00	11.00	17.00	10.00	7.00	11.80	13.00
21.....	7.00	17.00	20.00	6.00	9.00	11.80	14.25
28.....	5.00	12.00	² 27.00	6.00	8.00	11.60	12.00
Apr. 4.....	4.00	11.00	27.00	6.50	5.00	10.70	13.50
11.....	3.00	16.00	11.00	12.00	7.00	9.80	11.00
18.....	3.00	15.50	8.00	13.00	4.00	8.70	6.50
25.....	3.50	13.00	4.50	18.00	6.00	9.00	4.00
May 2.....	4.50	13.00	4.00	18.00	8.00	9.50	5.00
9.....	4.00	16.00	6.00	17.00	7.00	10.00	3.50
16.....	6.00	15.00	3.75	17.00	4.50	9.25	3.75
23.....	7.00	16.00	3.00	16.00	7.00	9.80	5.00
30.....	5.50	16.00	5.00	10.00	8.00	8.90	8.50

¹ Supplies were insufficient to quote prices.

² Wednesday price.

Note.--The date is for the current 1994/95 year. The data for the 1989/90 through 1993/94 seasons represent the closest corresponding Tuesdays to that date.

Source: Compiled from data of the Agricultural Marketing Service, U.S. Department of Agriculture.

Table 36

Fresh-market tomatoes: Tuesday F.O.B. shipping prices, Florida, Nov. 29-May 30, 1989/90 to 1994/1995, mature green medium style, 25-pound carton

(Dollars)

Date	1989/90	1990/91	1991/92	1992/93	1993/94	1989/90- 1993/94 average	1994/95
Nov. 29.....	5.00	5.00	4.50	7.50	6.00	5.60	8.00
Dec. 06.....	5.00	5.50	3.25	8.00	12.00	6.75	9.00
13.....	6.00	6.00	3.00	11.00	18.00	8.80	12.00
20.....	(¹)	5.00	4.00	12.00	18.00	9.75	8.00
27.....	(¹)	² 4.00	4.25	10.00	16.50	8.69	8.00
Jan. 3.....	(¹)	² 4.00	7.00	7.00	14.00	8.00	8.00
10.....	25.00	5.00	9.00	12.00	15.00	13.20	11.00
17.....	30.00	4.00	14.00	12.00	16.00	15.20	12.50
24.....	(¹)	6.00	14.00	² 9.00	7.50	9.13	12.00
31.....	35.00	6.00	11.00	6.00	5.50	12.70	12.50
Feb. 7.....	36.00	7.00	16.00	6.00	5.00	14.00	9.50
14.....	(¹)	10.00	18.00	6.00	5.00	9.75	6.00
21.....	25.00	10.00	19.00	5.00	4.00	12.60	4.00
28.....	18.00	6.00	16.00	5.75	6.00	10.35	6.50
Mar. 7.....	16.00	8.00	17.00	6.00	8.00	11.00	7.00
14.....	12.00	10.00	15.00	9.00	7.00	10.60	9.50
21.....	7.00	15.00	18.00	5.00	9.00	10.80	10.25
28.....	5.00	8.00	² 25.00	4.50	8.00	10.10	6.00
Apr. 4.....	4.00	7.00	25.00	4.50	5.00	9.10	8.00
11.....	3.00	10.00	11.00	8.00	5.00	7.40	8.00
18.....	3.00	10.00	8.00	7.50	3.00	6.30	5.00
25.....	3.50	9.00	4.50	12.00	6.00	7.00	3.75
May 2.....	3.50	9.00	4.00	14.50	7.00	7.60	5.00
9.....	4.00	12.00	4.50	15.50	5.50	8.30	3.50
16.....	5.00	12.00	2.75	15.50	4.00	7.85	4.00
23.....	6.00	14.00	3.00	12.00	6.50	8.30	5.00
30.....	5.50	14.00	5.00	8.00	8.00	8.10	8.50

¹ Supplies were insufficient to quote prices.

² Wednesday price.

Note.--The date is for the current 1994/95 year. The data for the 1989/90 through 1993/94 seasons represent the closest corresponding Tuesdays to that date.

Source: Compiled from data of the Agricultural Marketing Service, U.S. Department of Agriculture.

Table 37

Fresh-market tomatoes: Tuesday F.O.B. shipping prices, Nogales, AZ, Jan. 3-
May 2, 1989/90 to 1994/95, improved vine-ripe varieties, 2-layer 4x5 pack

(Dollars)

Date	1989/90	1990/91	1991/92	1992/93	1993/94	1989/90- 1993/94 average	1994/95
Jan. 3.....	² 19.00	(¹)	8.00	(¹)	16.98	14.66	12.65
10.....	20.00	(¹)	8.50	(¹)	17.50	15.33	15.15
17.....	25.00	² 4.00	9.00	10.00	17.15	13.03	10.65
24.....	24.50	4.50	8.50	10.00	12.05	11.91	10.65
31.....	² 30.00	4.50	(¹)	11.00	9.95	13.86	14.05
Feb. 7.....	30.00	5.00	15.00	9.00	10.58	13.92	14.05
14.....	30.00	7.00	15.00	5.50	6.40	12.78	8.05
21.....	22.50	5.00	(¹)	4.00	4.55	9.01	5.65
28.....	22.50	5.00	² 20.00	3.50	6.65	11.53	6.65
Mar. 7.....	17.00	7.50	18.00	4.50	8.05	11.01	8.00
14.....	11.00	9.00	(¹)	8.00	5.55	8.39	14.65
21.....	9.00	13.00	30.00	4.00	7.55	12.71	14.00
28.....	6.50	8.00	23.00	4.00	5.58	9.42	8.65
Apr. 4.....	4.00	10.00	13.00	8.00	5.48	8.10	13.15
11.....	(¹)	13.00	11.00	12.00	8.15	11.04	15.50
18.....	(¹)	10.00	³ 5.50	12.00	7.15	8.66	8.90
25.....	(¹)	10.00	(¹)	15.00	7.15	10.72	6.90
May 2.....	(¹)	(¹)	(¹)	20.00	8.15	14.08	7.90

¹ Supplies were insufficient to quote prices.

² Wednesday price.

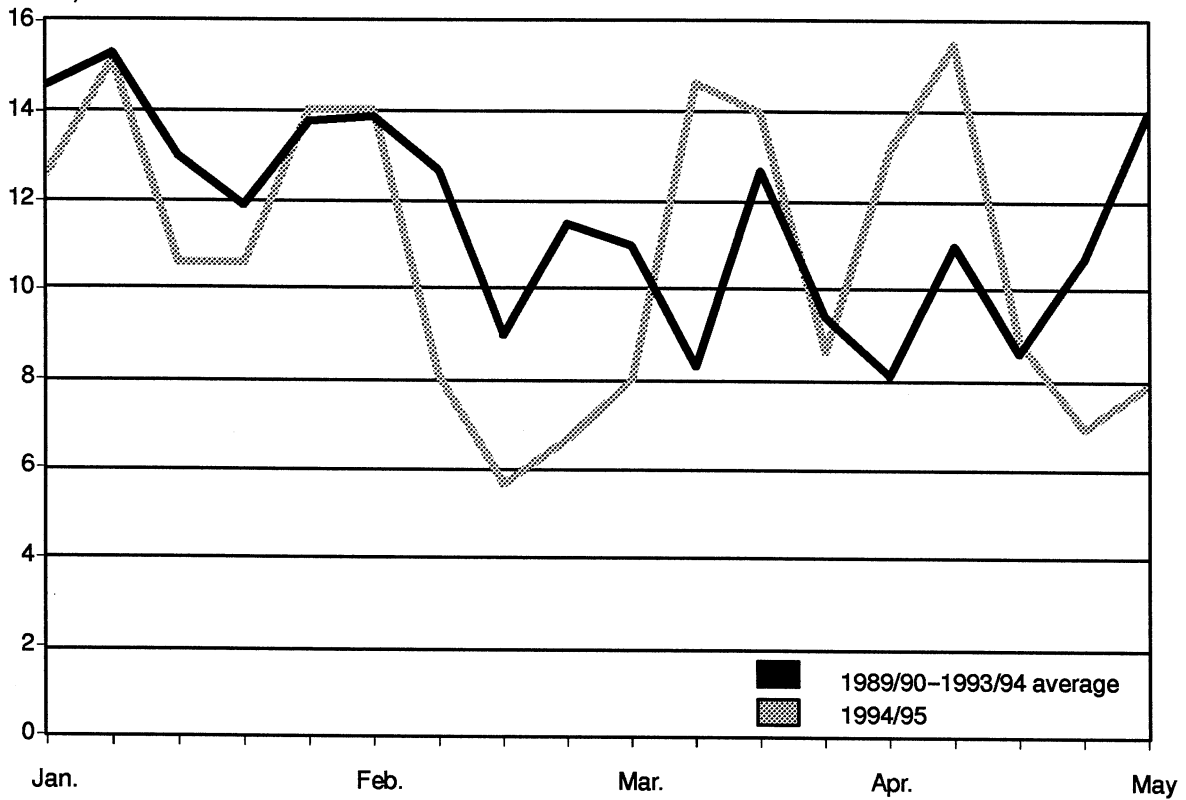
³ Monday price.

Note.--The date is for the current 1994/95 year. The data for the 1989/90 through 1993/94 seasons represent the closest corresponding Tuesdays to that date.

Source: Compiled from data of the Agricultural Marketing Service, U.S. Department of Agriculture.

Figure 6
Fresh-market tomatoes: Tuesday F.O.B. shipping prices, Nogales, AZ, vine ripe, 4x5 size, Jan. 3-May 2, 1989/90-1993/94 5-year average and 1994/95

Dollars per carton



Source: Compiled from data of the Agriculture Marketing Service, U.S. Department of Agriculture.

Table 38

Fresh-market tomatoes: Tuesday F.O.B. shipping prices, Nogales, AZ, Jan. 3-May 2, 1989/90 to 1994/95, improved vine-ripe varieties, 2-layer 5x5 pack

(Dollars)

Date	1989/90	1990/91	1991/92	1992/93	1993/94	1989/90- 1993/94 average	1994/95
Jan. 3.....	² 19.00	(¹)	8.00	(¹)	14.98	13.99	8.65
10.....	20.00	(¹)	8.50	(¹)	15.50	14.67	13.15
17.....	25.00	² 4.00	9.00	8.50	14.65	12.23	7.65
24.....	24.50	4.50	8.50	8.00	9.65	11.03	8.65
31.....	² 30.00	4.50	(¹)	8.50	8.45	12.86	12.65
Feb. 7.....	30.00	5.00	15.00	7.50	8.15	13.13	11.65
14.....	30.00	7.00	15.00	4.00	4.93	12.19	6.05
21.....	22.50	5.00	(¹)	3.00	3.58	8.52	4.65
28.....	22.50	5.00	² 20.00	2.75	5.65	11.18	4.65
Mar. 7.....	17.00	7.50	18.00	3.50	7.05	10.61	7.00
14.....	11.00	9.00	(¹)	8.00	5.05	8.26	13.40
21.....	9.00	13.00	30.00	3.50	6.55	12.41	12.65
28.....	6.50	8.00	23.00	3.25	5.48	9.25	7.65
Apr. 4.....	4.00	10.00	13.00	6.50	4.65	7.63	11.50
11.....	(¹)	13.00	11.00	10.00	7.15	10.29	13.50
18.....	(¹)	10.00	³ 5.50	8.00	5.55	7.26	6.05
25.....	(¹)	10.00	(¹)	12.50	6.15	9.55	5.15
May 2.....	(¹)	(¹)	(¹)	18.00	6.65	12.33	6.00

¹ Supplies were insufficient to quote prices.

² Wednesday price.

³ Monday price.

Note.--The date is for the current 1994/95 year. The data for the 1989/90 through 1993/94 seasons represent the closest corresponding Tuesdays to that date.

Source: Compiled from data of the Agricultural Marketing Service, U.S. Department of Agriculture.

Table 39

Fresh-market tomatoes: Tuesday F.O.B. shipping prices, Nogales, AZ, Jan. 3-May 2, 1989/90 to 1994/95, improved vine-ripe varieties, 2-layer 5x6 pack

(Dollars)

Date	1989/90	1990/91	1991/92	1992/93	1993/94	1989/90- 1993/94 average	1994/95
Jan. 3.....	² 17.00	(¹)	7.00	(¹)	12.98	12.33	6.65
10.....	20.00	(¹)	7.00	(¹)	13.95	13.65	11.15
17.....	25.00	² 3.00	8.00	7.50	13.65	11.43	7.65
24.....	24.50	3.50	6.50	6.50	8.65	9.93	8.15
31.....	² 30.00	2.50	(¹)	6.00	7.45	11.49	10.65
Feb. 7.....	30.00	3.50	15.00	5.50	6.95	12.19	9.05
14.....	30.00	5.50	14.00	3.25	4.40	11.43	5.05
21.....	21.50	3.50	(¹)	2.50	3.58	7.77	3.65
28.....	20.00	3.50	² 20.00	2.50	4.15	10.03	4.05
Mar. 7.....	15.00	6.00	18.00	3.50	6.48	9.80	6.00
14.....	9.00	7.50	(¹)	7.50	4.55	7.14	12.65
21.....	7.00	11.00	30.00	2.75	6.08	11.37	11.50
28.....	5.50	5.50	21.00	2.75	5.05	7.96	6.50
Apr. 4.....	3.50	6.00	13.00	5.50	4.65	6.53	9.50
11.....	(¹)	10.00	10.00	8.00	6.15	8.54	11.15
18.....	(¹)	6.00	³ 4.00	6.00	4.55	5.14	4.65
25.....	(¹)	6.00	(¹)	11.50	4.65	7.38	4.35
May 2.....	(¹)	(¹)	(¹)	13.00	5.65	9.33	5.40

¹ Supplies were insufficient to quote prices.² Wednesday price.³ Monday price.

Note.--The date is for the current 1994/95 year. The data for the 1989/90 through 1993/94 seasons represent the closest corresponding Tuesdays to that date.

Source: Compiled from data of the Agricultural Marketing Service, U.S. Department of Agriculture.

Table 40

Fresh-market tomatoes: Tuesday F.O.B. shipping prices, Nogales, AZ, Jan. 3-May 2, 1989/90 to 1994/95, improved vine-ripe varieties, 3-layer 6x6 pack

(Dollars)

Date	1989/90	1990/91	1991/92	1992/93	1993/94	1989/90- 1993/94 average	1994/95
Jan. 3.....	² 18.00	(¹)	9.00	(¹)	(¹)	13.50	8.15
10.....	20.00	(¹)	10.00	(¹)	16.45	15.48	13.65
17.....	25.00	(¹)	11.50	10.00	17.65	16.04	11.65
24.....	25.00	5.00	11.00	9.00	12.48	12.50	10.65
31.....	² 32.00	4.00	(¹)	7.50	8.95	13.11	13.50
Feb. 7.....	32.00	5.50	15.00	6.00	8.45	13.39	12.65
14.....	32.00	7.50	15.00	4.25	6.35	13.02	7.15
21.....	22.50	5.50	(¹)	5.50	4.55	9.51	5.15
28.....	22.50	5.50	² 20.00	6.00	5.65	11.93	4.65
Mar. 7.....	17.00	8.00	20.00	7.00	8.05	12.01	6.50
14.....	12.00	9.50	(¹)	9.50	5.65	9.16	12.15
21.....	9.00	13.00	30.00	5.50	7.55	13.01	13.00
28.....	7.00	7.00	25.00	4.50	6.48	10.00	7.15
Apr. 4.....	4.00	6.50	16.00	4.50	5.58	7.32	10.65
11.....	(¹)	9.00	12.00	7.00	5.65	8.41	9.65
18.....	(¹)	6.00	³ 6.00	6.00	5.05	5.76	5.15
25.....	(¹)	6.00	(¹)	12.00	6.15	8.05	4.50
May 2.....	(¹)	(¹)	(¹)	14.00	6.55	10.28	6.40

¹ Supplies were insufficient to quote prices.

² Wednesday price.

³ Monday price.

Note.--The date is for the current 1994/95 year. The data for the 1989/90 through 1993/94 seasons represent the closest corresponding Tuesdays to that date.

Source: Compiled from data of the Agricultural Marketing Service, U.S. Department of Agriculture.

Table 41

Fresh-market tomatoes: Tuesday F.O.B. shipping prices, Nogales, AZ, Jan. 3-May 2, 1989/90 to 1994/95, improved vine-ripe varieties, 3-layer 6x7 pack

(Dollars)

Date	1989/90	1990/91	1991/92	1992/93	1993/94	1989/90- 1993/94 average	1994/95
Jan. 3.....	² 16.00	(¹)	9.00	(¹)	(¹)	12.50	6.65
10.....	19.00	(¹)	10.00	(¹)	15.50	14.83	11.15
17.....	25.00	(¹)	11.00	9.00	14.15	14.79	10.15
24.....	25.00	4.00	11.00	8.00	10.48	11.70	9.65
31.....	² 32.00	3.50	(¹)	6.50	7.45	12.36	11.65
Feb. 7.....	32.00	4.50	15.00	5.00	6.98	12.70	11.65
14.....	32.00	6.50	15.00	3.50	5.35	12.47	6.05
21.....	21.50	4.50	(¹)	4.50	3.58	8.52	4.55
28.....	21.00	4.50	² 20.00	5.50	4.65	11.13	4.55
Mar. 7.....	15.00	7.00	19.00	6.00	7.05	10.81	5.50
14.....	10.00	8.50	(¹)	8.50	5.55	8.14	11.15
21.....	7.00	11.00	30.00	5.00	6.55	11.91	11.65
28.....	5.50	5.50	25.00	3.50	6.08	9.12	6.15
Apr. 4.....	3.50	5.00	16.00	4.50	4.65	6.73	8.65
11.....	(¹)	7.00	11.00	6.00	5.65	7.41	8.65
18.....	(¹)	6.00	³ 5.50	4.50	4.55	5.14	4.65
25.....	(¹)	5.00	(¹)	10.00	5.55	6.85	4.00
May 2.....	(¹)	(¹)	(¹)	11.00	6.15	8.58	5.00

¹ Supplies were insufficient to quote prices.

² Wednesday price.

³ Monday price.

Note.--The date is for the current 1994/95 year. The data for the 1989/90 through 1993/94 seasons represent the closest corresponding Tuesdays to that date.

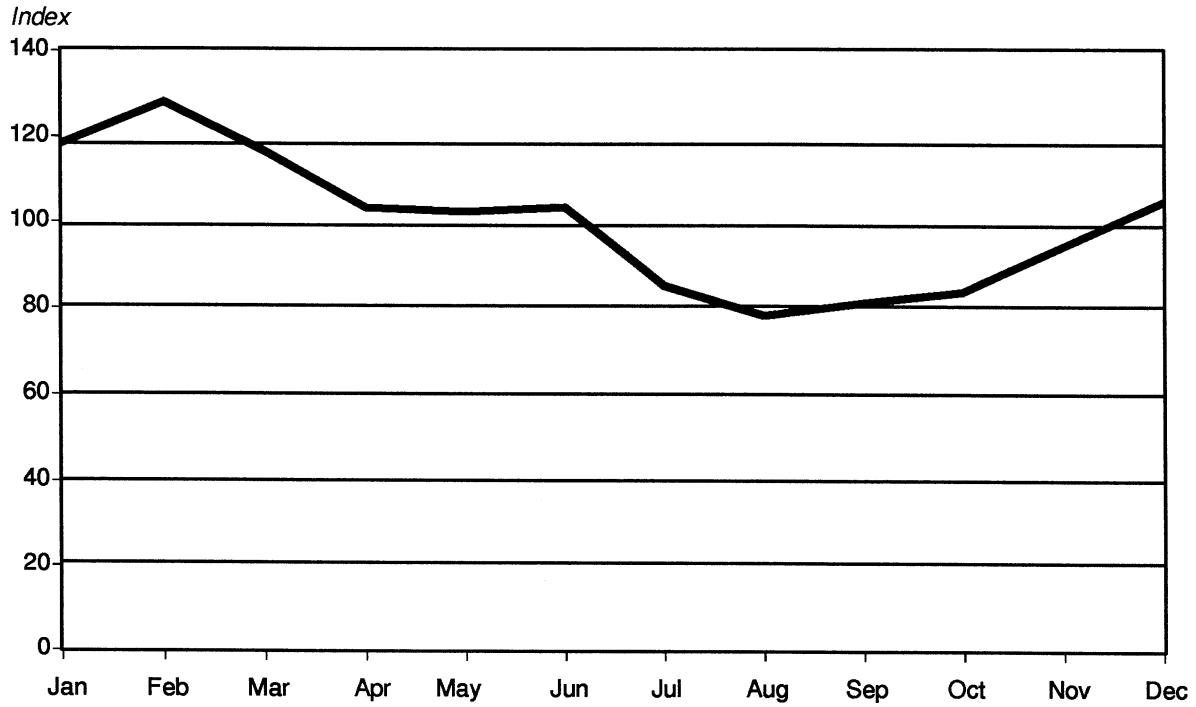
Source: Compiled from data of the Agricultural Marketing Service, U.S. Department of Agriculture.

Table 42
 Fresh-market tomatoes: Average retail prices, by overall U.S. average and four regions' averages, Jan.
 1990-Mar. 1995

(Dollars per pound)					
Year/Month	U.S.	Northeast	North Central	South	West
1990:					
Jan.	1.735	1.956	1.699	1.628	1.702
Feb.	2.361	2.670	2.462	2.170	2.279
Mar.	1.765	1.911	1.828	1.687	1.719
Apr.	.732	.807	.775	.622	.776
May	.697	.755	.717	.604	.744
June	.792	.917	.806	.736	.766
July	.777	.879	.854	.755	.697
Aug.	.765	.899	.841	.750	.664
Sept.	.773	.974	.795	.750	.670
Oct.	.846	1.006	.924	.825	.732
Nov.	.862	1.023	.915	.852	.749
Dec.	.858	.996	.899	.802	.807
1991:					
Jan.	.912	1.080	.925	.853	.865
Feb.	.840	1.007	.883	.795	.759
Mar.	.948	1.052	.980	.844	.926
Apr.	1.210	1.404	1.334	1.123	1.102
May	1.457	1.608	1.469	1.282	1.531
June	1.672	1.836	1.720	1.500	1.713
July	1.166	1.320	1.310	1.150	.994
Aug.	.795	.961	.821	.827	.640
Sept.	.759	.929	.782	.786	.609
Oct.	.714	.903	.766	.737	.539
Nov.	.813	.948	.850	.806	.701
Dec.	.793	.940	.782	.736	.745
1992:					
Jan.	.936	1.059	.917	.850	.934
Feb.	1.430	1.579	1.362	1.298	1.476
Mar.	1.729	1.877	1.732	1.572	1.767
Apr.	1.623	1.723	1.561	1.485	1.722
May	.828	.989	.708	.773	.823
June	.747	.924	.706	.679	.690
July	.802	1.009	.823	.759	.651
Aug.	.802	.967	.778	.804	.660
Sept.	.765	.972	.730	.750	.642
Oct.	1.001	1.180	.766	.979	.950
Nov.	1.242	1.403	1.296	1.227	1.096
Dec.	1.227	1.444	1.209	1.129	1.176
1993:					
Jan.	1.141	1.295	1.134	1.038	1.146
Feb.	1.098	1.374	1.087	1.037	.923
Mar.	.880	1.101	.864	.780	.802
Apr.	1.016	1.227	.994	.884	1.009
May	1.553	1.664	1.512	1.443	1.644
June	1.278	1.319	1.309	1.176	1.367
July	.824	1.017	.756	.782	.733
Aug.	.856	1.006	.808	.838	.765
Sept.	1.092	1.238	1.008	1.132	.593
Oct.	.944	1.116	.932	.967	.499
Nov.	1.010	1.142	.987	.953	.970
Dec.	1.313	1.446	1.192	1.185	1.466
1994:					
Jan.	1.604	1.758	1.606	1.533	1.539
Feb.	1.112	1.375	1.093	1.015	.984
Mar.	.914	1.180	.839	.854	.787
Apr.	.951	1.204	.923	.844	.866
May	.949	1.138	.889	.866	.921
June	1.047	1.229	1.000	.982	.995
July	.990	1.244	.972	.945	.814
Aug.	.969	1.168	.927	.984	.783
Sept.	.958	1.201	.888	.963	.770
Oct.	.979	1.209	.945	.931	.849
Nov.	1.129	1.263	1.081	1.122	1.050
Dec.	1.428	1.558	1.362	1.359	1.450
1995:					
Jan.	1.323	1.545	1.350	1.232	1.200
Feb.	1.300	1.572	1.200	1.254	1.175
Mar.	1.081	1.411	1.004	.982	.958

Source: Compiled from CPI Detailed Report, average retail food prices, U.S. city average and four regions, Bureau of Labor Statistics, U.S. Department of Labor, Washington, DC, various issues.

Figure 7
Fresh-market tomatoes: Seasonal index¹ of U.S. average retail prices, 1990-1994



¹ The seasonal index is calculated as the average price for the month divided by the average cost for the 1990 through 1994 period. For instance, the average January price is 18 percent higher than the average price for the overall period.

Source: Prepared by the staff of the U.S. International Trade Commission based on data reported by the U.S. Department of Commerce.

Table 43
 Fresh-market tomatoes: Average U.S. shipper prices, average U.S. retail prices, and average price spread,
 by months, Jan. 1990-Mar. 1995

Year/Month	(Dollars per pound)		
	Shipper prices	Retail prices	Price spread
1990:			
Jan.	1.160	1.735	.575
Feb.	.976	2.361	1.385
Mar.	.323	1.765	1.442
Apr.	.146	.732	.586
May	.223	.697	.474
June	.223	.792	.569
July	.268	.777	.509
Aug.	.260	.765	.505
Sept.	.248	.773	.525
Oct.	.315	.846	.531
Nov.	.309	.862	.553
Dec.	.297	.858	.561
1991:			
Jan.	.231	.912	.681
Feb.	.316	.840	.524
Mar.	.440	.948	.508
Apr.	.493	1.210	.717
May	.561	1.457	.896
June	.595	1.672	1.077
July	.305	1.166	.861
Aug.	.219	.795	.576
Sept.	.212	.759	.547
Oct.	.205	.714	.509
Nov.	.239	.813	.574
Dec.	.154	.793	.639
1992:			
Jan.	.405	.936	.531
Feb.	.760	1.430	.670
Mar.	.807	1.729	.922
Apr.	.324	1.623	1.299
May	.167	.828	.661
June	.219	.747	.528
July	.282	.802	.520
Aug.	.235	.802	.567
Sept.	.293	.765	.472
Oct.	.601	1.001	.400
Nov.	.391	1.242	.851
Dec.	.343	1.227	.884
1993:			
Jan.	.383	1.141	.758
Feb.	.219	1.098	.879
Mar.	.212	.880	.668
Apr.	.452	1.016	.564
May	.581	1.553	.972
June	.229	1.278	1.049
July	.233	.824	.591
Aug.	.327	.856	.529
Sept.	.298	1.092	.794
Oct.	.194	.944	.750
Nov.	.316	1.010	.694
Dec.	.576	1.313	.737
1994:			
Jan.	.415	1.604	1.189
Feb.	.193	1.112	.919
Mar.	.245	.914	.669
Apr.	.165	.951	.786
May	.207	.949	.742
June	.307	1.047	.740
July	.282	.990	.708
Aug.	.292	.969	.677
Sept.	.232	.958	.726
Oct.	.283	.979	.696
Nov.	.309	1.129	.820
Dec.	.372	1.428	1.056
1995:			
Jan.	.416	1.323	.907
Feb.	.270	1.300	1.030
Mar.	.248	1.081	.833

Source: Compiled from Vegetables and Specialties: Situation and Outlook Yearbook, Commodity Economics Division, Economics Research Division, U.S. Department of Agriculture, Washington, DC, TVS-260, July 1993, p. 29, and from official statistics of the U.S. Department of Labor.

Table 44

Fresh-market tomatoes: Average monthly wholesale prices, F.O.B. Mexico City, pesos per kilogram and U.S. dollars per 25-pound box equivalent, Jan. 1990-May 1995

Month	1990	1991	1992	1993	1994	1995
<u>Unit price (pesos per kilogram)</u>						
Jan. . .	2.41	1.67	2.40	2.51	2.99	3.06
Feb. . .	4.21	1.13	4.20	1.90	1.70	2.31
Mar. . .	2.86	1.67	6.33	1.43	2.05	3.00
Apr. . .	1.21	1.27	4.88	1.94	1.90	2.63
May . . .	1.08	5.88	1.77	6.44	2.38	2.56
June . .	1.62	7.50	2.14	4.72	2.60	(¹)
July . .	1.40	5.50	2.30	1.97	2.97	(¹)
Aug. . .	1.38	1.72	2.07	2.91	3.03	(¹)
Sept. . .	1.89	1.46	2.38	3.41	3.50	(¹)
Oct. . .	1.27	1.27	4.87	2.30	3.94	(¹)
Nov. . .	1.55	1.41	5.11	2.83	4.47	(¹)
Dec. . .	1.50	1.24	6.10	2.80	4.79	(¹)
<u>Unit price (U.S. dollars per 25-pound box equivalent)</u>						
Jan. . .	10.27	6.43	8.86	9.15	10.90	6.30
Feb. . .	17.76	4.34	15.56	6.95	6.20	4.60
Mar. . .	11.91	6.34	23.38	5.21	7.09	5.08
Apr. . .	4.99	4.80	18.03	7.10	6.43	4.73
May . . .	4.42	22.21	6.48	23.41	8.15	(¹)
June . .	6.52	28.26	7.78	17.16	8.77	(¹)
July . .	5.63	18.90	8.36	7.16	9.91	(¹)
Aug. . .	5.46	6.40	7.58	10.61	10.17	(¹)
Sept. . .	7.42	5.41	8.73	12.43	11.67	(¹)
Oct. . .	4.93	4.69	17.70	8.39	13.06	(¹)
Nov. . .	6.01	5.21	18.57	10.16	14.74	(¹)
Dec. . .	5.79	4.60	22.17	10.21	13.82	(¹)

¹ Data not available.

Source: Servicio Nacional de Informacion de Mercados, as reported by the U.S. Department of Agriculture, "Tomatoes and Products, Annual Report," American Embassy, Mexico City, Mexico, AGR Numbers MX1236 (1991), MX2253 (1992), MX3132 (1993) and MX4085 (1994). Exchange rate based on monthly averages as reported by the International Monetary Fund.

